



PARTS CATALOGUE

AL125FX (2SV1) INDONESIA

AL125FX
PARTS CATALOGUE
©2013 by Yamaha Motor Co., Ltd.
1st edition, December 2013
All rights reserved.
Any reprinting or unauthorized use
without the written permission of
Yamaha Motor Co., Ltd.
is expressly prohibited.
Printed in Japan.

FOREWORD

This Parts Catalogue is related to the parts for the model(s) on the cover page. When you are ordering replacement parts, please refer to this Parts Catalogue and quote both part numbers and part names correctly.

1. Modifications or additions which have been made after the issue of the Parts Catalogue will be announced in the Parts News.

It is advisable that you make the necessary corrections to the Parts Catalogue according to the Parts News.

2. Abbreviations

The following abbreviations are used in this Parts Catalogue.

“UR” Use specified parts number.

“UN” Use as many as needed.

“AP” Alternate Parts

“LM” Locally Made (Parts need to be ordered locally)

“F#” Frame No. (Applicable machine No.)

“O/S” Over Size

3. The number of components for assembly

- Parts, which are to be supplied in an assembly, are listed with a dot (.) in front of the part name as shown below.
- The numeral appearing to the right of each component part indicates the quantity of parts for each assembly unit.

PART NO.	DESCRIPTION	Q'TY	REMARKS
2F5-83310-60	FRONT FLASHER LIGHT ASSY	2	
115-83311-60	.BULB (6V-18W)	1	

4. Applicable colours of graphics are represented in the “REMARKS” as shown below.

PART NO.	DESCRIPTION	Q'TY	REMARKS
2N4-24110-00-X5	FUEL TANK COMP.	2	MXR
3J1-24240-10	.GRAPHIC, FUEL TANK	1	FOR MXR

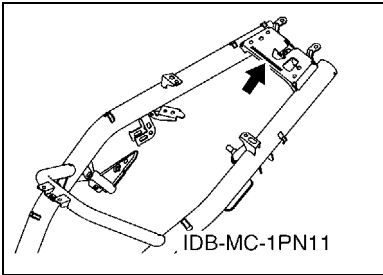
5. Note that the illustrations for reference in finding parts numbers are not to be used for assembling. When assembling, please use the applicable service manual.

6. The asterisk (*) before a reference number indicates modified items after the first edition.

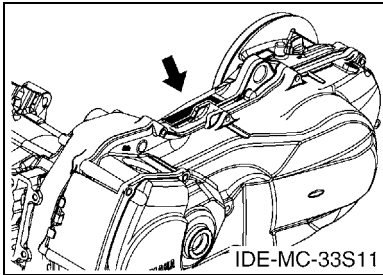
FOREWORD

7. Applicable Serial No.

Frame Serial No.



Engine Serial No.



8. Applicable Colour Code (The (*) mark shows Model colour.)

Abbreviation	Colour Name	Colour Code
BS4	BLUISH SILVER 4	0820
DBNM8	DARK BLUISH GRAY METALLIC 8	0919
DPRME(*)	DARK PURPLISH RED METALLIC E	1336
SMX(*)	BLACK METALLIC X	0903
WM6(*)	WHITE METALLIC 6	1124

9. Applicable Starting Serial No.

Frame Serial No.

Serial No.	Name Of Q'ty Column	Model Code

Engine Serial No.

Serial No.	Name Of Q'ty Column	Model Code

CONTENTS

ENGINE

CYLINDER	1
CRANKSHAFT & PISTON	3
VALVE	4
CAMSHAFT & CHAIN	5
WATER PUMP	6
RADIATOR & HOSE	7
OIL PUMP	9
INTAKE	10
EXHAUST	12
CRANKCASE	13
CRANKCASE COVER 1	15
STARTER	16
CLUTCH	17
TRANSMISSION	19

CHASSIS

FRAME	20
FENDER	21
SIDE COVER	22
REAR ARM & SUSPENSION	25
STEERING	26
FUEL TANK	28
SEAT	29
FRONT WHEEL	30
FRONT BRAKE CALIPER	31
REAR WHEEL	32
STEERING HANDLE & CABLE	33
FRONT MASTER CYLINDER	35
STAND & FOOTREST	36
LEG SHIELD	37
GENERATOR	40
STARTING MOTOR	41
METER	42
HEADLIGHT	43
TAILLIGHT	44
HANDLE SWITCH & LEVER	45
ELECTRICAL 1	46
ELECTRICAL 2	47

INDEX

NUMERICAL INDEX	48
-----------------------	----

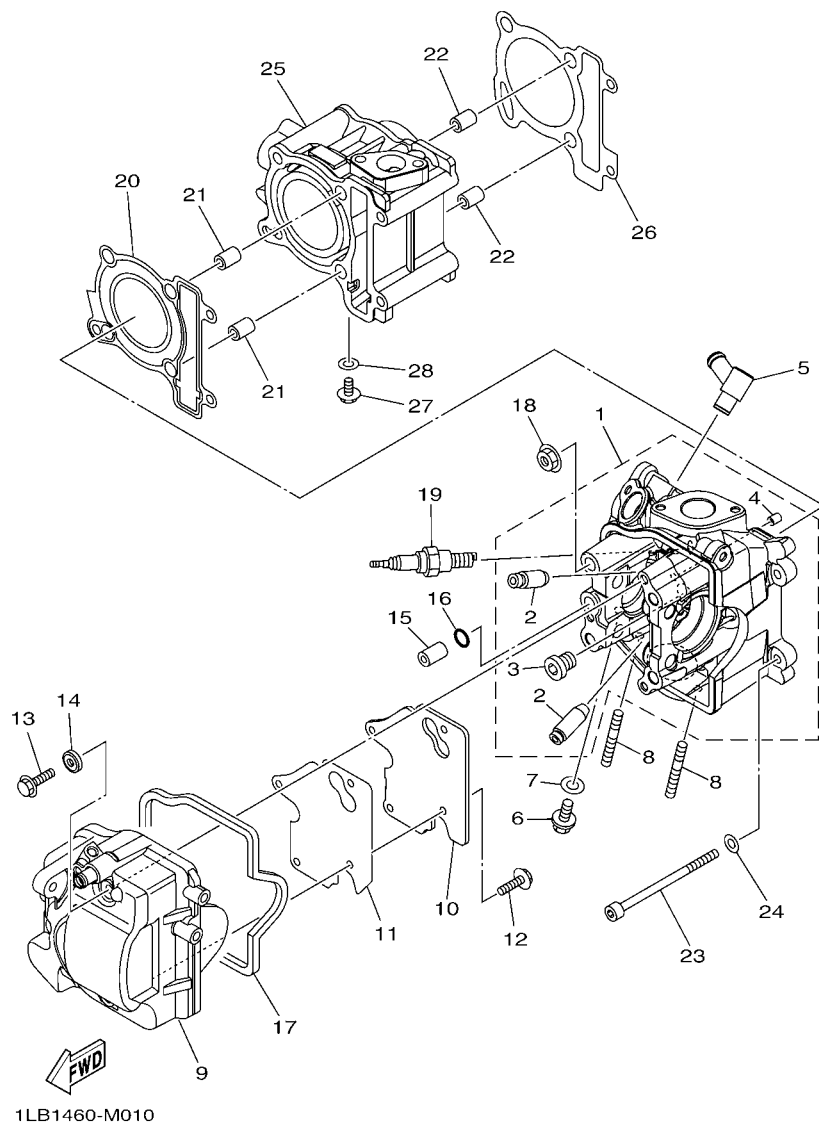
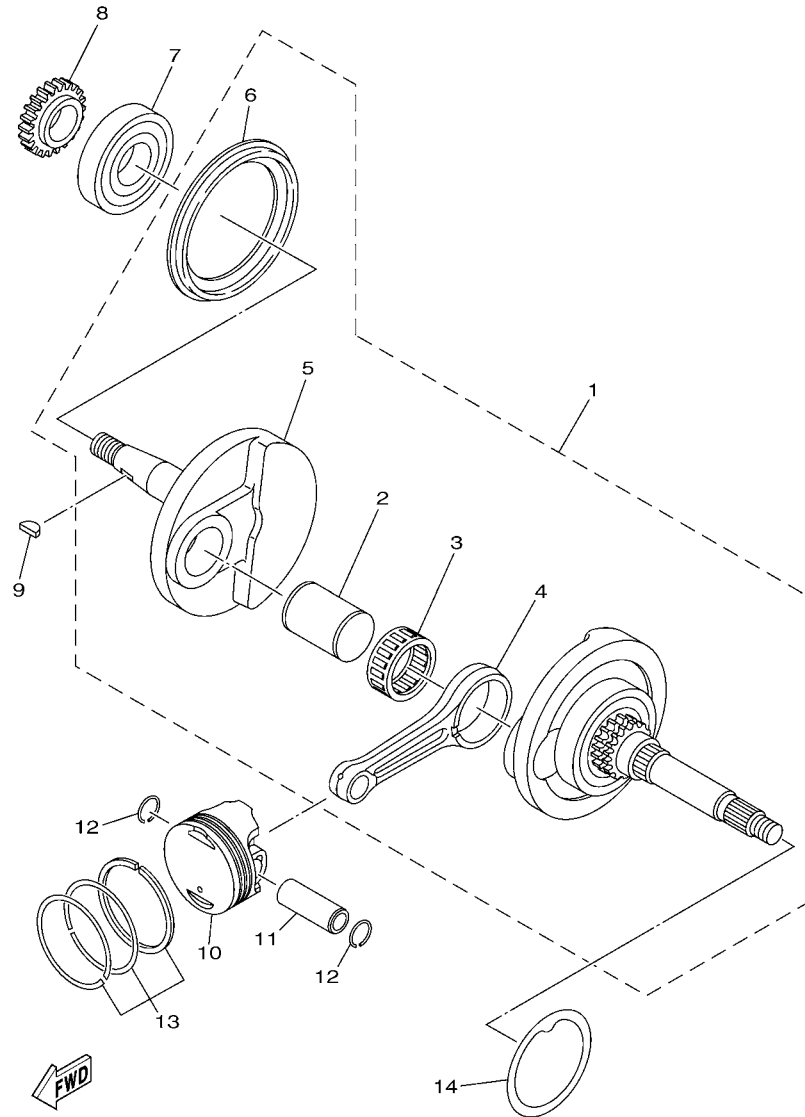


FIG. 1 CYLINDER

REF. NO.	PART NO.	DESCRIPTION	2SV1				REMARKS
1	1LB-E1102-00	CYLINDER HEAD ASSY	1				
2	33S-E1133-10	.GUIDE, VALVE 1	2				
3	90340-12813	.PLUG, STRAIGHT SCREW	1				
4	40D-E5138-00	.NOZZLE 1	1				
5	1LB-E111J-00	PIPE 1	1				
6	95022-06010	BOLT, FLANGE	1				
7	90430-06014	GASKET	1				
8	95612-08618	BOLT, STUD	2				
9	1LB-E1191-00	COVER, CYLINDER HEAD 1	1				
10	1LB-E1165-00	PLATE, BREATHER	1				
11	1LB-E1169-00	GASKET, BREATHER COVER	1				
12	95022-06014	BOLT, FLANGE	4				
13	95812-06035	BOLT, FLANGE	3				
14	1LB-E1173-00	WASHER, SEALING	3				
15	91809-14804	PIN, DOWEL	1				
16	93210-09806	O-RING	1				
17	1LB-E1193-00	GASKET, HEAD COVER 1	1				
18	90179-08518	NUT	4				
19	94700-00891	PLUG, SPARK(NGK CR7E)	1				
20	1PN-E1181-00	GASKET, CYLINDER HEAD 1	1				
21	91810-14809	PIN, DOWEL	2				
22	91810-14809	PIN, DOWEL	2				
23	91312-06095	BOLT	2				
24	90201-06034	WASHER, PLATE	2				
25	1LB-E1311-00	CYLINDER 1	1				
26	44D-E1351-00	GASKET, CYLINDER	1				
27	95022-06010	BOLT, FLANGE	1				



1LB1460-M020

FIG. 2 CRANKSHAFT & PISTON

REF. NO.	PART NO.	DESCRIPTION	2SV1				REMARKS
1	1LB-E1400-00	CRANKSHAFT ASSY	1				
2	33S-E1681-00	.PIN, CRANK 1	1				
3	93310-628X8	.BEARING	1				
4	33S-E1651-00	.ROD, CONNECTING	1				
5	1LB-E1422-00	.CRANK 2	1				
6	5LW-E3452-00	.COVER, ROTOR FILTER	1				
7	93306-372X0	BEARING	1				UR
	93306-372Y4	BEARING	1				UR
8	44D-E3324-00	GEAR, PUMP DRIVE	1				
9	90280-03017	KEY, WOODRUFF	1				
10	33S-E1631-03	PISTON (STD)	1				
11	1S7-E1633-00	PIN, PISTON	1				
12	93450-16115	CIRCLIP	2				
13	1PN-E1603-00	PISTON RING SET (STD)	1				
14	54P-E1445-00	SPACER	1				

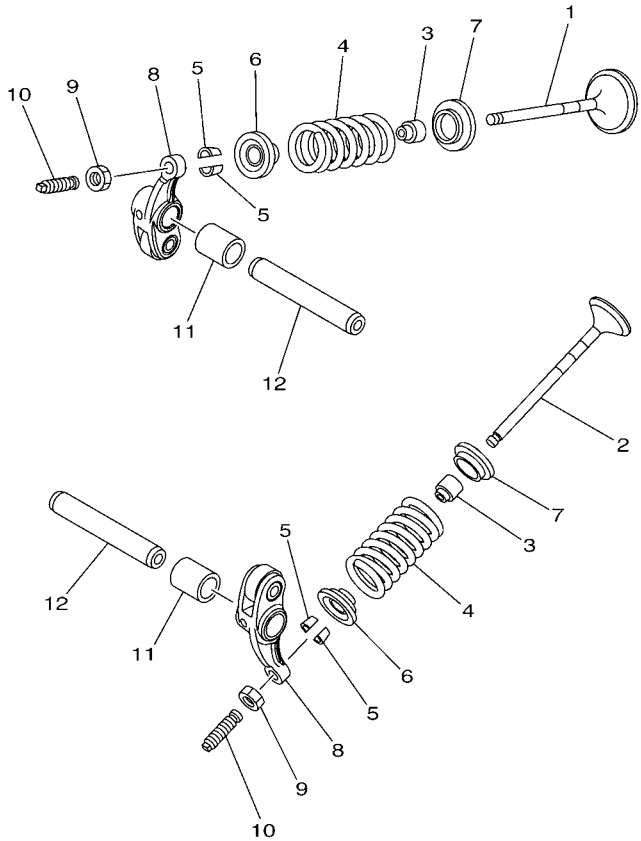
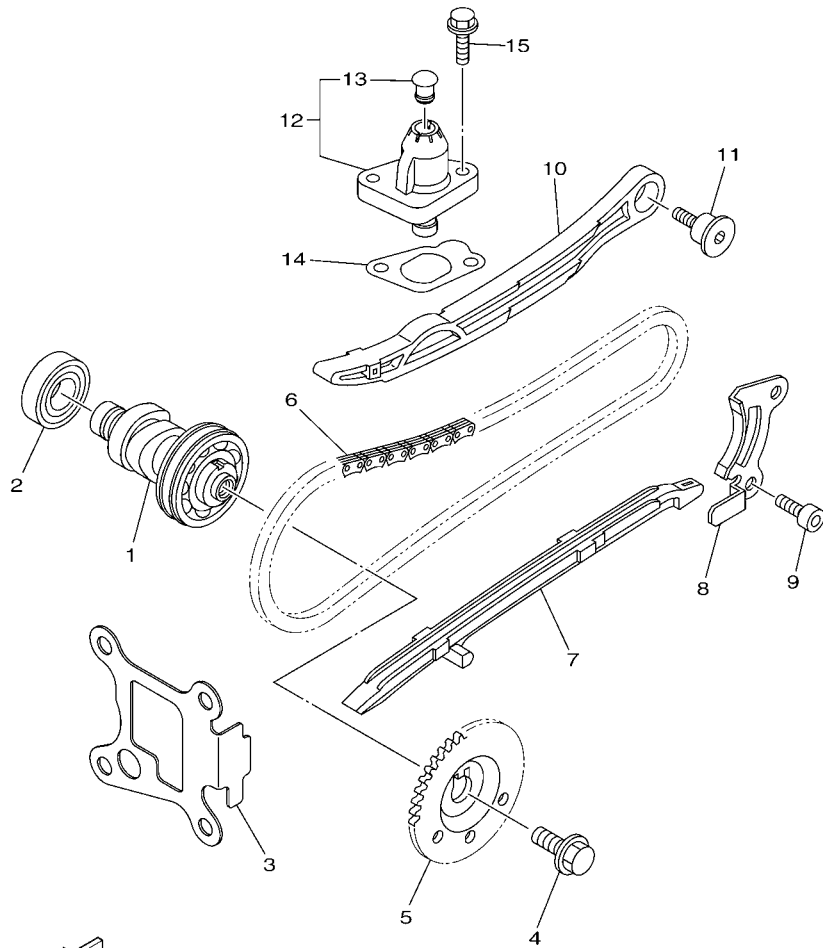


FIG. 3 VALVE

REF. NO.	PART NO.	DESCRIPTION	2SV1				REMARKS
1	54P-E2111-00	VALVE, INTAKE	1				
2	1LB-E2121-00	VALVE, EXHAUST	1				
3	54P-E2119-00	SEAL, VALVE STEM	2				
4	54P-E2113-00	SPRING, VALVE INNER	2				
5	5TL-E2118-00	LOCK, VALVE SPRING RETAINER	4				
6	54P-E2117-00	RETAINER, VALVE SPRING	2				
7	1DY-E2126-00	SEAT, VALVE SPRING 2	2				
8	54P-E2151-00	ARM, VALVE ROCKER	2				UR
	54P-E2151-10	ARM, VALVE ROCKER	2				UR
9	90170-05803	NUT	2				
10	33S-E2159-00	SCREW, VALVE ADJUSTING	2				
11	44D-E2662-00	COLLAR 1	2				
12	54P-E2146-00	SHAFT, ROCKER	2				



54S1431-L030

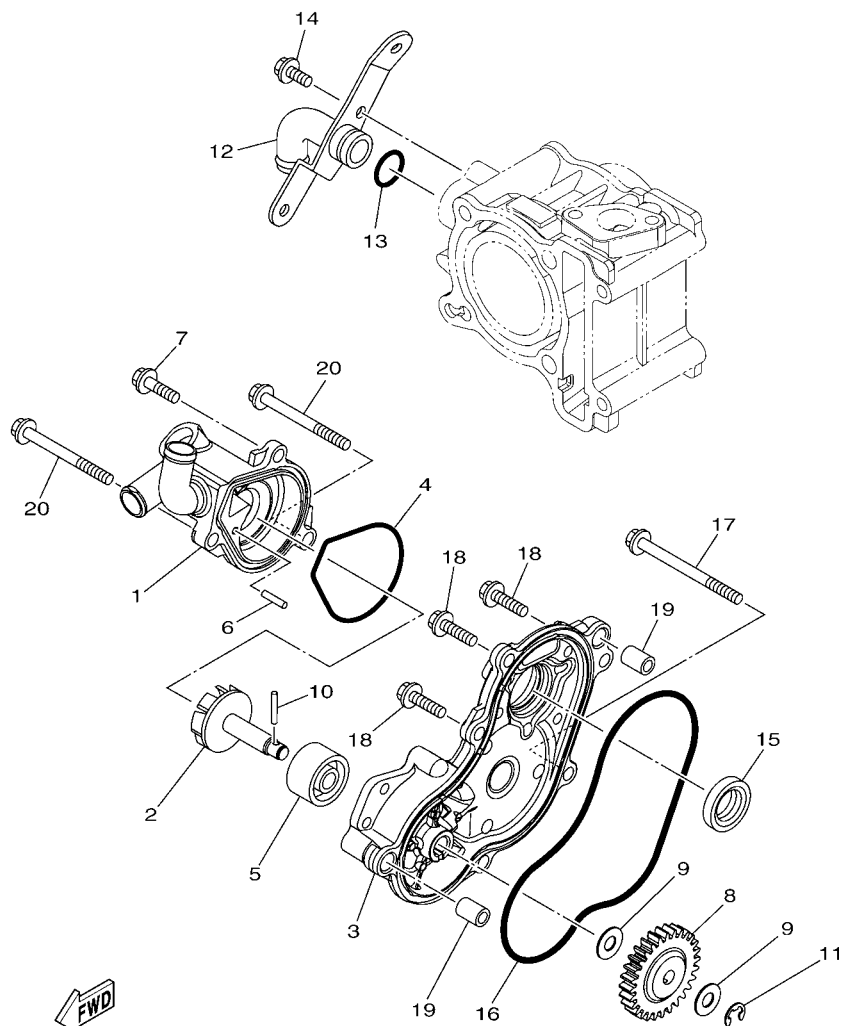


1LB1460-M040

FIG. 4 CAMSHAFT & CHAIN

REF. NO.	PART NO.	DESCRIPTION	2SV1				REMARKS
1	1LB-E2170-00	CAMSHAFT ASSY 1	1				
2	93306-002YE	BEARING	1				
3	54P-E111F-00	PLATE	1				
4	90105-088E1	BOLT, FLANGE	1				
5	1LB-E2176-00	SPROCKET, CAM CHAIN	1				
6	94568-F9090	CHAIN	1				
7	1LB-E2231-00	GUIDE, STOPPER 1	1				
8	44D-E2233-00	PLATE, GUIDE STOPPER 1	1				
9	91312-06012	BOLT	2				
10	33S-E2241-00	GUIDE, STOPPER 2	1				
11	1LB-E2228-00	BOLT	1				
12	44D-E2210-00	TENSIONER ASSY, CAM CHAIN	1				
13	5MX-E2222-00	.PLUG	1				
14	1DY-E2213-00	GASKET, TENSIONER CASE	1				
15	95022-06020	BOLT, FLANGE	2				

FIG. 5 WATER PUMP



1PN1431-M050

REF. NO.	PART NO.	DESCRIPTION	2SV1				REMARKS
1	44D-E2422-00	COVER, HOUSING	1				
2	44D-E2450-00	IMPELLER SHAFT ASSY	1				
3	44D-E5417-01	COVER, CAP	1				
4	44D-E2439-00	O-RING	1				
5	44D-E2223-00	SEAL	1				
6	93603-10800	PIN, DOWEL	1				
7	90105-06894	BOLT, FLANGE	1				
8	44D-E2459-00	GEAR, IMPELLER SHAFT	1				
9	44D-E2456-00	WASHER	2				
10	93603-17800	PIN, DOWEL	1				
11	99002-07600	CLIP	1				
12	1LB-E2446-00	JOINT	1				
13	93210-16803	O-RING	1				
14	95022-06014	BOLT, FLANGE	1				
15	93102-19800	OIL SEAL	1				
16	93211-31800	O-RING	1				
17	95022-06070	BOLT, FLANGE	1				
18	95022-06020	BOLT, FLANGE	3				
19	91810-14809	PIN, DOWEL	2				
20	95022-06060	BOLT, FLANGE	2				

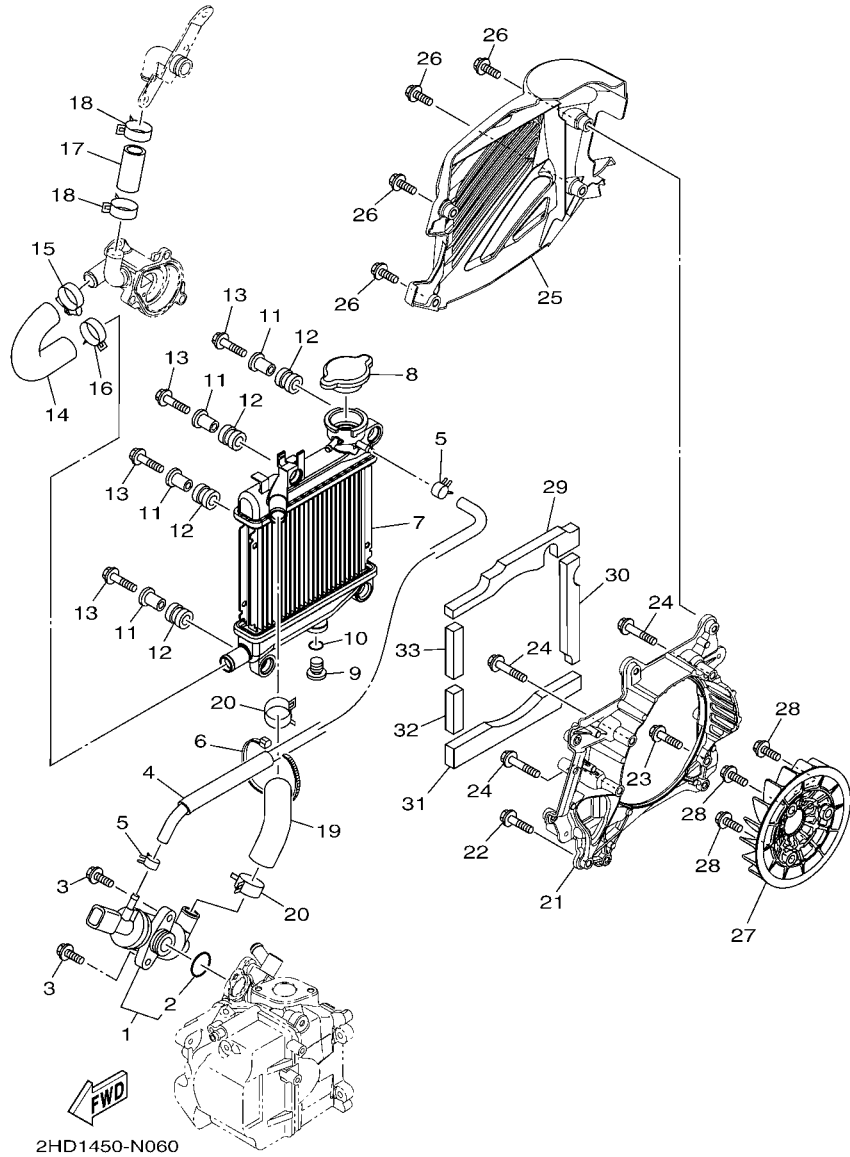
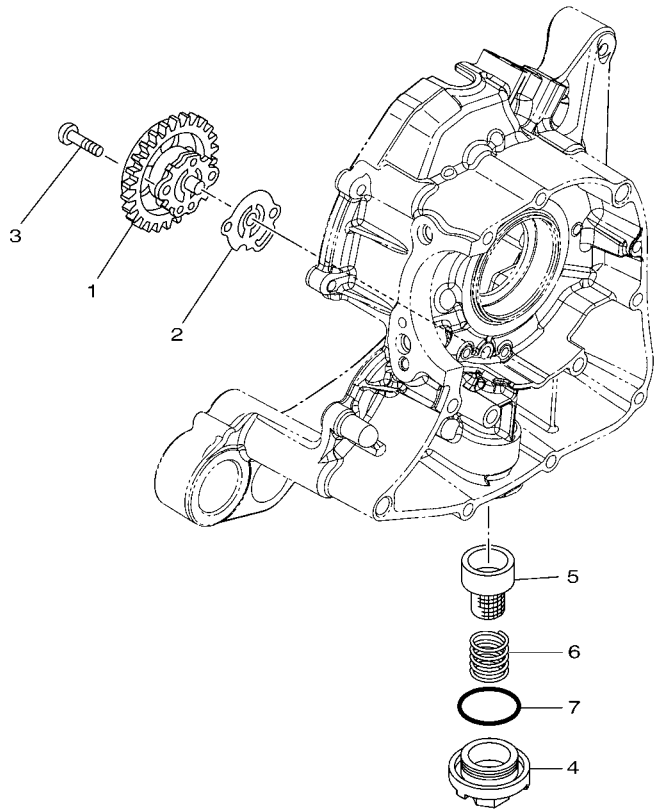


FIG. 6 RADIATOR & HOSE

REF. NO.	PART NO.	DESCRIPTION	2SV1				REMARKS
1	52S-12410-00	THERMOSTAT ASSY	1				
2	52S-12439-00	.O-RING	1				
3	95022-06020	BOLT, FLANGE	2				
4	1LB-E2463-00	PIPE, BREATHER	1				
5	90467-090A3	CLIP	2				
6	90464-13073	CLAMP	1				
7	1PN-E2460-00	RADIATOR ASSY	1				
8	33S-E2590-00	CONDUCTION ASSY	1				
9	33S-E2615-00	BOLT	1				
10	33S-E2843-00	O-RING	1				
11	90387-08823	COLLAR	4				
12	90480-15803	GROMMET	4				
13	95827-06030	BOLT, FLANGE	4				
14	44D-E2481-01	PIPE 1	1				
15	90450-27803	HOSE CLAMP ASSY	1				
16	90467-22801	CLIP	1				
17	44D-E2482-01	PIPE 2	1				
18	90467-22801	CLIP	2				
19	1LB-E2483-00	PIPE 3	1				
20	90467-22801	CLIP	2				
21	1LB-E2621-00	CASE, FAN	1				
22	95812-06025	BOLT, FLANGE	1				
23	95022-06025	BOLT, FLANGE	1				
24	95022-06035	BOLT, FLANGE	3				
25	1LB-E2467-00	COVER, RADIATOR	1				
26	95027-06020	BOLT, FLANGE	4				
27	44D-E2611-00	FAN	1				

FIG. 7 OIL PUMP



REF. NO.	PART NO.	DESCRIPTION	2SV1					REMARKS
1	44D-E3300-00	OIL PUMP ASSY	1					
2	5LW-E3475-00	GASKET	1					
3	98507-05020	SCREW, PAN HEAD	2					
4	54P-E5351-00	PLUG, DRAIN	1					
5	5LW-E3411-00	STRAINER, OIL	1					
6	90501-16004	SPRING, COMPRESSION	1					
7	93210-29800	O-RING	1					


1LB1460-M070

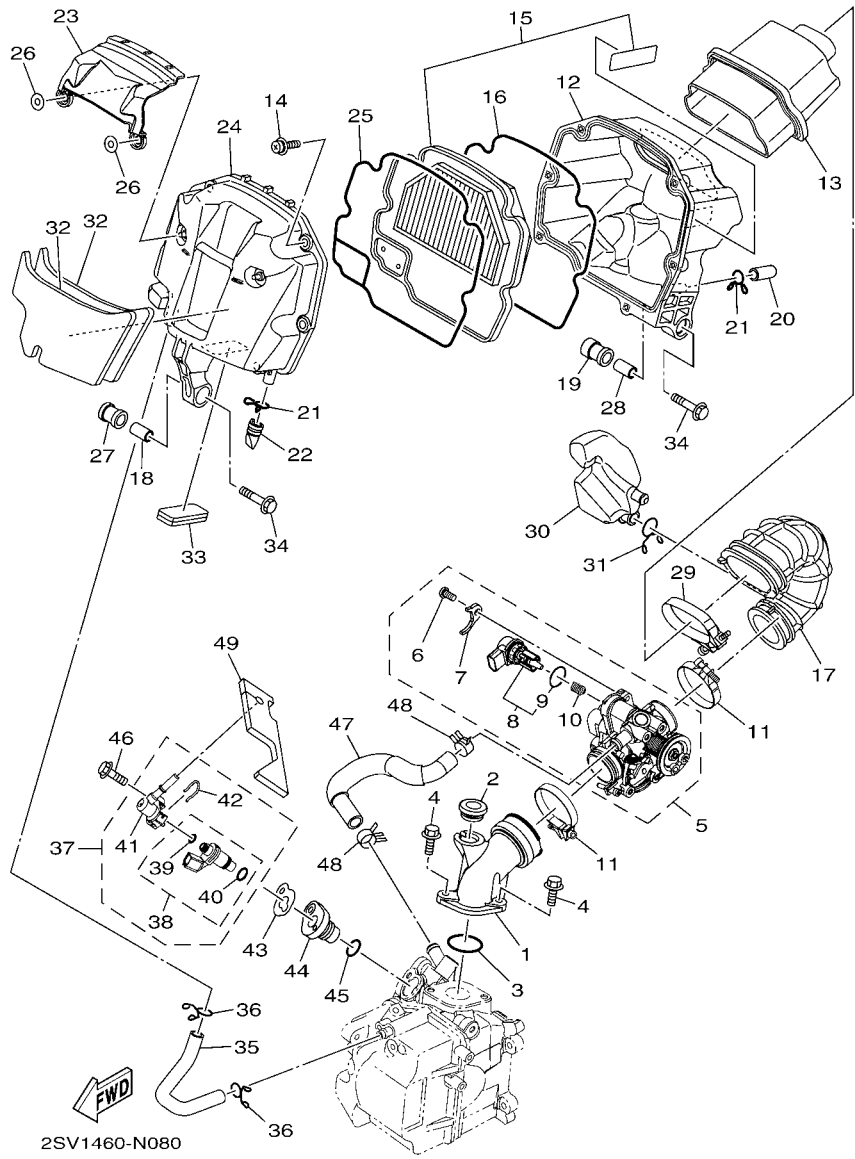


FIG. 8 INTAKE

REF. NO.	PART NO.	DESCRIPTION	2SV1				REMARKS
1	1PN-E3585-00	MANIFOLD	1				
2	1LB-E5357-00	GROMMET	1				
3	93210-30611	O-RING	1				
4	95022-06020	BOLT, FLANGE	2				
5	1LB-E3750-00	THROTTLE BODY ASSY	1				
6	98502-06012	.SCREW, PAN HEAD	1				
7	54P-E4243-00	.PLATE	1				
8	54P-H5801-00	.STEPPING MOTOR	1				
9	54P-E416A-00	..O-RING	1				
10	54P-E4335-00	.SPRING, PLUNGER	1				
11	90450-46803	HOSE CLAMP ASSY	2				
12	1LB-E4411-00	CASE, AIR CLEANER 1	1				
13	1LB-E4422-00	CAP, CLEANER CASE 2	1				
14	97602-05320	SCREW, PAN HEAD WITH WASHER	6				
15	1LB-WE445-00	AIR CLEANER ELEMENT ASSY	1				
16	1LB-E4452-00	SEAL	1				
17	1LB-E4453-00	JOINT, AIR CLEANER 1	1				
18	44D-E4449-00	COLLAR	1				
19	1LB-E4435-00	GROMMET	1				
20	5TL-E443E-00	PIPE, DRAIN	1				
21	90467-12808	CLIP	2				
22	5TP-E443G-00	PIPE, DRAIN 2	1				
23	1LB-E4417-00	COVER 1	1				
24	1LB-E4412-00	CAP, CLEANER CASE 1	1				
25	1LB-E4457-00	SEAL	1				
26	92902-05200	WASHER	2				
27	1LB-E4445-00	GROMMET	1				

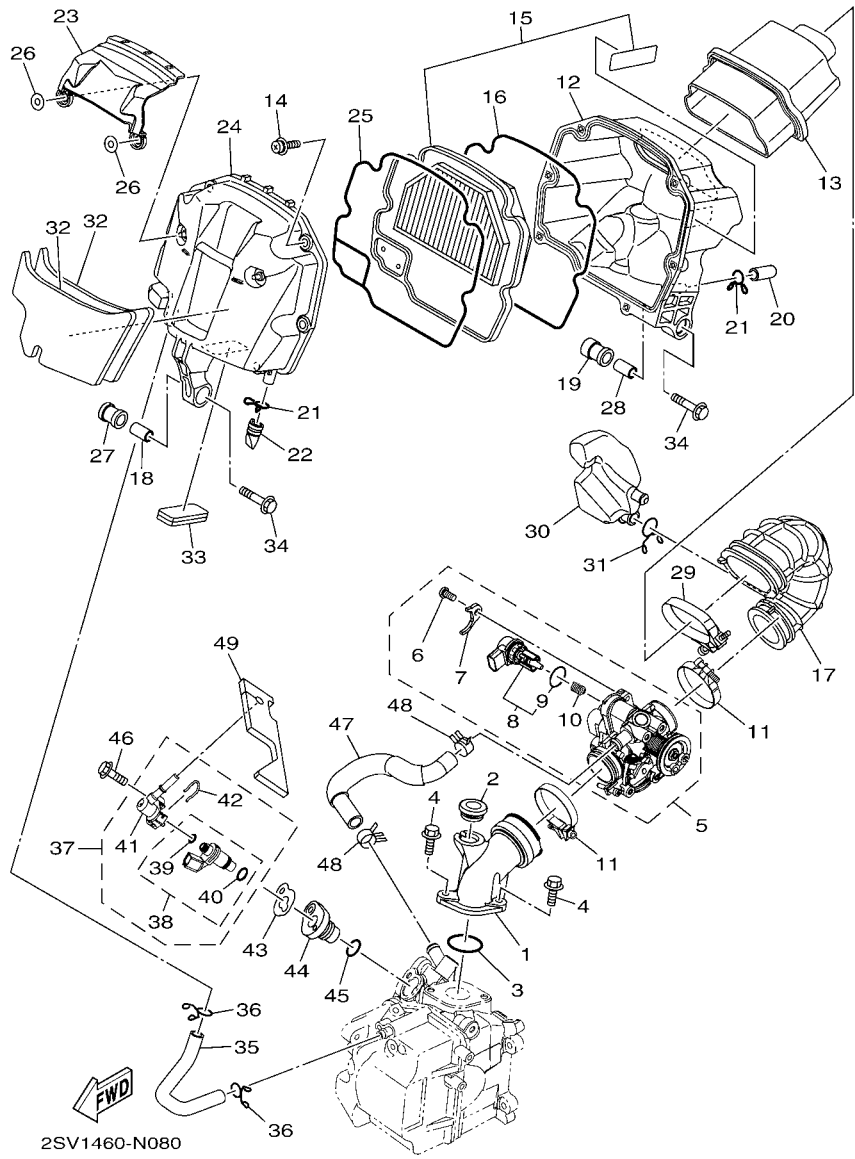
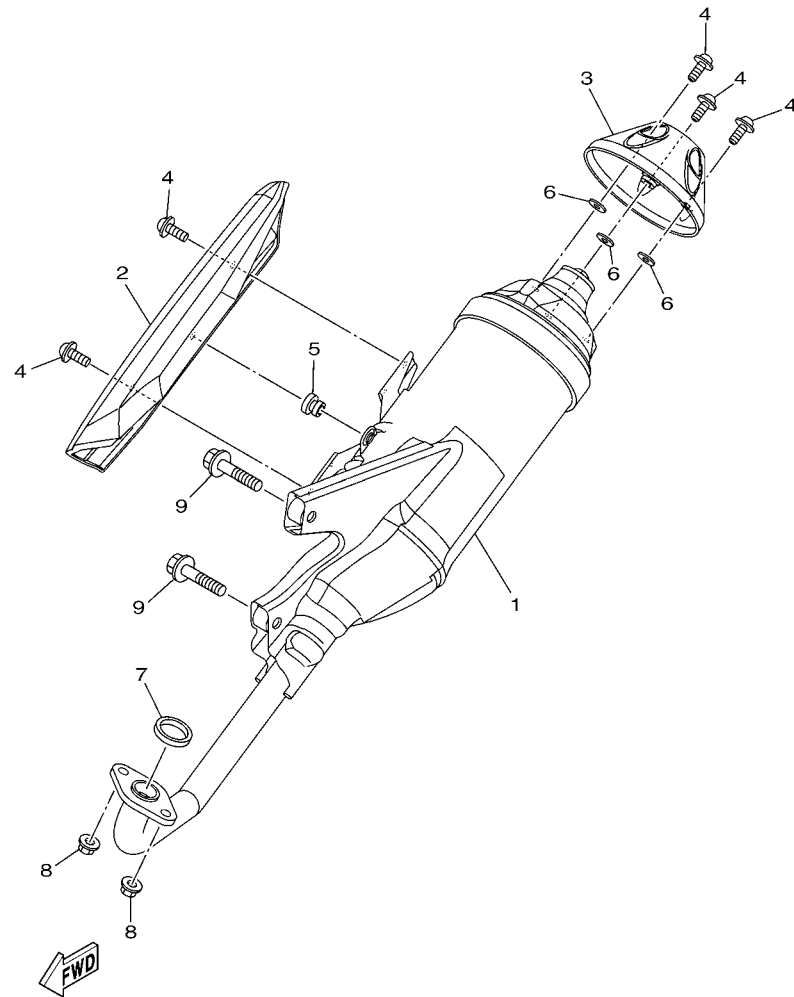


FIG. 8 INTAKE

REF. NO.	PART NO.	DESCRIPTION	2SV1				REMARKS
28	1LB-E4449-00	COLLAR	1				
29	44D-E4455-00	BAND	1				
30	1LB-E4877-00	RESONATOR	1				
31	90467-18806	CLIP	1				
32	1LB-E4409-00	DAMPER	2				
33	1LB-E4425-00	DAMPER 1	1				
34	95812-06035	BOLT, FLANGE	2				
35	1LB-E1166-00	PIPE, BREATHER 1	1				
36	90467-11825	CLIP	2				
37	1DB-E3770-00	INJECTOR ASSY	1				
38	54P-E3761-00	.INJECTOR	1				
39	54P-E4147-00	..O-RING	1				
40	5CA-E4147-00	..O-RING	1				
41	1DB-E3938-00	.PIPE	1				
42	54P-E4137-00	.CLIP	1				
43	1LB-E3557-00	GASKET	1				
44	1PN-E2572-00	ADAPTER	1				
45	93210-17802	O-RING	1				
46	95812-06030	BOLT, FLANGE	1				
47	1LB-E3895-00	HOSE, AIR	1				
48	90467-15802	CLIP	2				
49	1LB-E4426-00	DAMPER 2	1				



1PN1431-M090

FIG. 9 EXHAUST

REF. NO.	PART NO.	DESCRIPTION	2SV1				REMARKS
1	1LB-E4711-00	MUFFLER 1	1				
2	1LB-E4718-10	PROTECTOR, MUFFLER 1	1				
3	1LB-E4799-00	CAP	1				
4	90111-06807	BOLT,HEX. SOCKET BUTTON	5				
5	90480-10332	GROMMET	1				
6	90201-05817	WASHER, PLATE	3				
7	14D-E4613-00	GASKET, EXHAUST PIPE	1				
8	95702-08500	NUT, FLANGE	2				
9	95812-08045	BOLT, FLANGE	2				

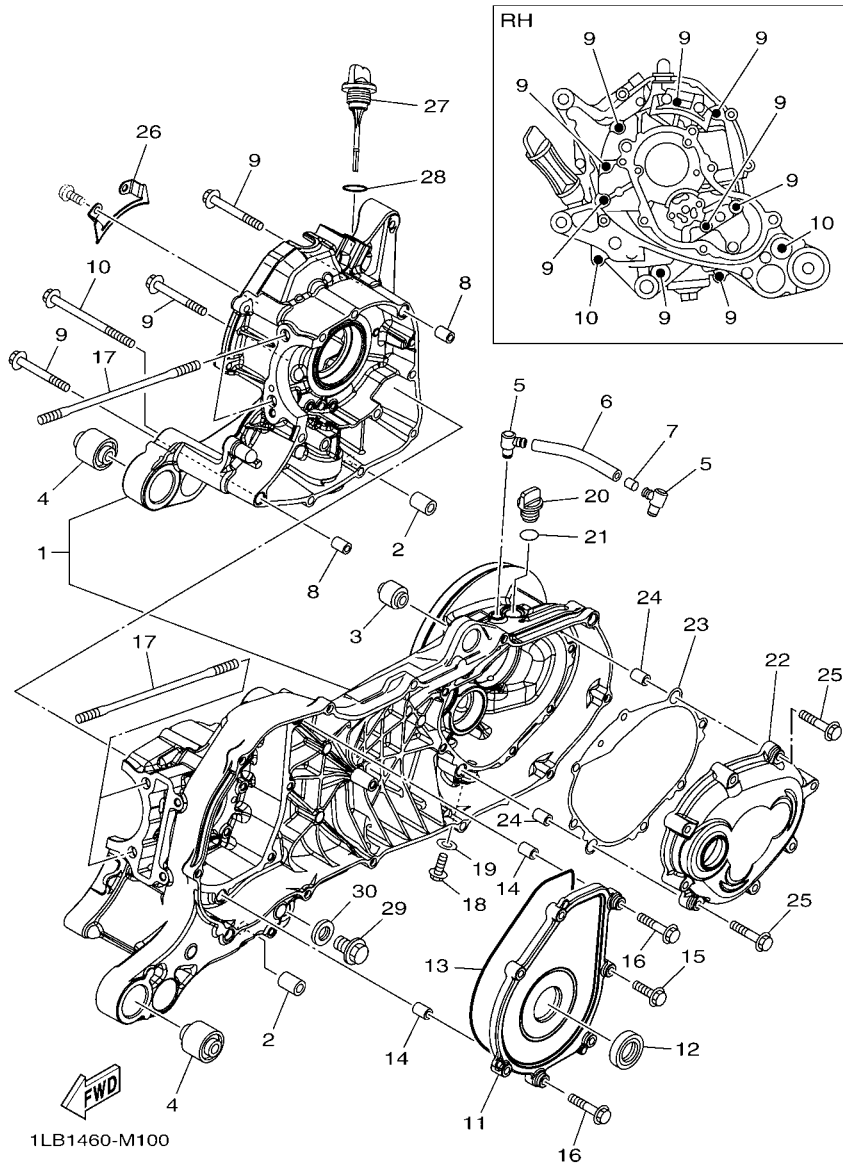


FIG. 10 CRANKCASE

REF. NO.	PART NO.	DESCRIPTION	2SV1				REMARKS
1	1LB-E5150-00	CRANKCASE ASSY	1				
2	54P-F7121-00	BUSH	2				
3	5MX-F2216-00	BUSH, REAR SHOCK ABSORBER	1				
4	90388-10808	DAMPER	2				
5	5LW-E5371-01	BREATHER	2				
6	44D-E5373-00	PIPE, BREATHER	1				
7	14D-E5408-00	ELEMENT 2	1				
8	91810-14809	PIN, DOWEL	2				
9	95022-06060	BOLT, FLANGE	9				
10	95022-06100	BOLT, FLANGE	2				
11	44D-E5423-00	COVER 2	1				
12	93102-25815	OIL SEAL	1				
13	93211-44801	O-RING	1				
14	91810-14809	PIN, DOWEL	2				
15	95022-06025	BOLT, FLANGE	5				
16	95022-06035	BOLT, FLANGE	2				
17	90116-08843	BOLT, STUD	4				
18	95812-08016	BOLT, FLANGE	1				
19	90430-08119	GASKET	1				
20	5LW-E5363-00	PLUG, OIL	1				
21	93210-14816	O-RING	1				
22	44D-E5421-00	COVER, CRANKCASE 2	1				
23	44D-E5461-00	GASKET, CRANKCASE COVER 2	1				
24	91810-14809	PIN, DOWEL	2				
25	95022-06035	BOLT, FLANGE	8				
26	54P-E5113-00	PLATE	1				
27	1LB-E5362-00	PLUG, OIL LEVEL	1				

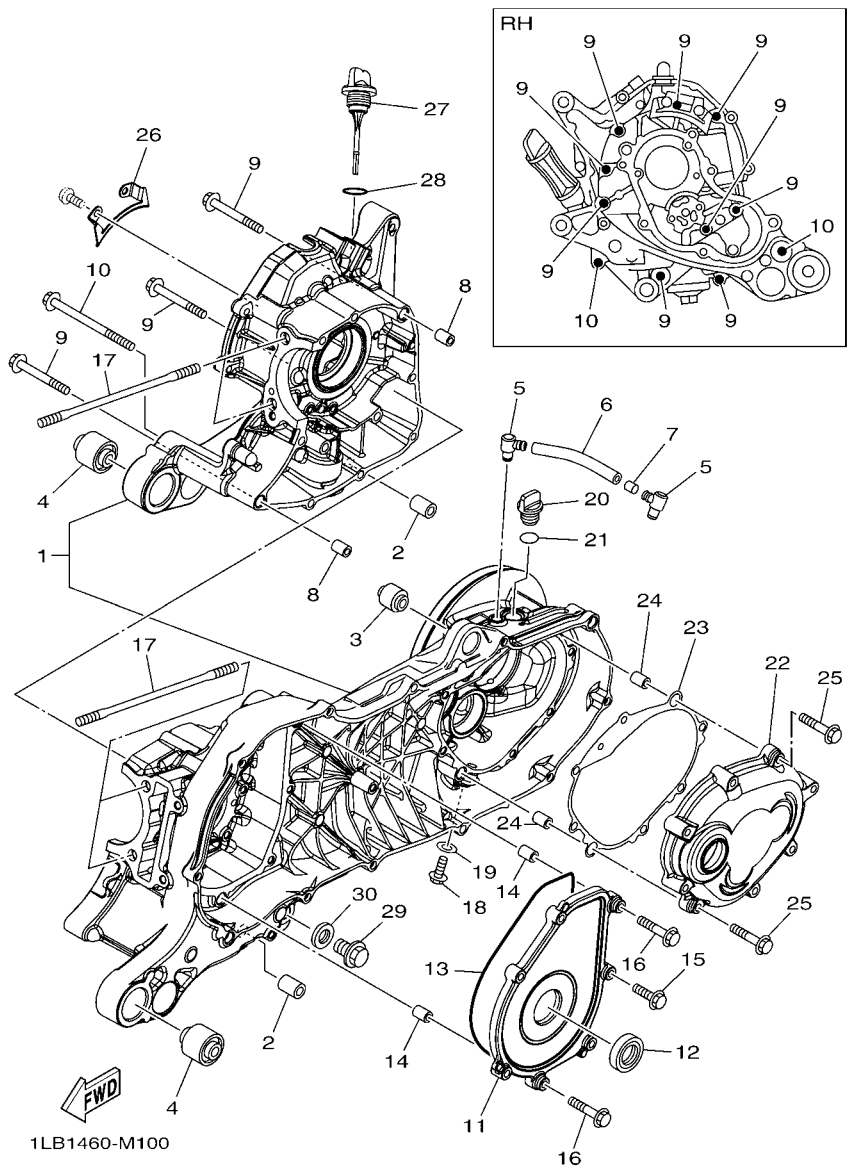
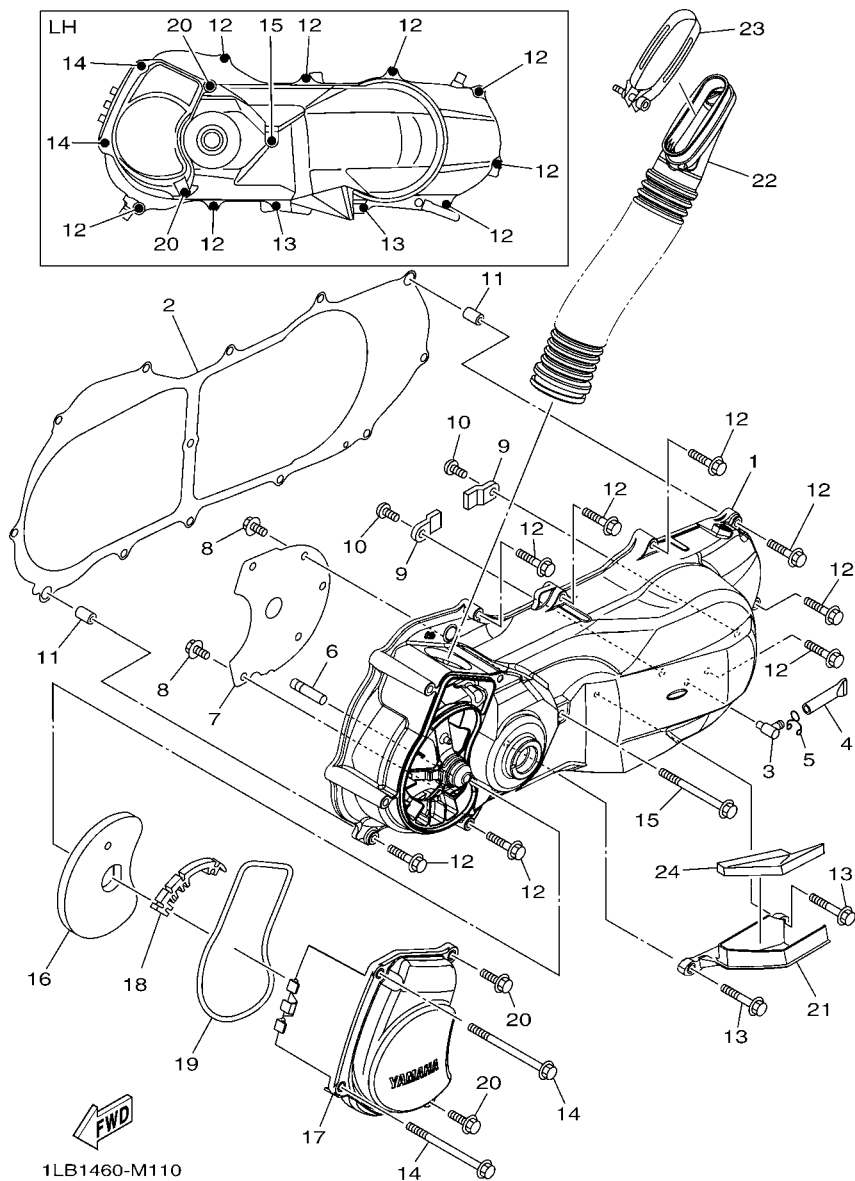


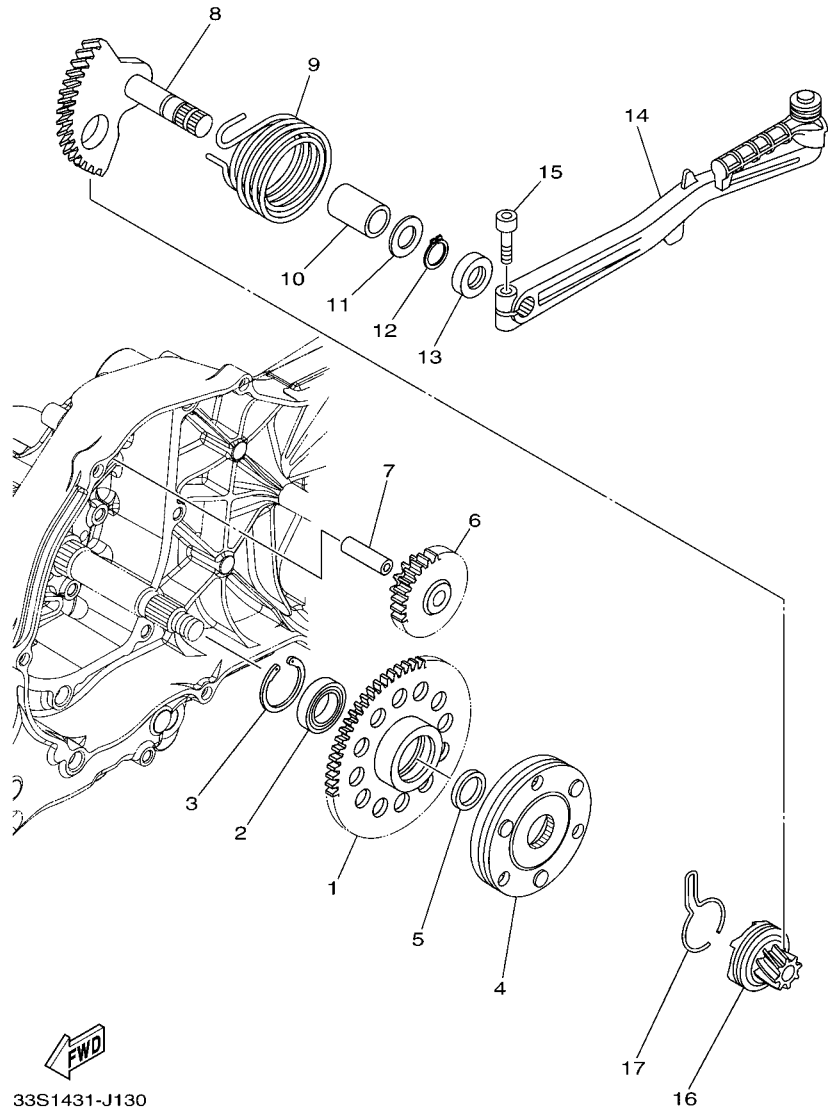
FIG. 10 CRANKCASE

REF. NO.	PART NO.	DESCRIPTION	2SV1				REMARKS
28	5LW-E3769-00	O-RING	1				
29	90340-12808	PLUG, STRAIGHT SCREW	1				
30	4YS-E1198-00	GASKET	1				

FIG. 11 CRANKCASE COVER 1



REF. NO.	PART NO.	DESCRIPTION	2SV1				REMARKS
1	1LB-E5411-00	COVER, CRANKCASE 1	1				
2	1LB-E5451-00	GASKET, CRANKCASE COVER 1	1				
3	5LW-E5371-01	BREATHER	1				
4	4ST-E443E-00	PIPE, DRAIN	1				
5	90467-11106	CLIP	1				
6	5LW-15659-01	SHAFT	1				
7	44D-E5191-00	PLATE	1				
8	95022-06010	BOLT, FLANGE	5				
9	44D-E5383-00	PLATE, BEARING COVER	2				
10	92012-06012	BOLT, BUTTON HEAD	2				
11	91810-14809	PIN, DOWEL	2				
12	95027-06035	BOLT, FLANGE	8				
13	95027-06045	BOLT, FLANGE	2				
14	95827-06090	BOLT, FLANGE	2				
15	95027-06080	BOLT, FLANGE	1				
16	44D-E5407-00	ELEMENT 1	1				
17	44D-E5471-00	DUCT, AIR	1				
18	44D-E5495-00	SEAL, PROTECTOR 1	1				
19	44D-E5472-00	SEAL, AIR DUCT	1				
20	95817-06020	BOLT, FLANGE	2				
21	1LB-E5413-00	COVER	1				
22	44D-E5473-00	DUCT, AIR	1				
23	33S-E5484-00	CLAMP 2	1				
24	1LB-E5316-00	DAMPER 1	1				



33S1431-J130

FIG. 12 STARTER

REF. NO.	PART NO.	DESCRIPTION	2SV1				REMARKS
1	44D-E5524-00	WHEEL, STARTER	1				
2	1LB-E5693-00	BEARING	1				
3	93450-32837	CIRCLIP	1				
4	44D-E5570-02	STARTER CLUTCH ASSY	1				
5	44D-E5598-00	COLLAR	1				
6	44D-E5512-00	GEAR, IDLER 1	1				
7	44D-E5521-00	SHAFT 1	1				
8	44D-E5601-00	KICK SHAFT ASSY	1				
9	90508-32768	SPRING, TORSION	1				
10	90380-15810	BUSH, SOLID	1				
11	90201-154E8	WASHER, PLATE (T=1.0)	1				
12	99009-15400	CIRCLIP	1				
13	93102-15801	OIL SEAL	1				
14	44D-E5620-00	KICK CRANK ASSY	1				
15	91317-06025	BOLT	1				
16	44D-E5630-00	KICK PINION ASSY	1				
17	5MX-E5673-00	CLIP	1				

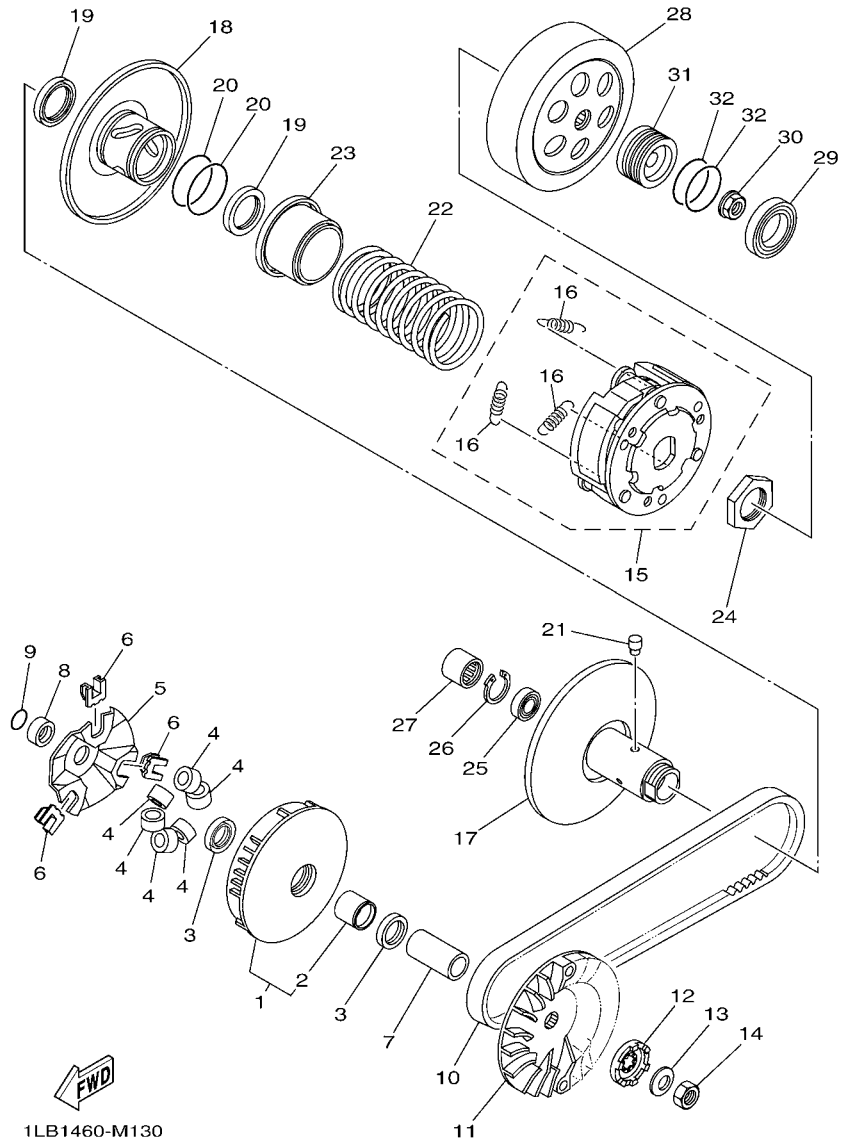


FIG. 13 CLUTCH

REF. NO.	PART NO.	DESCRIPTION	2SV1				REMARKS
1	44D-E7620-00	PRIMARY SLIDING SHEAVE COMP.	1				
2	90380-23800	.BUSH, SOLID	1				
3	93101-23801	OIL SEAL	2				
4	44D-E7632-00	WEIGHT	6				
5	44D-E7623-00	CAM	1				
6	44D-E7653-00	SLIDER	3				
7	90387-16815	COLLAR	1				
8	44D-E7645-00	COLLAR	1				
9	93210-16805	O-RING	1				
10	44D-E7641-00	V-BELT	1				
11	44D-E7611-00	SHEAVE, PRIMARY FIXED	1				
12	5MX-E5657-00	CLUTCH, ONEWAY	1				
13	90208-12808	WASHER, CONICAL SPRING	1				
14	90170-12800	NUT	1				
15	1LB-E6620-00	CLUTCH CARRIER ASSY	1				
16	1LB-E6626-00	.SPRING, CLUTCH WEIGHT 1	3				
17	1LB-E7660-00	SECONDARY FIXED SHEAVE COMP.	1				
18	1LB-E7670-00	SECONDARY SLIDING SHEAVE	1				
19	1LB-E7465-00	SEAL	2				
20	93210-42802	O-RING	2				
21	1LB-E7664-00	PIN, GUIDE	3				
22	1LB-E7683-00	SPRING, SECONDARY	1				
23	1LB-E7690-00	SPRING SEAT COMP.	1				
24	1LB-E7668-00	NUT	1				
25	93306-901Y6	BEARING	1				
26	1LB-E5744-00	CIRCLIP	1				
27	93317-417Y2	BEARING	1				

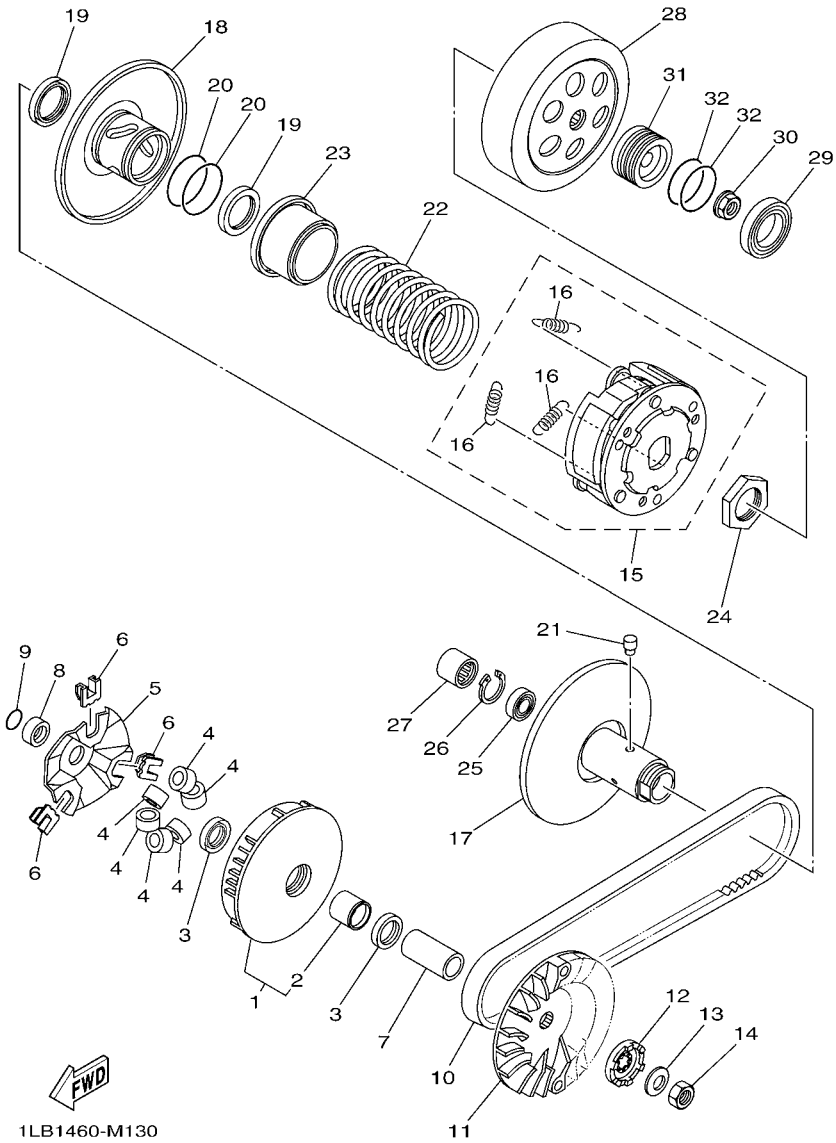
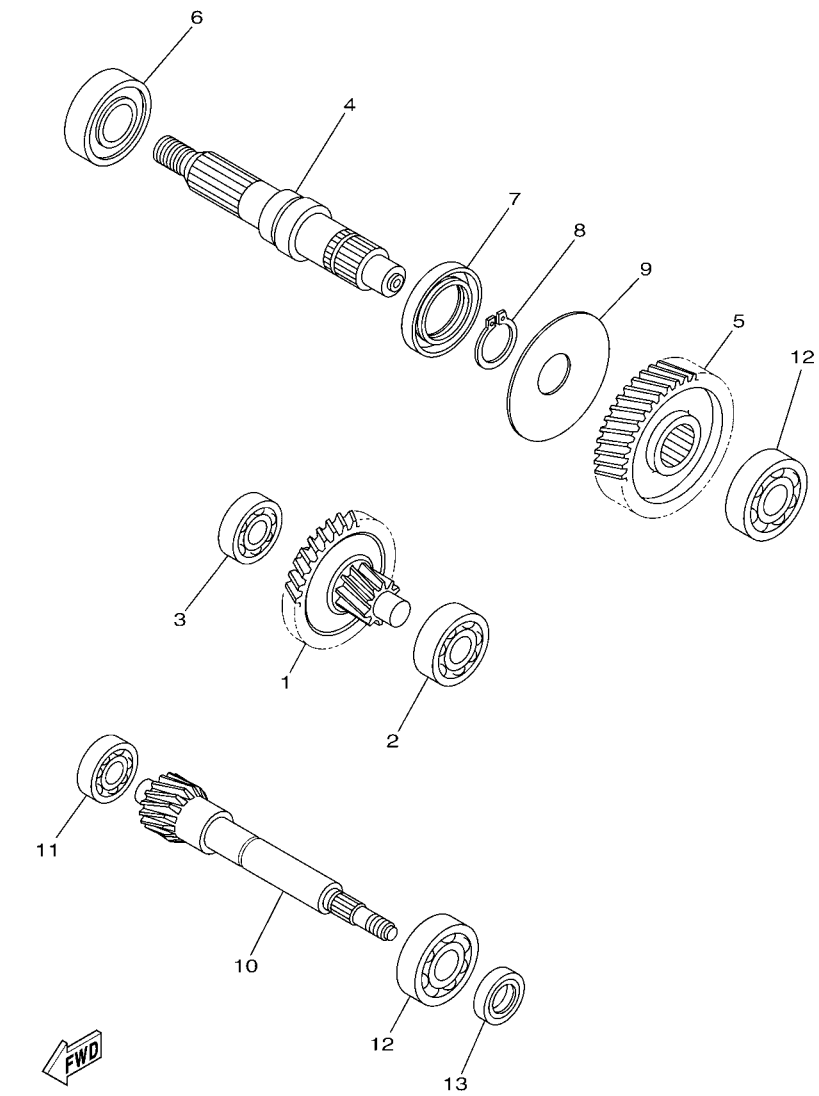


FIG. 13 CLUTCH

REF. NO.	PART NO.	DESCRIPTION	2SV1				REMARKS
28	1LB-E6611-00	CLUTCH HOUSING COMP.	1				
29	93306-082Y5	BEARING	1				UR
	93306-082Y2	BEARING	1				UR
30	90179-10803	NUT	1				
31	1LB-E7649-00	SPACER	1				
32	93210-28803	O-RING	2				



1PN1431-M140

FIG. 14 TRANSMISSION

REF. NO.	PART NO.	DESCRIPTION	2SV1				REMARKS
1	44D-E7410-00	MAIN AXLE COMP.(12T/42T)	1				
2	93306-302YF	BEARING	1				UR
	93306-301XT	BEARING	1				UR
3	93306-301YS	BEARING	1				
4	1LB-E7421-00	AXLE, DRIVE	1				
5	44D-E7211-00	GEAR, 1ST WHEEL (45T)	1				
6	93306-272X2	BEARING	1				
7	93102-32801	OIL SEAL	1				
8	99009-25400	CIRCLIP	1				
9	90208-25802	WASHER, CONICAL SPRING	1				
10	44D-E6111-00	GEAR, PRIMARY DRIVE (16T)	1				
11	93306-252XB	BEARING	1				UR
12	93306-303YJ	BEARING	2				UR
	93306-303YE	BEARING	2				UR
13	93102-17812	OIL SEAL	1				

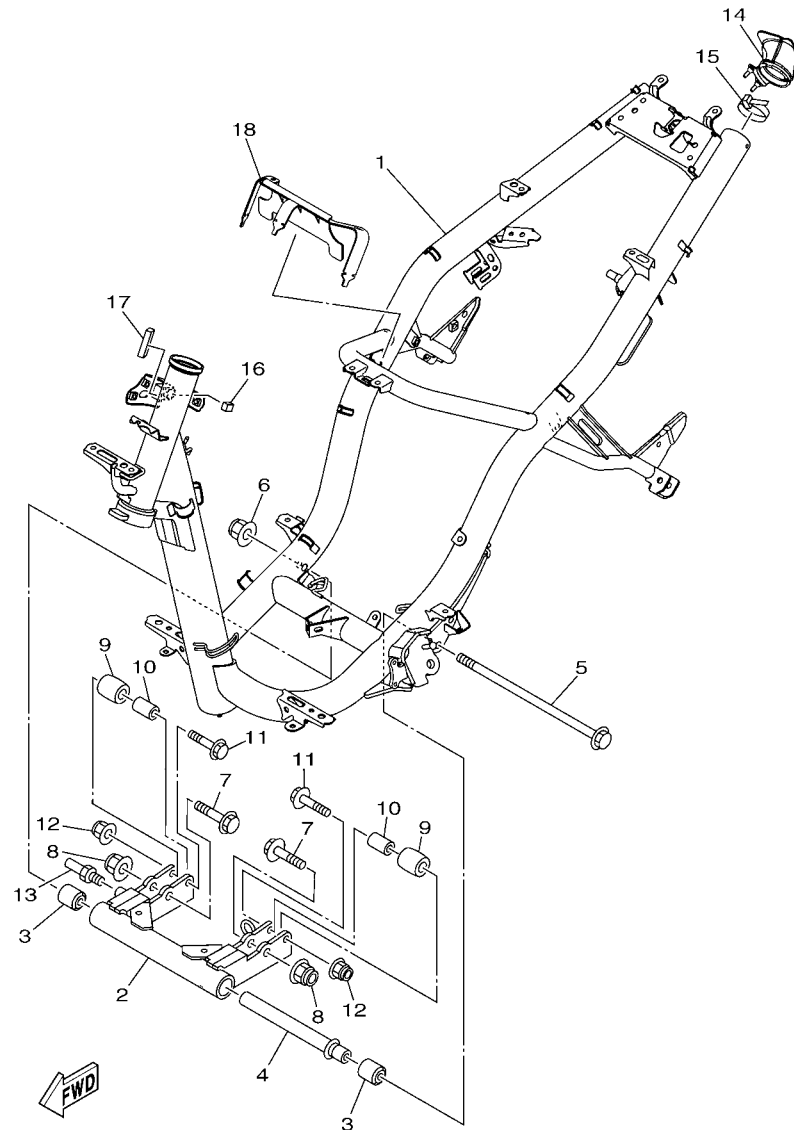
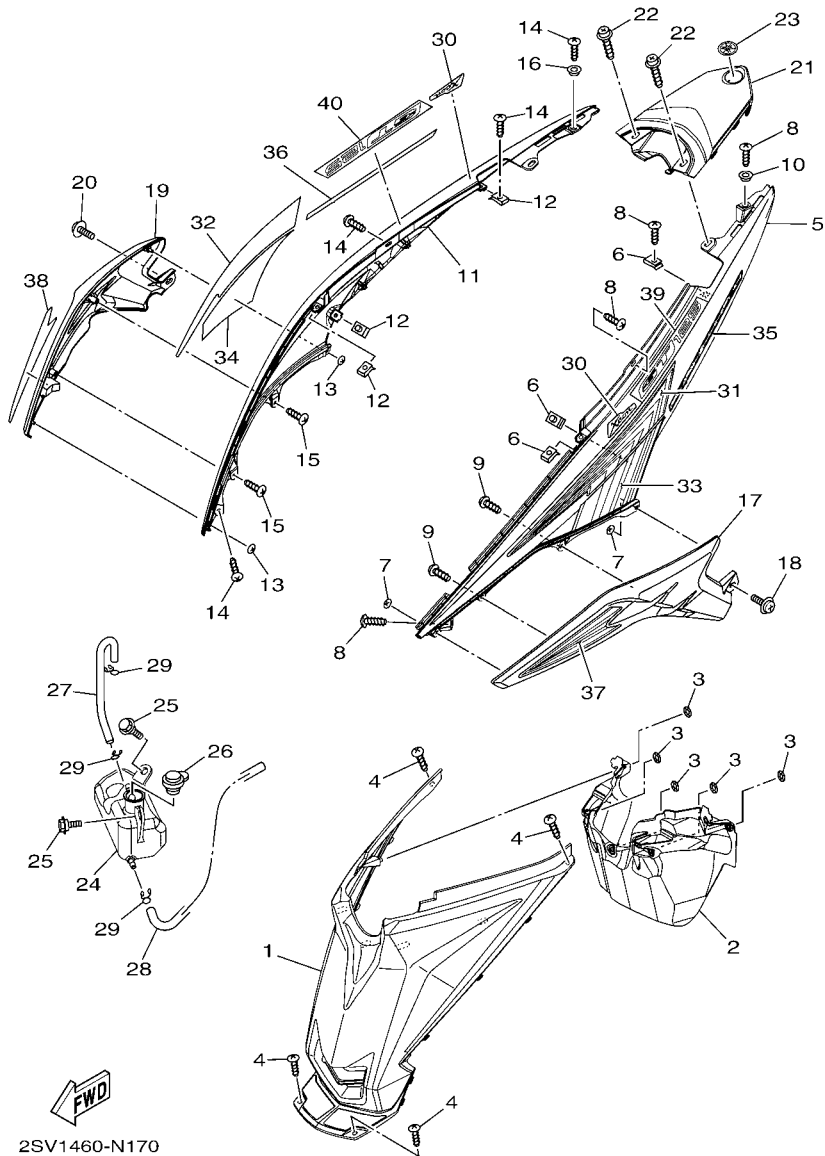


FIG. 15 FRAME

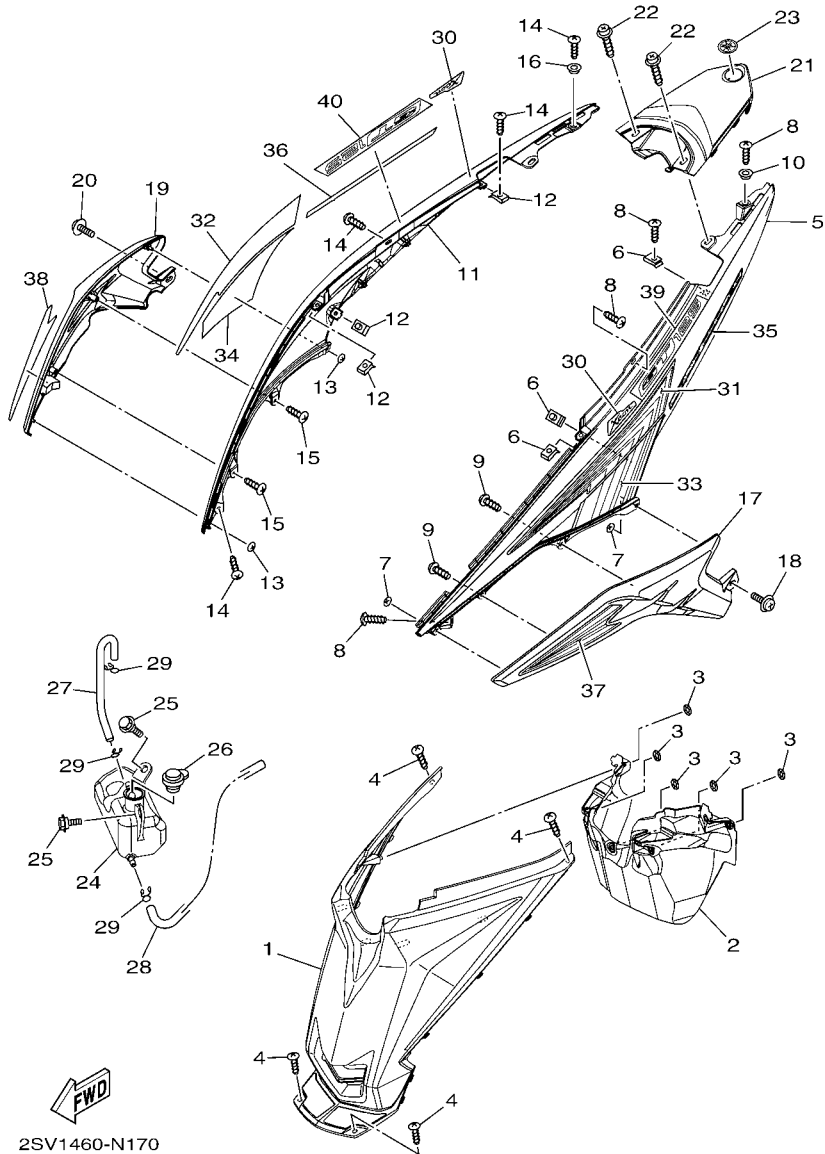
REF. NO.	PART NO.	DESCRIPTION	2SV1				REMARKS
1	1LB-F1110-00	FRAME COMP.	1				
2	1LB-F1410-00	ENGINE BRACKET COMP.	1				
3	90388-10800	DAMPER	2				
4	44D-F1459-00	SPACER	1				
5	44D-F2141-00	SHAFT, PIVOT	1				
6	95602-10200	NUT, U FLANGE	1				
7	90105-10283	BOLT, FLANGE	2				
8	95602-10200	NUT, U FLANGE	2				
9	44D-F7114-00	STOPPER, MAIN STAND	2				
10	90387-08821	COLLAR	2				
11	90105-088E3	BOLT, FLANGE	2				
12	95602-08200	NUT, SELF-LOCKING	2				
13	44D-F7435-00	BOLT	1				
14	44D-F117F-00	COVER	1				
15	90465-13152	CLAMP	1				
16	90520-08800	DAMPER, PLATE	1				
17	90520-08803	DAMPER, PLATE	1				
18	1LB-F117G-00	PROTECTOR	1				



2SV1460-N170

FIG. 17 SIDE COVER

REF. NO.	PART NO.	DESCRIPTION	2SV1			REMARKS
1	1LB-F172W-00	COVER	1			
2	1LB-F177F-00	COVER	1			
3	90183-06815	NUT, SPRING	5			
4	97707-50014	SCREW, TRUSS HEAD TAPPING	4			
5	44D-F1711-00-P0	COVER, SIDE 1	1			UR FOR SMX
	44D-F1711-00-P1	COVER, SIDE 1	1			UR FOR WM6
	44D-F1711-00-P6	COVER, SIDE 1	1			UR FOR DPRME
6	90183-05807	NUT, SPRING	3			
7	90183-04005	NUT, SPRING	2			
8	97707-50014	SCREW, TRUSS HEAD TAPPING	4			
9	97707-50012	SCREW, TRUSS HEAD TAPPING	2			
10	90387-058M9	COLLAR	1			
11	44D-F1721-00-P0	COVER, SIDE 2	1			UR FOR SMX
	44D-F1721-00-P1	COVER, SIDE 2	1			UR FOR WM6
	44D-F1721-00-P6	COVER, SIDE 2	1			UR FOR DPRME
12	90183-05807	NUT, SPRING	3			
13	90183-04005	NUT, SPRING	2			
14	97707-50014	SCREW, TRUSS HEAD TAPPING	4			
15	97707-50012	SCREW, TRUSS HEAD TAPPING	2			
16	90387-058M9	COLLAR	1			
17	2SV-F1731-00-P0	COVER, SIDE 3	1			BS4 FOR SMX,DPRME
	2SV-F1731-00-P1	COVER, SIDE 3	1			DBNM8 FOR WM6
18	90159-06801	SCREW, WITH WASHER	1			
19	2SV-F1741-00-P0	COVER, SIDE 4	1			BS4 FOR SMX,DPRME
	2SV-F1741-00-P1	COVER, SIDE 4	1			DBNM8 FOR WM6
20	90159-06801	SCREW, WITH WASHER	1			
21	44D-F171E-00-P7	COVER, SIDE 5	1			BS4 FOR SMX,DPRME



2SV1460-N170

FIG. 17 SIDE COVER

REF. NO.	PART NO.	DESCRIPTION	2SV1			REMARKS
21	44D-F171E-00-P8	COVER, SIDE 5	1			DBNM8 FOR WM6
22	90159-06067	SCREW, WITH WASHER	2			
23	40D-F1737-00	EMBLEM	1			
24	44D-F1871-00	TANK, RECOVERY	1			
25	90109-06887	BOLT	2			
26	1S7-F1875-00	CAP	1			
27	44D-F1816-00	PIPE 1	1			
28	44D-F1817-00	PIPE 2	1			
29	90467-08003	CLIP	3			
30	2SV-F173E-00	GRAPHIC 1	2			UR FOR SMX
	2SV-F173E-10	GRAPHIC 1	2			UR FOR WM6
	2SV-F173E-20	GRAPHIC 1	2			UR FOR DPRME
31	2SV-F174G-00	GRAPHIC 3	1			UR FOR SMX
	2SV-F174G-10	GRAPHIC 3	1			UR FOR WM6
	2SV-F174G-20	GRAPHIC 3	1			UR FOR DPRME
32	2SV-F174H-00	GRAPHIC 4	1			UR FOR SMX
	2SV-F174H-10	GRAPHIC 4	1			UR FOR WM6
	2SV-F174H-20	GRAPHIC 4	1			UR FOR DPRME
33	2SV-F174J-00	GRAPHIC 5	1			UR FOR SMX
	2SV-F174J-10	GRAPHIC 5	1			UR FOR WM6
	2SV-F174J-20	GRAPHIC 5	1			UR FOR DPRME
34	2SV-F174K-00	GRAPHIC 6	1			UR FOR SMX
	2SV-F174K-10	GRAPHIC 6	1			UR FOR WM6
	2SV-F174K-20	GRAPHIC 6	1			UR FOR DPRME
35	2SV-F173X-00	GRAPHIC 7	1			UR FOR SMX
	2SV-F173X-10	GRAPHIC 7	1			UR FOR WM6
	2SV-F173X-20	GRAPHIC 7	1			UR FOR DPRME

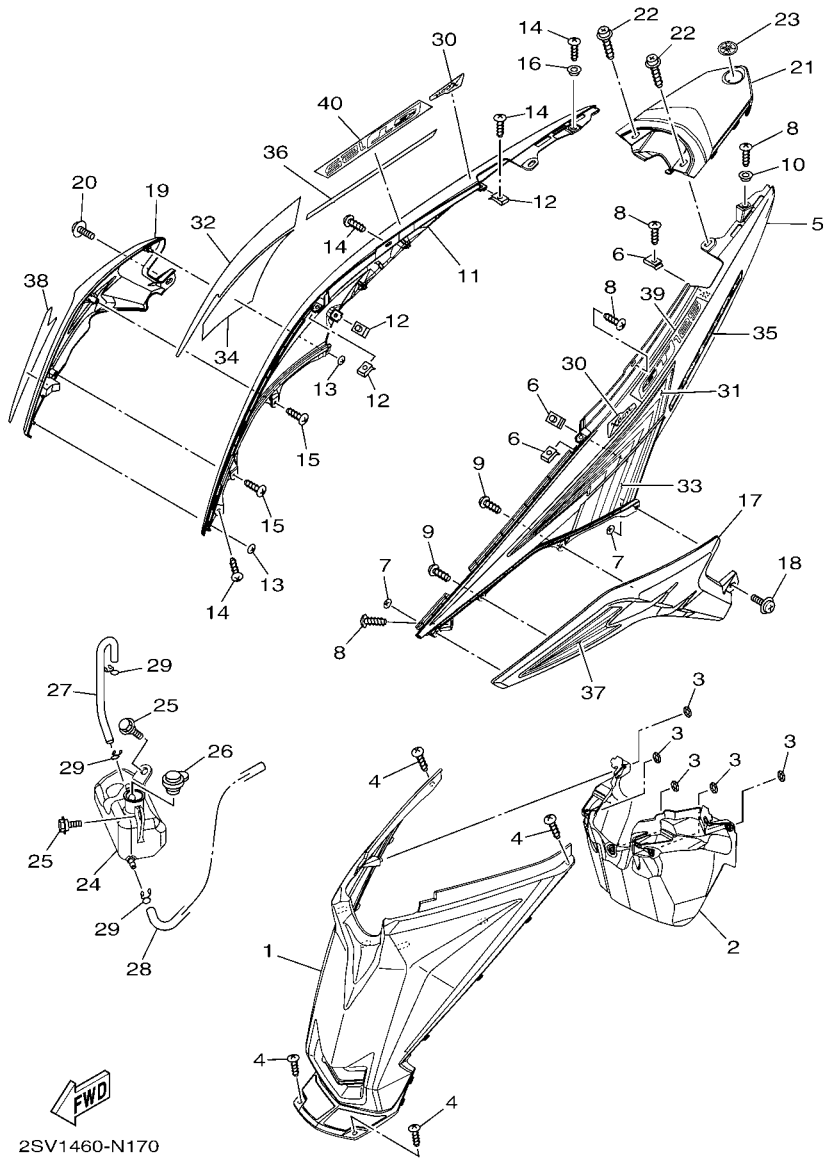
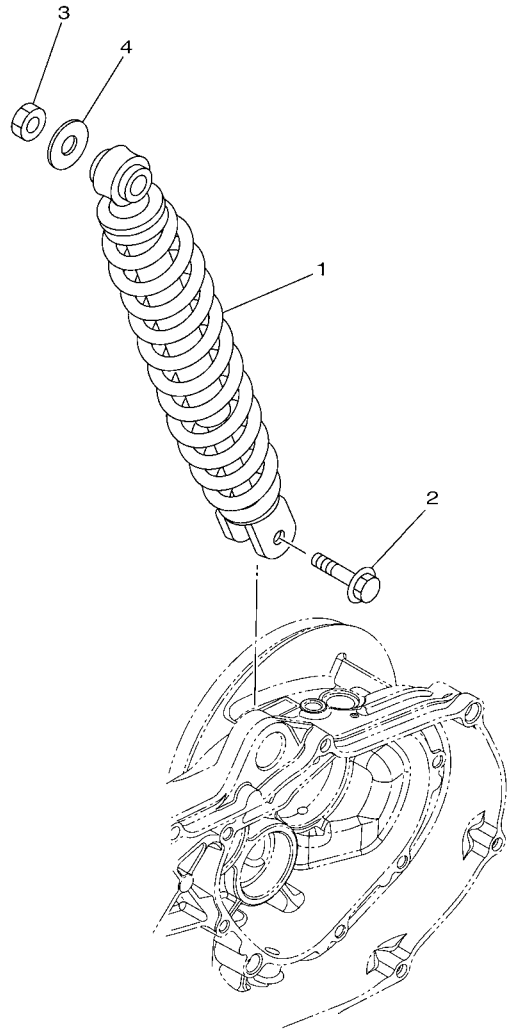


FIG. 17 SIDE COVER

REF. NO.	PART NO.	DESCRIPTION	2SV1			REMARKS
36	2SV-F173Y-00	GRAPHIC 8	1			UR FOR SMX
	2SV-F173Y-10	GRAPHIC 8	1			UR FOR WM6
	2SV-F173Y-20	GRAPHIC 8	1			UR FOR DPRME
37	2SV-F179L-00	GRAPHIC 9	1			UR FOR SMX
	2SV-F179L-10	GRAPHIC 9	1			UR FOR WM6
	2SV-F179L-20	GRAPHIC 9	1			UR FOR DPRME
38	2SV-F179M-00	GRAPHIC 10	1			UR FOR SMX
	2SV-F179M-10	GRAPHIC 10	1			UR FOR WM6
	2SV-F179M-20	GRAPHIC 10	1			UR FOR DPRME
39	2SV-F173B-00	EMBLEM 3D	1			
40	2SV-F174B-00	EMBLEM 3D	1			



1PN1431-M180

FIG. 18 REAR ARM & SUSPENSION

REF. NO.	PART NO.	DESCRIPTION	2SV1				REMARKS
1	1LB-F2210-20	SHOCK ABSORBER ASSY, REAR	1				
2	90105-088E8	BOLT, FLANGE	1				
3	95302-10600	NUT	1				
4	90201-10065	WASHER, PLATE	1				

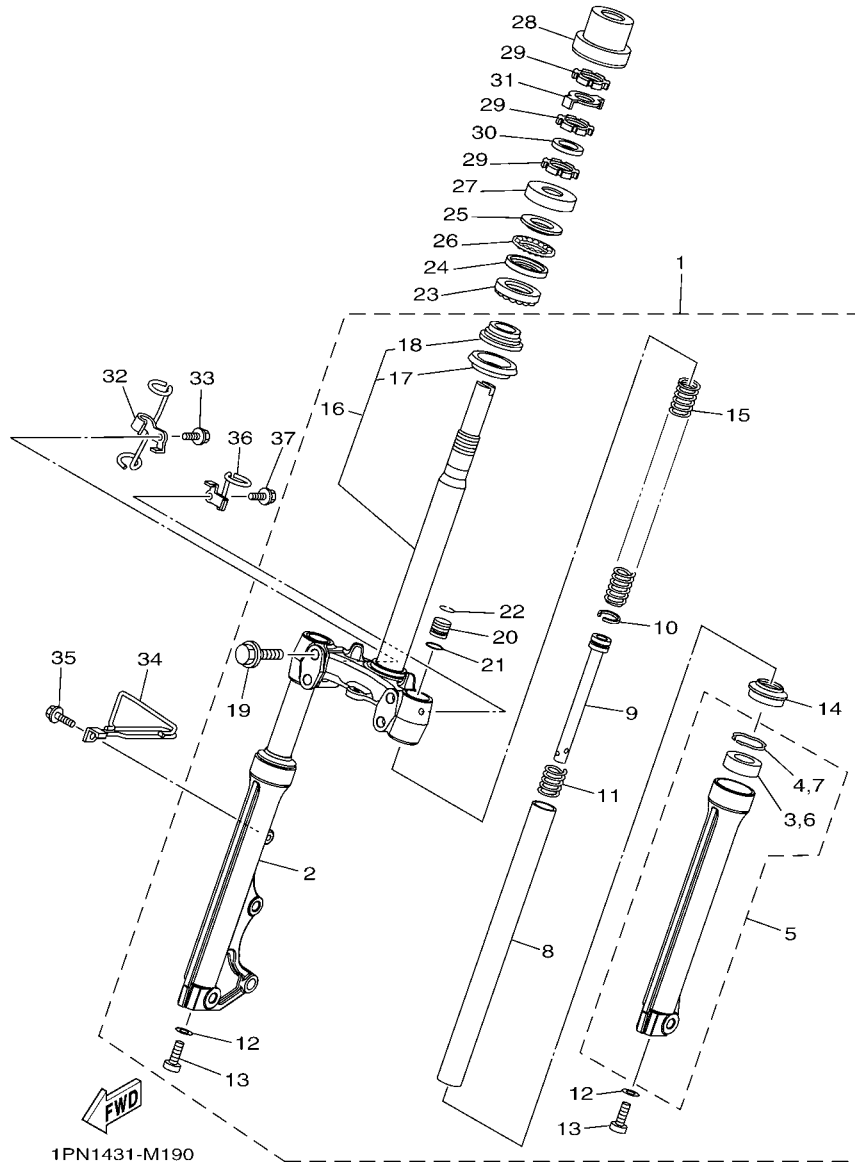


FIG. 19 STEERING

REF. NO.	PART NO.	DESCRIPTION	2SV1				REMARKS
1	1LB-F3100-00	FRONT FORK ASSY	1				
2	1LB-F3136-00	.TUBE, OUTER	1				
3	3AY-F3145-00	..OIL SEAL	1				
4	5P0-F3156-00	..RING, SNAP	1				
5	1LB-F3126-00	.TUBE, OUTER (L.H)	1				
6	3AY-F3145-00	..OIL SEAL	1				
7	5P0-F3156-00	..RING, SNAP	1				
8	1LB-F3110-00	.INNER TUBE COMP.1	2				
9	44D-F3170-00	.CYLINDER COMP., FRONT FORK	2				
10	2JG-F3157-00	.RING, PISTON	2				
11	5HV-F3152-00	.SPRING, SUB	2				
12	509-F3158-L0	.GASKET	2				
13	31B-F3181-00	.BOLT, HEXAGON SOCKET HEAD	2				
14	5LM-F3144-00	.SEAL, DUST	2				
15	1LB-F3141-00	.SPRING, FRONT FORK	2				
16	1LB-F3340-00	.UNDER BRACKET COMP.	1				
17	5VC-23462-00	..SEAL, DUST	1				
18	5BP-F3875-00	..BEARING, STEERING LOWER	1				
19	4D0-F3346-00	.BOLT 1	4				
20	28D-F3111-00	.BOLT, CAP	2				
21	2JG-F3147-00	.O-RING	2				
22	31B-F3153-00	.RING, SNAP	2				
23	5BP-F3873-01	BEARING, STEERING UPPER	1				
24	54P-F3412-00	RACE, BALL 2	1				
25	54P-F3411-00	RACE, BALL 1	1				
26	5TL-F341E-10	RETAINER, BALL BEARING	1				
27	3AY-F3416-00	COVER, BALL RACE 2	1				

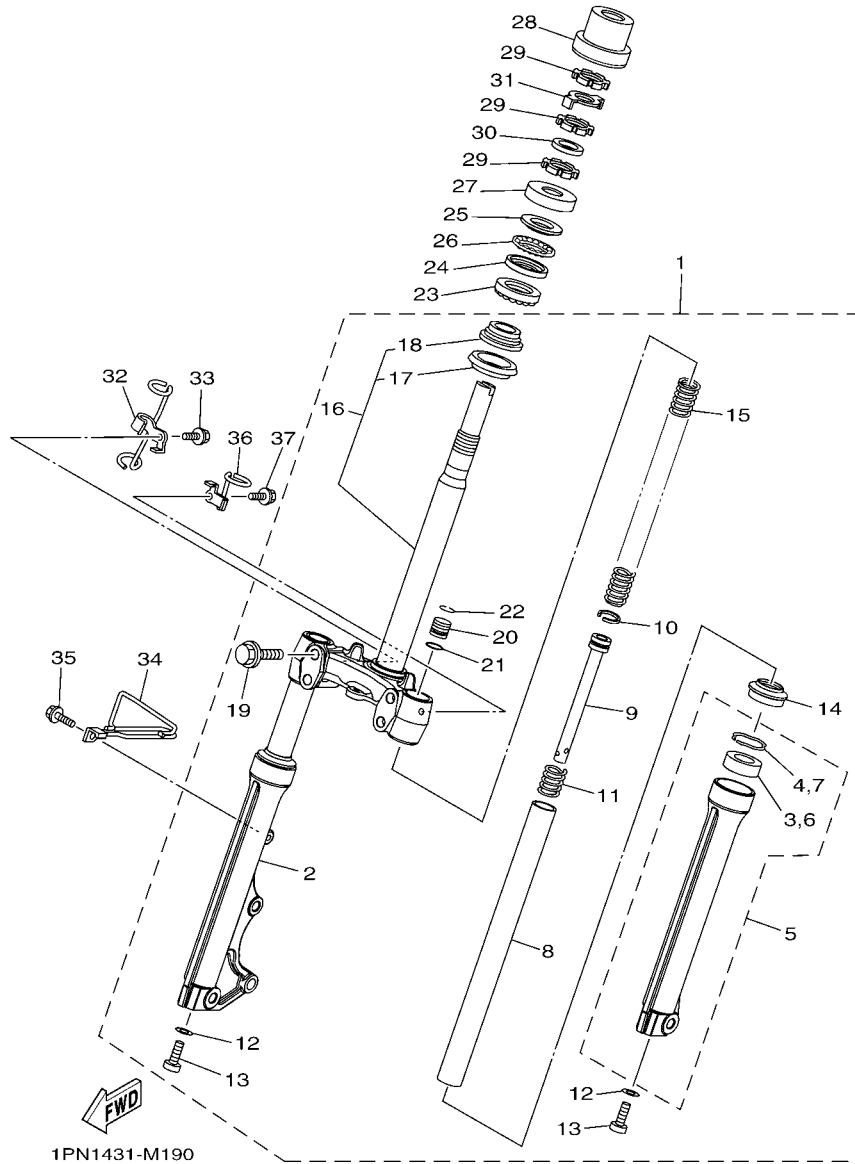


FIG. 19 STEERING

REF. NO.	PART NO.	DESCRIPTION	2SV1				REMARKS
28	1LB-F3415-00	COVER, BALL RACE 1	1				
29	90179-25810	NUT	3				
30	90202-26142	WASHER, PLATE	1				
31	1PA-F3418-00	WASHER, SPECIAL	1				
32	1LB-F5875-00	HOLDER, BRAKE HOSE 1	1				
33	95022-06010	BOLT, FLANGE	1				
34	1LB-F5876-00	HOLDER, BRAKE HOSE 2	1				
35	95022-06010	BOLT, FLANGE	1				
36	44D-F1161-00	HOLDER, CABLE	1				
37	95022-06010	BOLT, FLANGE	1				

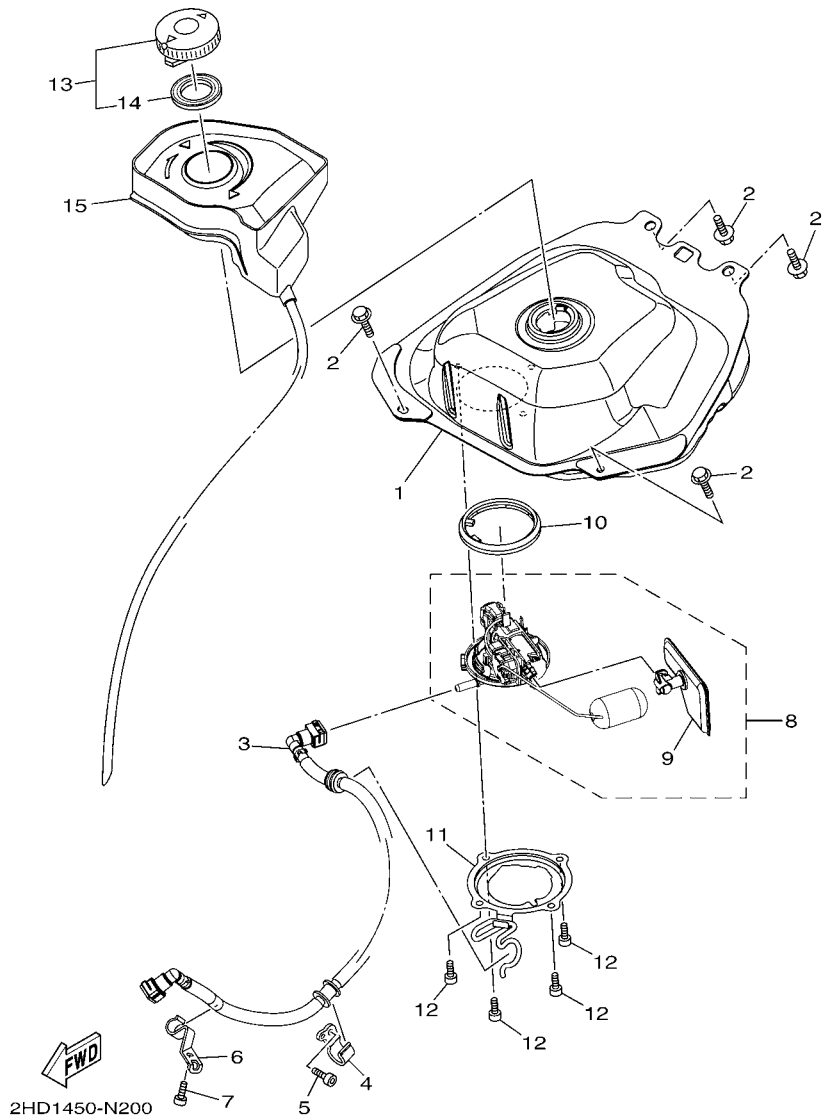


FIG. 20 FUEL TANK

REF. NO.	PART NO.	DESCRIPTION	2SV1				REMARKS
1	1LB-F4110-00	FUEL TANK COMP.	1				
2	95802-06014	BOLT, FLANGE	4				
3	1LB-E3971-00	PIPE, FUEL 1	1				
4	1LB-F419A-00	HOLDER	1				
5	91312-05014	BOLT	1				
6	1LB-F419F-00	BRACKET, CANISTOR	1				
7	91312-05014	BOLT	1				
8	1PN-E3907-01	FUEL PUMP COMP.	1				
9	54P-E3915-00	.FILTER, FUEL SUCTION	1				
10	54P-F414G-00	SEAL	1				
11	1LB-F4425-00	BRACKET, FUEL PUMP 1	1				
12	91312-05010	BOLT	4				
13	4YY-F4610-10	CAP ASSY	1				
14	4YY-F4612-10	.PACKING, CAP	1				
15	1LB-F414A-00	COVER, FILLER	1				

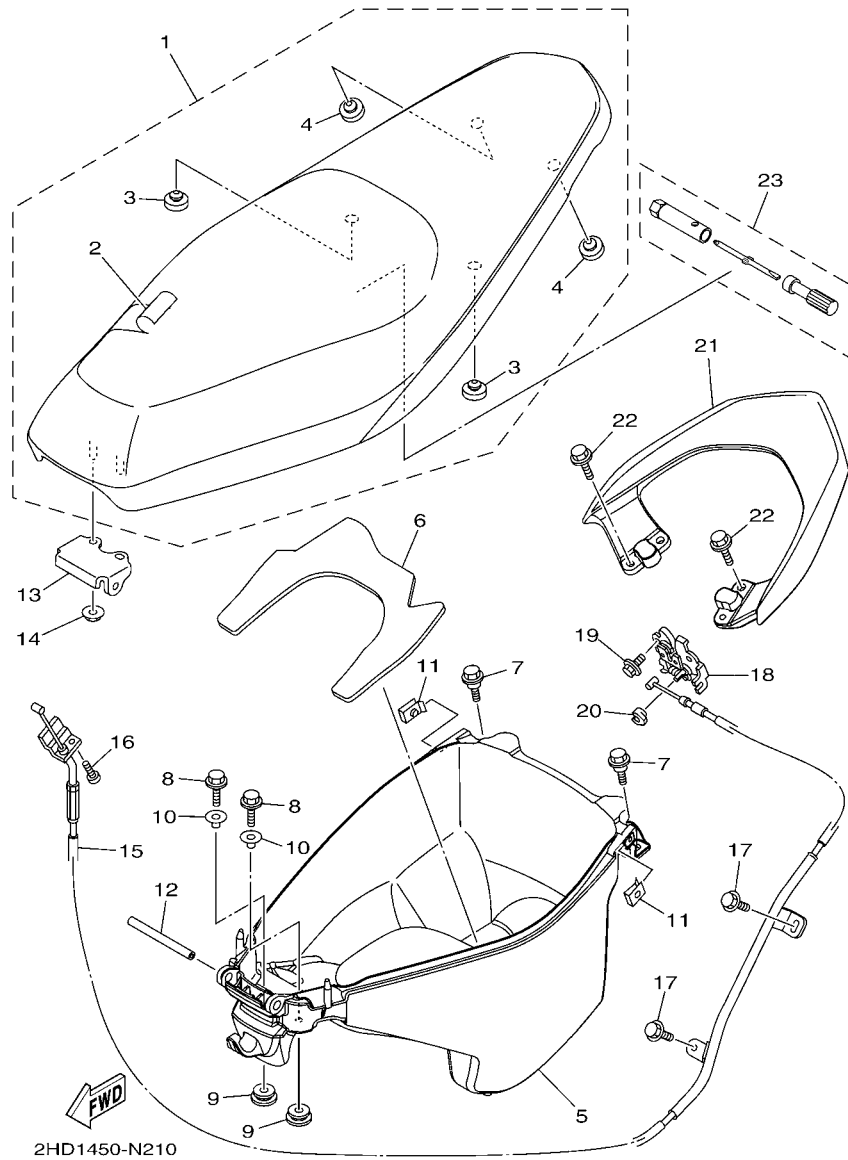
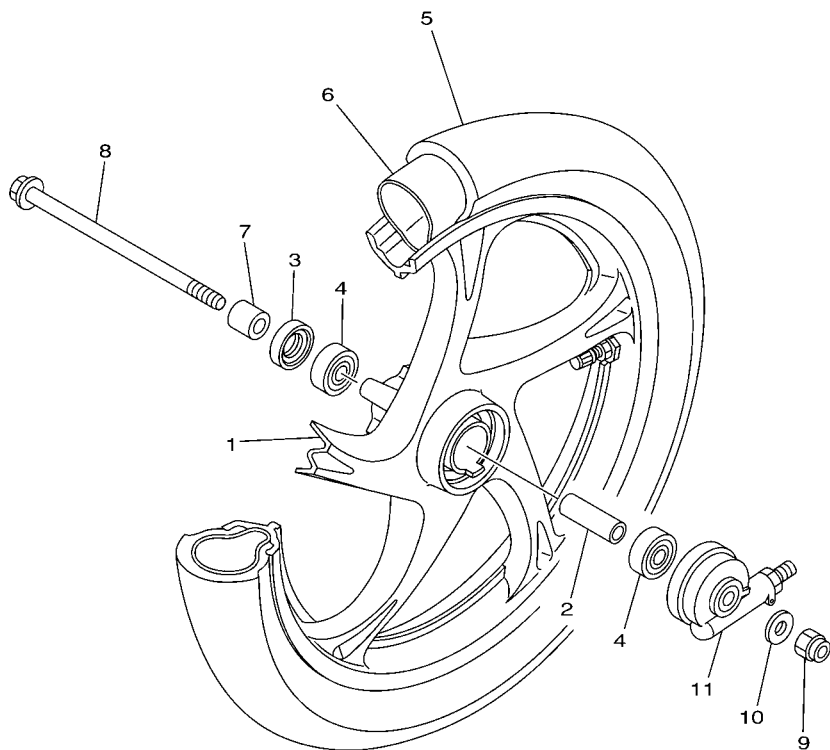


FIG. 21 SEAT

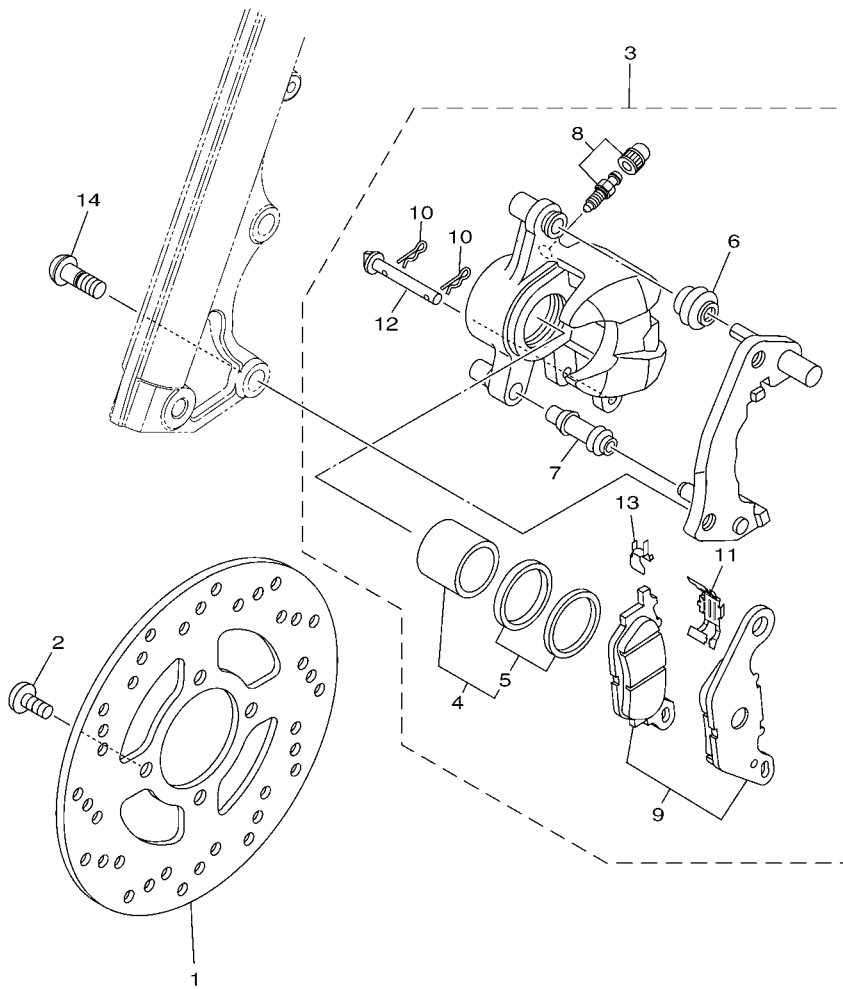
REF. NO.	PART NO.	DESCRIPTION	2SV1				REMARKS
1	44D-F4730-80	DOUBLE SEAT ASSY	1				
2	44D-F470F-80	.SEAT COVER COMP.	1				
3	3C1-F4741-00	.PAD, SEAT	2				
4	5BP-F4741-00	.PAD, SEAT	2				
5	1LB-F473R-00	BOX 1	1				
6	1LB-F4747-00	DAMPER, SEAT	1				
7	90109-06887	BOLT	2				
8	95822-06020	BOLT, FLANGE	2				
9	90480-14823	GROMMET	2				
10	90387-068G3	COLLAR	2				
11	90183-05807	NUT, SPRING	2				
12	5TL-F4727-00	PIN, SEAT FITTING	1				
13	5TL-F4726-00	HINGE, SEAT	1				
14	95702-06500	NUT, FLANGE	2				
15	44D-F478E-01	CABLE, SEAT LOCK	1				
16	98502-05010	SCREW, PAN HEAD	1				
17	95022-06012	BOLT, FLANGE	2				
18	40D-F4780-01	SEAT LOCK ASSY	1				
19	95022-06010	BOLT, FLANGE	2				
20	1S7-F4768-00	STOPPER	1				
21	44D-F4773-00-PB	HANDLE, SEAT	1				BS4 FOR SMX,DPRME
	44D-F4773-00-P1	HANDLE, SEAT	1				DBNM8 FOR WM6
22	95822-06016	BOLT, FLANGE	4				
23	44D-F8100-00	TOOL KIT	1				

FIG. 22 FRONT WHEEL



REF. NO.	PART NO.	DESCRIPTION	2SV1				REMARKS
1	5TL-F5168-00-1X	CAST WHEEL, FRONT	1				YB/WSA
2	90560-10292	SPACER	1				
3	93106-20816	OIL SEAL	1				
4	93306-300YK	BEARING	2				
5	94107-14811	TIRE (70/90-14 M/C 34P NF59)	1				INOUE
6	94207-14802	TUBE (70/90-14M/C TR4)	1				INOUE
7	90387-10837	COLLAR	1				
8	3AY-F5181-01	AXLE, WHEEL	1				
9	90185-10012	NUT, SELF-LOCKING	1				
10	90201-10831	WASHER, PLATE	1				
11	5TL-F5190-01	GEAR UNIT ASSY	1				

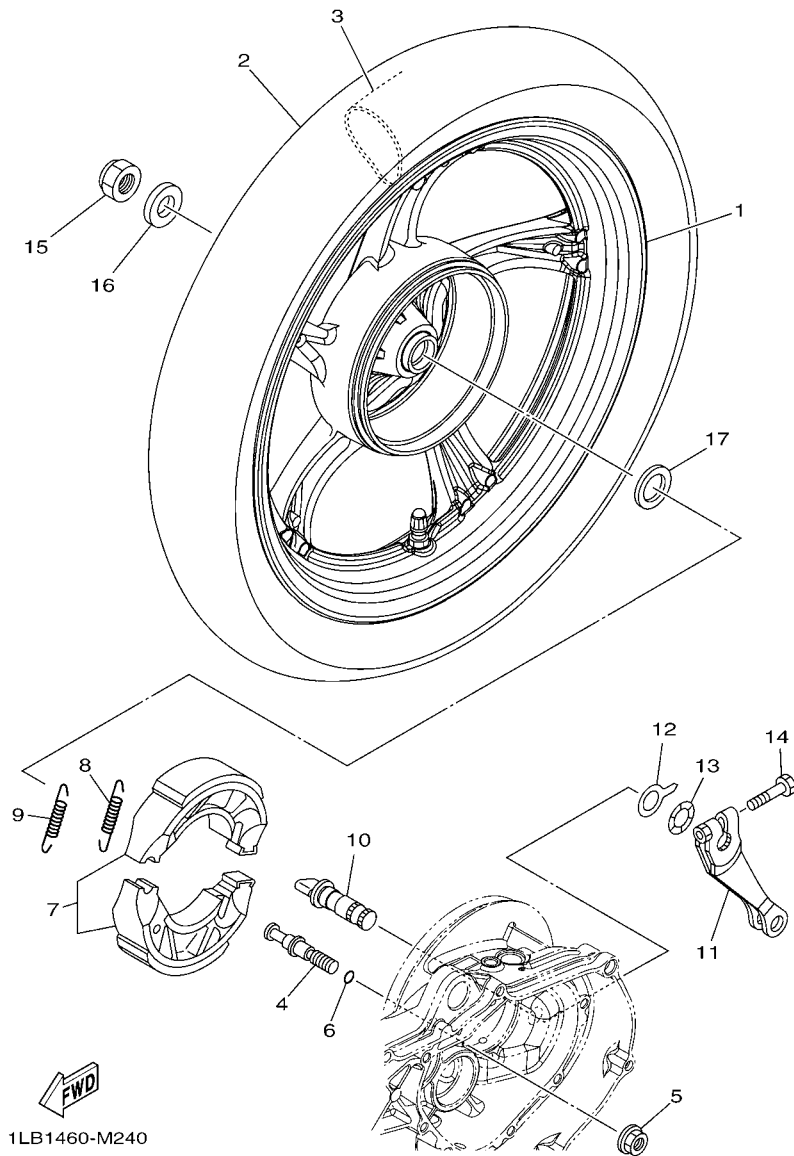

5WP4422-C220



1LB2460-M230

FIG. 23 FRONT BRAKE CALIPER

REF. NO.	PART NO.	DESCRIPTION	2SV1				REMARKS
1	5TL-F582U-30	DISK, BRAKE (RIGHT)	1				
2	90111-08815	BOLT,HEX. SOCKET BUTTON	4				
3	54P-F580U-01	CALIPER ASSY (RIGHT)	1				
4	5P0-F5802-00	.PISTON ASSY, CALIPER	1				
5	5YP-F5803-50	..CALIPER SEAL KIT	1				
6	5YP-F5917-00	.BOOT, CALIPER	1				
7	5YP-F5937-00	.BOOT 2	1				
8	4C9-W0048-00	.BLEED SCREW KIT	1				
9	3C1-F5805-10	.BRAKE PAD KIT	1				
10	5YP-F5925-01	.CLIP	2				
11	5P0-F5919-00	.SUPPORT, PAD	1				
12	5YP-F5924-00	.PIN, PAD	1				
13	5YP-F5939-00	.CLIP, PAD	1				
14	90149-10805	SCREW	2				



1LB1460-M240

FIG. 24 REAR WHEEL

REF. NO.	PART NO.	DESCRIPTION	2SV1				REMARKS
1	33S-F5338-00-1X	CAST WHEEL, REAR	1				YB/WSA
2	94109-14807	TIRE (90/80-14 M/C 49P NR76A)	1				INOUE
3	94209-14800	TUBE(90/80-14M/C TR4)	1				INOUE
4	5LW-F5326-01	PIN, PIVOT	1				
5	95702-10500	NUT, FLANGE	1				
6	93210-07802	O-RING	1				
7	1LB-F530K-00	BRAKE SHOE SET	1				
8	90506-12001	SPRING, TENSION	1				
9	90506-15001	SPRING, TENSION	1				
10	5MX-F5351-00	CAMSHAFT	1				
11	44D-F5355-00	LEVER, CAMSHAFT	1				
12	5MX-F533A-00	PLATE, INDICATOR	1				
13	90206-14093	WASHER, WAVE	1				
14	90101-06046	BOLT	1				
15	90185-16800	NUT, SELF-LOCKING	1				
16	90201-16810	WASHER, PLATE	1				
17	90201-220J8	WASHER, PLATE	1				

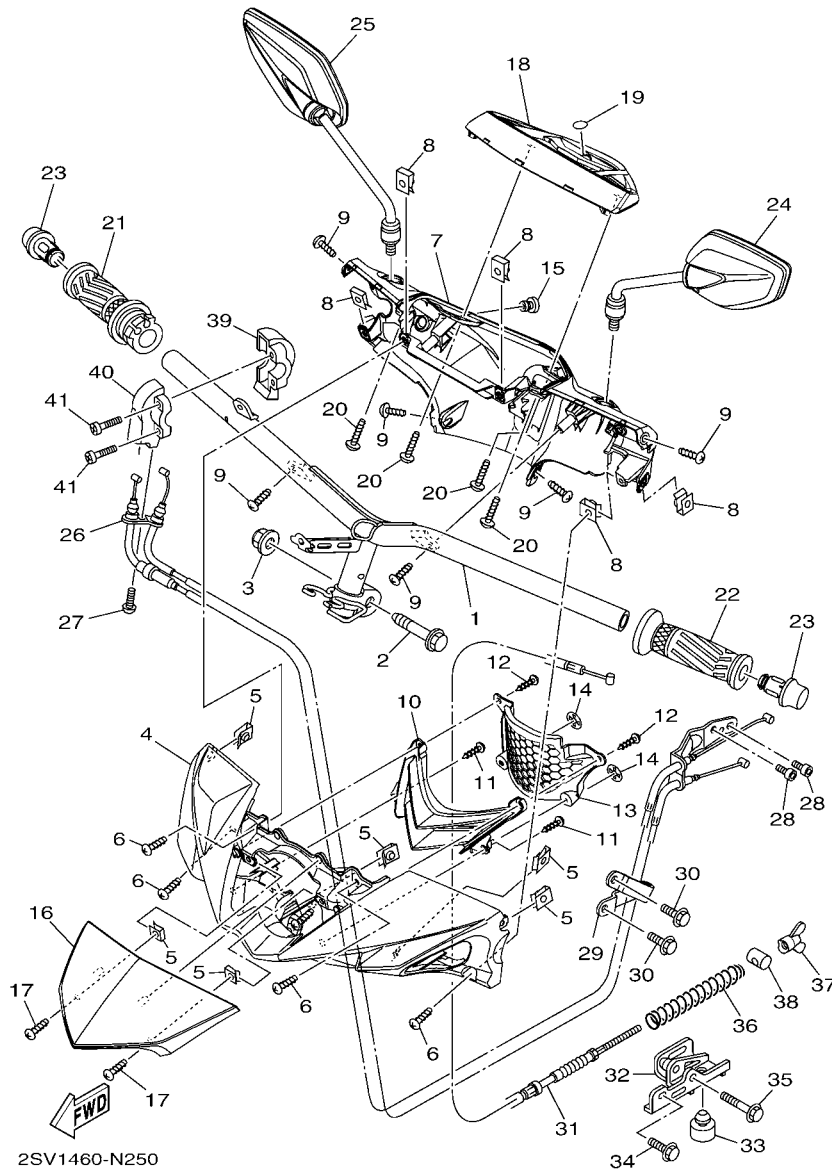


FIG. 25 STEERING HANDLE & CABLE

REF. NO.	PART NO.	DESCRIPTION	2SV1				REMARKS
1	1LB-F6110-01	HANDLE COMP.	1				
2	90105-10896	BOLT, FLANGE	1				
3	90185-10011	NUT, SELF-LOCKING	1				
4	2SV-F6143-00-P0	COVER, HANDLE UPPER 1	1				UR FOR SMX
	2SV-F6143-00-P1	COVER, HANDLE UPPER 1	1				UR FOR WM6
	2SV-F6143-00-P2	COVER, HANDLE UPPER 1	1				UR FOR DPRME
5	90183-05807	NUT, SPRING	6				
6	97707-50014	SCREW, TRUSS HEAD TAPPING	4				
7	1LB-F6145-00	COVER, HANDLE UPPER 2	1				
8	90183-05807	NUT, SPRING	5				
9	97707-50014	SCREW, TRUSS HEAD TAPPING	6				
10	2SV-F6231-00	COVER, HANDLE FRONT 1	1				
11	97707-40008	SCREW, TAPPING	2				
12	97707-50014	SCREW, TRUSS HEAD TAPPING	2				
13	2SV-F6216-00	CAP, HANDLEBAR COVER	1				
14	90183-04005	NUT, SPRING	2				
15	4US-F6199-00	PLUG, BLIND	1				
16	2SV-F61AA-00-P0	VISOR	1				BS4 FOR SMX,DPRME
	2SV-F61AA-00-P1	VISOR	1				DBNM8 FOR WM6
17	97707-50014	SCREW, TRUSS HEAD TAPPING	2				
18	2SV-H3559-00-P0	COVER, METER	1				SMX
19	44D-F3108-00	EMBLEM	1				
20	97702-50020	SCREW, TAPPING	4				
21	44D-F6240-00	GRIP ASSY	1				
22	44D-F6241-00	GRIP	1				
23	54P-F6246-00	END, GRIP	2				
24	1LB-F6280-00	REAR VIEW MIRROR ASSY (LEFT)	1				

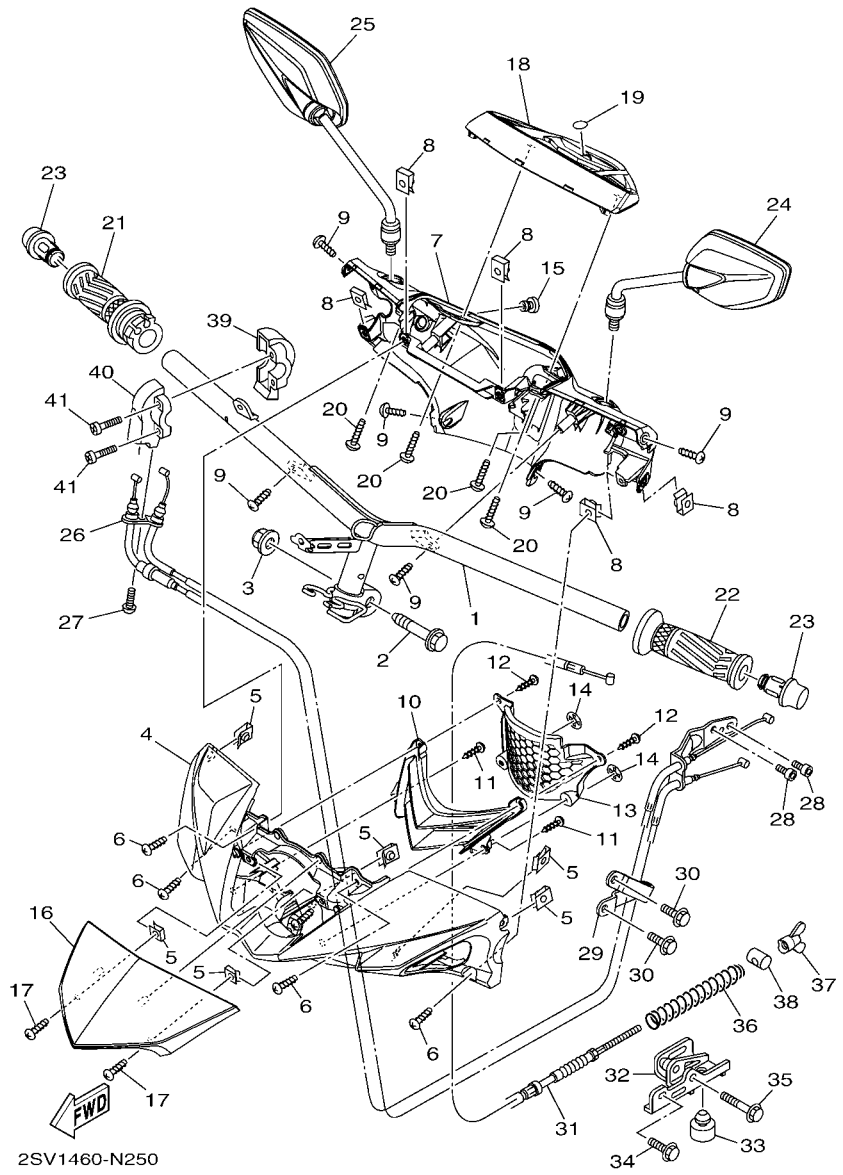
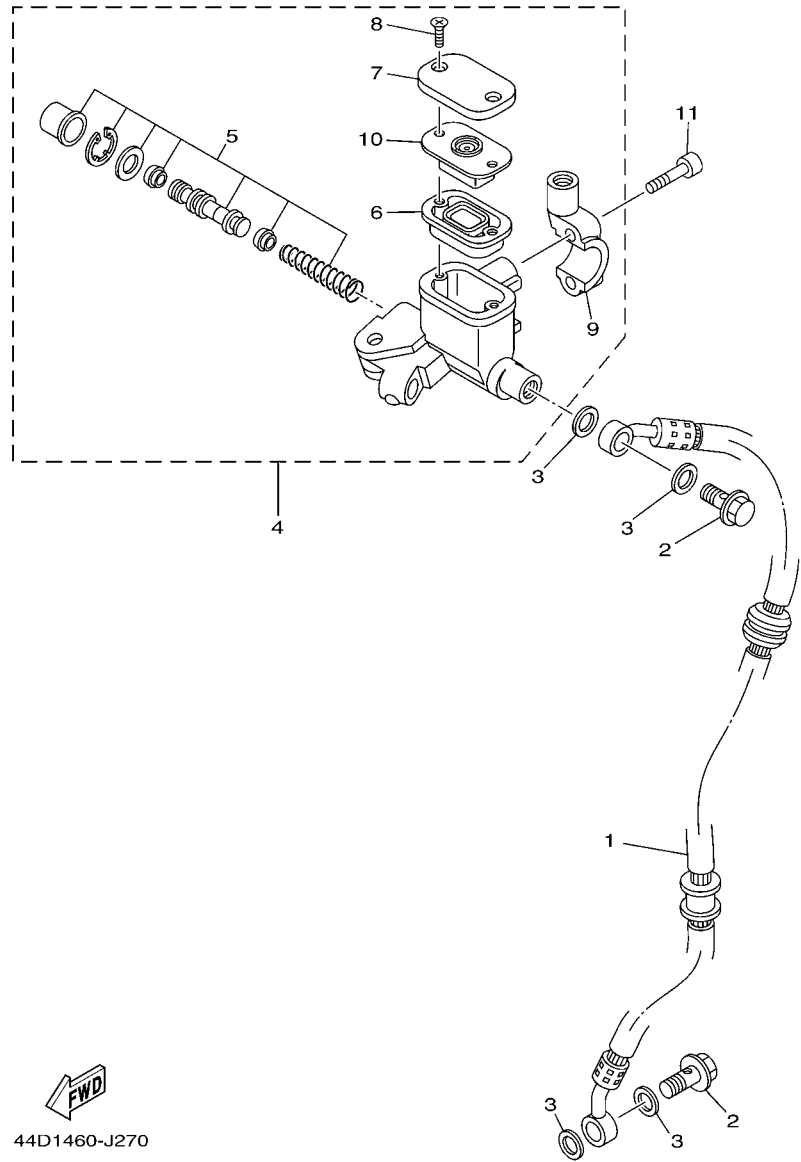


FIG. 25 STEERING HANDLE & CABLE

REF. NO.	PART NO.	DESCRIPTION	2SV1				REMARKS
25	1LB-F6290-00	REAR VIEW MIRROR ASSY (RIGHT)	1				
26	1LB-F6301-00	THROTTLE CABLE ASSY	1				
27	92017-05016	BOLT, BUTTON HEAD	1				
28	91312-05008	BOLT	2				
29	1LB-F6279-00	GUIDE, CABLE	1				
30	95022-06012	BOLT, FLANGE	2				
31	1LB-F6351-00	CABLE, BRAKE	1				
32	44D-F637G-00	HOLDER, WIRE	1				
33	4YY-F7114-00	STOPPER, MAIN STAND	1				
34	95022-06014	BOLT, FLANGE	1				
35	95022-06030	BOLT, FLANGE	1				
36	90501-16801	SPRING, COMPRESSION	1				
37	90175-06013	NUT, WING	1				
38	90249-12008	PIN	1				
39	44D-F6281-00	CAP, GRIP UPPER	1				
40	44D-F6282-00	CAP, GRIP UNDER	1				
41	98502-05025	SCREW, PAN HEAD	2				



44D1460-J270

FIG. 26 FRONT MASTER CYLINDER

REF. NO.	PART NO.	DESCRIPTION	2SV1				REMARKS
1	1LB-F5872-00	HOSE, BRAKE 1	1				
2	90401-10812	BOLT, UNION	2				
3	90201-10118	WASHER, PLATE	4				
4	5P0-F583T-03	MASTER CYLINDER ASSY	1				
5	5P0-W0041-00	.CYLINDER KIT, MASTER	1				
6	5P0-F5854-00	.DIAPHRAGM, RESERVOIR	1				
7	5P0-F5852-00	.CAP, RESERVOIR	1				
8	36Y-2589H-00	.SCREW	2				
9	5TL-F5867-01	.BRACKET, MASTER CYLINDER	1				
10	5P0-F5855-00	.BUSH, DIAPHRAGM	1				
11	91312-06025	BOLT	2				

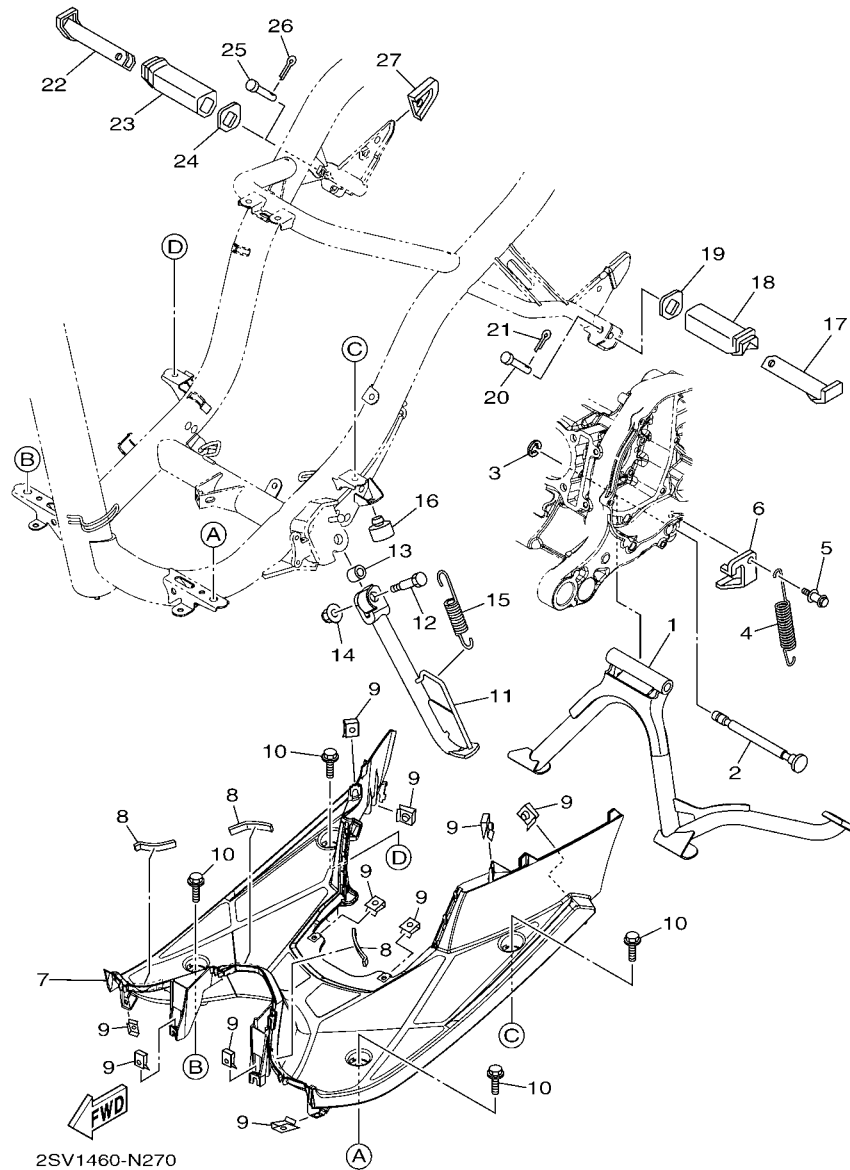


FIG. 27 STAND & FOOTREST

REF. NO.	PART NO.	DESCRIPTION	2SV1				REMARKS
1	1LB-F7111-00	STAND, MAIN	1				
2	44D-F7112-00	SHAFT, MAIN STAND	1				
3	99001-08600	CIRCLIP	1				
4	90506-35816	SPRING, TENSION	1				
5	1LB-F7254-00	HOOK	1				
6	44D-F7267-01	GUIDE, WIRE	1				
7	44D-F7481-01	BOARD, FOOTREST	1				
8	90520-03822	DAMPER, PLATE	3				
9	90183-05807	NUT, SPRING	10				
10	90119-06044	BOLT, WITH WASHER	4				
11	1LB-F7311-00	STAND, SIDE	1				
12	90101-08847	BOLT	1				
13	90387-08820	COLLAR	1				
14	95602-08200	NUT, SELF-LOCKING	1				
15	40D-F7116-00	SPRING, MAIN STAND	1				
16	4YY-F7114-00	STOPPER, MAIN STAND	1				
17	5LM-F7431-00	FOOTREST, REAR 1	1				
18	5LM-F7433-00	COVER, REAR FOOTREST	1				
19	5LM-F7445-00	PLATE 1	1				
20	90240-08144	PIN, CLEVIS	1				
21	91401-25015	PIN, COTTER	1				
22	5LM-F7441-00	FOOTREST, REAR 2	1				
23	5LM-F7444-00	COVER, REAR FOOTREST	1				
24	5LM-F7445-00	PLATE 1	1				
25	90240-08144	PIN, CLEVIS	1				
26	91401-25015	PIN, COTTER	1				
27	44D-F7491-00	PROTECTOR	1				

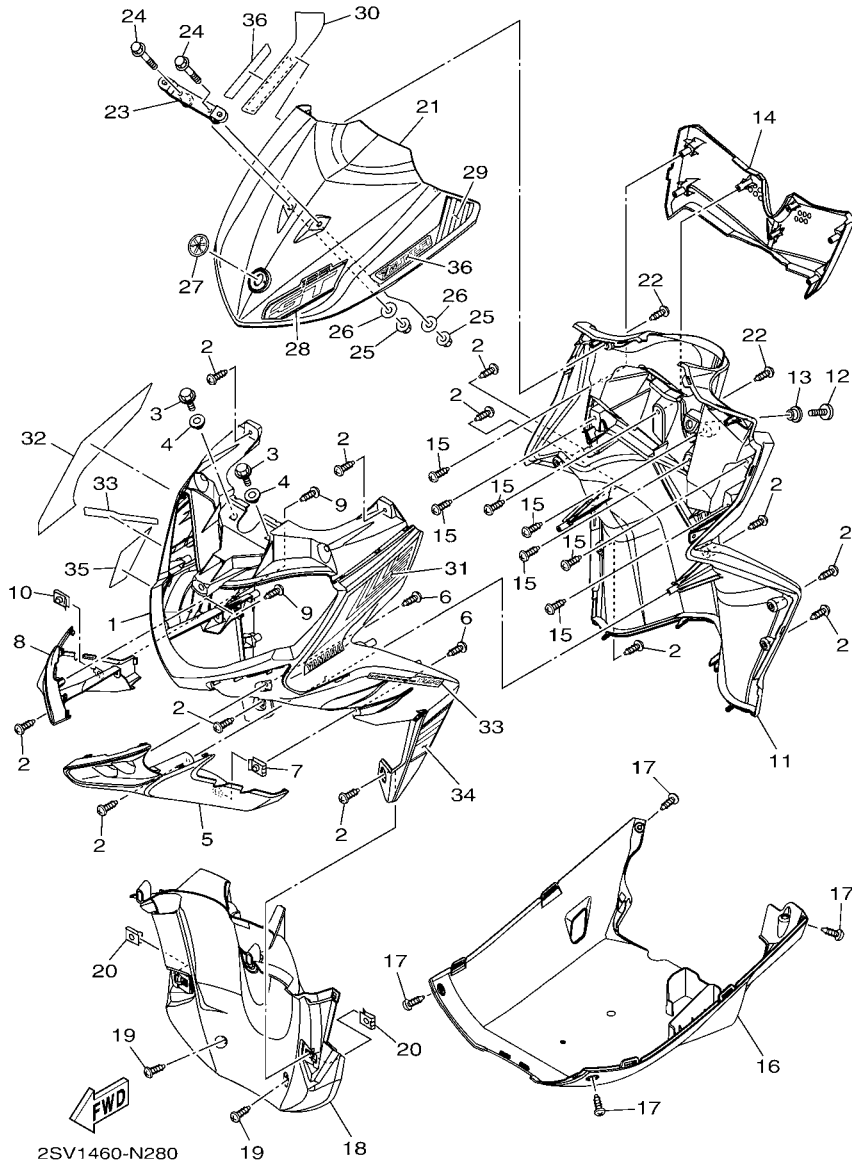
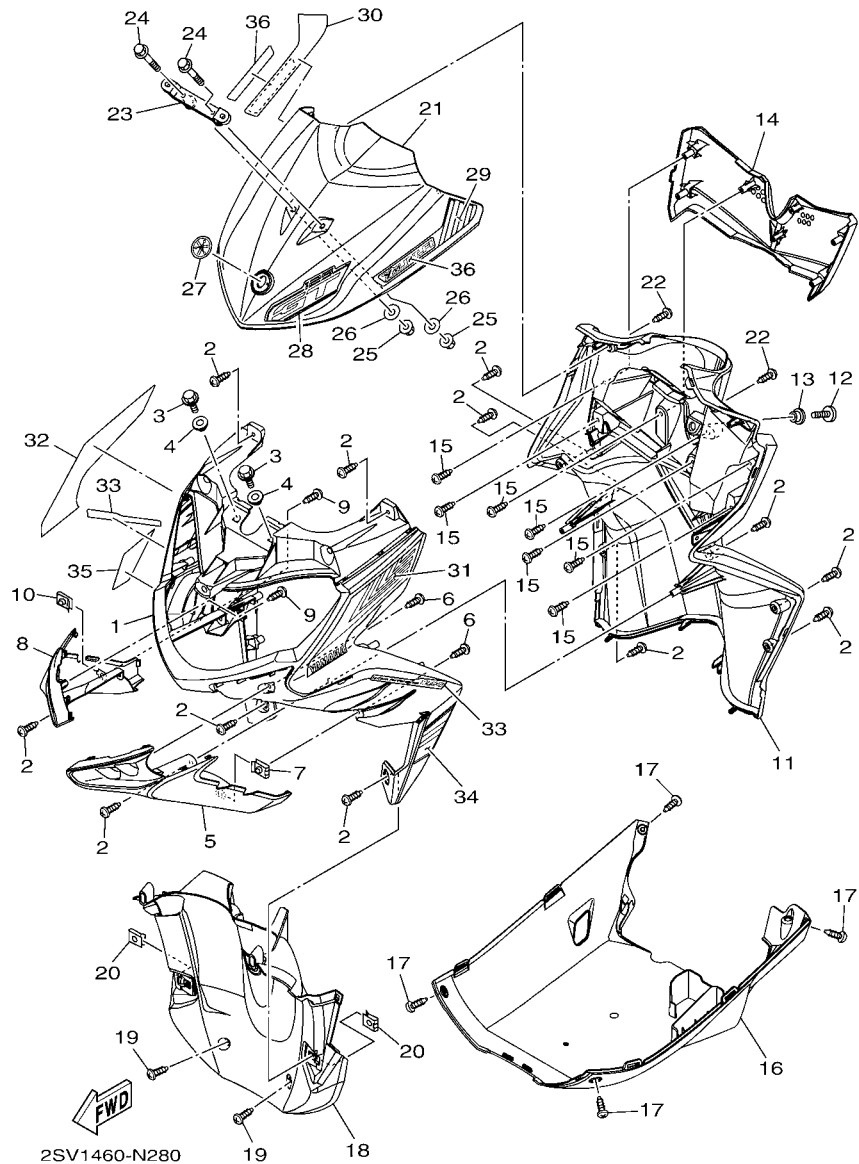


FIG. 28 LEG SHIELD

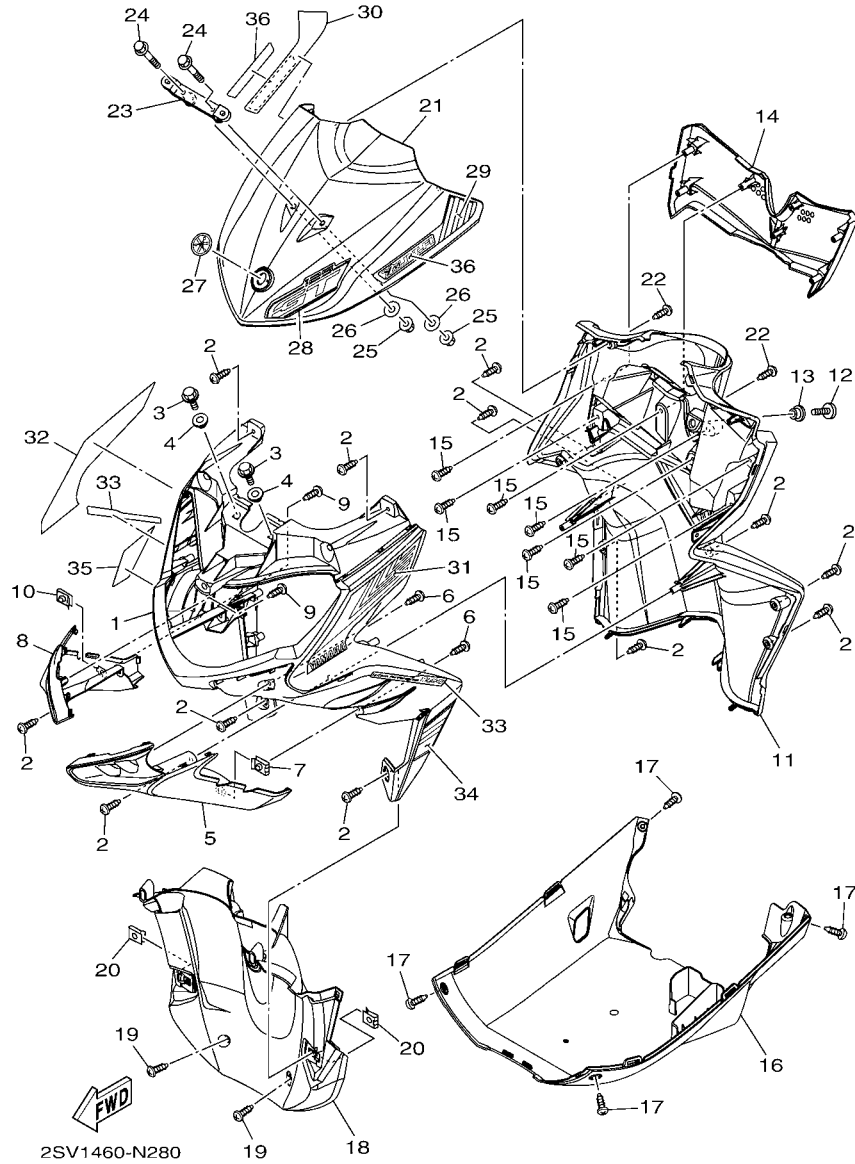
REF. NO.	PART NO.	DESCRIPTION	2SV1			REMARKS
1	2SV-F8311-00-P0	LEG SHIELD 1	1			BS4 FOR SMX,DPRME
	2SV-F8311-00-P1	LEG SHIELD 1	1			DBNM8 FOR WM6
2	97707-50014	SCREW, TRUSS HEAD TAPPING	12			
3	90119-06044	BOLT, WITH WASHER	2			
4	90387-07023	COLLAR	2			
5	2SV-F838N-00	DUCT 1	1			
6	97707-50012	SCREW, TRUSS HEAD TAPPING	2			
7	90183-05807	NUT, SPRING	2			
8	2SV-F838R-00	DUCT 2	1			
9	97707-50012	SCREW, TRUSS HEAD TAPPING	2			
10	90183-05807	NUT, SPRING	2			
11	2SV-F8312-00	LEG SHIELD 2	1			
12	90111-06839	BOLT,HEX. SOCKET BUTTON	1			
13	90387-07811	COLLAR	1			
14	1KP-F836K-00	PANEL, INNER 1	1			
15	97707-50014	SCREW, TRUSS HEAD TAPPING	7			
16	1LB-F8385-30	COVER, UNDER	1			
17	97707-50014	SCREW, TRUSS HEAD TAPPING	4			
18	2SV-F1552-00	FENDER, INNER	1			
19	97707-50014	SCREW, TRUSS HEAD TAPPING	2			
20	90183-05807	NUT, SPRING	2			
21	2SV-F3391-00-P0	PANEL, FRONT	1			UR FOR SMX
	2SV-F3391-00-P1	PANEL, FRONT	1			UR FOR WM6
	2SV-F3391-00-P2	PANEL, FRONT	1			UR FOR DPRME
22	97707-50014	SCREW, TRUSS HEAD TAPPING	2			
23	54P-H454E-00	BRACKET, NUMBER PLATE	1			
24	95802-06030	BOLT, FLANGE	2			

FIG. 28 LEG SHIELD



REF. NO.	PART NO.	DESCRIPTION	2SV1				REMARKS
25	95702-06500	NUT, FLANGE	2				
26	90201-06088	WASHER, PLATE	2				
27	31B-F313B-00	EMBLEM, 1	1				
28	2SV-F8391-00	GRAPHIC 1	1				UR FOR SMX
	2SV-F8391-10	GRAPHIC 1	1				UR FOR WM6
	2SV-F8391-20	GRAPHIC 1	1				UR FOR DPRME
29	2SV-F8393-00	GRAPHIC 3	1				UR FOR SMX
	2SV-F8393-10	GRAPHIC 3	1				UR FOR WM6
	2SV-F8393-20	GRAPHIC 3	1				UR FOR DPRME
30	2SV-F8394-00	GRAPHIC 4	1				UR FOR SMX
	2SV-F8394-10	GRAPHIC 4	1				UR FOR WM6
	2SV-F8394-20	GRAPHIC 4	1				UR FOR DPRME
31	2SV-F8398-00	GRAPHIC 5	1				UR FOR SMX
	2SV-F8398-10	GRAPHIC 5	1				UR FOR WM6
	2SV-F8398-20	GRAPHIC 5	1				UR FOR DPRME
32	2SV-F8399-00	GRAPHIC 6	1				UR FOR SMX
	2SV-F8399-10	GRAPHIC 6	1				UR FOR WM6
	2SV-F8399-20	GRAPHIC 6	1				UR FOR DPRME
33	2SV-F839A-00	GRAPHIC 7	2				UR FOR SMX
	2SV-F839A-10	GRAPHIC 7	2				UR FOR WM6
	2SV-F839A-20	GRAPHIC 7	2				UR FOR DPRME
34	2SV-F839F-00	GRAPHIC 9	1				UR FOR SMX
	2SV-F839F-10	GRAPHIC 9	1				UR FOR WM6
	2SV-F839F-20	GRAPHIC 9	1				UR FOR DPRME
35	2SV-F839G-00	GRAPHIC 10	1				UR FOR SMX
	2SV-F839G-10	GRAPHIC 10	1				UR FOR WM6
	2SV-F839G-20	GRAPHIC 10	1				UR FOR DPRME

FIG. 28 LEG SHIELD



REF. NO.	PART NO.	DESCRIPTION	2SV1				REMARKS
36	2SV-F839J-00	GRAPHIC 11	2				UR FOR SMX
	2SV-F839J-10	GRAPHIC 11	2				UR FOR WM6
	2SV-F839J-20	GRAPHIC 11	2				UR FOR DPRME

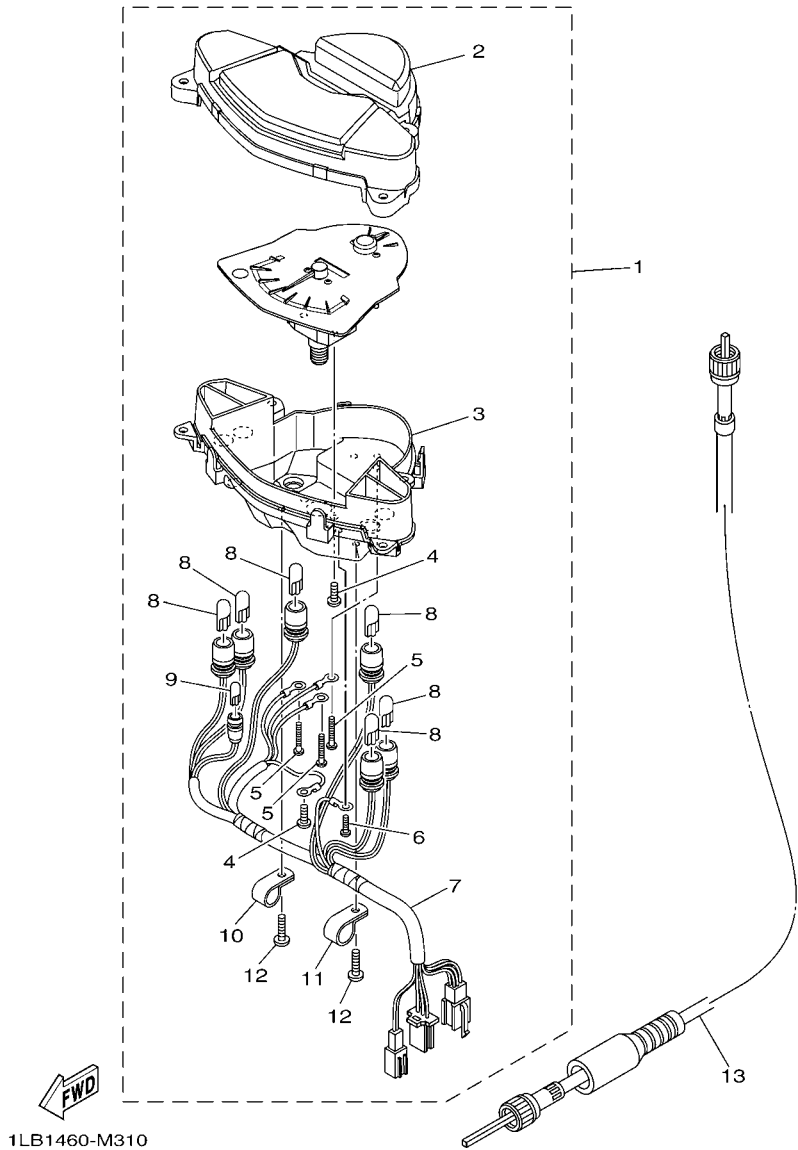


FIG. 31 METER

REF. NO.	PART NO.	DESCRIPTION	2SV1				REMARKS
1	2SV-H3510-00	SPEEDOMETER ASSY	1				
2	1LB-H3511-00	.LENS, SPEEDOMETER	1				
3	1LB-H353F-00	.CASE, METER LOWER	1				
4	90167-04021	.SCREW, TAPPING	2				
5	90159-03102	.SCREW, WITH WASHER	3				
6	97602-03110	.SCREW, PAN HEAD WITH WASHER	1				
7	1LB-H3509-00	.SOCKET CORD ASSY	1				
8	1LB-H3517-00	.BULB (12V-1.7W T10)	6				
9	2GV-83517-00	.BULB (12V-1.7W T6.5)	1				
10	5EL-8357E-00	.CLAMP	1				
11	4NK-8357E-00	.CLAMP	1				
12	97702-40014	.SCREW, TAPPING	2				
13	1LB-H3550-00	SPEEDOMETER CABLE ASSY	1				

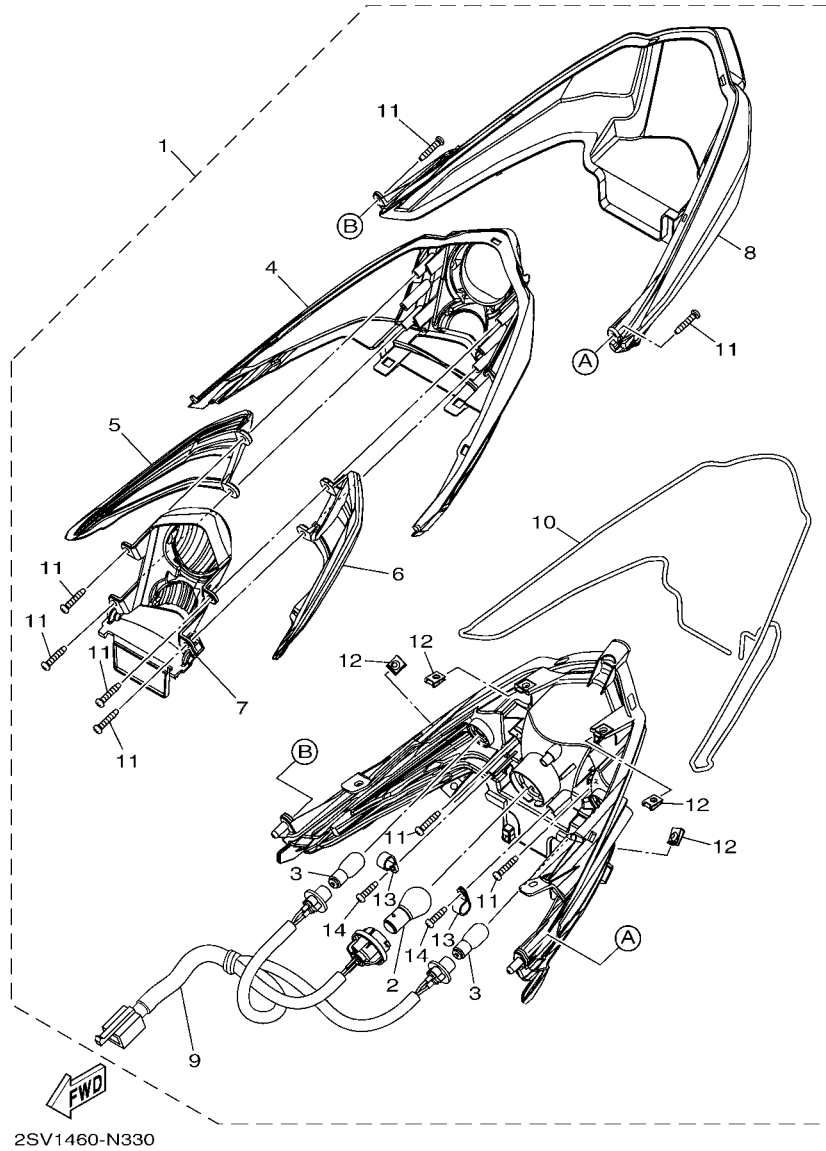
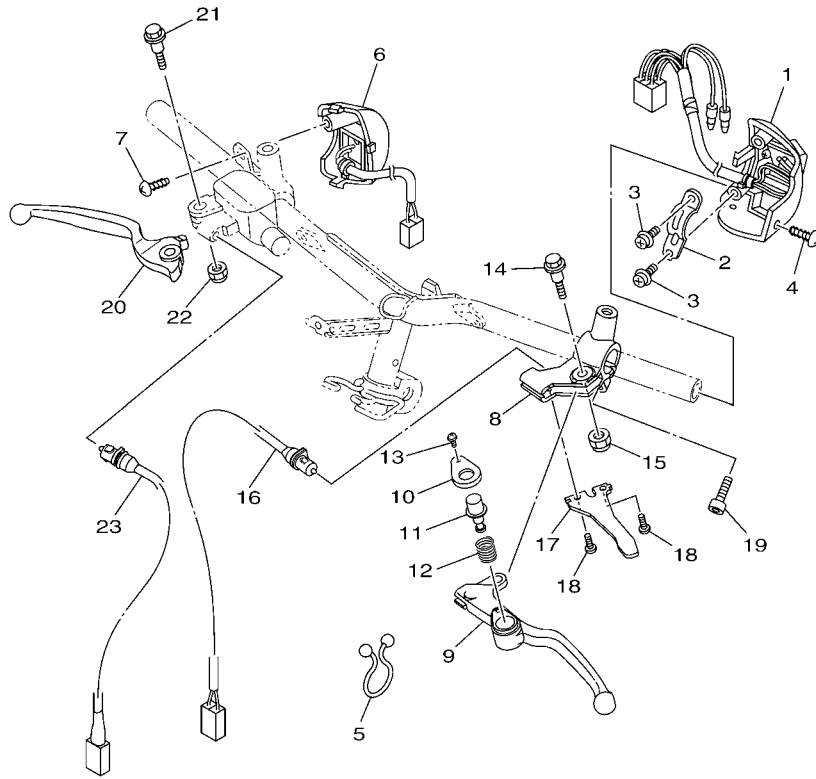


FIG. 33 TAILLIGHT

REF. NO.	PART NO.	DESCRIPTION	2SV1				REMARKS
1	2SV-H4710-00	TAILLIGHT UNIT ASSY	1				
2	4AC-H4714-00	.BULB (12V-21/5W)	1				
3	5HV-H3311-00	.BULB (12V-10W) AMBER	2				
4	2SV-H4716-00	.COVER, TAILLIGHT	1				
5	44D-H3342-10	.LENS, FLASHER 2	1				
6	44D-H3332-10	.LENS, FLASHER	1				
7	2SV-H4721-00	.LENS, TAILLIGHT	1				
8	44D-H4743-00	.LENS, LICENCE LIGHT	1				
9	44D-H4735-00	.SOCKET CORD ASSY	1				
10	44D-H4723-00	.GASKET, TAIL LENS	1				
11	97702-40616	.SCREW, TAPPING	8				
12	90183-05807	.NUT, SPRING	4				
13	44D-H454J-00	.CLAMP, CORD	2				
14	97702-40612	.SCREW, TAPPING	2				



1LB1460-M340

FIG. 34 HANDLE SWITCH & LEVER

REF. NO.	PART NO.	DESCRIPTION	2SV1				REMARKS
1	44D-H3973-00	SWITCH, HANDLE 3	1				
2	1LB-H3955-00	BRACKET 1	1				
3	97607-05216	SCREW, WITH WASHER	2				
4	97707-50014	SCREW, TRUSS HEAD TAPPING	1				
5	90464-23811	CLAMP	2				
6	44D-H3976-00	SWITCH, HANDLE 1	1				
7	97702-50020	SCREW, TAPPING	1				
8	1LB-H2911-00	HOLDER, LEVER 1	1				
9	1LB-H3912-00	LEVER 1	1				
10	1LB-H3935-00	COVER	1				
11	1LB-H3967-00	PIN, LOCK 1	1				
12	40D-H3962-00	SPRING	1				
13	40D-H396X-00	SCREW, LEVER FITTING	1				
14	90109-06798	BOLT	1				
15	95602-06100	NUT, U	1				
16	1LB-H3980-00	FRONT STOP SWITCH ASSY	1				
17	1LB-H2556-00	DAMPER, STOPPER	1				
18	98502-05010	SCREW, PAN HEAD	2				
19	91312-06020	BOLT	1				
20	5TL-H3922-00	LEVER 2	1				
21	90109-06577	BOLT	1				
22	95602-06100	NUT, U	1				
23	44D-H3980-00	FRONT STOP SWITCH ASSY	1				

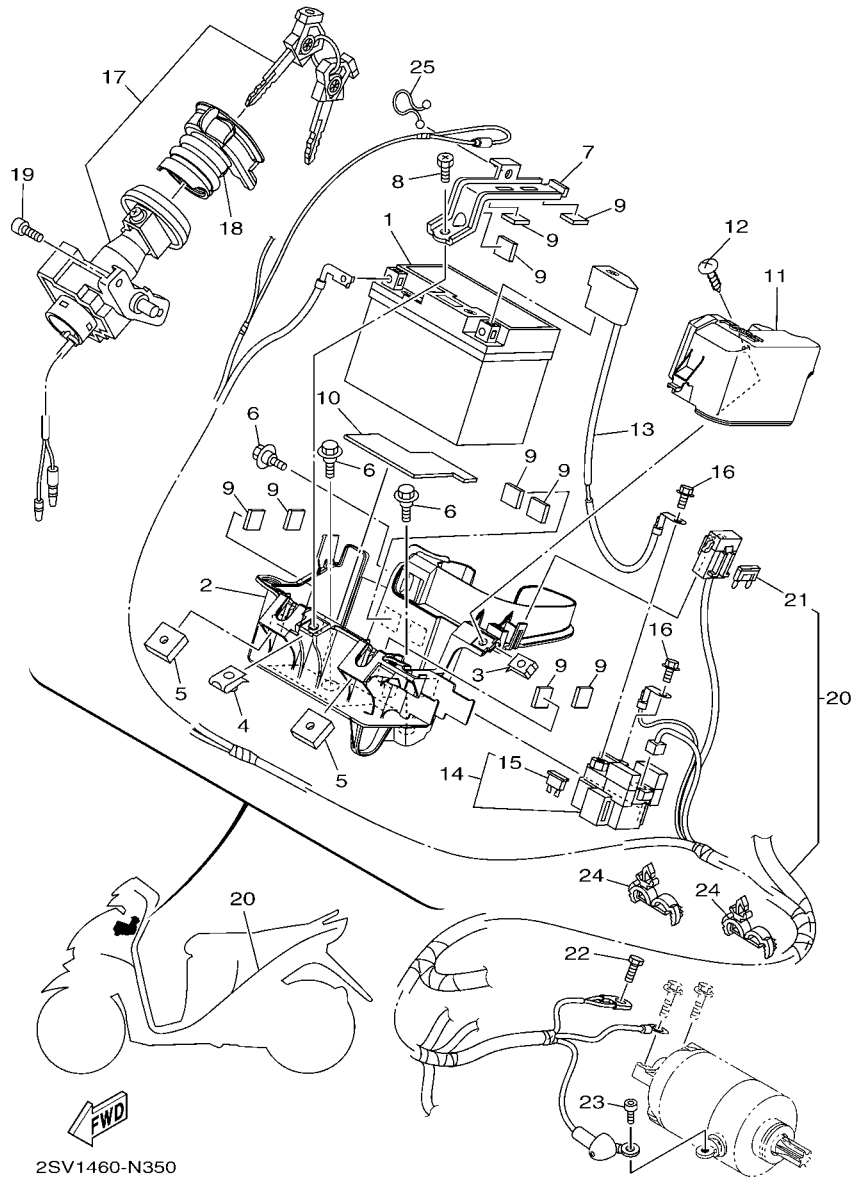


FIG. 35 ELECTRICAL 1

REF. NO.	PART NO.	DESCRIPTION	2SV1				REMARKS
1	3C1-H2100-00	BATTERY ASSY (YTZ5S MF YUASA)	1				
2	1LB-H212B-00	BOX, BATTERY 1	1				
3	90183-05807	NUT, SPRING	1				
4	90183-06821	NUT, SPRING	1				
5	90173-06806	NUT, SQUARE	2				
6	90109-06887	BOLT	3				
7	1LB-H2136-00	PLATE, BATTERY FITTING	1				
8	90153-06807	SCREW, HEXAGON	1				
9	90520-03801	DAMPER, PLATE	9				
10	44D-H2176-00	DAMPER	1				
11	2SV-H234W-00	COVER, CAP	1				
12	97707-50014	SCREW, TRUSS HEAD TAPPING	1				
13	44D-H2115-00	WIRE, PLUS LEAD	1				
14	1LB-H1940-00	STARTER RELAY ASSY	1				
15	54P-H2151-00	.FUSE (15A)	2				
16	95022-06008	BOLT, FLANGE	2				
17	1KP-H252E-01	MAIN SWITCH COMP.	1				
18	44D-H2568-00	COVER, MAIN SWITCH	1				
19	91312-06014	BOLT	2				
20	2SV-H2590-00	WIRE HARNESS ASSY	1				
21	1LB-H2151-00	.FUSE (10A)	1				
22	97002-06012	BOLT	1				
23	91312-05008	BOLT	1				
24	90464-18246	CLAMP	2				
25	90464-15804	CLAMP	1				

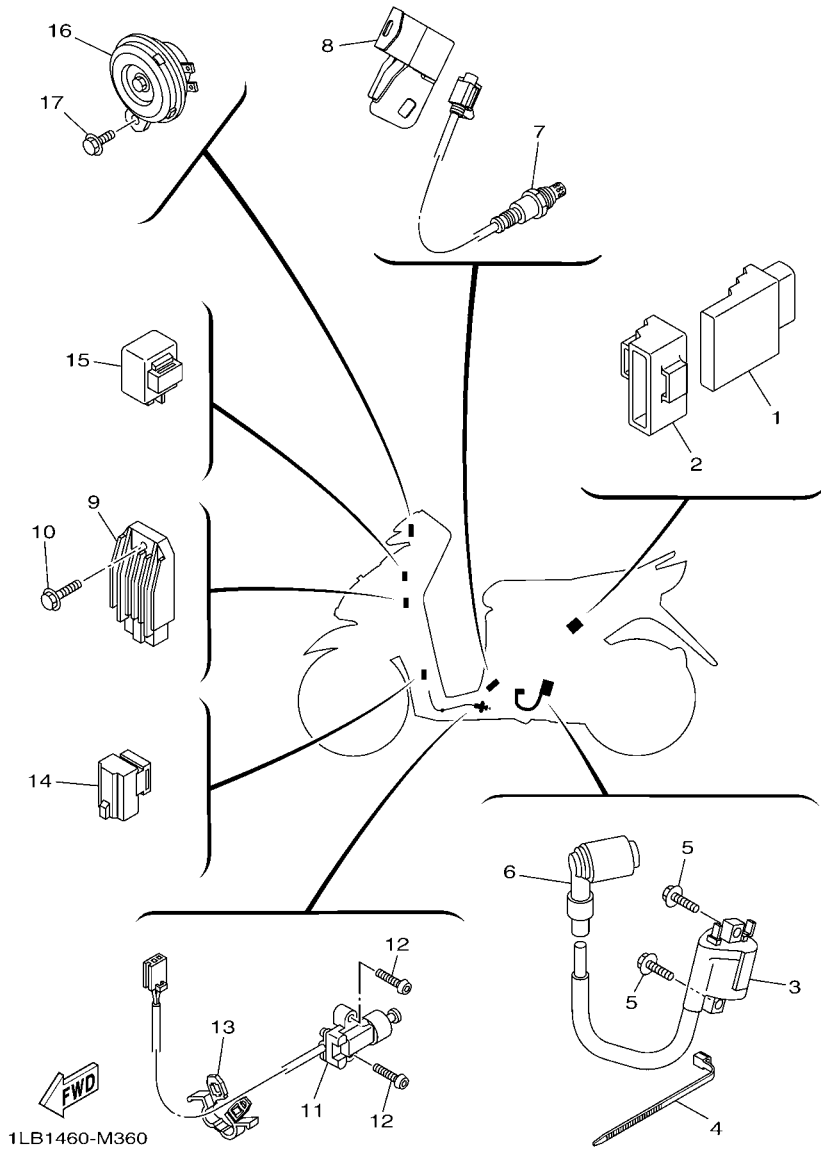


FIG. 36 ELECTRICAL 2

REF. NO.	PART NO.	DESCRIPTION	QTY	REMARKS
1	1LB-H591A-01	ENGINE CONTROL UNIT ASSY	1	
2	1LB-H5546-00	BAND	1	
3	1LB-H2310-00	IGNITION COIL ASSY	1	
4	90464-13073	CLAMP	1	
5	97022-06020	BOLT, HEXAGON	2	
6	1LB-H2370-00	PLUG CAP ASSY	1	
7	1DY-H592A-01	SENSOR, OXYGEN	1	
8	1LB-H252U-00	COVER	1	
9	54P-H1960-00	RECTIFIER & REGULATOR ASSY	1	
10	95022-06020	BOLT, FLANGE	1	
11	1LB-H2566-00	SWITCH, SIDE STAND	1	
12	90111-05810	BOLT, HEX. SOCKET BUTTON	2	
13	90464-07805	CLAMP	1	
14	3D9-81950-00	RELAY ASSY (3D9-00)	1	
15	5D9-H3350-00	FLASHER RELAY ASSY	1	
16	40D-H3371-00	HORN	1	
17	95022-06010	BOLT, FLANGE	1	

NUMERICAL INDEX

PART NO.	REF. NO.	PART NO.	REF. NO.	PART NO.	REF. NO.	PART NO.	REF. NO.	PART NO.	REF. NO.	PART NO.	REF. NO.
52S-12410-00	6 - 1	1LB-E2228-00	4 - 11	1LB-E4409-00	8 - 32	33S-E5484-00	11 - 23	44D-F1621-00	16 - 10	44D-F1871-00	17 - 24
52S-12439-00	6 - 2	1LB-E2231-00	4 - 7	1LB-E4411-00	8 - 12	44D-E5495-00	11 - 18	1LB-F1652-00	16 - 8	1S7-F1875-00	17 - 26
5LW-15659-01	11 - 6	44D-E2233-00	4 - 8	1LB-E4412-00	8 - 24	44D-E5512-00	12 - 6	44D-F1711-00-P0	17 - 5	44D-F2141-00	15 - 5
5VC-23462-00	19 - 17	33S-E2241-00	4 - 10	1LB-E4417-00	8 - 23	44D-E5521-00	12 - 7	44D-F1711-00-P1	17 - 5	1LB-F2210-20	18 - 1
36Y-2589H-00	26 - 8	44D-E2422-00	5 - 1	1LB-E4422-00	8 - 13	44D-E5524-00	12 - 1	44D-F1711-00-P6	17 - 5	5MX-F2216-00	10 - 3
3D9-81950-00	36 - 14	44D-E2439-00	5 - 4	1LB-E4425-00	8 - 33	44D-E5570-02	12 - 4	44D-F171E-00-P7	17 - 21	1LB-F3100-00	19 - 1
2GV-83517-00	31 - 9	1LB-E2446-00	5 - 12	1LB-E4426-00	8 - 49	44D-E5598-00	12 - 5	44D-F171E-00-P8	17 - 21	44D-F3108-00	25 - 19
4NK-8357E-00	31 - 11	44D-E2450-00	5 - 2	1LB-E4435-00	8 - 19	44D-E5601-00	12 - 8	44D-F1721-00-P0	17 - 11	1LB-F3110-00	19 - 8
5EL-8357E-00	31 - 10	44D-E2456-00	5 - 9	4ST-E443E-00	11 - 4	44D-E5620-00	12 - 14	44D-F1721-00-P1	17 - 11	28D-F3111-00	19 - 20
1LB-E1102-00	1 - 1	44D-E2459-00	5 - 8	5TL-E443E-00	8 - 20	44D-E5630-00	12 - 16	44D-F1721-00-P6	17 - 11	1LB-F3126-00	19 - 5
54P-E111F-00	4 - 3	1PN-E2460-00	6 - 7	5TP-E443G-00	8 - 22	5MX-E5657-00	13 - 12	1LB-F172W-00	17 - 1	1LB-F3136-00	19 - 2
1LB-E111J-00	1 - 5	1LB-E2463-00	6 - 4	1LB-E4445-00	8 - 27	5MX-E5673-00	12 - 17	2SV-F1731-00-P0	17 - 17	31B-F313B-00	28 - 27
33S-E1133-10	1 - 2	1LB-E2467-00	6 - 25	1LB-E4449-00	8 - 28	1LB-E5693-00	12 - 2	2SV-F1731-00-P1	17 - 17	1LB-F3141-00	19 - 15
1LB-E1165-00	1 - 10	44D-E2481-01	6 - 14	44D-E4449-00	8 - 18	1LB-E5744-00	13 - 26	40D-F1737-00	17 - 23	5LM-F3144-00	19 - 14
1LB-E1166-00	8 - 35	44D-E2482-01	6 - 17	1LB-E4452-00	8 - 16	44D-E6111-00	14 - 10	2SV-F173B-00	17 - 39	3AY-F3145-00	19 - 3
1LB-E1169-00	1 - 11	1LB-E2483-00	6 - 19	1LB-E4453-00	8 - 17	1LB-E6611-00	13 - 28	2SV-F173E-00	17 - 30		19 - 6
1LB-E1173-00	1 - 14	1PN-E2572-00	8 - 44	44D-E4455-00	8 - 29	1LB-E6620-00	13 - 15	2SV-F173E-10	17 - 30	2JG-F3147-00	19 - 21
1PN-E1181-00	1 - 20	33S-E2590-00	6 - 8	1LB-E4457-00	8 - 25	1LB-E6626-00	13 - 16	2SV-F173E-20	17 - 30	5HV-F3152-00	19 - 11
1LB-E1191-00	1 - 9	44D-E2611-00	6 - 27	14D-E4613-00	9 - 7	44D-E7211-00	14 - 5	2SV-F173X-00	17 - 35	31B-F3153-00	19 - 22
1LB-E1193-00	1 - 17	33S-E2615-00	6 - 9	1LB-E4711-00	9 - 1	44D-E7410-00	14 - 1	2SV-F173X-10	17 - 35	5P0-F3156-00	19 - 4
4YS-E1198-00	10 - 30	1LB-E2621-00	6 - 21	1LB-E4718-10	9 - 2	1LB-E7421-00	14 - 4	2SV-F173X-20	17 - 35		19 - 7
1LB-E1311-00	1 - 25	44D-E2659-00	6 - 29	1LB-E4799-00	9 - 3	1LB-E7465-00	13 - 19	2SV-F173Y-00	17 - 36	2JG-F3157-00	19 - 10
44D-E1351-00	1 - 26	44D-E2662-00	3 - 11	1LB-E4877-00	8 - 30	44D-E7611-00	13 - 11	2SV-F173Y-10	17 - 36	509-F3158-L0	19 - 12
1LB-E1400-00	2 - 1	44D-E2668-00	6 - 30	54P-E5113-00	10 - 26	44D-E7620-00	13 - 1	2SV-F173Y-20	17 - 36	44D-F3170-00	19 - 9
1LB-E1422-00	2 - 5	44D-E2669-00	6 - 31	40D-E5138-00	1 - 4	44D-E7623-00	13 - 5	2SV-F1741-00-P0	17 - 19	31B-F3181-00	19 - 13
54P-E1445-00	2 - 14	33S-E2843-00	6 - 10	1LB-E5150-00	10 - 1	44D-E7632-00	13 - 4	2SV-F1741-00-P1	17 - 19	1LB-F3340-00	19 - 16
1PN-E1603-00	2 - 13	44D-E3300-00	7 - 1	44D-E5191-00	11 - 7	44D-E7641-00	13 - 10	2SV-F174B-00	17 - 40	4D0-F3346-00	19 - 19
33S-E1631-03	2 - 10	44D-E3324-00	2 - 8	1LB-E5316-00	11 - 24	44D-E7645-00	13 - 8	2SV-F174G-00	17 - 31	2SV-F3391-00-P0	28 - 21
1S7-E1633-00	2 - 11	5LW-E3411-00	7 - 5	54P-E5351-00	7 - 4	1LB-E7649-00	13 - 31	2SV-F174G-10	17 - 31	2SV-F3391-00-P1	28 - 21
33S-E1651-00	2 - 4	5LW-E3452-00	2 - 6	1LB-E5357-00	8 - 2	44D-E7653-00	13 - 6	2SV-F174G-20	17 - 31	2SV-F3391-00-P2	28 - 21
33S-E1681-00	2 - 2	5LW-E3475-00	7 - 2	1LB-E5362-00	10 - 27	1LB-E7660-00	13 - 17	2SV-F174H-00	17 - 32	54P-F3411-00	19 - 25
54P-E2111-00	3 - 1	1LB-E3557-00	8 - 43	5LW-E5363-00	10 - 20	1LB-E7664-00	13 - 21	2SV-F174H-10	17 - 32	54P-F3412-00	19 - 24
54P-E2113-00	3 - 4	1PN-E3585-00	8 - 1	5LW-E5371-01	10 - 5	1LB-E7668-00	13 - 24	2SV-F174H-20	17 - 32	1LB-F3415-00	19 - 28
54P-E2117-00	3 - 6	1LB-E3750-00	8 - 5		11 - 3	1LB-E7670-00	13 - 18	2SV-F174J-00	17 - 33	3AY-F3416-00	19 - 27
5TL-E2118-00	3 - 5	54P-E3761-00	8 - 38	44D-E5373-00	10 - 6	1LB-E7683-00	13 - 22	2SV-F174J-10	17 - 33	1PA-F3418-00	19 - 31
54P-E2119-00	3 - 3	5LW-E3769-00	10 - 28	44D-E5383-00	11 - 9	1LB-E7690-00	13 - 23	2SV-F174J-20	17 - 33	5TL-F341E-10	19 - 26
1LB-E2121-00	3 - 2	1DB-E3770-00	8 - 37	44D-E5407-00	11 - 16	1LB-F1110-00	15 - 1	2SV-F174K-00	17 - 34	5BP-F3873-01	19 - 23
1DY-E2126-00	3 - 7	1LB-E3895-00	8 - 47	14D-E5408-00	10 - 7	44D-F1161-00	19 - 36	2SV-F174K-10	17 - 34	5BP-F3875-00	19 - 18
54P-E2146-00	3 - 12	1PN-E3907-01	20 - 8	1LB-E5411-00	11 - 1	44D-F117F-00	15 - 14	2SV-F174K-20	17 - 34	1LB-F4110-00	20 - 1
54P-E2151-00	3 - 8	54P-E3915-00	20 - 9	1LB-E5413-00	11 - 21	1LB-F117G-00	15 - 18	1LB-F177F-00	17 - 2	1LB-F414A-00	20 - 15
54P-E2151-10	3 - 8	1DB-E3938-00	8 - 41	44D-E5417-01	5 - 3	1LB-F1410-00	15 - 2	2SV-F179L-00	17 - 37	54P-F414G-00	20 - 10
33S-E2159-00	3 - 10	1LB-E3971-00	20 - 3	44D-E5421-00	10 - 22	44D-F1459-00	15 - 4	2SV-F179L-10	17 - 37	1LB-F419A-00	20 - 4
1LB-E2170-00	4 - 1	54P-E4137-00	8 - 42	44D-E5423-00	10 - 11	2SV-F1511-00-P0	16 - 1	2SV-F179L-20	17 - 37	1LB-F419F-00	20 - 6
1LB-E2176-00	4 - 5	54P-E4147-00	8 - 39	1LB-E5451-00	11 - 2	2SV-F1511-00-P1	16 - 1	2SV-F179M-00	17 - 38	1LB-F4425-00	20 - 11
44D-E2210-00	4 - 12	5CA-E4147-00	8 - 40	44D-E5461-00	10 - 23	2SV-F1511-00-P2	16 - 1	2SV-F179M-10	17 - 38	4YY-F4610-10	20 - 13
1DY-E2213-00	4 - 14	54P-E416A-00	8 - 9	44D-E5471-00	11 - 17	4ST-F1518-00	16 - 3	2SV-F179M-20	17 - 38	4YY-F4612-10	20 - 14
5MX-E2222-00	4 - 13	54P-E4243-00	8 - 7	44D-E5472-00	11 - 19	2SV-F1552-00	28 - 18	44D-F1816-00	17 - 27	44D-F470F-80	21 - 2
44D-E2223-00	5 - 5	54P-E4335-00	8 - 10	44D-E5473-00	11 - 22	44D-F1611-00	16 - 4	44D-F1817-00	17 - 28	5TL-F4726-00	21 - 13

NUMERICAL INDEX

PART NO.	REF. NO.	PART NO.	REF. NO.	PART NO.	REF. NO.	PART NO.	REF. NO.	PART NO.	REF. NO.	PART NO.	REF. NO.
5TL-F4727-00	21 - 12	2SV-F6231-00	25 - 10	2SV-F8398-00	28 - 31	5D9-H3350-00	36 - 15	90105-088E3	15 - 11	90183-06815	17 - 3
44D-F4730-80	21 - 1	44D-F6240-00	25 - 21	2SV-F8398-10	28 - 31	40D-H3371-00	36 - 16	90105-088E8	18 - 2	90183-06821	35 - 4
1LB-F473R-00	21 - 5	44D-F6241-00	25 - 22	2SV-F8398-20	28 - 31	1LB-H3509-00	31 - 7	90105-10283	15 - 7	90185-10011	25 - 3
3C1-F4741-00	21 - 3	54P-F6246-00	25 - 23	2SV-F8399-00	28 - 32	2SV-H3510-00	31 - 1	90105-10896	25 - 2	90185-10012	22 - 9
5BP-F4741-00	21 - 4	1LB-F6279-00	25 - 29	2SV-F8399-10	28 - 32	1LB-H3511-00	31 - 2	90109-06577	34 - 21	90185-16800	24 - 15
1LB-F4747-00	21 - 6	1LB-F6280-00	25 - 24	2SV-F8399-20	28 - 32	2P0-H3516-00	32 - 4	90109-06798	34 - 14	90201-05817	9 - 6
1S7-F4768-00	21 - 20	44D-F6281-00	25 - 39	2SV-F839A-00	28 - 33	1LB-H3517-00	31 - 8	90109-06887	16 - 2	90201-06034	1 - 24
44D-F4773-00-P1	21 - 21	44D-F6282-00	25 - 40	2SV-F839A-10	28 - 33	1LB-H353F-00	31 - 3		16 - 5	90201-06088	28 - 26
44D-F4773-00-PB	21 - 21	1LB-F6290-00	25 - 25	2SV-F839A-20	28 - 33	1LB-H3550-00	31 - 13		17 - 25	90201-10065	18 - 4
40D-F4780-01	21 - 18	1LB-F6301-00	25 - 26	2SV-F839F-00	28 - 34	2SV-H3559-00-P0	25 - 18		21 - 7	90201-10118	26 - 3
44D-F478E-01	21 - 15	1LB-F6351-00	25 - 31	2SV-F839F-10	28 - 34	1LB-H3912-00	34 - 9		35 - 6	90201-10831	22 - 10
5TL-F5168-00-1X	22 - 1	44D-F637G-00	25 - 32	2SV-F839F-20	28 - 34	5TL-H3922-00	34 - 20	90111-05810	36 - 12	90201-12688	29 - 5
3AY-F5181-01	22 - 8	1LB-F7111-00	27 - 1	2SV-F839G-00	28 - 35	1LB-H3935-00	34 - 10	90111-06807	9 - 4	90201-154E8	12 - 11
5TL-F5190-01	22 - 11	44D-F7112-00	27 - 2	2SV-F839G-10	28 - 35	1LB-H3955-00	34 - 2	90111-06839	28 - 12	90201-16810	24 - 16
1LB-F530K-00	24 - 7	44D-F7114-00	15 - 9	2SV-F839G-20	28 - 35	40D-H3962-00	34 - 12	90111-08815	23 - 2	90201-220J8	24 - 17
5LW-F5326-01	24 - 4	4YV-F7114-00	25 - 33	2SV-F839J-00	28 - 36	1LB-H3967-00	34 - 11	90116-08843	10 - 17	90202-26142	19 - 30
33S-F5338-00-1X	24 - 1		27 - 16	2SV-F839J-10	28 - 36	40D-H396X-00	34 - 13	90119-06044	16 - 6	90206-14093	24 - 13
5MX-F533A-00	24 - 12	40D-F7116-00	27 - 15	2SV-F839J-20	28 - 36	44D-H3973-00	34 - 1		27 - 10	90208-12808	13 - 13
5MX-F5351-00	24 - 10	54P-F7121-00	10 - 2	1LB-H1410-00	29 - 2	44D-H3976-00	34 - 6		28 - 3	90208-25802	14 - 9
44D-F5355-00	24 - 11	1LB-F7254-00	27 - 5	1LB-H1450-00	29 - 1	1LB-H3980-00	34 - 16	90149-10805	23 - 14	90240-08144	27 - 20
5P0-F5802-00	23 - 4	44D-F7267-01	27 - 6	5TL-H1801-00	30 - 2	44D-H3980-00	34 - 23	90153-06807	35 - 8		27 - 25
5YP-F5803-50	23 - 5	1LB-F7311-00	27 - 11	3UH-H1828-01	30 - 4	2B5-H411V-00	32 - 7	90159-03102	31 - 5	90249-12008	25 - 38
3C1-F5805-10	23 - 9	5LM-F7431-00	27 - 17	4FP-H182L-00	30 - 5	1KP-H4127-00	32 - 9	90159-06067	17 - 22	90280-03017	2 - 9
54P-F580U-01	23 - 3	5LM-F7433-00	27 - 18	5TL-H182M-00	30 - 3	1KP-H4192-00	32 - 8	90159-06801	17 - 18	90340-12808	10 - 29
5TL-F582U-30	23 - 1	44D-F7435-00	15 - 13	1LB-H1890-00	30 - 1	2SV-H4300-01	32 - 1		17 - 20	90340-12813	1 - 3
5P0-F583T-03	26 - 4	5LM-F7441-00	27 - 22	1LB-H1940-00	35 - 14	2SV-H430A-00	32 - 5	90167-04021	31 - 4	90380-15810	12 - 10
5P0-F5852-00	26 - 7	5LM-F7444-00	27 - 23	54P-H1960-00	36 - 9	1KP-H4312-00	32 - 6	90170-05803	3 - 9	90380-23800	13 - 2
5P0-F5854-00	26 - 6	5LM-F7445-00	27 - 19	3C1-H2100-00	35 - 1	5HV-H4314-00	32 - 2	90170-12800	13 - 14	90387-058M9	17 - 10
5P0-F5855-00	26 - 10		27 - 24	44D-H2115-00	35 - 13	54P-H454E-00	28 - 23	90173-06806	35 - 5		17 - 16
5TL-F5867-01	26 - 9	44D-F7481-01	27 - 7	1LB-H212B-00	35 - 2	44D-H454J-00	33 - 13	90175-06013	25 - 37	90387-068G3	21 - 10
1LB-F5872-00	26 - 1	44D-F7491-00	27 - 27	1LB-H2136-00	35 - 7	2SV-H4710-00	33 - 1	90179-08518	1 - 18	90387-07023	28 - 4
1LB-F5875-00	19 - 32	44D-F8100-00	21 - 23	1LB-H2151-00	35 - 21	4AC-H4714-00	33 - 2	90179-10803	13 - 30	90387-07811	28 - 13
1LB-F5876-00	19 - 34	2SV-F8311-00-P0	28 - 1	54P-H2151-00	35 - 15	2SV-H4716-00	33 - 4	90179-12004	29 - 6	90387-08820	27 - 13
5YP-F5917-00	23 - 6	2SV-F8311-00-P1	28 - 1	44D-H2176-00	35 - 10	2SV-H4721-00	33 - 7	90179-25810	19 - 29	90387-08821	15 - 10
5P0-F5919-00	23 - 11	2SV-F8312-00	28 - 11	1LB-H2310-00	36 - 3	44D-H4723-00	33 - 10	90183-04005	17 - 7	90387-08823	6 - 11
5YP-F5924-00	23 - 12	1KP-F836K-00	28 - 14	2SV-H234W-00	35 - 11	44D-H4735-00	33 - 9		17 - 13	90387-10837	22 - 7
5YP-F5925-01	23 - 10	1LB-F8385-30	28 - 16	1LB-H2370-00	36 - 6	44D-H4743-00	33 - 8		25 - 14	90387-16815	13 - 7
5YP-F5937-00	23 - 7	2SV-F838N-00	28 - 5	1KP-H252E-01	35 - 17	1LB-H5546-00	36 - 2	90183-05807	17 - 6	90388-10800	15 - 3
5YP-F5939-00	23 - 13	2SV-F838R-00	28 - 8	1LB-H252U-00	36 - 8	54P-H5801-00	8 - 8		17 - 12	90388-10808	10 - 4
1LB-F6110-01	25 - 1	2SV-F8391-00	28 - 28	1LB-H2556-00	34 - 17	1LB-H591A-01	36 - 1		21 - 11	90401-10812	26 - 2
2SV-F6143-00-P0	25 - 4	2SV-F8391-10	28 - 28	1LB-H2566-00	36 - 11	1DY-H592A-01	36 - 7		25 - 5	90430-06014	1 - 7
2SV-F6143-00-P1	25 - 4	2SV-F8391-20	28 - 28	44D-H2568-00	35 - 18	5P0-W0041-00	26 - 5		25 - 8		1 - 28
2SV-F6143-00-P2	25 - 4	2SV-F8393-00	28 - 29	2SV-H2590-00	35 - 20	4C9-W0048-00	23 - 8		27 - 9	90430-08119	10 - 19
1LB-F6145-00	25 - 7	2SV-F8393-10	28 - 29	1LB-H2911-00	34 - 8	1LB-WE445-00	8 - 15		28 - 7	90450-27803	6 - 15
4US-F6199-00	25 - 15	2SV-F8393-20	28 - 29	5HV-H3311-00	32 - 3	90101-06046	24 - 14		28 - 10	90450-46803	8 - 11
2SV-F61AA-00-P0	25 - 16	2SV-F8394-00	28 - 30		33 - 3	90101-08847	27 - 12		28 - 20	90464-07805	36 - 13
2SV-F61AA-00-P1	25 - 16	2SV-F8394-10	28 - 30	44D-H3332-10	33 - 6	90105-06894	5 - 7		33 - 12	90464-13073	6 - 6
2SV-F6216-00	25 - 13	2SV-F8394-20	28 - 30	44D-H3342-10	33 - 5	90105-088E1	4 - 4		35 - 3		36 - 4

NUMERICAL INDEX

PART NO.	REF. NO.	PART NO.	REF. NO.	PART NO.	REF. NO.	PART NO.	REF. NO.	PART NO.	REF. NO.	PART NO.	REF. NO.
90464-15804	35 - 25	91810-14809	1 - 21	93603-17800	5 - 10	95702-06500	21 - 14	97707-50014	34 - 4		
90464-18246	35 - 24		1 - 22	94107-14811	22 - 5		28 - 25		35 - 12		
90464-23811	34 - 5		5 - 19	94109-14807	24 - 2	95702-08500	9 - 8	98502-05010	21 - 16		
90464-36800	29 - 7		10 - 8	94207-14802	22 - 6	95702-10500	24 - 5		34 - 18		
90465-13152	15 - 15		10 - 14	94209-14800	24 - 3	95802-06014	20 - 2	98502-05025	25 - 41		
90467-08003	17 - 29		10 - 24	94568-F9090	4 - 6	95802-06030	28 - 24	98502-06012	8 - 6		
90467-090A3	6 - 5		11 - 11	94700-00891	1 - 19	95812-06025	6 - 22	98502-06016	29 - 4		
90467-11106	11 - 5	92012-06012	11 - 10	95022-06008	35 - 16	95812-06030	8 - 46	98507-05020	7 - 3		
90467-11825	8 - 36	92017-05016	25 - 27	95022-06010	1 - 6	95812-06035	1 - 13	99001-08600	27 - 3		
90467-12808	8 - 21	92902-05200	8 - 26		1 - 27		8 - 34	99002-07600	5 - 11		
90467-15802	8 - 48	93101-23801	13 - 3		11 - 8	95812-08016	10 - 18	99009-15400	12 - 12		
90467-18806	8 - 31	93102-15801	12 - 13		19 - 33	95812-08045	9 - 9	99009-25400	14 - 8		
90467-22801	6 - 16	93102-17812	14 - 13		19 - 35	95817-06020	11 - 20				
	6 - 18	93102-19800	5 - 15		19 - 37	95822-06016	6 - 28				
	6 - 20	93102-25815	10 - 12		21 - 19		21 - 22				
90480-10332	9 - 5	93102-32801	14 - 7		36 - 17	95822-06020	21 - 8				
90480-14823	21 - 9	93106-20816	22 - 3	95022-06012	21 - 17	95827-06030	6 - 13				
90480-15803	6 - 12	93210-07802	24 - 6		25 - 30	95827-06090	11 - 14				
90501-16004	7 - 6	93210-09806	1 - 16	95022-06014	1 - 12	97002-06012	35 - 22				
90501-16801	25 - 36	93210-14816	10 - 21		5 - 14	97022-06020	36 - 5				
90506-12001	24 - 8	93210-16803	5 - 13		25 - 34	97512-06525	30 - 6				
90506-15001	24 - 9	93210-16805	13 - 9	95022-06020	4 - 15	97602-03110	31 - 6				
90506-35816	27 - 4	93210-17802	8 - 45		5 - 18	97602-05320	8 - 14				
90508-32768	12 - 9	93210-28803	13 - 32		6 - 3	97607-05216	34 - 3				
90520-03801	35 - 9	93210-29800	7 - 7		8 - 4	97702-40014	31 - 12				
90520-03822	27 - 8	93210-30611	8 - 3		36 - 10	97702-40612	33 - 14				
90520-08800	15 - 16	93210-42802	13 - 20	95022-06025	6 - 23	97702-40616	33 - 11				
90520-08803	15 - 17	93211-31800	5 - 16		10 - 15	97702-50020	25 - 20				
90520-10803	6 - 32	93211-44801	10 - 13	95022-06030	25 - 35		34 - 7				
90520-10804	6 - 33	93306-002YE	4 - 2	95022-06035	6 - 24	97707-40008	25 - 11				
90520-12001	32 - 10	93306-082Y2	13 - 29		10 - 16	97707-50012	17 - 9				
90520-20803	16 - 9	93306-082Y5	13 - 29		10 - 25		17 - 15				
90560-10292	22 - 2	93306-252XB	14 - 11	95022-06060	5 - 20		28 - 6				
91312-05008	25 - 28	93306-272X2	14 - 6		10 - 9		28 - 9				
	35 - 23	93306-300YK	22 - 4	95022-06070	5 - 17	97707-50014	16 - 7				
91312-05010	20 - 12	93306-301XT	14 - 2		10 - 10		17 - 4				
91312-05014	20 - 5	93306-301YS	14 - 3	95027-06020	6 - 26		17 - 8				
	20 - 7	93306-302YF	14 - 2	95027-06035	11 - 12		17 - 14				
91312-06012	4 - 9	93306-303YE	14 - 12	95027-06045	11 - 13		25 - 6				
91312-06014	35 - 19	93306-303YJ	14 - 12	95027-06080	11 - 15		25 - 9				
91312-06020	29 - 3	93306-372X0	2 - 7	95302-10600	18 - 3		25 - 12				
	34 - 19	93306-372Y4	2 - 7	95602-06100	34 - 15		25 - 17				
91312-06025	26 - 11	93306-901Y6	13 - 25		34 - 22		28 - 2				
91312-06095	1 - 23	93310-628X8	2 - 3	95602-08200	15 - 12		28 - 15				
91317-06025	12 - 15	93317-417Y2	13 - 27		27 - 14		28 - 17				
91401-25015	27 - 21	93450-16115	2 - 12	95602-10200	15 - 6		28 - 19				
	27 - 26	93450-32837	12 - 3		15 - 8		28 - 22				
91809-14804	1 - 15	93603-10800	5 - 6	95612-08618	1 - 8		32 - 11				