



PARTS CATALOGUE

FZN150 (2UP1) INDONESIA



1P2UP-460E1

()

FZN150
PARTS CATALOGUE
©2015 by Yamaha Motor Co., Ltd.
1st edition, May 2015
All rights reserved.
Any reprinting or unauthorized use
without the written permission of
Yamaha Motor Co., Ltd.
is expressly prohibited.
Printed in Japan.

FOREWORD

This Parts Catalogue is related to the parts for the model(s) on the cover page. When you are ordering replacement parts, please refer to this Parts Catalogue and quote both part numbers and part names correctly.

1. Modifications or additions which have been made after the issue of the Parts Catalogue will be announced in the Parts News.

It is advisable that you make the necessary corrections to the Parts Catalogue according to the Parts News.

2. Abbreviations

The following abbreviations are used in this Parts Catalogue.

“UR” Use specified parts number.

“UN” Use as many as needed.

“AP” Alternate Parts

“LM” Locally Made (Parts need to be ordered locally)

“F#” Frame No. (Applicable machine No.)

“O/S” Over Size

3. The number of components for assembly

- Parts, which are to be supplied in an assembly, are listed with a dot (.) in front of the part name as shown below.
- The numeral appearing to the right of each component part indicates the quantity of parts for each assembly unit.

PART NO.	DESCRIPTION	Q'TY	REMARKS
2F5-83310-60	FRONT FLASHER LIGHT ASSY	2	
115-83311-60	.BULB (6V-18W)	1	

4. Applicable colours of graphics are represented in the “REMARKS” as shown below.

PART NO.	DESCRIPTION	Q'TY	REMARKS
2N4-24110-00-X5	FUEL TANK COMP.	2	MXR
3J1-24240-10	.GRAPHIC, FUEL TANK	1	FOR MXR

5. Note that the illustrations for reference in finding parts numbers are not to be used for assembling. When assembling, please use the applicable service manual.

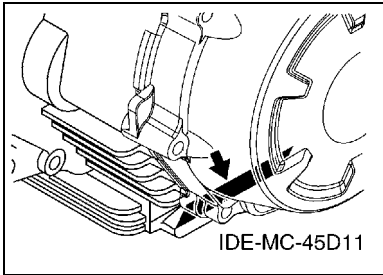
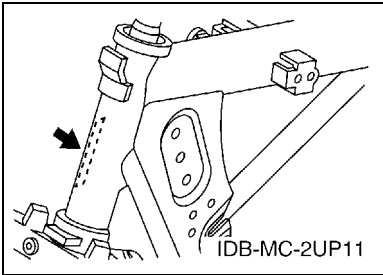
6. The asterisk (*) before a reference number indicates modified items after the first edition.

FOREWORD

7. Applicable Serial No.

Frame Serial No.

Engine Serial No.



8. Applicable Colour Code (The (*) mark shows Model colour.)

Abbreviation	Colour Name	Colour Code
DBNM8(*)	DARK BLUISH GRAY METALLIC 8	0919
DBNM9(*)	DARK BLUISH GRAY METALLIC 9	1240
LGB	LOW GLOSS BLACK	0098
MBL2	MAT BLACK 2	0582
S8	SILVER 8	0895
SMX	BLACK METALLIC X	0903
VYRM3(*)	VIVID YELLOWISH RED METALLIC 3	1157
YB	YAMAHA BLACK	0033

9. Applicable Starting Serial No.

Frame Serial No.

Serial No.	Name Of Q'ty Column	Model Code

Engine Serial No.

Serial No.	Name Of Q'ty Column	Model Code

CONTENTS

ENGINE

CYLINDER HEAD	1
CRANKSHAFT & PISTON	2
VALVE	4
CAMSHAFT & CHAIN	5
OIL PUMP	6
INTAKE	7
EXHAUST	9
CRANKCASE	10
CRANKCASE COVER 1	11
STARTER CLUTCH	12
STARTER	13
CLUTCH	14
TRANSMISSION	15
SHIFT CAM & FORK	17
SHIFT SHAFT	18

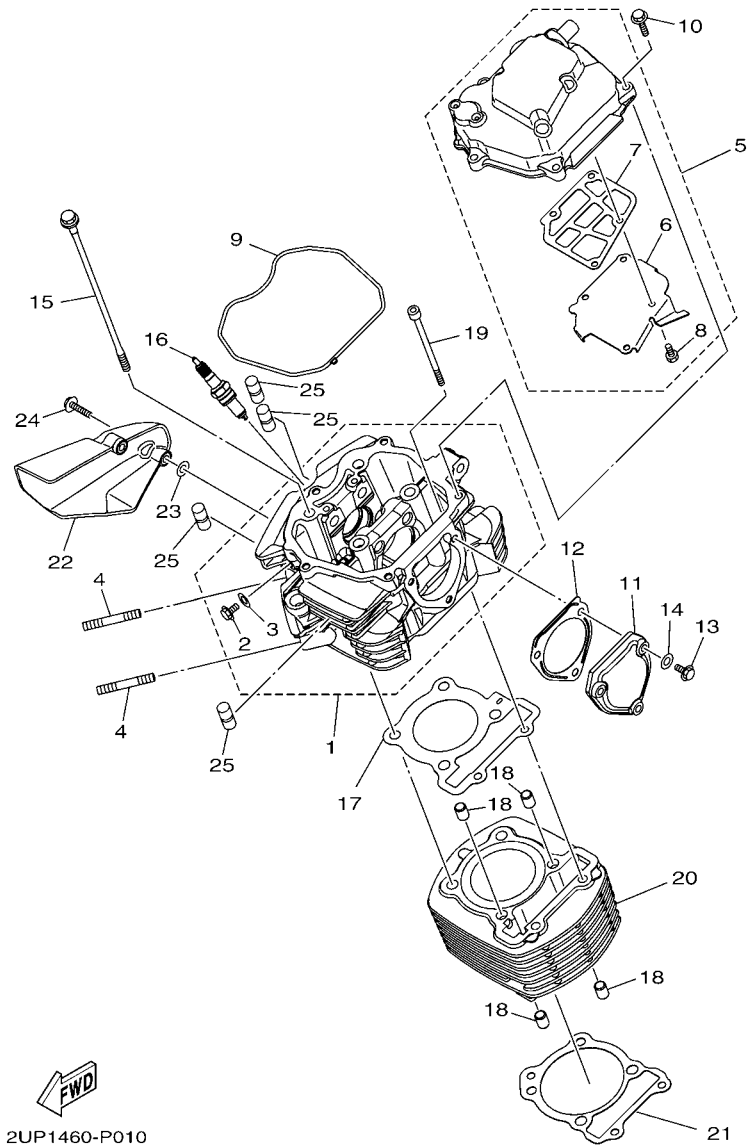
CHASSIS

FRAME	19
FENDER	20
SIDE COVER	21
REAR ARM & SUSPENSION	23
STEERING	24
FRONT FORK	25
FUEL TANK	27
FUEL TANK 2	29
SEAT	31
FRONT WHEEL	32
FRONT BRAKE CALIPER	33
REAR WHEEL	34
STEERING HANDLE & CABLE	36
FRONT MASTER CYLINDER	37
STAND & FOOTREST	38
STAND & FOOTREST 2	40
GENERATOR	41
STARTING MOTOR	42
FLASHER LIGHT	43
METER	45
HEADLIGHT	46
TAILLIGHT	47
HANDLE SWITCH & LEVER	48
ELECTRICAL 1	49

ELECTRICAL 2	50
--------------------	----

INDEX

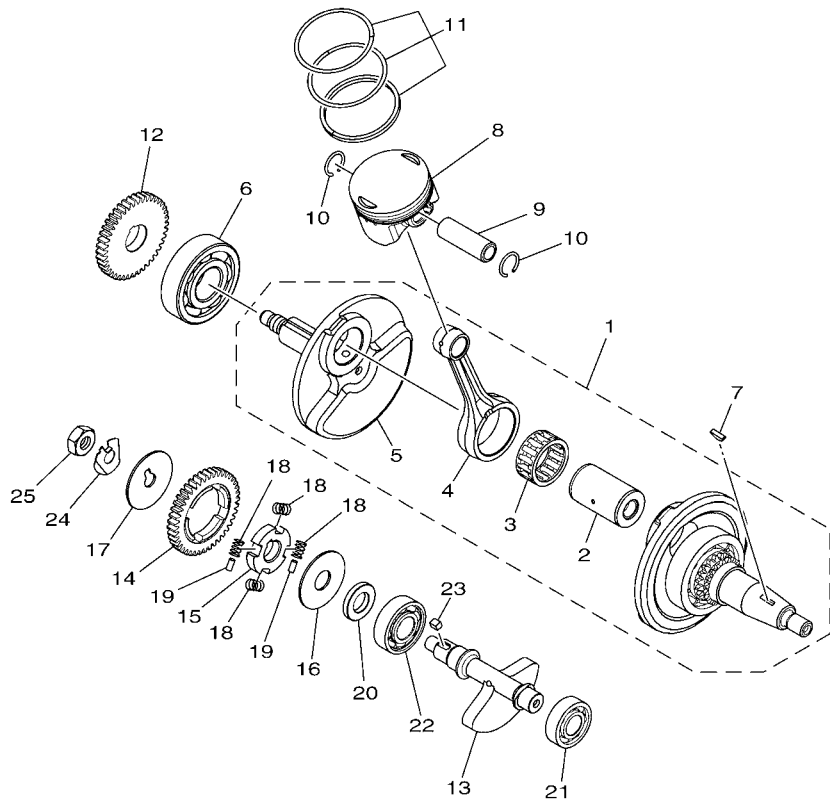
NUMERICAL INDEX	51
-----------------------	----



2UP1460-P010

FIG. 1 CYLINDER HEAD

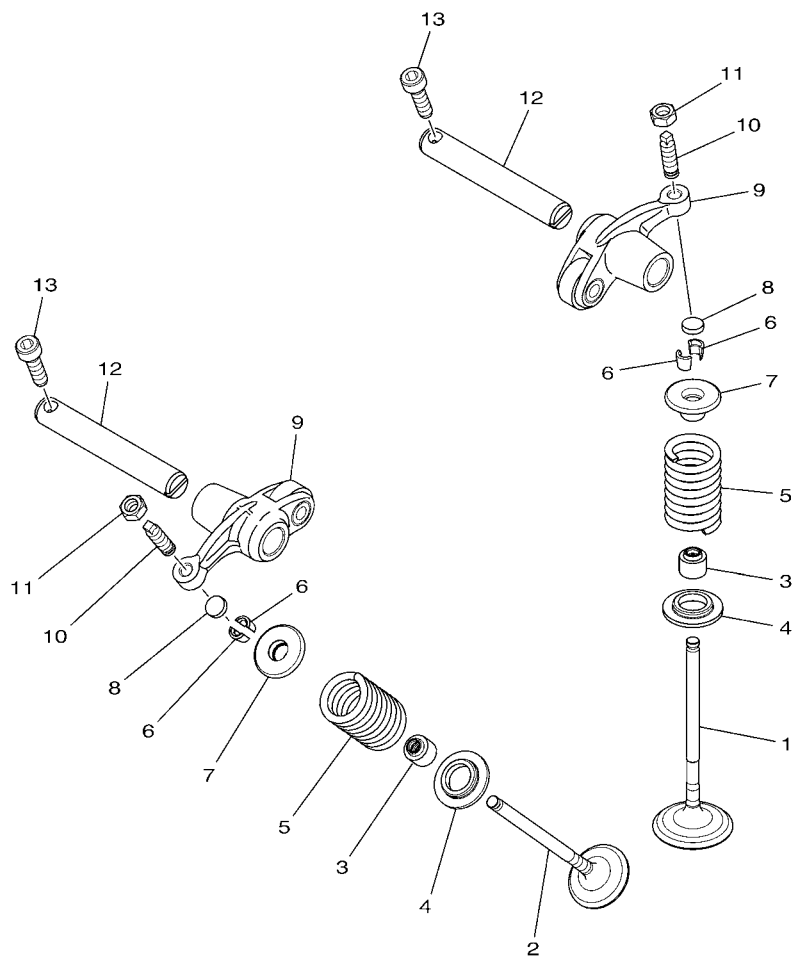
REF. NO.	PART NO.	DESCRIPTION	ZUP1				REMARKS
1	2UP-E1102-00	CYLINDER HEAD ASSY	1				
2	95022-06012	.BOLT, FLANGE	1				
3	90430-06014	.GASKET	1				
4	95612-08635	BOLT, STUD	2				
5	2UP-E1190-00	COVER, CYLINDER HEAD 1	1				
6	2UP-E1165-00	.PLATE, BREATHER	1				
7	45P-E1169-10	.GASKET, BREATHER COVER	1				
8	91317-05010	.BOLT	4				
9	2GS-E1193-00	GASKET, HEAD COVER 1	1				
10	95022-06025	BOLT, FLANGE	5				
11	2UP-E1186-00	COVER, CYLINDER HEAD SIDE 2	1				
12	45P-E2435-10	GASKET	1				
13	95022-06025	BOLT, FLANGE	3				
14	90430-06014	GASKET	3				
15	2GS-E1361-00	BOLT, CYLINDER HOLDING 1	4				
16	94700-00867	PLUG, SPARK (NGK CPR8EA9)	1				
17	2UP-E1181-00	GASKET, CYLINDER HEAD 1	1				
18	91810-14809	PIN, DOWEL	4				
19	90110-06304	BOLT, HEXAGON SOCKET HEAD	2				
20	2UP-E1310-00	CYLINDER	1				
21	45P-E1351-00	GASKET, CYLINDER	1				
22	21C-E2661-10	DUCT	1				
23	90201-05820	WASHER, PLATE	2				
24	90110-06256	BOLT, HEXAGON SOCKET HEAD	2				
25	45P-E1161-20	ABSORBER 1	4				



2UP1460-P020

FIG. 2 CRANKSHAFT & PISTON

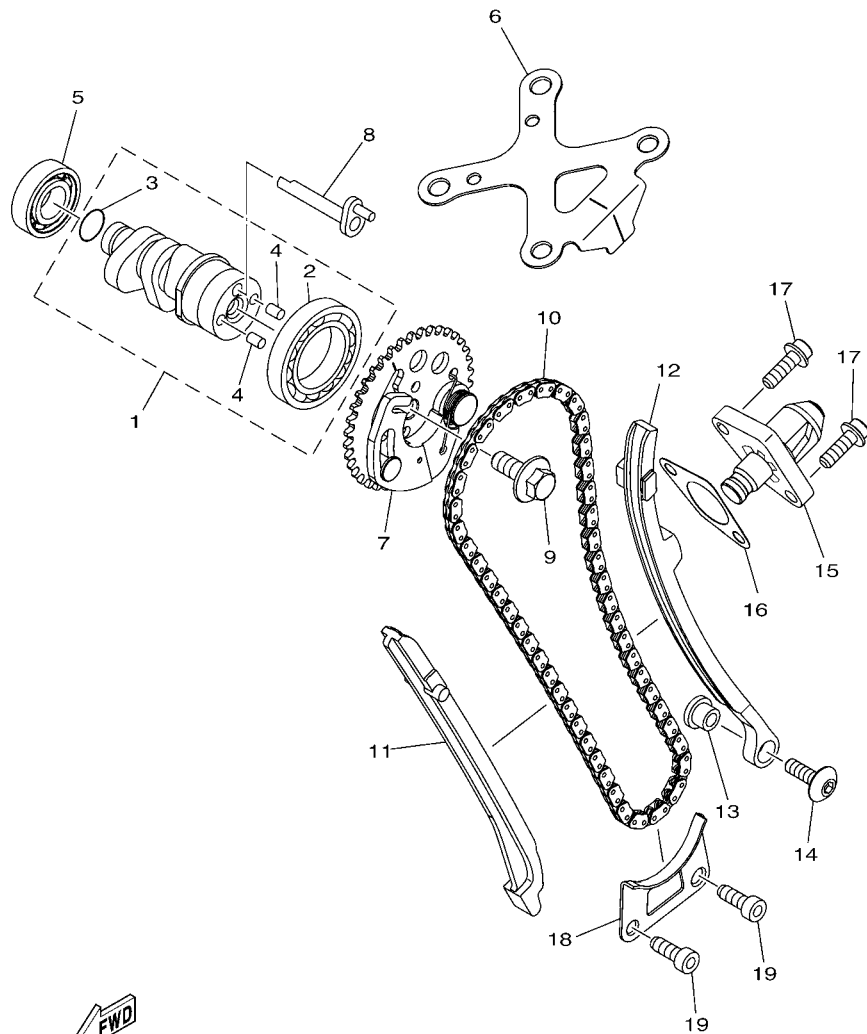
REF. NO.	PART NO.	DESCRIPTION	ZUP1				REMARKS
1	2UP-WE140-00	CRANKSHAFT ASSY	1				
2	45P-E1681-00	.PIN, CRANK 1	1				
3	93310-628X0	.BEARING	1				
4	1ST-E1651-00	.ROD, CONNECTING	1				
5	2UP-E1422-00	.CRANK 2	1				
6	93306-305XB	BEARING	1				
7	90280-03017	KEY, WOODRUFF	1				
8	2UP-E1631-00	PISTON (STD)	1				
	2UP-E1636-09	PISTON (0.50MM O/S)	1				AP
	2UP-E1638-09	PISTON (1.00MM O/S)	1				AP
9	45P-E1633-10	PIN, PISTON	1				
10	93450-16068	CIRCLIP	2				
11	1ST-E1603-00	PISTON RING SET (STD)	1				
	1ST-E1605-00	PISTON RING SET (0.50MM O/S)	1				AP
	1ST-E1607-00	PISTON RING SET (1.00MM O/S)	1				AP
12	45P-E1536-10	GEAR, DRIVE	1				
13	2UP-E1454-00	WEIGHT 1	1				
14	3C1-E1531-10	GEAR, BALANCE WEIGHT	1				
15	45P-E1496-00	BOSS, BUFFER	1				
16	90201-15821	WASHER, PLATE	1				
17	90214-10800	WASHER, CLAW	1				
18	90501-16800	SPRING, COMPRESSION	4				
19	93604-08800	PIN, DOWEL	2				
20	90387-155J0	COLLAR	1				
21	93306-252XP	BEARING	1				
22	93306-253X1	BEARING	1				
23	90282-05031	KEY, STRAIGHT	1				




2GS1470-P030

FIG. 3 VALVE

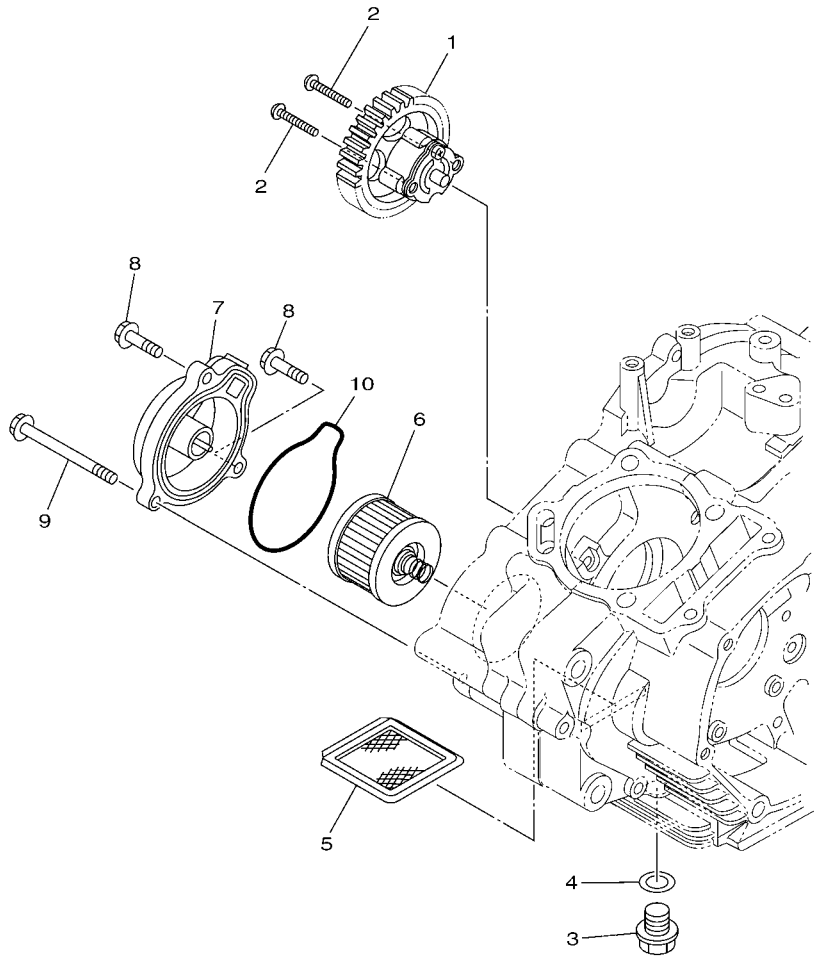
REF. NO.	PART NO.	DESCRIPTION	2UP1				REMARKS
1	2UP-E2111-00	VALVE, INTAKE	1				
2	2UP-E2121-00	VALVE, EXHAUST	1				
3	1PA-E2119-00	SEAL, VALVE STEM	2				
4	2MS-E2126-00	SEAT, VALVE SPRING 2	2				
5	2GS-E2113-00	SPRING, VALVE INNER	2				
6	3S0-E2118-00	LOCK, VALVE SPRING RETAINER	4				
7	2UP-E2117-00	RETAINER, VALVE SPRING	2				
8	52S-E2169-10	PAD, ADJUSTING	2				
9	1ST-E2151-00	ARM, VALVE ROCKER	2				
10	2GS-12159-00	SCREW, VALVE ADJUSTING	2				
11	90170-05302	NUT	2				
12	45P-E2156-00	SHAFT, ROCKER 2	2				
13	91312-05016	BOLT	2				



2UP1460-P040

FIG. 4 CAMSHAFT & CHAIN

REF. NO.	PART NO.	DESCRIPTION	ZUP1				REMARKS
1	2UP-E2170-00	CAMSHAFT ASSY 1	1				
2	93306-906Y4	.BEARING	1				
3	93210-12801	.O-RING	1				
4	93605-06800	.PIN, DOWEL	2				
5	93306-002YW	BEARING	1				
6	2GS-E111F-00	PLATE	1				
7	2GS-E2280-00	DECOMPRESSION ASSY	1				
8	2UP-E2288-00	CAM, DECOMPRESSION	1				
9	90105-08196	BOLT, FLANGE	1				
10	94568-G7096	CHAIN	1				
11	45P-E2231-00	GUIDE, STOPPER 1	1				
12	2GS-E2241-00	GUIDE, STOPPER 2	1				
13	4LS-E5598-00	COLLAR	1				
14	90149-06829	SCREW	1				
15	45P-E2210-01	TENSIONER ASSY, CAM CHAIN	1				
16	5MX-E2213-01	GASKET, TENSIONER CASE	1				
17	90110-06393	BOLT, HEXAGON SOCKET HEAD	2				
18	45P-E2437-00	STOPPER	1				
19	91312-06016	BOLT	2				



1PM1470-L050

FIG. 5 OIL PUMP

REF. NO.	PART NO.	DESCRIPTION	ZUP1				REMARKS
1	54B-E3300-00	OIL PUMP ASSY	1				
2	90111-05808	BOLT,HEX. SOCKET BUTTON	2				
3	90340-12097	PLUG, STRAIGHT SCREW	1				
4	90430-12227	GASKET	1				
5	45P-E3411-00	STRAINER, OIL	1				
6	21C-E3440-00	ELEMENT ASSY, OIL CLEANER	1				
7	45P-E3447-00	COVER, OIL ELEMENT	1				
8	95027-06020	BOLT, FLANGE	2				
9	95027-06065	BOLT, FLANGE	1				
10	45P-E3449-00	GASKET, ELEMENT COVER	1				

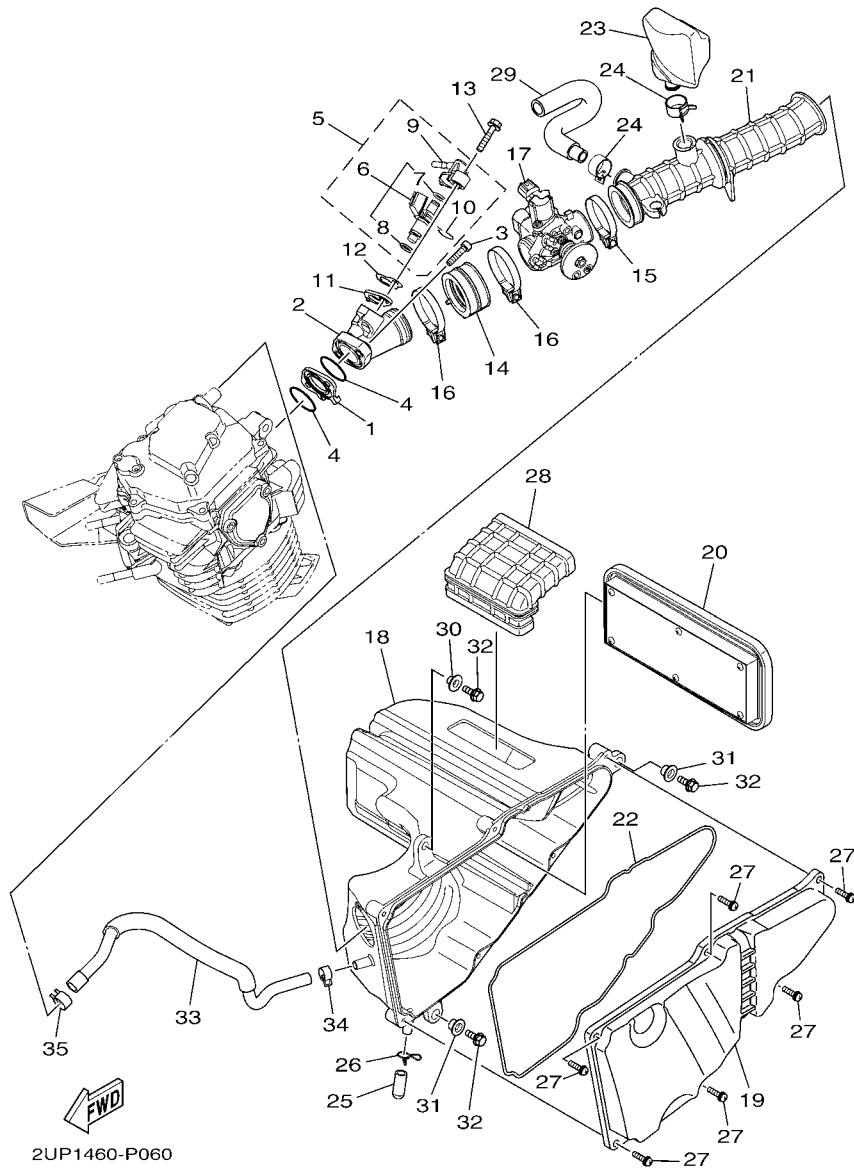
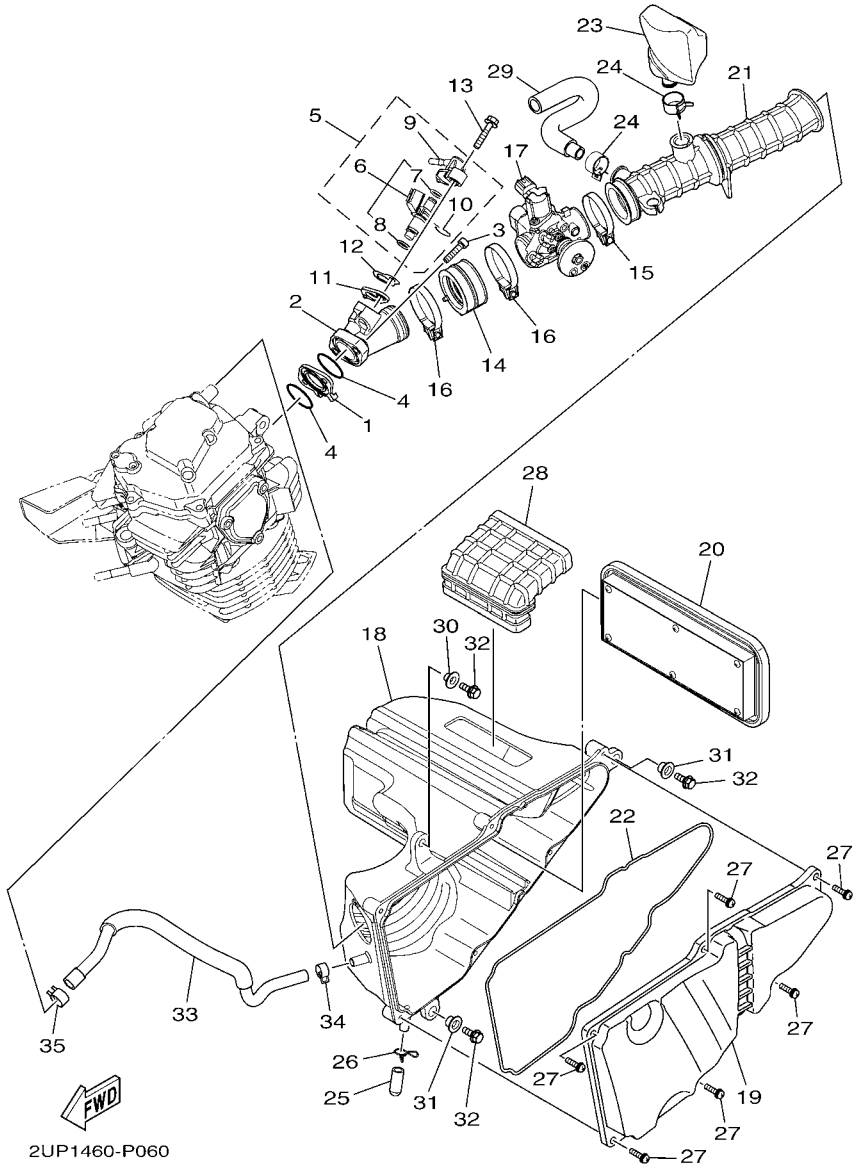


FIG. 6 INTAKE

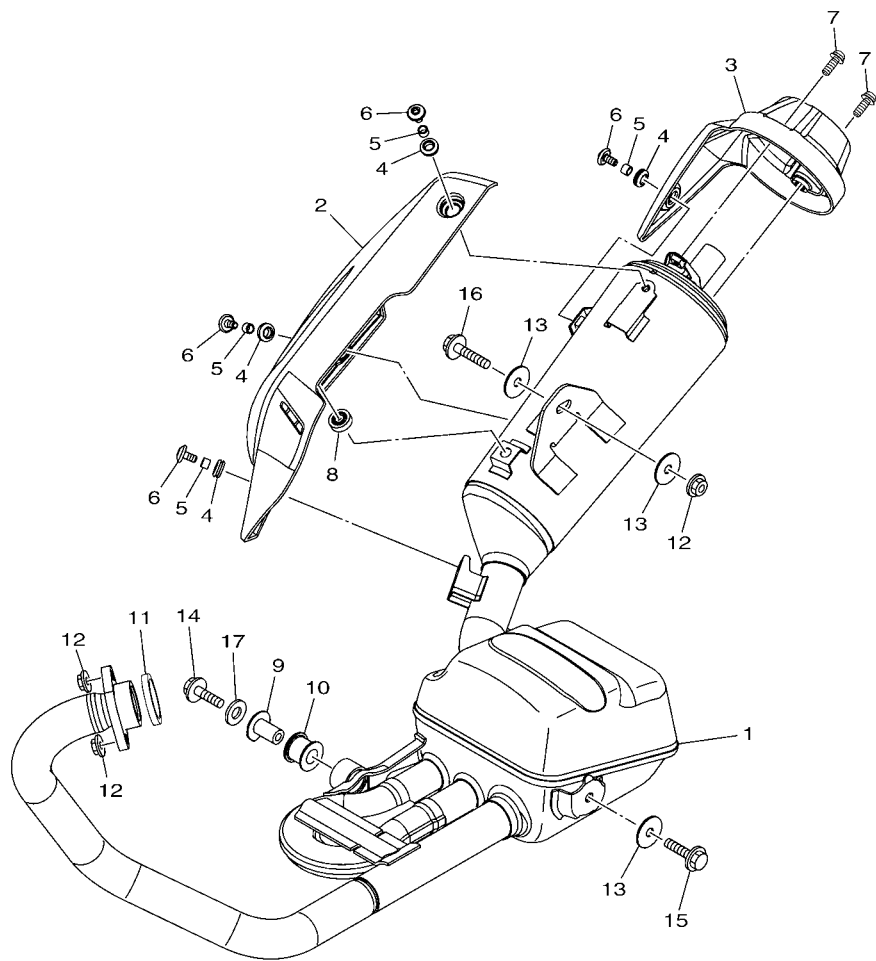
REF. NO.	PART NO.	DESCRIPTION	2UP1				REMARKS
1	45P-E3595-00	JOINT	1				
2	2UP-E3585-00	MANIFOLD	1				
3	91312-06025	BOLT	2				
4	93210-30611	O-RING	2				
5	2GS-E3770-00	INJECTOR ASSY	1				
6	2GS-E3761-00	.INJECTOR	1				
7	54P-E4147-00	..O-RING	1				
8	5CA-E4147-00	..O-RING	1				
9	54P-E3938-00	.PIPE	1				
10	54P-E4137-00	.CLIP	1				
11	1PA-E3556-00	GASKET, MANIFOLD	1				
12	1LB-E3557-00	GASKET	1				
13	95812-06030	BOLT, FLANGE	1				
14	2UP-E3635-00	JOINT, INTAKE 1	1				
15	54P-E3474-00	BAND	1				
16	90450-48803	HOSE CLAMP ASSY	2				
17	2UP-E3750-00	THROTTLE BODY ASSY	1				
18	2UP-E4411-00	CASE, AIR CLEANER 1	1				
19	2UP-E4412-00	CAP, CLEANER CASE 1	1				
20	2UP-E4450-00	ELEMENT ASSY, AIR CLEANER	1				
21	2UP-E4453-00	JOINT, AIR CLEANER 1	1				
22	2UP-E4452-00	SEAL	1				
23	2UP-E4877-00	RESONATOR	1				
24	90467-20050	CLIP	2				
25	20P-E443E-00	PIPE, DRAIN	1				
26	90467-12800	CLIP	1				
27	97602-05320	SCREW, PAN HEAD WITH WASHER	6				

FIG. 6 INTAKE



2UP1460-P060

REF. NO.	PART NO.	DESCRIPTION	QTY				REMARKS
28	2UP-E4437-00	DUCT	1				
29	2UP-E4419-00	PIPE	1				
30	90387-06737	COLLAR	1				
31	90387-09806	COLLAR	2				
32	95827-06016	BOLT, FLANGE	3				
33	2UP-E1166-00	PIPE, BREATHER 1	1				
34	90467-15802	CLIP	1				
35	90467-13808	CLIP	1				

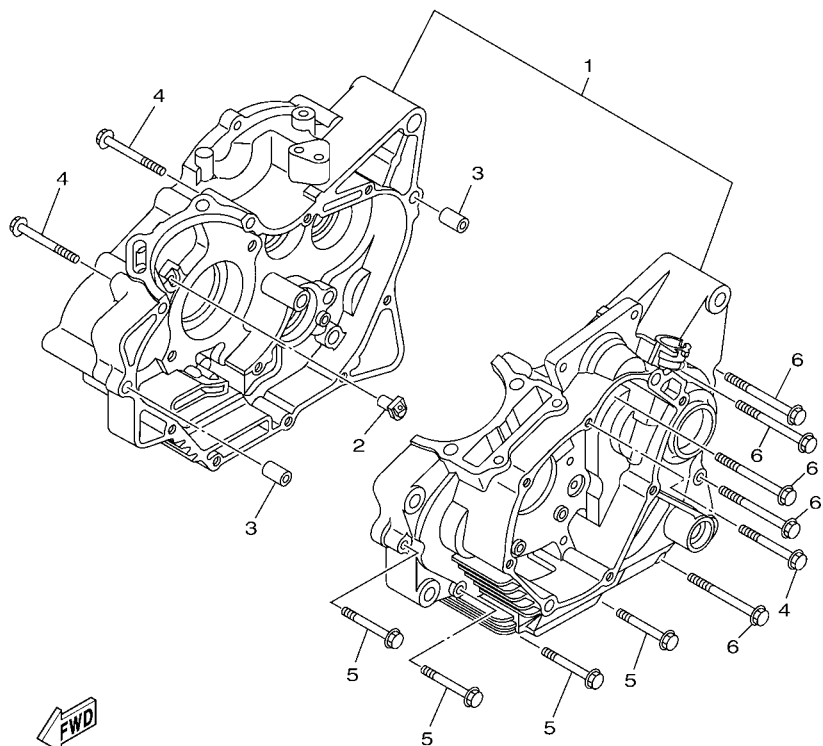
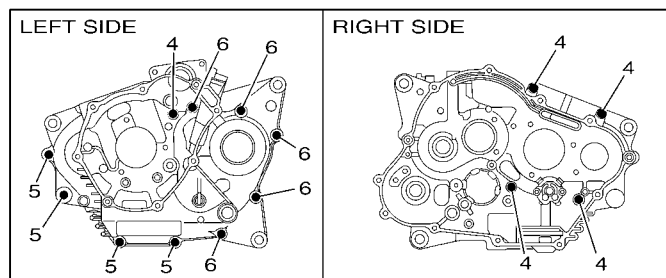


2GS1470-P070

FIG. 7 EXHAUST

REF. NO.	PART NO.	DESCRIPTION	2UP1				REMARKS
1	2UP-E4703-00	MUFFLER COMP. 1	1				
2	2UP-E4718-00	PROTECTOR, MUFFLER 1	1				
3	2UP-E4799-00	CAP	1				
4	90480-12812	GROMMET	4				
5	90387-06023	COLLAR	4				
6	90111-06826	BOLT,HEX. SOCKET BUTTON	4				
7	90111-06807	BOLT,HEX. SOCKET BUTTON	2				
8	2UP-E4757-00	DAMPER, MUFFLER 2	1				
9	45P-E4775-00	NUT	1				
10	5TP-E4747-00	DAMPER, MUFFLER	1				
11	1WD-E4613-00	GASKET, EXHAUST PIPE	1				
12	95702-08500	NUT, FLANGE	3				
13	90201-08612	WASHER, PLATE	3				
14	95807-08025	BOLT, FLANGE	1				
15	95807-08035	BOLT, FLANGE	1				
16	95812-08040	BOLT, FLANGE	1				
17	90201-087F0	WASHER, PLATE	1				

FIG. 8 CRANKCASE



2UP1460-P080

REF. NO.	PART NO.	DESCRIPTION	ZUP1				REMARKS
1	2UP-E5150-00	CRANKCASE ASSY	1				
2	45P-E5155-00	NOZZLE 3	1				
3	91810-14809	PIN, DOWEL	2				
4	95027-06055	BOLT, FLANGE	5				
5	95027-06045	BOLT, FLANGE	4				
6	95027-06070	BOLT, FLANGE	5				
<hr/>							
<hr/>							
<hr/>							
<hr/>							
<hr/>							
<hr/>							
<hr/>							
<hr/>							
<hr/>							

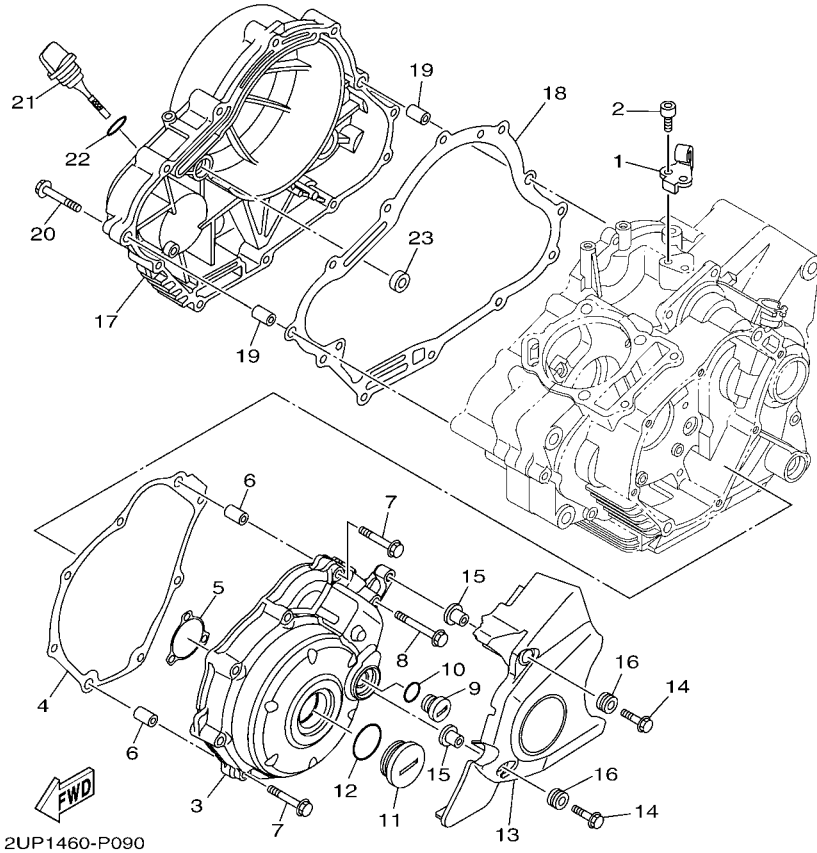
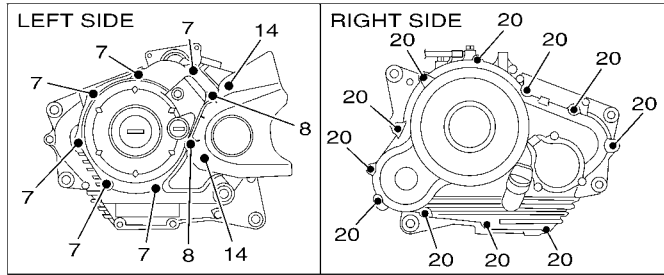
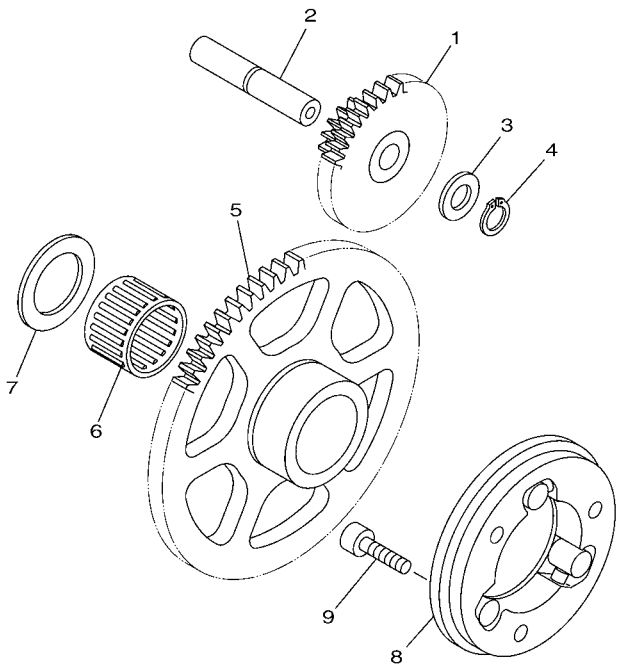


FIG. 9 CRANKCASE COVER 1

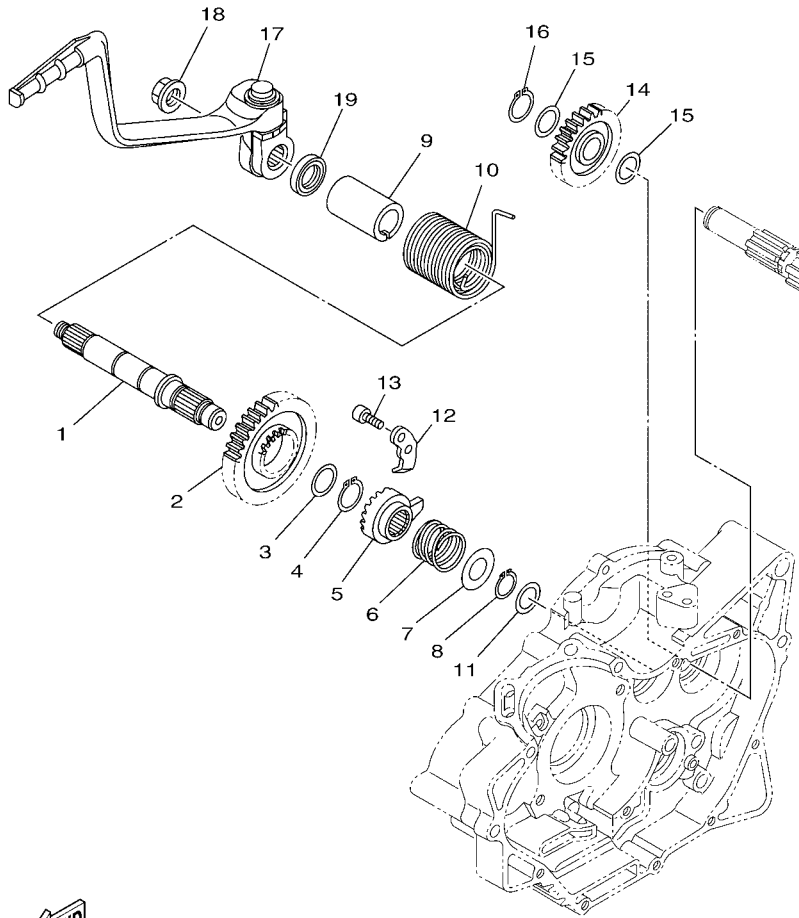
REF. NO.	PART NO.	DESCRIPTION	ZUP1				REMARKS
1	45P-E5441-00	HOLDER, CLUTCH CABLE	1				
2	91317-06014	BOLT	2				
3	2UP-E5411-00	COVER, CRANKCASE 1	1				
4	45P-E5451-10	GASKET, CRANKCASE COVER 1	1				
5	45P-E5353-10	GASKET, DRAIN	1				
6	91810-14809	PIN, DOWEL	2				
7	95027-06040	BOLT, FLANGE	6				
8	95027-06050	BOLT, FLANGE	2				
9	90340-14826	PLUG, STRAIGHT SCREW	1				
10	93210-14899	O-RING	1				
11	90340-32827	PLUG, STRAIGHT SCREW	1				
12	93210-328A4	O-RING	1				
13	2UP-E5418-00	COVER, CHAIN CASE	1				
14	95807-06020	BOLT, FLANGE	2				
15	90387-068C9	COLLAR	2				
16	90480-12812	GROMMET	2				
17	45P-E5421-00	COVER, CRANKCASE 2	1				
18	45P-E5461-10	GASKET, CRANKCASE COVER 2	1				
19	91810-14809	PIN, DOWEL	2				
20	95027-06040	BOLT, FLANGE	11				
21	45P-E5362-00	PLUG, OIL LEVEL	1				
22	93210-19809	O-RING	1				
23	93101-10843	OIL SEAL	1				

FIG. 10 STARTER CLUTCH



REF. NO.	PART NO.	DESCRIPTION	2UP1				REMARKS
1	2UP-E5514-00	GEAR 2	1				
2	21C-E5521-00	SHAFT 1	1				
3	90201-105E8	WASHER, PLATE	1				
4	99009-10400	CIRCLIP	1				
5	2UP-E5524-00	WHEEL, STARTER	1				
6	93310-325X3	BEARING	1				
7	90201-25290	WASHER, PLATE	1				
8	1ST-E5580-00	STARTER CLUTCH OUTER ASSY	1				
9	91317-06020	BOLT	3				

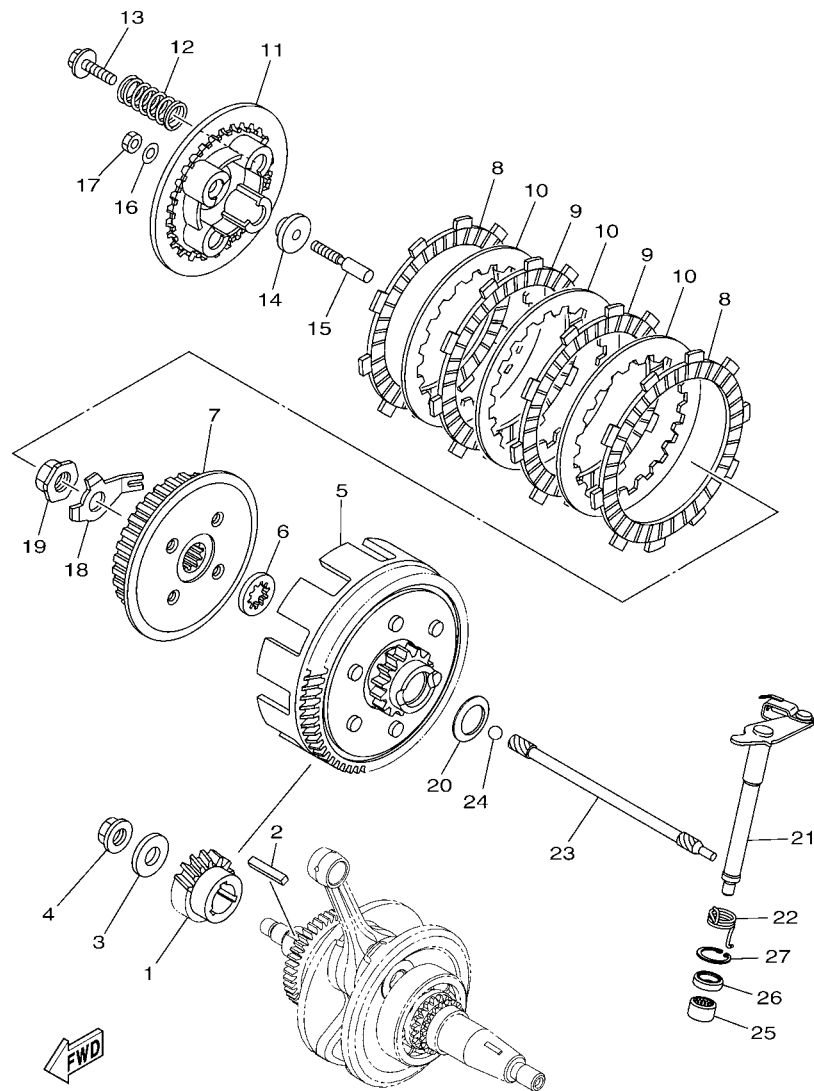

45P1460-J110




 2UP1460-P110

FIG. 11 STARTER

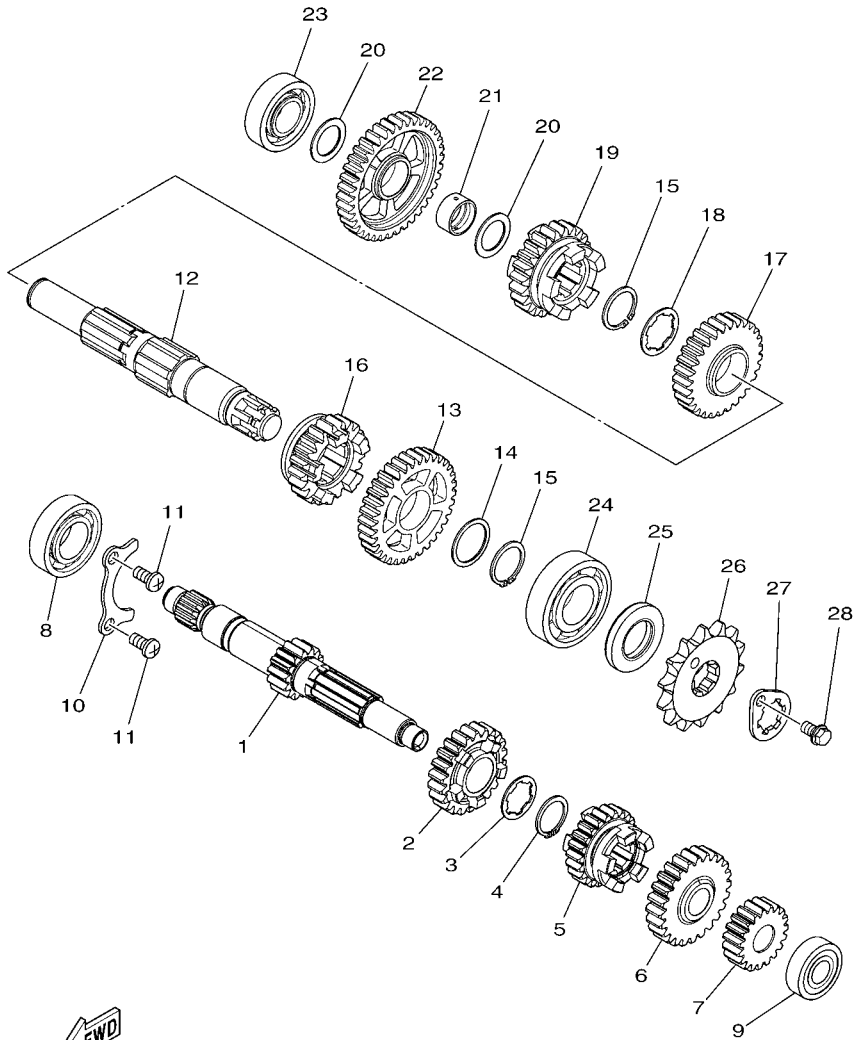
REF. NO.	PART NO.	DESCRIPTION	2UP1				REMARKS
1	2UP-E5661-00	AXLE, KICK	1				
2	45P-E5641-00	GEAR, KICK	1				
3	90201-20685	WASHER, PLATE (T=0.5)	1				
4	93410-20038	CIRCLIP	1				
5	45P-E5671-00	WHEEL, RATCHET	1				
6	45P-E5767-00	SPRING	1				
7	90201-167P7	WASHER, PLATE	1				
8	99009-16400	CIRCLIP	1				
9	2UP-E5664-00	GUIDE, SPRING	1				
10	2UP-E5665-00	SPRING, KICK	1				
11	90201-162H4	WASHER, PLATE	1				
12	45P-E5674-00	GUIDE, RATCHET WHEEL	1				
13	91317-06016	BOLT	2				
14	45P-E5651-10	GEAR, KICK IDLE	1				
15	90201-177G4	WASHER, PLATE	2				
16	99009-17400	CIRCLIP	1				
17	2UP-E5620-00	KICK CRANK ASSY	1				
18	90179-12659	NUT	1				
19	93109-20800	OIL SEAL	1				



2UP1460-P120

FIG. 12 CLUTCH

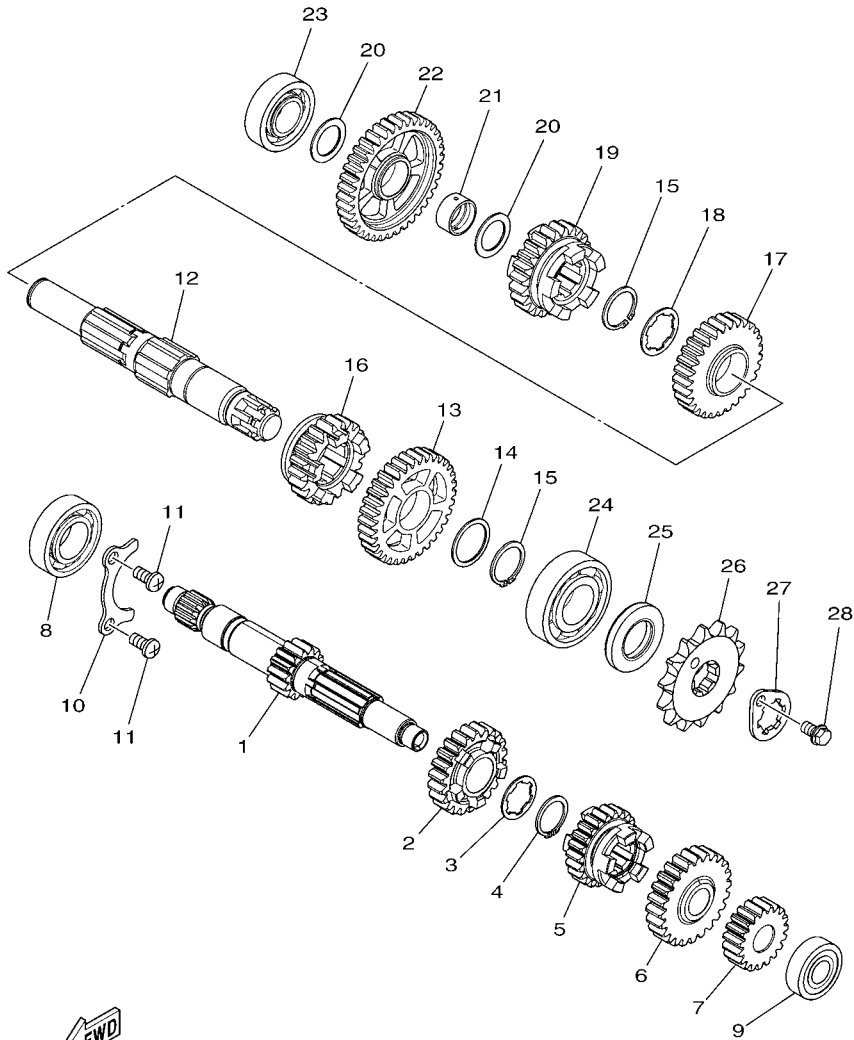
REF. NO.	PART NO.	DESCRIPTION	ZUP1				REMARKS
1	45P-E6111-01	GEAR, PRIMARY DRIVE	1				
2	90282-05077	KEY, STRAIGHT	1				
3	90201-12019	WASHER, PLATE	1				
4	90179-12802	NUT	1				
5	2UP-E6150-00	PRIMARY DRIVEN GEAR COMP.	1				
6	2ND-E6154-00	PLATE, THRUST 1	1				
7	45P-E6371-00	BOSS, CLUTCH	1				
8	2UP-E6321-00	PLATE, FRICTION	2				
9	45P-E6331-00	PLATE, FRICTION 2	2				
10	45P-E6324-00	PLATE, CLUTCH 1	3				
11	45P-E6351-00	PLATE, PRESSURE 1	1				
12	45P-E6333-00	SPRING, CLUTCH 1	4				
13	45P-E6337-00	SCREW, SPRING	4				
14	2ND-E6358-00	PLATE, PUSH	1				
15	45P-E6356-00	ROD, PUSH 1	1				
16	3C1-E6144-00	WASHER	1				
17	3C1-E6344-00	NUT, ADJUSTING	1				
18	45P-E6135-00	WASHER, LOCK	1				
19	90179-14001	NUT	1				
20	90208-20003	WASHER, CONICAL SPRING	1				
21	21C-E6380-02	PUSH LEVER ASSY	1				
22	2UP-E6345-00	SPRING, RETURN	1				
23	45P-E6357-00	ROD, PUSH 2	1				
24	93505-16844	BALL	1				
25	93315-112Y9	BEARING	1				
26	93102-12862	OIL SEAL	1				
27	99009-20500	CIRCLIP	1				



2UP1460-P130

FIG. 13 TRANSMISSION

REF. NO.	PART NO.	DESCRIPTION	2UP1				REMARKS
1	2UP-E7411-00	AXLE, MAIN (14T)	1				UR
	45P-E7411-00	AXLE, MAIN (14T)	1				UR
2	1ST-E7141-00	GEAR, 4RD PINION (23T)	1				
3	90209-17285	WASHER	1				
4	93410-20038	CIRCLIP	1				
5	2UP-E7131-00	GEAR, 3RD PINION (22T)	1				
6	2UP-E7151-00	GEAR, 5TH PINION (24T)	1				
7	45P-E7121-00	GEAR, 2ND PINION (19T)	1				
8	93306-054YG	BEARING	1				
9	93306-201YF	BEARING	1				
10	45P-E7471-00	PLATE, COVER	1				
11	98517-06012	SCREW, PAN HEAD	2				
12	45P-E7402-00	DRIVE AXLE ASSY	1				
13	45P-E7221-00	GEAR, 2ND WHEEL (34T)	1				
14	90201-22793	WASHER, PLATE	1				
15	93410-22039	CIRCLIP	2				
16	2UP-E7251-00	GEAR, 5TH WHEEL (21T)	1				
17	45P-E7231-00	GEAR, 3RD WHEEL (29T)	1				
18	90209-18208	WASHER	1				
19	2UP-E7241-00	GEAR, 4TH WHEEL (23T)	1				
20	90201-177G4	WASHER, PLATE	2				
21	45P-E7258-00	COLLAR 1	1				
22	45P-E7211-00	GEAR, 1ST WHEEL (38T)	1				
23	93306-253X2	BEARING	1				
24	93306-272X1	BEARING	1				
25	93102-22827	OIL SEAL	1				
26	93822-14800	SPROCKET, DRIVE (14T)	1				

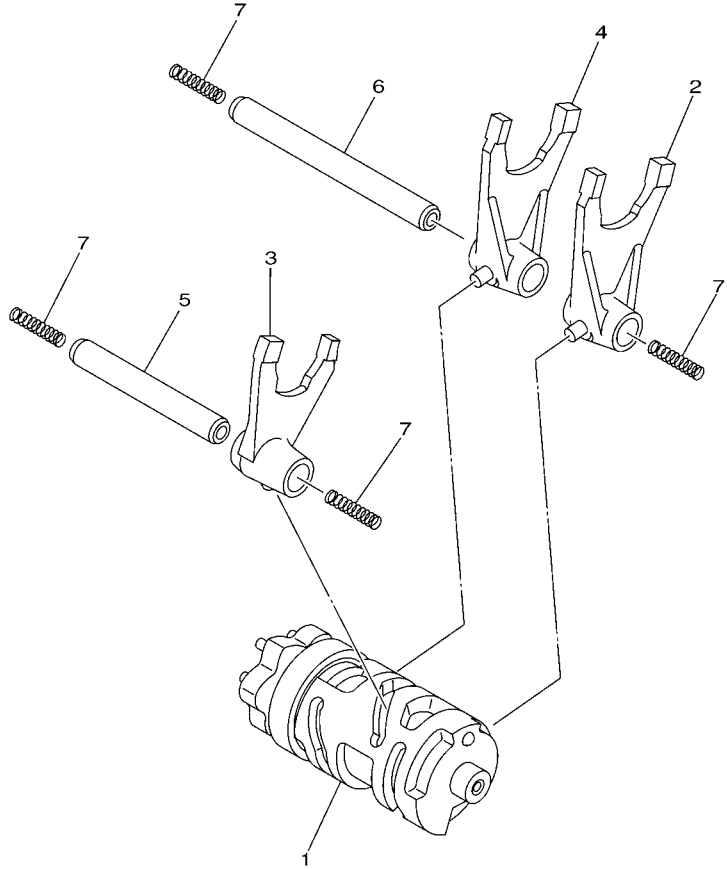


2UP1460-P130

FIG. 13 TRANSMISSION

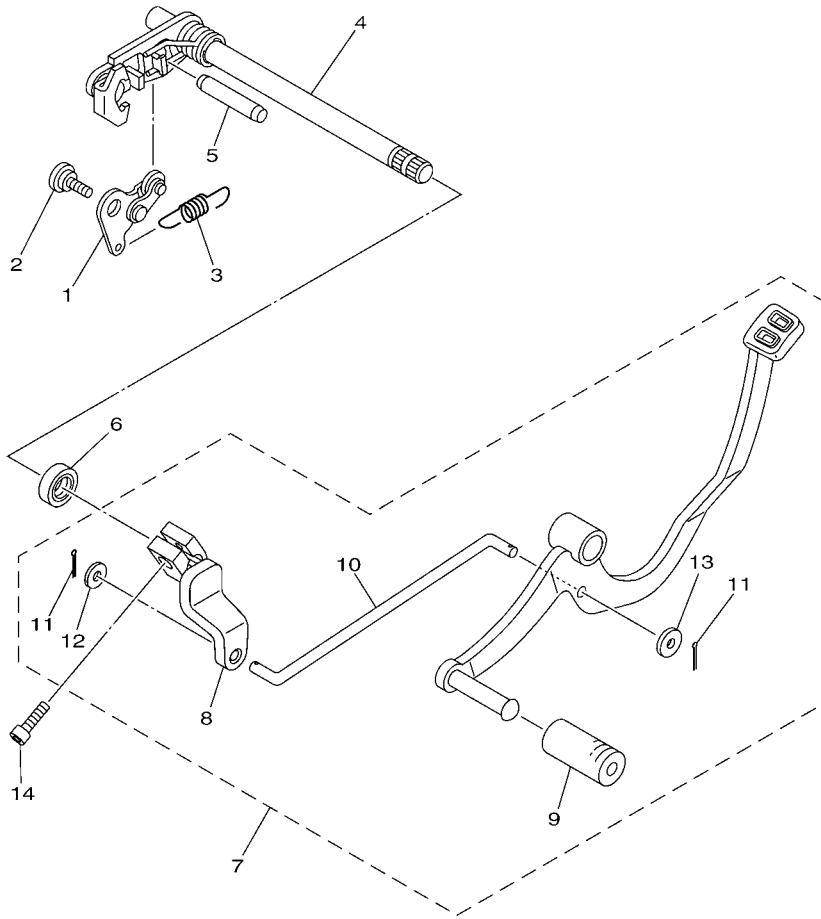
REF. NO.	PART NO.	DESCRIPTION	2UP1				REMARKS
27	1S7-E7456-00	HOLDER, SPROCKET	1				
28	95027-06010	BOLT, FLANGE	1				

FIG. 14 SHIFT CAM & FORK




 21C1470-G140

REF. NO.	PART NO.	DESCRIPTION	2UP1				REMARKS
1	2UP-E8540-00	SHIFT CAM ASSY	1				
2	45P-E8511-00	FORK, SHIFT 1	1				
3	45P-E8512-00	FORK, SHIFT 2	1				
4	45P-E8513-00	FORK, SHIFT 3	1				
5	21C-E8531-00	BAR, SHIFT FORK GUIDE 1	1				
6	21C-E8535-00	BAR, SHIFT FORK GUIDE 2	1				
7	90501-06800	SPRING, COMPRESSION	4				



FWD
45P1460-J160

FIG. 15 SHIFT SHAFT

REF. NO.	PART NO.	DESCRIPTION	ZUP1				REMARKS
1	21C-E8140-00	STOPPER LEVER ASSY	1				
2	90109-06279	BOLT	1				
3	45P-E8337-00	SPRING	1				
4	21C-E8101-01	SHIFT SHAFT ASSY	1				
5	93608-43238	PIN, DOWEL	1				
6	93101-12804	OIL SEAL	1				
7	45P-E8110-00	SHIFT PEDAL ASSY	1				
8	45P-E8112-00	.ARM, SHIFT	1				
9	1EG-E8113-01	.COVER, SHIFT PEDAL	1				
10	45P-E8115-00	.ROD, SHIFT	1				
11	91401-20012	.PIN, COTTER	2				
12	92907-06200	.WASHER	1				
13	90201-06871	.WASHER, PLATE	1				
14	97012-06020	BOLT	1				

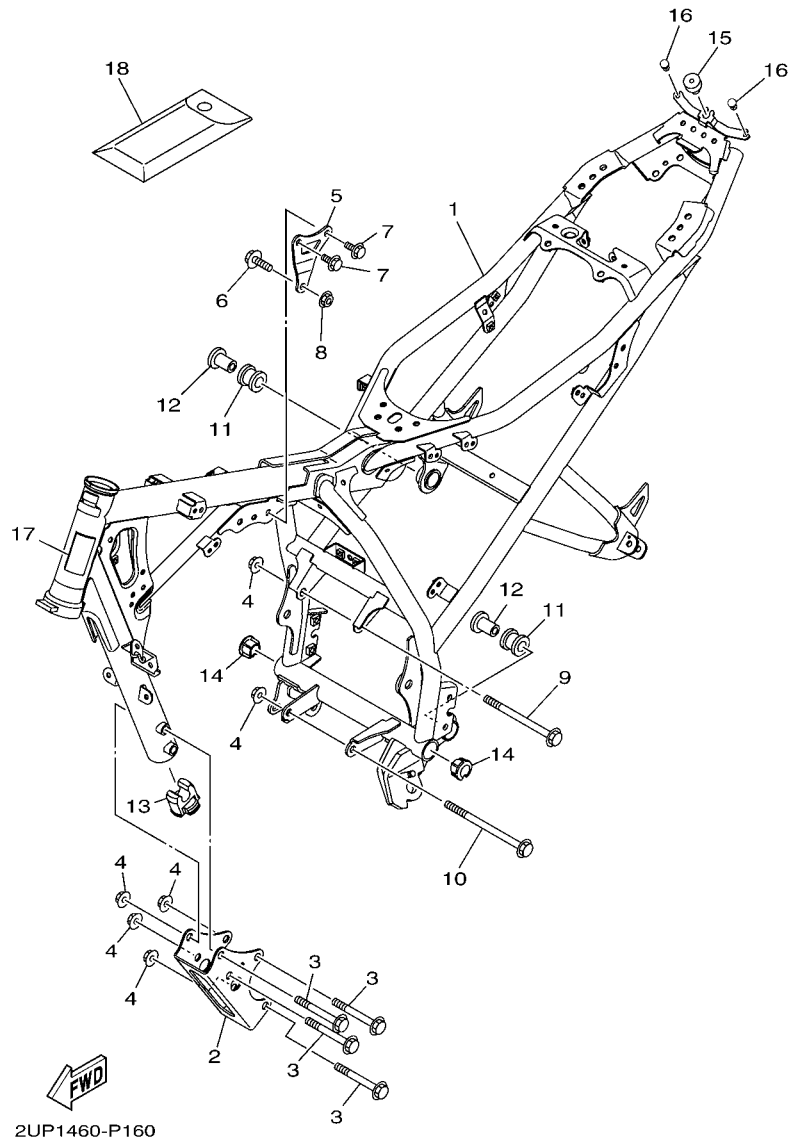


FIG. 16 FRAME

REF. NO.	PART NO.	DESCRIPTION	2UP1				REMARKS
1	2UP-F1110-00	FRAME COMP.	1				
2	2UP-F1316-00	STAY, ENGINE 2	1				
3	95817-10080	BOLT, FLANGE	4				
4	90179-10811	NUT	6				
5	2UP-F1317-00	STAY, ENGINE 3	1				
6	90105-08002	BOLT, FLANGE	1				
7	95812-08016	BOLT, FLANGE	2				
8	90179-08818	NUT	1				
9	95817-10130	BOLT, FLANGE	1				
10	90105-10079	BOLT, FLANGE	1				
11	5TP-E4747-00	DAMPER, MUFFLER	2				
12	90387-08813	COLLAR	2				
13	45P-F1638-00	DAMPER 1	1				
14	2UP-F1279-00	PLUG, BLIND	2				
15	3C1-F4741-00	PAD, SEAT	1				
16	45P-F1717-00	DAMPER	2				
17	5D9-F414G-00	SEAL	1				
18	45P-F8100-00	TOOL KIT	1				

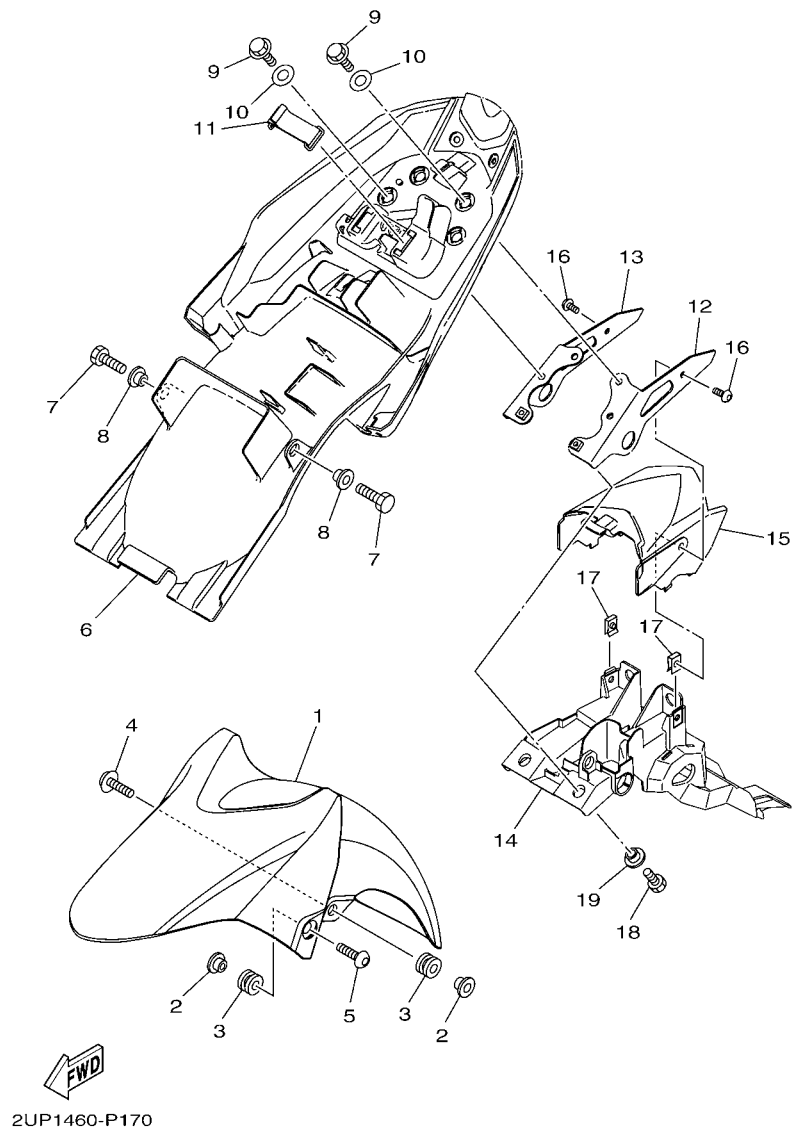


FIG. 17 FENDER

REF. NO.	PART NO.	DESCRIPTION	ZUP1				REMARKS
1	45P-F1511-00-8X	FENDER, FRONT	1				UR FOR DBNM8
	45P-F1511-00-4Y	FENDER, FRONT	1				UR FOR VYRM3
	45P-F1511-00-5Y	FENDER, FRONT	1				UR S8 FOR DBNM9
2	90387-068C5	COLLAR	4				
3	90480-12815	GROMMET	4				
4	95802-06020	BOLT, FLANGE	2				
5	90111-06117	BOLT, HEX. SOCKET BUTTON	2				
6	2UP-F1611-00	FENDER, REAR	1				
7	97017-06014	BOLT	2				
8	90387-06048	COLLAR	2				
9	95822-06016	BOLT, FLANGE	4				
10	90387-08079	COLLAR	4				
11	4ST-H2131-00	BAND, BATTERY	1				
12	2UP-F1613-00	STAY, FENDER 1	1				
13	2UP-F1614-00	STAY, FENDER 2	1				
14	2UP-F1651-00	COVER, REAR FENDER	1				
15	2UP-F163A-00	COVER, REAR FENDER 1	1				
16	90149-06829	SCREW	2				
17	90183-06821	NUT, SPRING	2				
18	97017-06014	BOLT	2				
19	90387-06048	COLLAR	2				

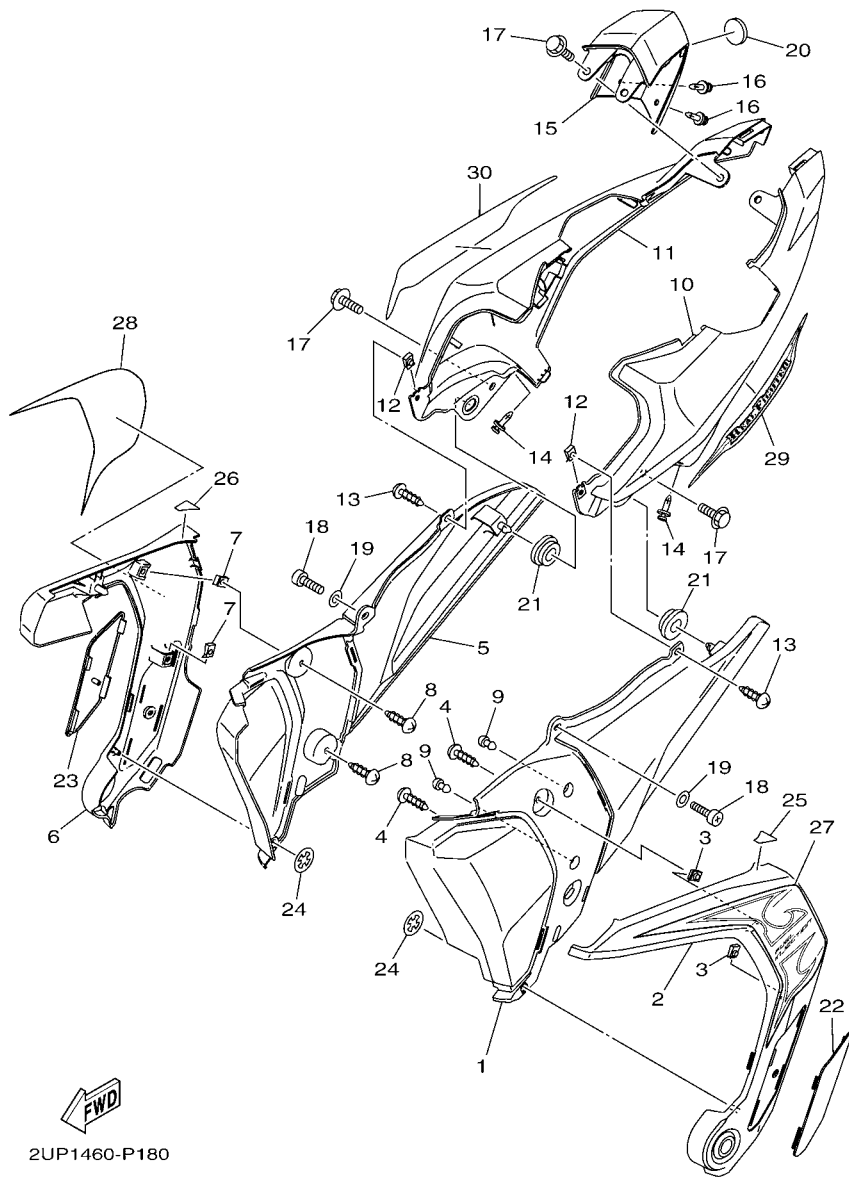
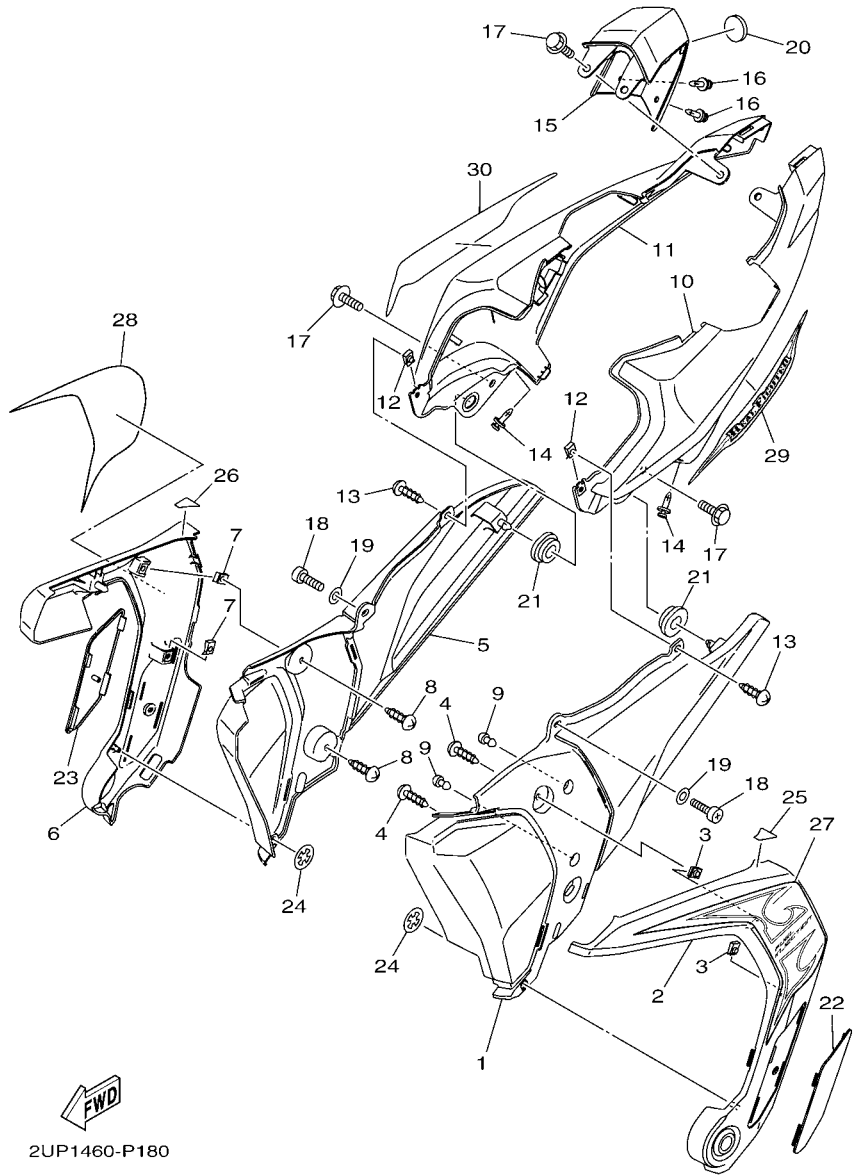


FIG. 18 SIDE COVER

REF. NO.	PART NO.	DESCRIPTION	ZUP1				REMARKS
1	2UP-F1711-00	COVER, SIDE 1	1				
2	2UP-F172A-00-P0	PANEL 1	1				S8(DBNM8)
	2UP-F172A-00-98	PANEL 1	1				LGB(VYRM3,DBNM9)
3	90183-05807	NUT, SPRING	2				
4	97702-50012	SCREW, TAPPING	2				
5	2UP-F1721-00	COVER, SIDE 2	1				
6	2UP-F172F-00-P0	PANEL 2	1				S8(DBNM8)
	2UP-F172F-00-98	PANEL 2	1				LGB(VYRM3,DBNM9)
7	90183-05807	NUT, SPRING	2				
8	97702-50012	SCREW, TAPPING	2				
9	45P-F1717-00	DAMPER	2				
10	2UP-F1731-00-P0	COVER, SIDE 3	1				UR SMX FOR DBNM8
	2UP-F1731-00-P1	COVER, SIDE 3	1				UR FOR VYRM3
	2UP-F1731-00-P2	COVER, SIDE 3	1				UR S8 FOR DBNM9
11	2UP-F1741-00-P0	COVER, SIDE 4	1				UR SMX FOR DBNM8
	2UP-F1741-00-P1	COVER, SIDE 4	1				UR FOR VYRM3
	2UP-F1741-00-P2	COVER, SIDE 4	1				UR S8 FOR DBNM9
12	90183-05807	NUT, SPRING	2				
13	97702-50012	SCREW, TAPPING	2				
14	90269-06816	RIVET	2				
15	2UP-F171E-00-P0	COVER, SIDE 5	1				UR FOR DBNM8
	2UP-F171E-00-P1	COVER, SIDE 5	1				UR FOR VYRM3
	2UP-F171E-00-P3	COVER, SIDE 5	1				UR S8 FOR DBNM9
16	90269-06816	RIVET	2				
17	90119-06137	BOLT, WITH WASHER	4				
18	98502-06014	SCREW, PAN HEAD	2				
19	90201-06055	WASHER, PLATE	2				

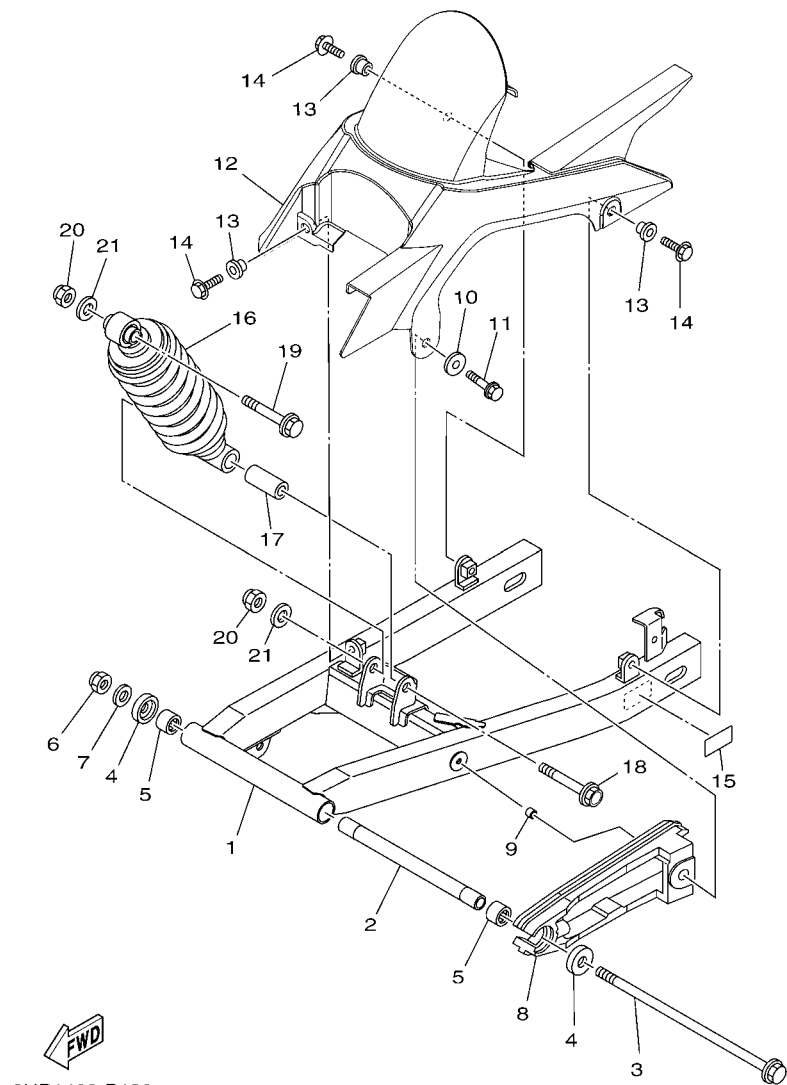


2UP1460-P180

FIG. 18 SIDE COVER

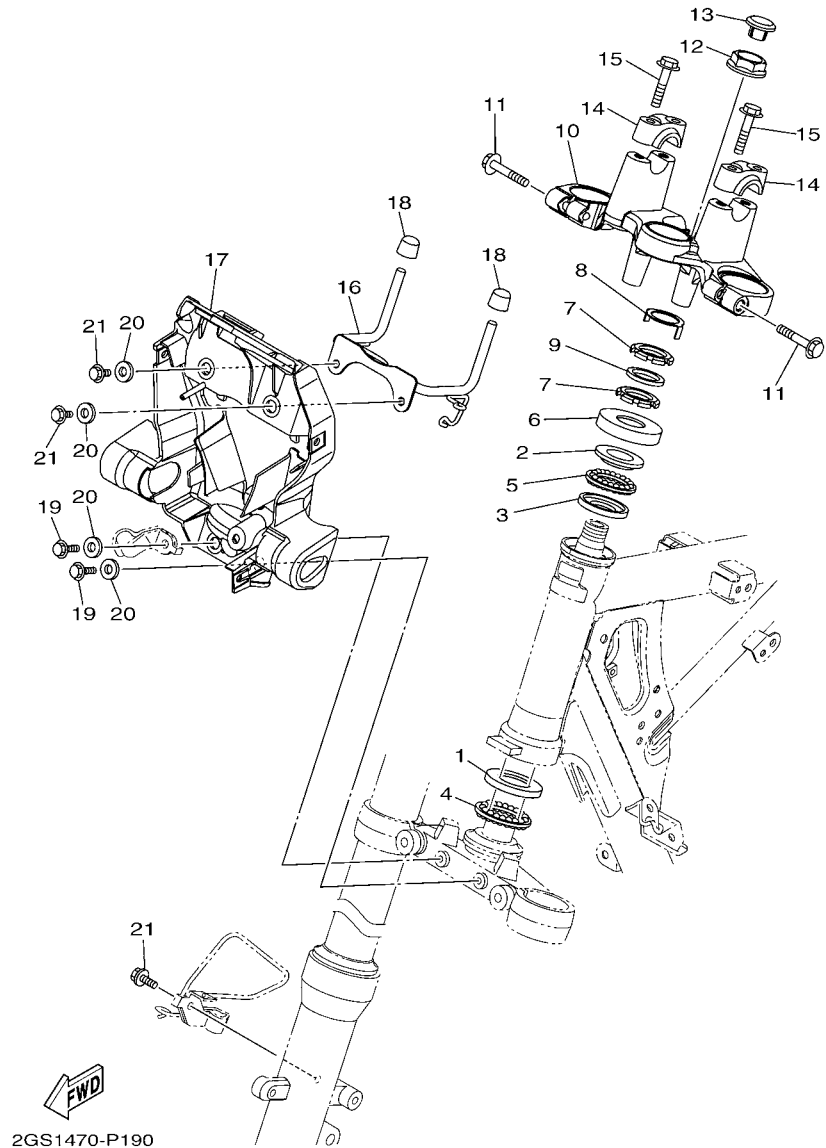
REF. NO.	PART NO.	DESCRIPTION	2UP1				REMARKS
20	5TL-F3108-00	EMBLEM	1				
21	90480-01558	GROMMET	2				
22	2UP-F171L-00	MOLE, SIDE COVER 1	1				
23	2UP-F171M-00	MOLE, SIDE COVER 2	1				
24	90183-05067	NUT, SPRING	2				
25	2UP-F1732-00	SEAL 1	1				
26	2UP-F1735-00	SEAL 2	1				
27	2UP-F173E-00	GRAPHIC 1	1				UR FOR DBNM8
	2UP-F173E-10	GRAPHIC 1	1				UR FOR VYRM3
	2UP-F173E-20	GRAPHIC 1	1				UR FOR DBNM9
28	2UP-F173F-00	GRAPHIC 2	1				UR FOR DBNM8
	2UP-F173F-10	GRAPHIC 2	1				UR FOR VYRM3
	2UP-F173F-20	GRAPHIC 2	1				UR FOR DBNM9
29	2UP-F174G-00	GRAPHIC 3	1				UR FOR DBNM8
	2UP-F174G-10	GRAPHIC 3	1				UR FOR VYRM3
	2UP-F174G-20	GRAPHIC 3	1				UR FOR DBNM9
30	2UP-F174H-00	GRAPHIC 4	1				UR FOR DBNM8
	2UP-F174H-10	GRAPHIC 4	1				UR FOR VYRM3
	2UP-F174H-20	GRAPHIC 4	1				UR FOR DBNM9

FIG. 19 REAR ARM & SUSPENSION



2UP1460-P190

REF. NO.	PART NO.	DESCRIPTION	ZUP1				REMARKS
1	2UP-F2110-00	REAR ARM COMP.	1				
2	90387-12863	COLLAR	1				
3	2UP-F2141-00	SHAFT, PIVOT	1				
4	5BP-F2129-01	COVER, THRUST 2	2				
5	93317-218Y1	BEARING	2				
6	95607-12200	NUT, SELF-LOCKING	1				
7	90201-12028	WASHER, PLATE	1				
8	2UP-F2151-00	SEAL, GUARD	1				
9	90387-066J9	COLLAR	1				
10	90201-060A3	WASHER, PLATE	1				
11	97027-06025	BOLT, HEXAGON	1				
12	45P-F1650-00	REAR FENDER COMP.	1				
13	90387-068S1	COLLAR	3				
14	95827-06014	BOLT, FLANGE	3				
15	1WD-F1668-00	LABEL, TIRE	1				
16	2UP-F2210-00	SHOCK ABSORBER ASSY, REAR	1				
17	90387-12845	COLLAR	1				
18	90105-12660	BOLT, FLANGE	1				
19	90105-12804	BOLT, FLANGE	1				
20	95612-12100	NUT, U	2				
21	90201-122H1	WASHER, PLATE	2				



2GS1470-P190

FIG. 20 STEERING

REF. NO.	PART NO.	DESCRIPTION	ZUP1				REMARKS
1	1KL-F3412-10	RACE, BALL 2	1				
2	4RT-F3411-10	RACE, BALL 1	1				
3	4RT-F3412-10	RACE, BALL 2	1				
4	5VL-F341E-10	RETAINER, BALL BEARING	1				
5	1P6-F341E-10	RETAINER, BALL BEARING	1				
6	5TL-F3416-00	COVER, BALL RACE 2	1				
7	90179-25615	NUT	2				
8	5BP-F3418-00	WASHER, SPECIAL	1				
9	90202-26142	WASHER, PLATE	1				
10	45P-F3435-10	CROWN, HANDLE	1				
11	95022-08040	BOLT, FLANGE	2				
12	90179-22025	NUT	1				
13	2UP-F3438-00	CAP, END	1				
14	45P-F3441-10	HOLDER, HANDLE UPPER	2				
15	95022-08035	BOLT, FLANGE	4				
16	2UP-F317E-00	STAY 1	1				
17	2UP-F317F-00	STAY 2	1				
18	45P-F317J-00	DAMPER 1	2				
19	95822-06016	BOLT, FLANGE	2				
20	90387-07819	COLLAR	4				
21	95822-06012	BOLT, FLANGE	3				

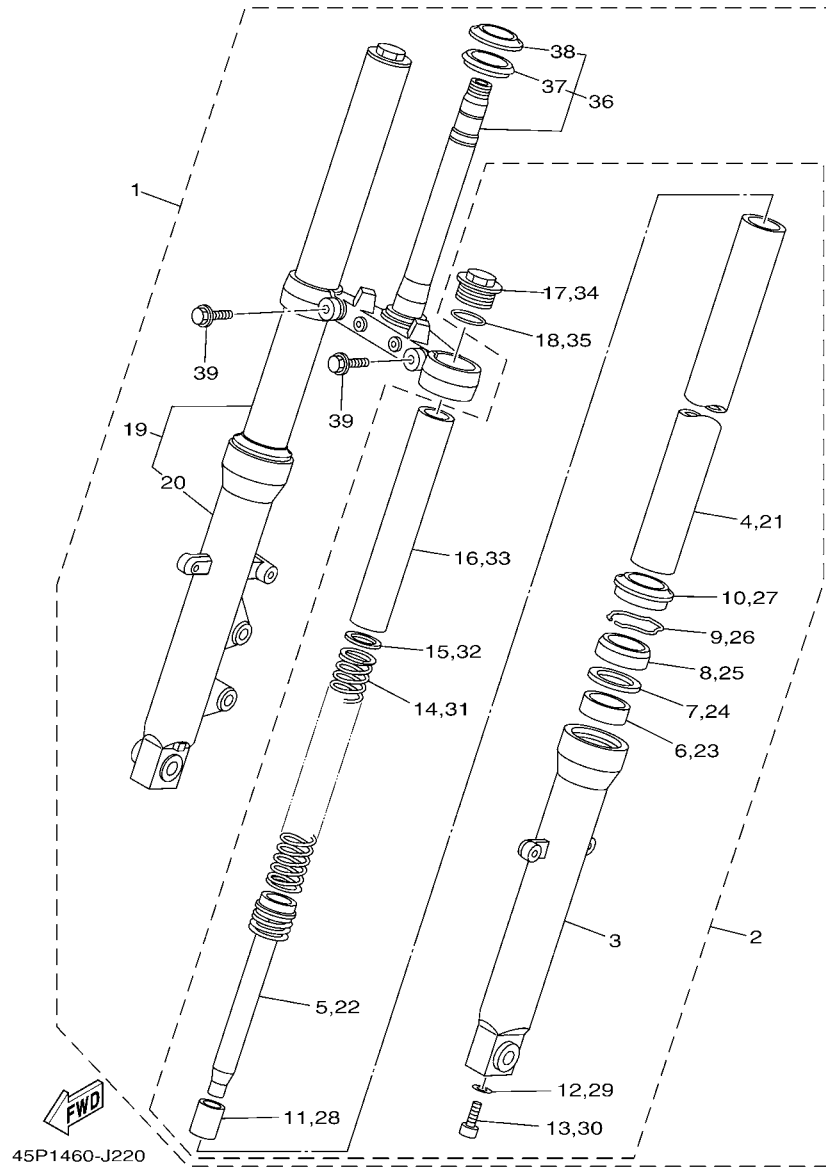


FIG. 21 FRONT FORK

REF. NO.	PART NO.	DESCRIPTION	2UP1				REMARKS
1	2UP-F3100-00	FRONT FORK ASSY	1				
2	2UP-F3102-00	.FRONT FORK ASSY (L.H)	1				
3	45P-F3126-00	..TUBE, OUTER (L.H)	1				
4	2UP-F3110-00	..INNER TUBE COMP.1	1				
5	45P-F3170-00	..CYLINDER COMP., FRONT FORK	1				
6	45P-F3125-00	..METAL, SLIDE 1	1				
7	45P-F3146-00	..WASHER, OIL SEAL	1				
8	45P-F3145-00	..OIL SEAL	1				
9	45P-F3156-00	..RING, SNAP	1				
10	45P-F3144-00	..SEAL, DUST	1				
11	1WD-F3173-00	..SPINDLE, TAPER	1				
12	2BU-F3158-00	..GASKET	1				
13	31B-F3181-00	..BOLT, HEXAGON SOCKET HEAD	1				
14	45P-F3141-00	..SPRING, FRONT FORK	1				
15	45P-F3149-00	..WASHER, SPRING UPPER	1				
16	1WD-F3118-00	..SPACER	1				
17	2UP-F3111-00	..BOLT, CAP	1				
18	45P-F3188-00	..O-RING	1				
19	2UP-F3103-00	.FRONT FORK ASSY (R.H)	1				
20	45P-F3136-00	..TUBE, OUTER	1				
21	2UP-F3110-00	..INNER TUBE COMP.1	1				
22	45P-F3170-00	..CYLINDER COMP., FRONT FORK	1				
23	45P-F3125-00	..METAL, SLIDE 1	1				
24	45P-F3146-00	..WASHER, OIL SEAL	1				
25	45P-F3145-00	..OIL SEAL	1				
26	45P-F3156-00	..RING, SNAP	1				
27	45P-F3144-00	..SEAL, DUST	1				

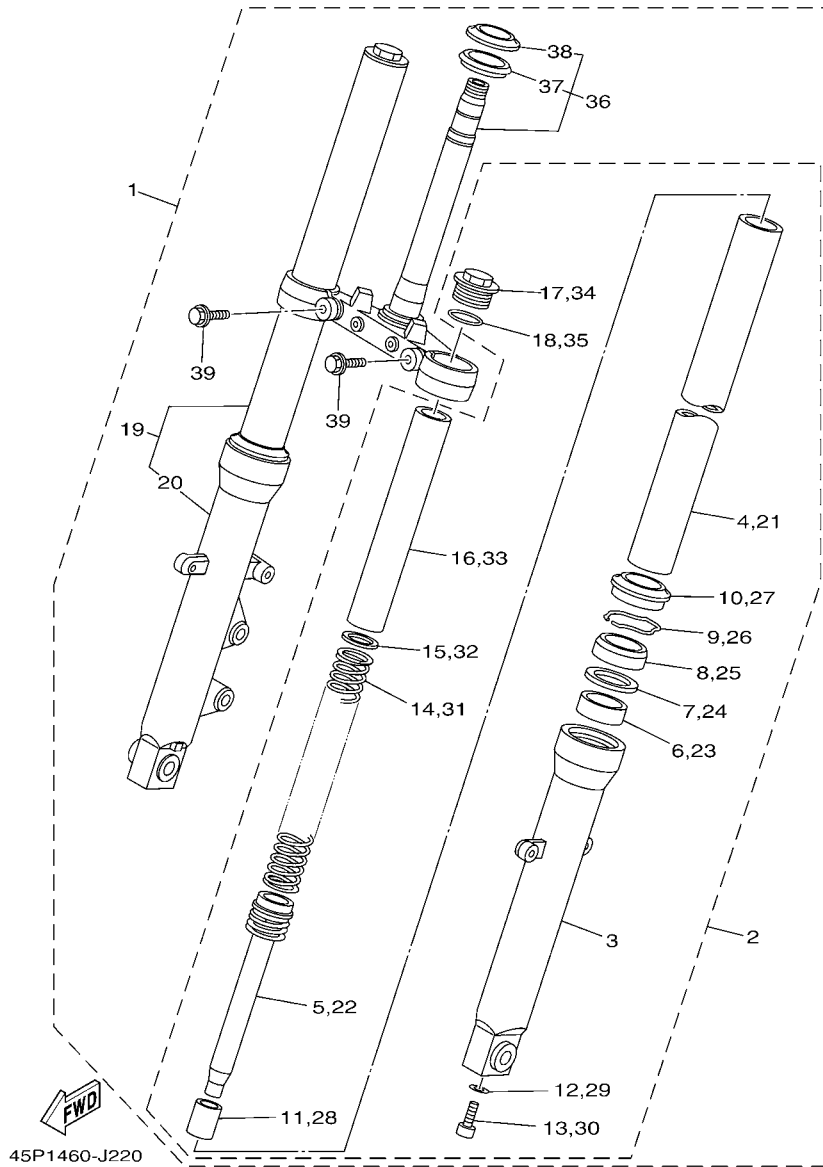
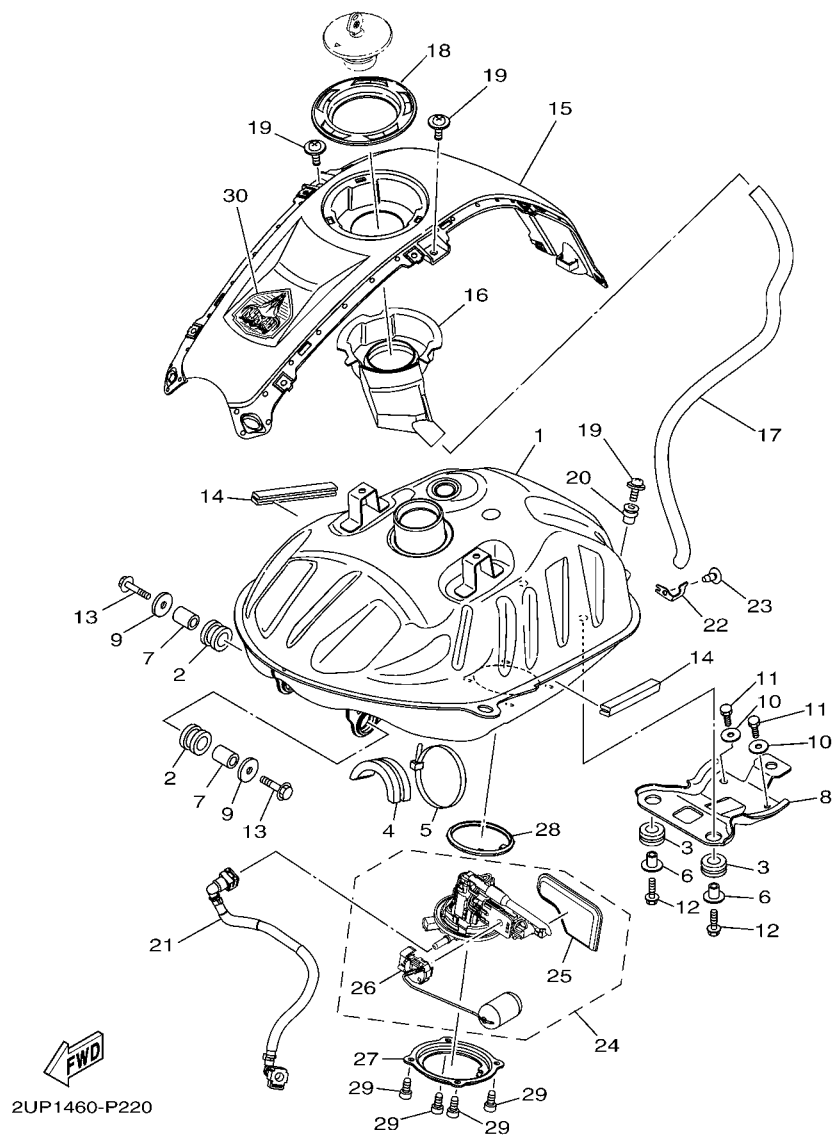


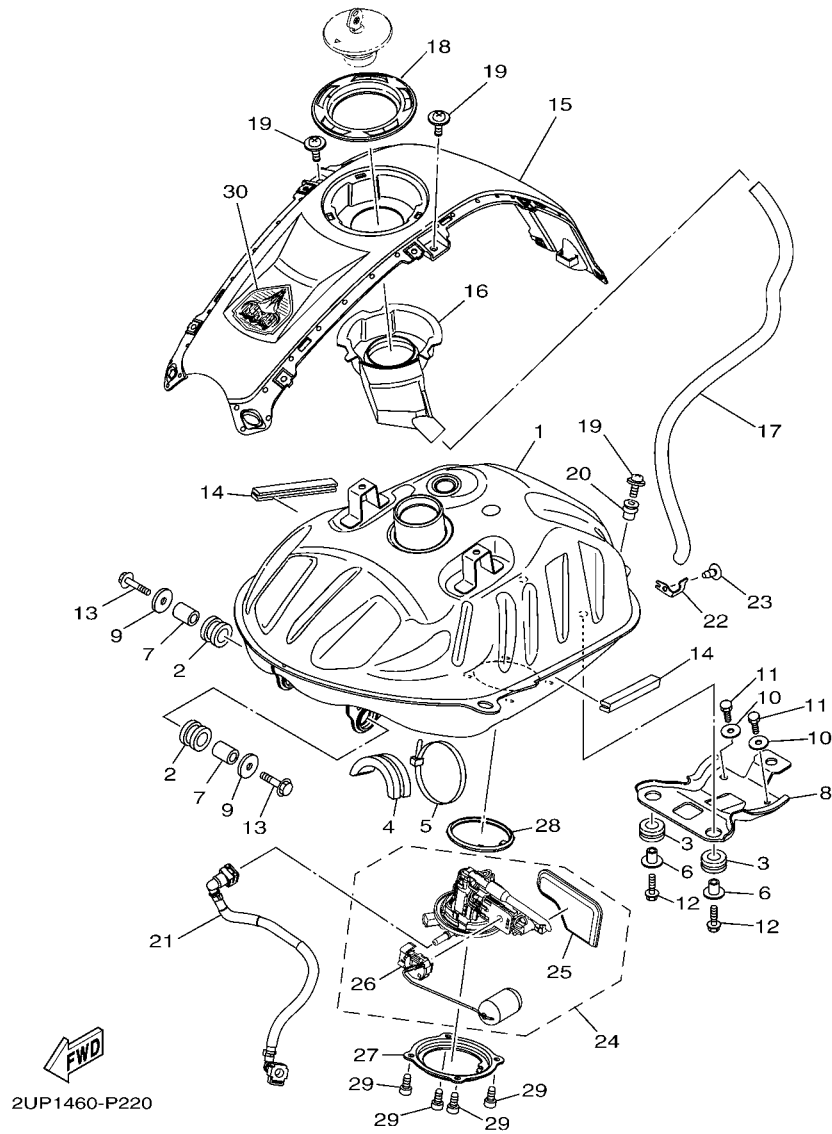
FIG. 21 FRONT FORK

REF. NO.	PART NO.	DESCRIPTION	2UP1				REMARKS
28	1WD-F3173-00	..SPINDLE, TAPER	1				
29	2BU-F3158-00	..GASKET	1				
30	31B-F3181-00	..BOLT, HEXAGON SOCKET HEAD	1				
31	45P-F3141-00	..SPRING, FRONT FORK	1				
32	45P-F3149-00	..WASHER, SPRING UPPER	1				
33	1WD-F3118-00	..SPACER	1				
34	2UP-F3111-00	..BOLT, CAP	1				
35	45P-F3188-00	..O-RING	1				
36	2UP-F3340-00	.UNDER BRACKET COMP.	1				
37	5VC-23462-00	..SEAL, DUST	1				
38	4FP-F3411-10	..RACE, BALL 1	1				
39	45P-F3346-00	.BOLT 1	2				

FIG. 22 FUEL TANK



REF. NO.	PART NO.	DESCRIPTION	QTY	REMARKS
1	2UP-F4110-00	FUEL TANK COMP.	1	
2	45P-F4181-00	DAMPER, LOCATING 1	2	
3	90480-15363	GROMMET	2	
4	45P-F4183-00	DAMPER, LOCATING 3	1	
5	90464-70800	CLAMP	1	
6	90387-068B2	COLLAR	2	
7	90387-107H6	COLLAR	2	
8	2UP-F4191-00	BRACKET, FUEL TANK 1	1	
9	90201-060A3	WASHER, PLATE	2	
10	90201-06380	WASHER PLAIN	2	
11	97027-06014	BOLT, HEXAGON	2	
12	90105-06169	BOLT, FLANGE	2	
13	95822-06030	BOLT, FLANGE	2	
14	45P-F4188-00	MOLD, FUEL TANK	2	
15	2UP-F171A-00-P0	COVER, TOP	1	UR FOR DBNM8
	2UP-F171A-00-P1	COVER, TOP	1	UR FOR VYRM3
	2UP-F171A-00-98	COVER, TOP	1	UR LGB FOR DBNM9
16	2UP-F414A-00	COVER, FILLER	1	
17	90445-14808	HOSE	1	
18	45P-F4614-00-P0	PLATE, CAP	1	S8
19	90159-05065	SCREW, WITH WASHER	3	
20	90179-05849	NUT	1	
21	2UP-E3971-00	PIPE, FUEL 1	1	
22	2UP-F4364-00	STAY	1	
23	97702-50012	SCREW, TAPPING	1	
24	2UP-E3907-00	FUEL PUMP COMP.	1	
25	54P-E3915-00	.FILTER, FUEL SUCTION	1	



2UP1460-P220

FIG. 22 FUEL TANK

REF. NO.	PART NO.	DESCRIPTION	2UP1				REMARKS
26	2UP-H5752-00	.SENDER UNIT ASSY, FUEL METER	1				
27	2UP-F4491-00	BRACKET, FUEL PUMP	1				
28	54P-F414G-10	SEAL	1				
29	91312-05010	BOLT	4				
30	2UP-F4254-00	GRAPHIC, FUEL TANK 7	1				UR FOR DBNM8
	2UP-F4254-10	GRAPHIC, FUEL TANK 7	1				UR FOR VYRM3
	2UP-F4254-20	GRAPHIC, FUEL TANK 7	1				UR FOR DBNM9

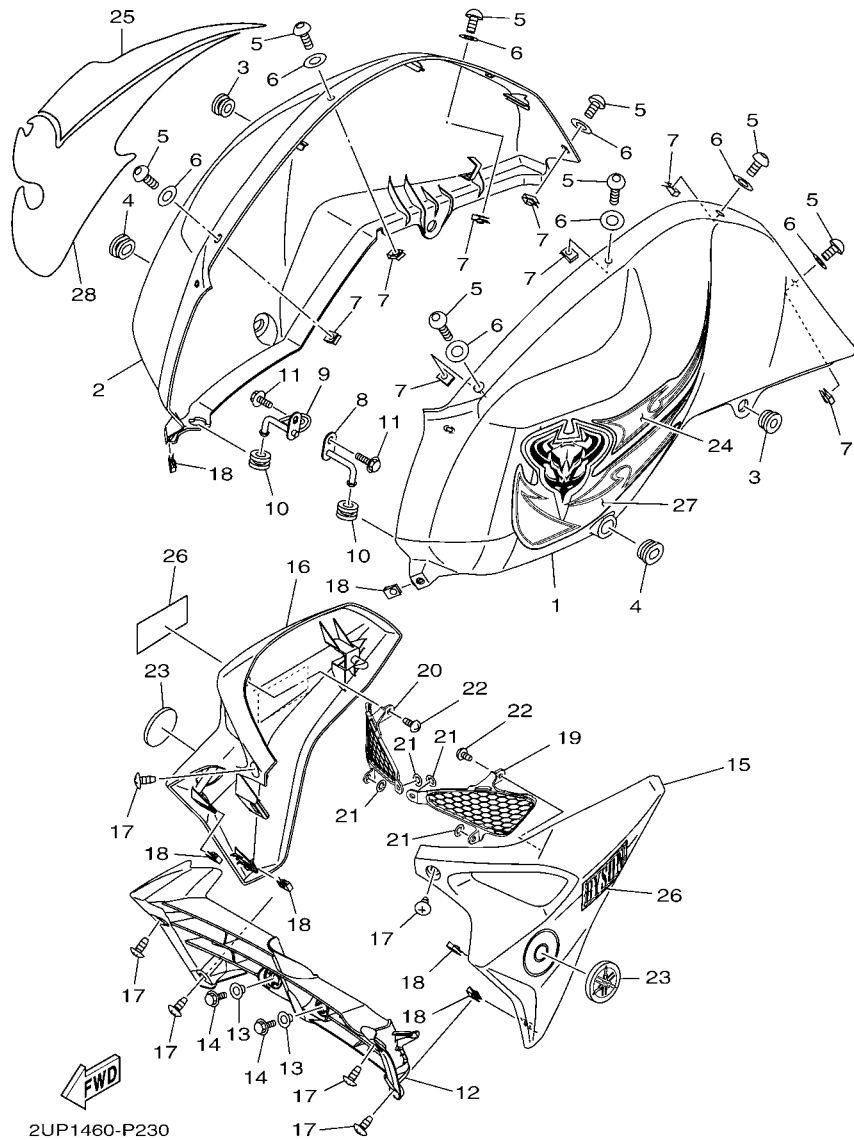


FIG. 23 FUEL TANK 2

REF. NO.	PART NO.	DESCRIPTION	2UP1			REMARKS
1	2UP-F4129-00-P0	COVER, SIDE 1	1			SMX(DBNM8,VYRM3)
	2UP-F4129-00-P1	COVER, SIDE 1	1			DBNM9(DBNM9)
2	2UP-F4139-00-P0	COVER, SIDE 2	1			SMX(DBNM8,VYRM3)
	2UP-F4139-00-P1	COVER, SIDE 2	1			DBNM9(DBNM9)
3	90480-13398	GROMMET	2			
4	90480-01559	GROMMET	2			
5	90160-05812	SCREW, ROUND TAPPING	8			
6	90202-05180	WASHER, PLATE	8			
7	90183-05807	NUT, SPRING	8			
8	2UP-F411G-00	HOOK, SIDE COVER 1	1			
9	2UP-F411H-00	HOOK, SIDE COVER 2	1			
10	90480-14828	GROMMET	2			
11	95802-06012	BOLT, FLANGE	2			
12	2UP-F4124-00	AIR SHROUD	1			
13	90387-06048	COLLAR	2			
14	95827-06012	BOLT, FLANGE	2			
15	2UP-F137U-00-P0	GUIDE, AIR 1	1			UR FOR DBNM8
	2UP-F137U-00-P1	GUIDE, AIR 1	1			UR FOR VYRM3
	2UP-F137U-00-P2	GUIDE, AIR 1	1			UR S8 FOR DBNM9
16	2UP-F137V-00-P0	GUIDE, AIR 2	1			UR FOR DBNM8
	2UP-F137V-00-P1	GUIDE, AIR 2	1			UR FOR VYRM3
	2UP-F137V-00-P2	GUIDE, AIR 2	1			UR S8 FOR DBNM9
17	97702-50012	SCREW, TAPPING	6			
18	90183-05807	NUT, SPRING	6			
19	2UP-F837N-00	GRILL, AIR INTAKE 1	1			
20	2UP-F837R-00	GRILL, AIR INTAKE 2	1			
21	90183-05067	NUT, SPRING	4			

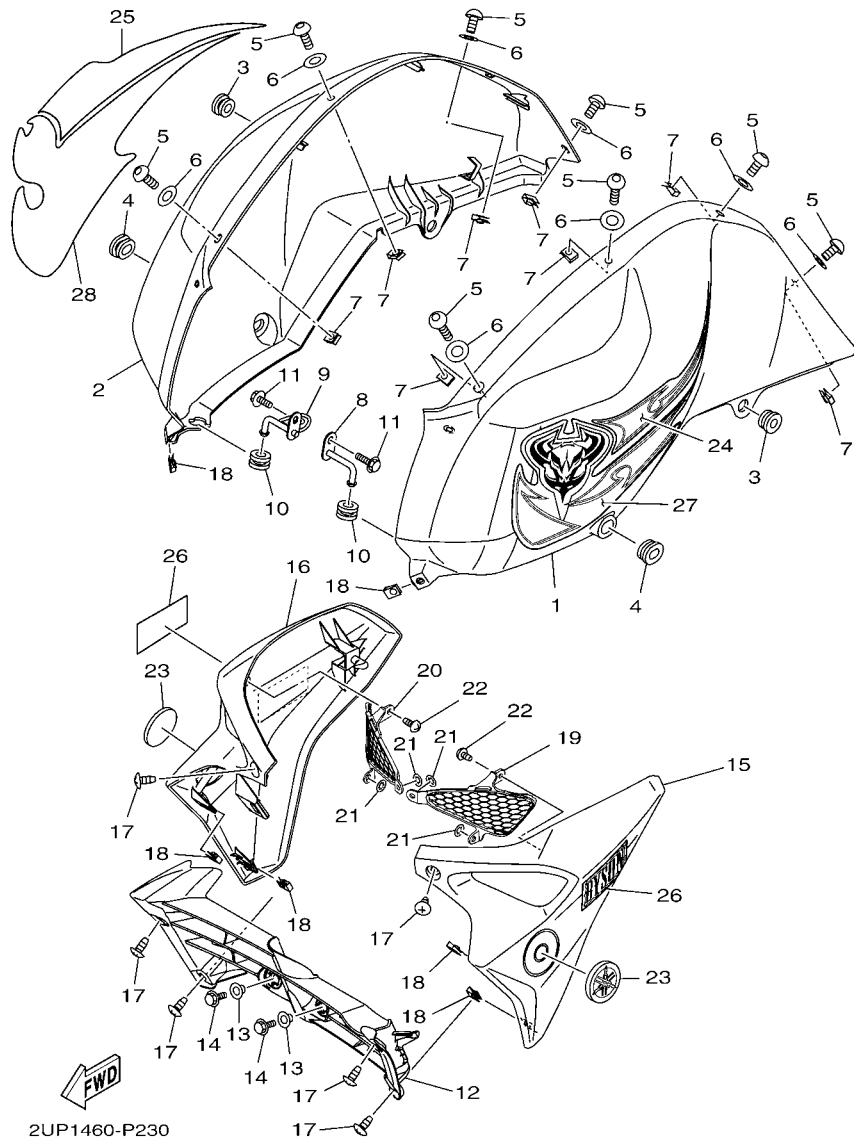


FIG. 23 FUEL TANK 2

REF. NO.	PART NO.	DESCRIPTION	2UP1			REMARKS
22	97702-50012	SCREW, TAPPING	2			
23	40D-F413B-00	EMBLEM	2			
24	2UP-F4246-00	GRAPHIC 3	1			UR FOR DBNM8
	2UP-F4246-10	GRAPHIC 3	1			UR FOR VYRM3
	2UP-F4246-20	GRAPHIC 3	1			UR FOR DBNM9
25	2UP-F4256-00	GRAPHIC, FUEL TANK 9	1			UR FOR DBNM8
	2UP-F4256-10	GRAPHIC, FUEL TANK 9	1			UR FOR VYRM3
	2UP-F4256-20	GRAPHIC, FUEL TANK 9	1			UR FOR DBNM9
26	2UP-F137N-00	GRAPHIC 1	2			UR FOR DBNM8
	2UP-F137N-10	GRAPHIC 1	2			UR FOR VYRM3
	2UP-F137N-20	GRAPHIC 1	2			UR FOR DBNM9
27	2UP-F4244-00	GRAPHIC, FUEL TANK 1	1			UR FOR DBNM8
	2UP-F4244-10	GRAPHIC, FUEL TANK 1	1			UR FOR VYRM3
	2UP-F4244-20	GRAPHIC, FUEL TANK 1	1			UR FOR DBNM9
28	2UP-F4245-00	GRAPHIC, FUEL TANK 2	1			UR FOR DBNM8
	2UP-F4245-10	GRAPHIC, FUEL TANK 2	1			UR FOR VYRM3
	2UP-F4245-20	GRAPHIC, FUEL TANK 2	1			UR FOR DBNM9

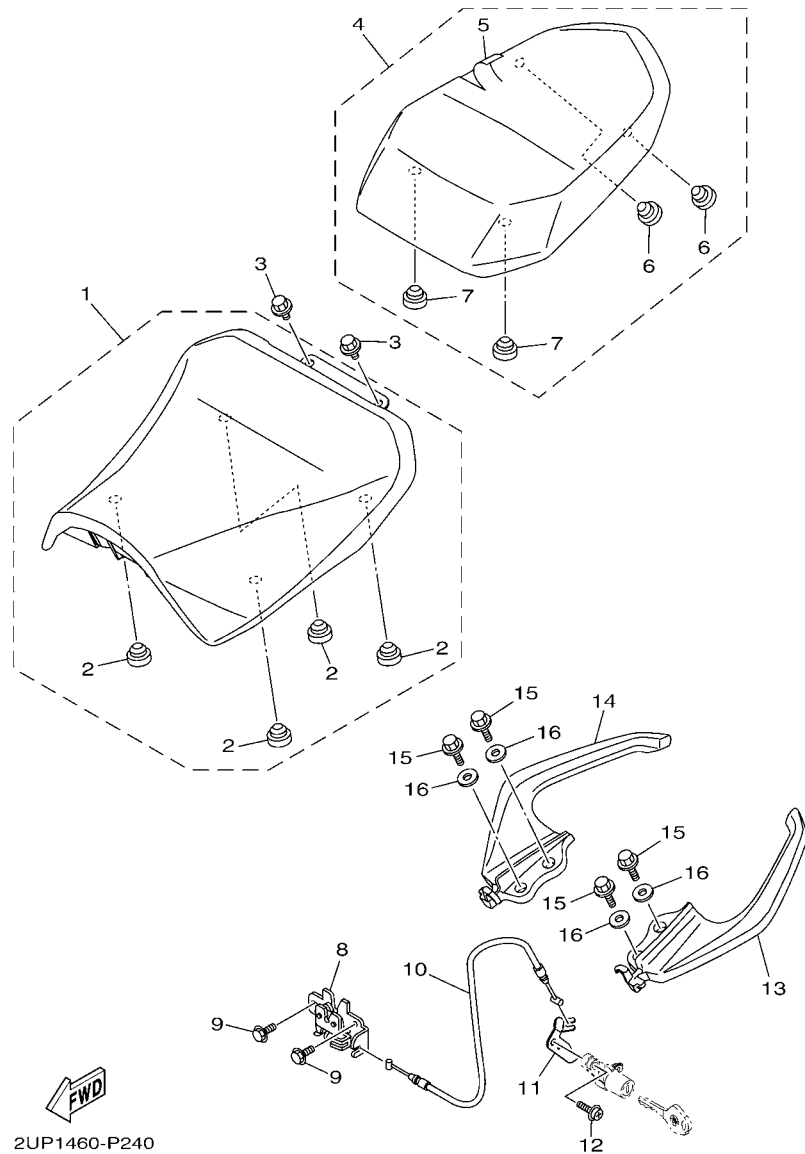
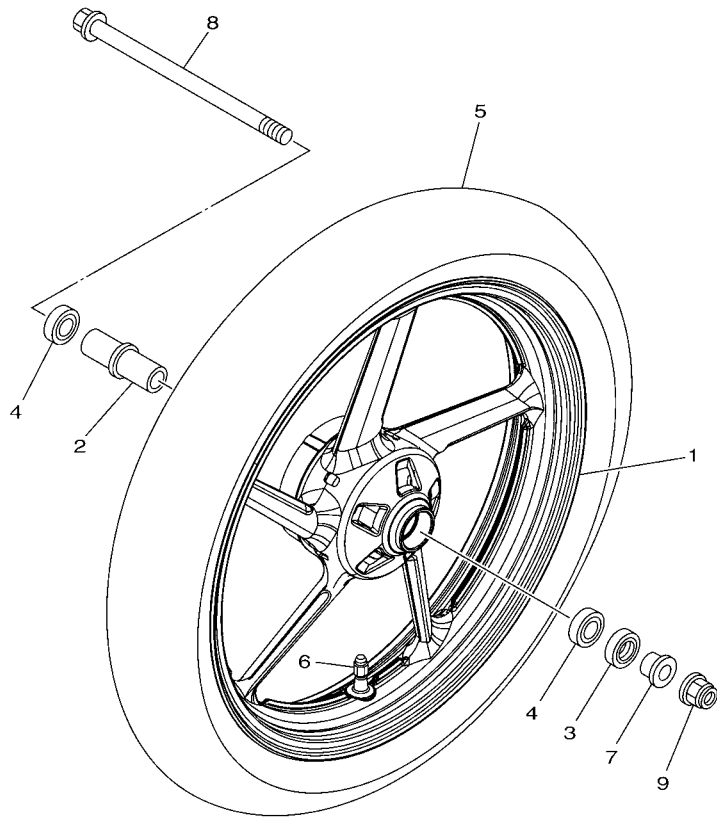


FIG. 24 SEAT

REF. NO.	PART NO.	DESCRIPTION	2UP1				REMARKS
1	2UP-F4710-00	SINGLE SEAT ASSY	1				
2	3C1-F4741-00	.PAD, SEAT	4				
3	95022-08012	BOLT, FLANGE	2				
4	2UP-F4750-00	TANDEM SEAT ASSY	1				FOR DBNM8,DBNM9
	2UP-F4750-10	TANDEM SEAT ASSY	1				FOR VYRM3
5	2UP-F4751-00	.COVER, TANDEM SEAT	1				
6	3C1-F4741-00	.PAD, SEAT	2				
7	1DY-F4741-00	.PAD, SEAT	2				
8	1DY-F4780-00	SEAT LOCK ASSY	1				
9	95022-06010	BOLT, FLANGE	2				
10	2UP-F478E-00	CABLE, SEAT LOCK	1				
11	2UP-F117K-00	STAY, LOCK	1				
12	90159-06054	SCREW, WITH WASHER	1				
13	2UP-F474A-00	ASSIST, GRIP	1				
14	2UP-F474W-00	ASSIST,GRIP 2	1				
15	95812-08025	BOLT, FLANGE	4				
16	92902-08200	WASHER	4				




 45P1460-J260

FIG. 25 FRONT WHEEL

REF. NO.	PART NO.	DESCRIPTION	ZUP1				REMARKS
1	45P-F5168-00-33	CAST WHEEL, FRONT	1				UR YB
	45P-F5168-10-33	CAST WHEEL, FRONT	1				UR YB
2	21C-F510C-10	COLLAR ASSY.	1				
3	93104-22837	OIL SEAL	1				
4	93306-252X7	BEARING	2				
5	94110-17823	TIRE (100/80-17M/C 52P RX-01F)	1				INOUE
6	93900-00828	VALVE, RIM	1				
7	21C-F5183-01	COLLAR, WHEEL	1				
8	45P-F5181-00	AXLE, WHEEL	1				
9	95602-14200	NUT, SELF-LOCKING	1				

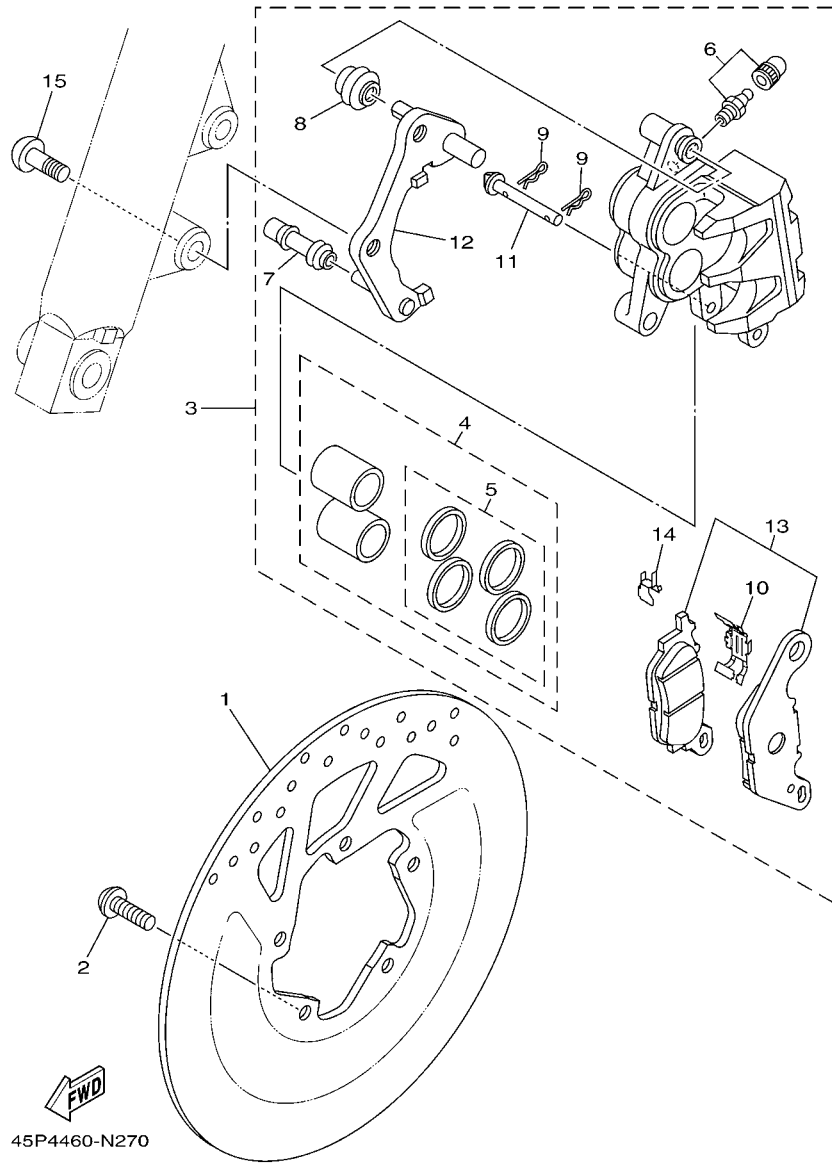


FIG. 26 FRONT BRAKE CALIPER

REF. NO.	PART NO.	DESCRIPTION	ZUP1				REMARKS
1	45P-F582U-00	DISK, BRAKE (RIGHT)	1				
2	90111-08815	BOLT,HEX. SOCKET BUTTON	5				
3	3C1-F580U-11	CALIPER ASSY (RIGHT)	1				
4	3C1-F5802-00	.PISTON ASSY, CALIPER	1				
5	3C1-F5803-50	..CALIPER SEAL KIT	1				
6	4C9-W0048-00	.BLEED SCREW KIT	1				
7	5YP-F5937-00	.BOOT 2	1				
8	5YP-F5917-00	.BOOT, CALIPER	1				
9	5YP-F5925-01	.CLIP	2				
10	5P0-F5919-00	.SUPPORT, PAD	1				
11	5YP-F5924-00	.PIN, PAD	1				
12	3C1-F5921-01	.BRACKET, SUPPORT	1				
13	3C1-F5805-10	.BRAKE PAD KIT	1				
14	5YP-F5939-00	.CLIP, PAD	1				
15	90149-10801	SCREW	2				

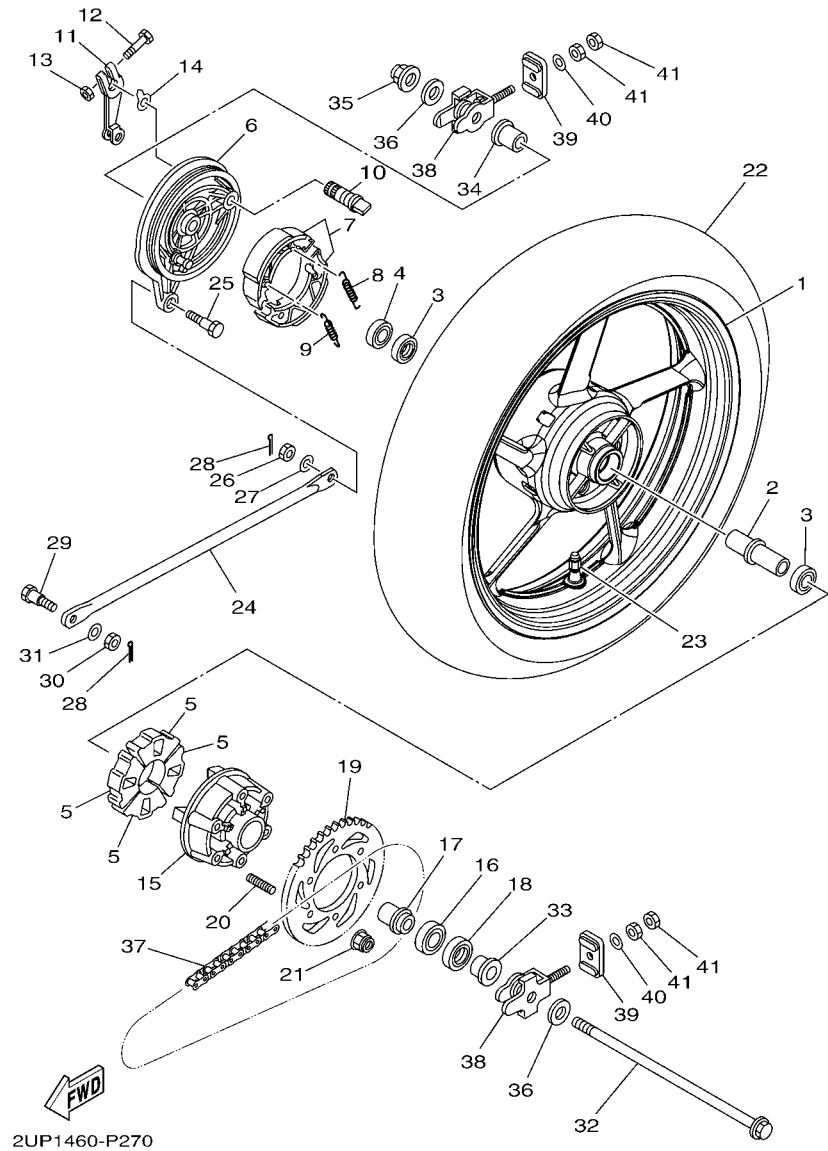


FIG. 27 REAR WHEEL

REF. NO.	PART NO.	DESCRIPTION	ZUP1			REMARKS
1	45P-F5338-00-33	CAST WHEEL, REAR	1			UR YB
	45P-F5338-10-33	CAST WHEEL, REAR	1			UR YB
2	21C-F530S-10	COLLAR ASSY	1			
3	93306-252X7	BEARING	2			
4	93104-22837	OIL SEAL	1			
5	45P-F5364-00	DAMPER	4			
6	5BP-F5321-01-33	PLATE, BRAKE SHOE	1			YB
7	1S7-F530K-00	BRAKE SHOE SET	1			
8	90506-12001	SPRING, TENSION	1			
9	90506-15001	SPRING, TENSION	1			
10	5BP-F5351-00	CAMSHAFT	1			
11	45P-F5355-00	LEVER, CAMSHAFT	1			
12	90101-06278	BOLT	1			
13	95307-06600	NUT	1			
14	4ST-F533A-00	PLATE, INDICATOR	1			
15	3C1-F5366-00-33	CLUTCH, HUB (0033,YB)	1			YB
16	93306-004XV	BEARING	1			
17	20P-F5377-00	COLLAR, WHEEL	1			
18	93106-26815	OIL SEAL	1			
19	3C1-F5442-00	SPROCKET, DRIVEN (42T)	1			
20	90116-08812	BOLT, STUD	6			
21	95602-08200	NUT, SELF-LOCKING	6			
22	94113-17810	TIRE (130/70-17M/C 62S RX-01R)	1			INOUE
23	93900-00828	VALVE, RIM	1			
24	45P-F5371-00	BAR, TENSION	1			
25	90109-08063	BOLT	1			
26	95307-08700	NUT	1			

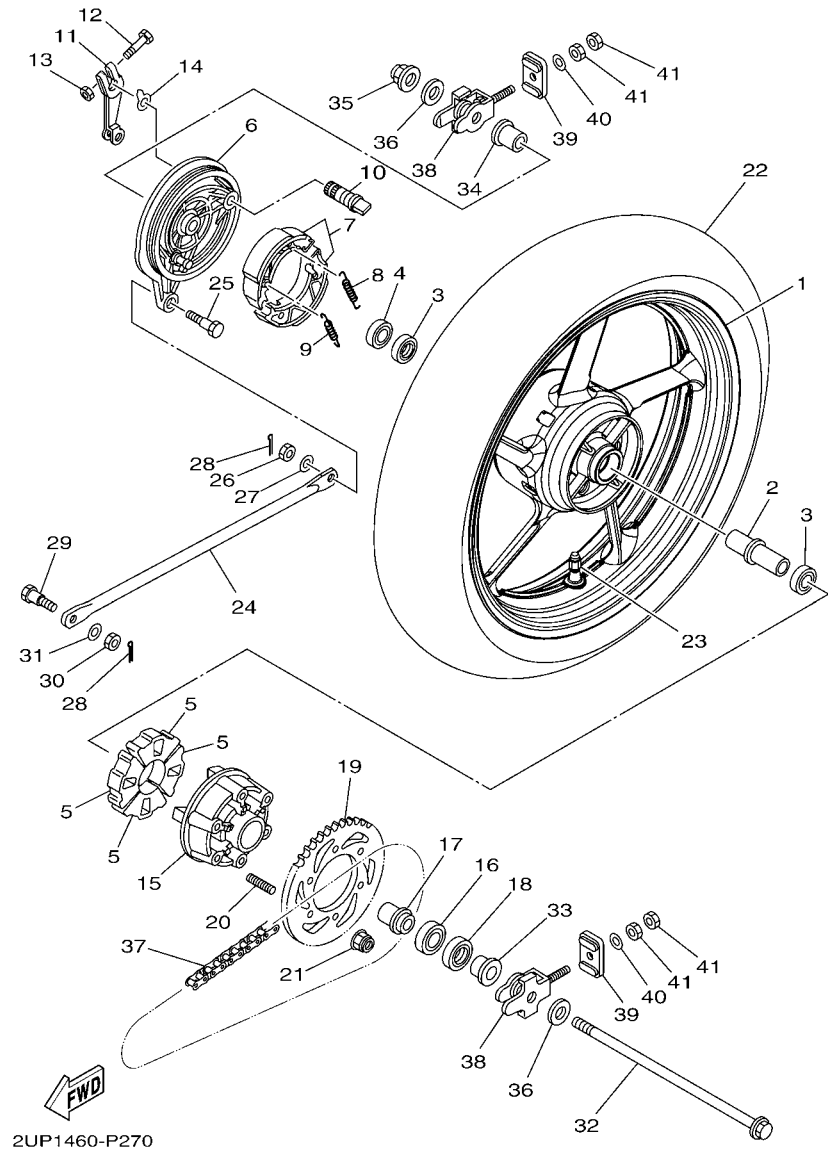
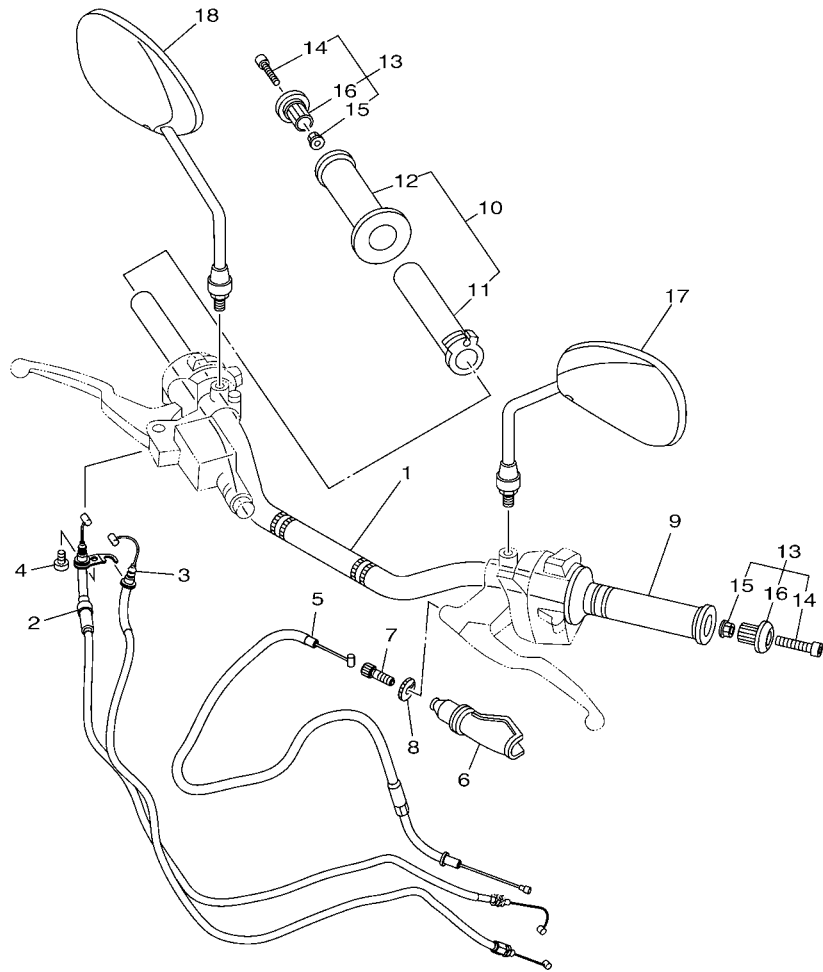


FIG. 27 REAR WHEEL

REF. NO.	PART NO.	DESCRIPTION	ZUP1				REMARKS
27	90201-08326	WASHER, PLATE	1				
28	91401-20012	PIN, COTTER	2				
29	90109-08825	BOLT	1				
30	95307-08600	NUT	1				
31	92907-08200	WASHER	1				
32	45P-F5381-00	AXLE, WHEEL	1				
33	45P-F5386-00	COLLAR, SPROCKET AXLE	1				
34	21C-F5383-10	COLLAR, WHEEL	1				
35	95602-14200	NUT, SELF-LOCKING	1				
36	90201-15026	WASHER, PLATE	2				
37	94568-B5130	CHAIN (R428NXR-130L)	1				
38	45P-F5388-00	PULLER, CHAIN 1	2				
39	45P-F2174-00	END 1	2				
40	92907-08600	WASHER, PLATE	2				
41	95307-08600	NUT	4				



2UP1460-P280

FIG. 28 STEERING HANDLE & CABLE

REF. NO.	PART NO.	DESCRIPTION	2UP1				REMARKS
1	2UP-F6111-00	HANDLEBAR	1				
2	2UP-F6311-00	CABLE, THROTTLE 1	1				
3	2UP-F6312-00	CABLE, THROTTLE 2	1				
4	98507-05012	SCREW, PAN HEAD	1				
5	45P-F6335-00	CABLE, CLUTCH	1				
6	45P-F6372-00	COVER, HANDLE LEVER 1	1				
7	90123-08046	BOLT	1				
8	90179-08148	NUT	1				
9	45P-F6241-00	GRIP	1				
10	2UP-F6240-00	GRIP ASSY	1				
11	2UP-F6243-00	.TUBE, THROTTLE GUIDE	1				
12	45P-F6242-00	.GRIP (RIGHT)	1				
13	45P-F620B-00	END GRIP ASSY	2				
14	91317-06035	.BOLT	1				
15	95707-06500	.NUT, FLANGE	1				
16	45P-F6246-00	.END, GRIP	1				
17	45P-F6280-00	REAR VIEW MIRROR ASSY (LEFT)	1				
18	45P-F6290-00	REAR VIEW MIRROR ASSY (RIGHT)	1				

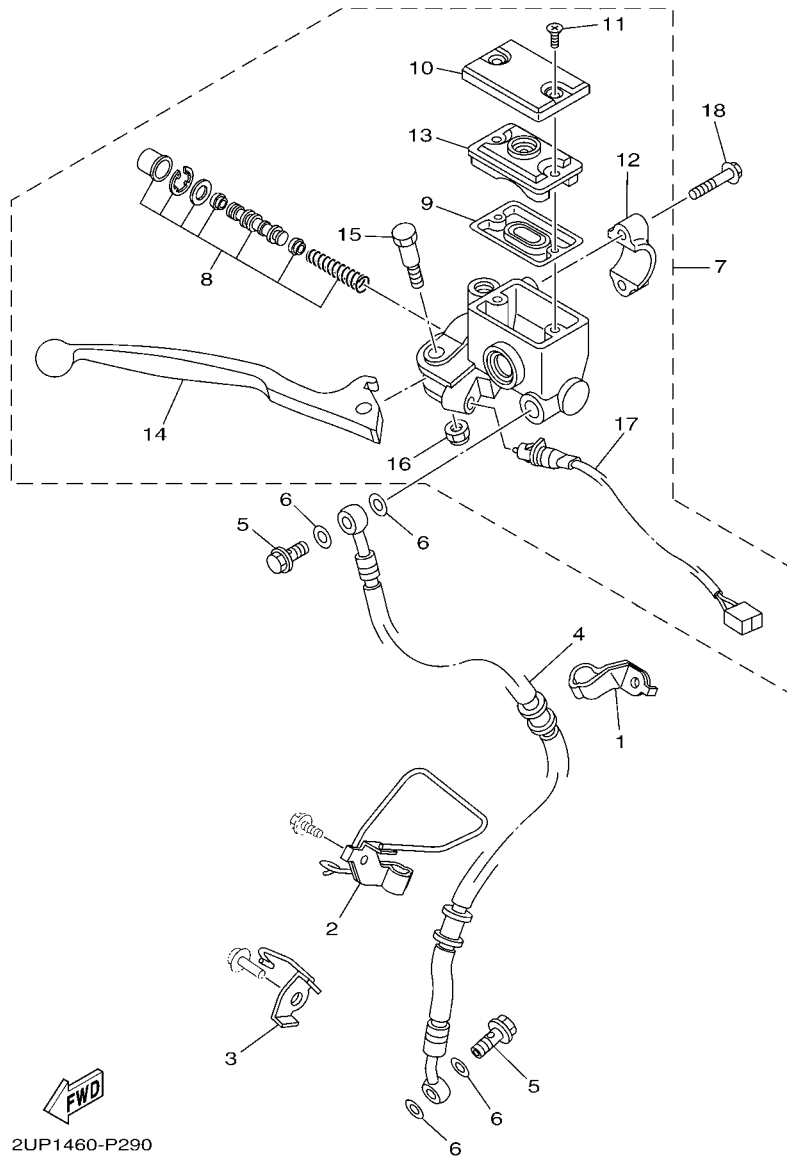
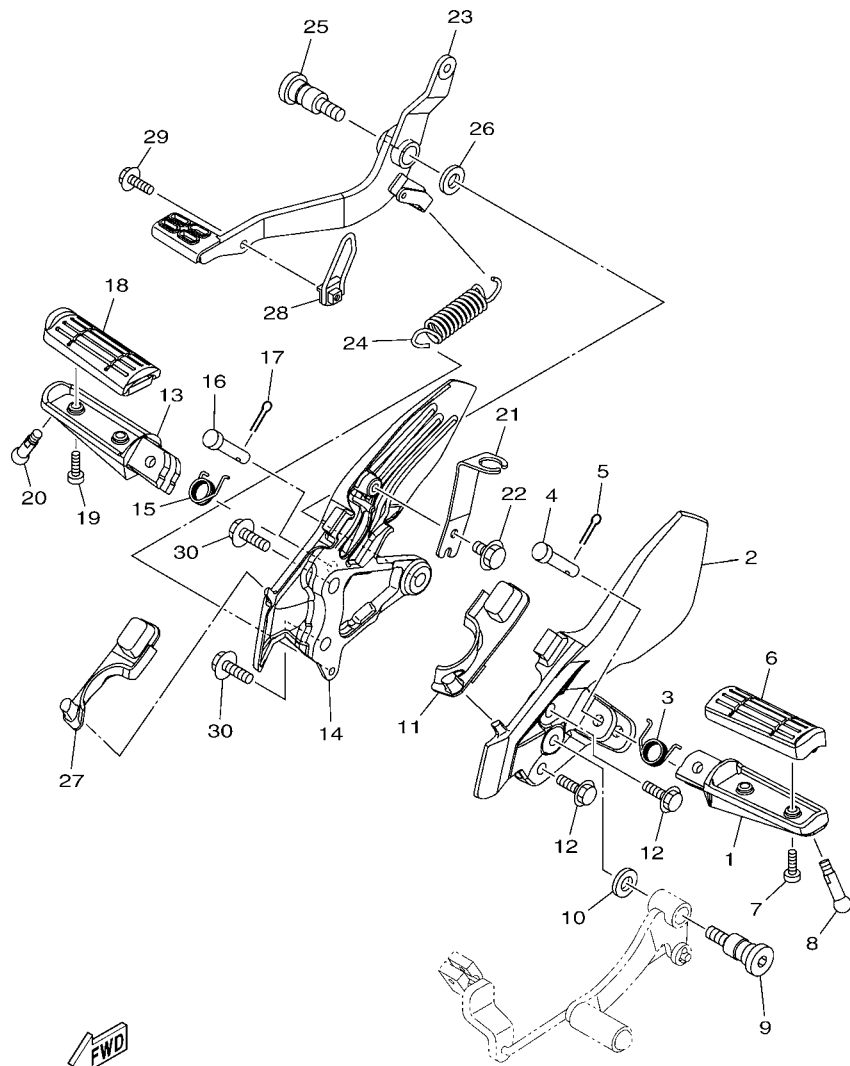


FIG. 29 FRONT MASTER CYLINDER

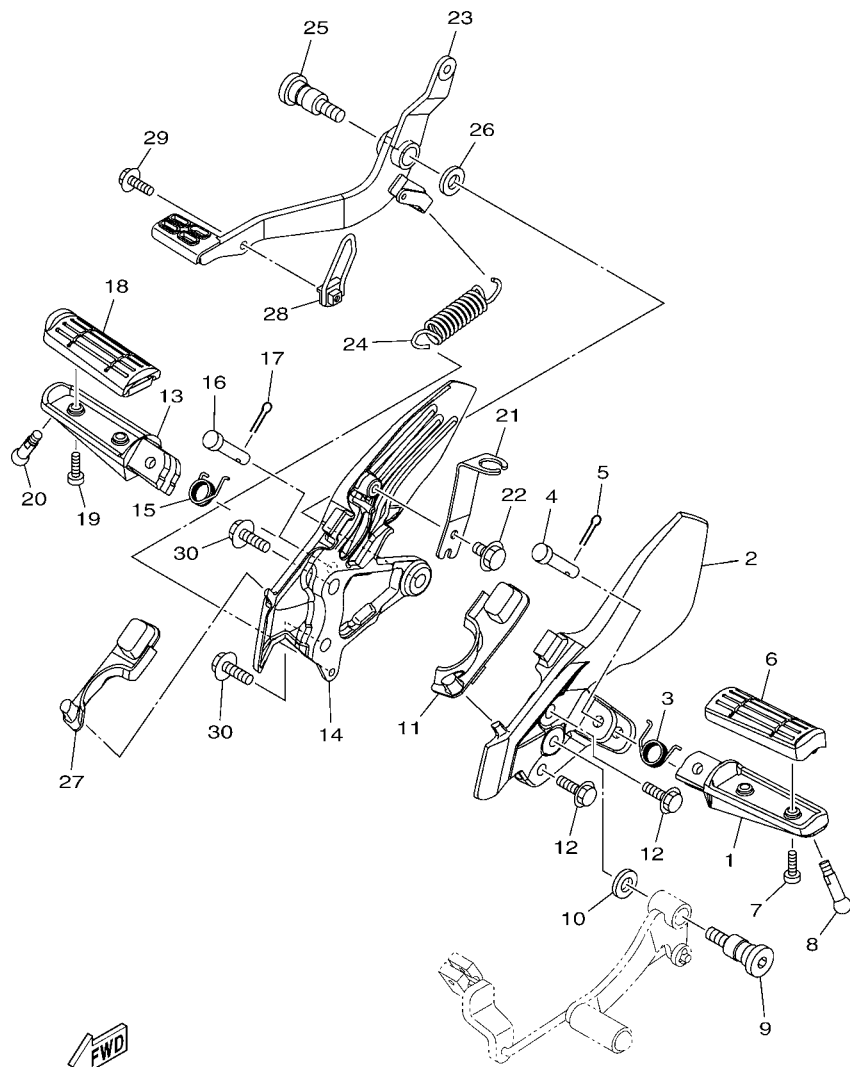
REF. NO.	PART NO.	DESCRIPTION	ZUP1				REMARKS
1	45P-F5875-00	HOLDER, BRAKE HOSE 1	1				
2	45P-F5876-00	HOLDER, BRAKE HOSE 2	1				
3	45P-F3317-00	HOLDER, CABLE	1				
4	45P-F5872-00	HOSE, BRAKE 1	1				
5	90401-10812	BOLT, UNION	2				
6	90201-10118	WASHER, PLATE	4				
7	45P-F583T-01	MASTER CYLINDER ASSY	1				
8	5P0-W0041-00	.CYLINDER KIT, MASTER	1				
9	3RW-F5854-00	.DIAPHRAGM, RESERVOIR	1				
10	3C1-F5852-00	.CAP, RESERVOIR	1				
11	36Y-2589H-00	.SCREW	2				
12	3RW-F5867-00	.BRACKET, MASTER CYLINDER	1				
13	3C1-F5855-00	.BUSH,DIAPHRAGM	1				
14	38B-H3922-00	.LEVER 2	1				
15	90109-06577	.BOLT	1				
16	95602-06100	.NUT, U	1				
17	45P-H3980-00	.FRONT STOP SWITCH ASSY	1				
18	95027-06025	BOLT, FLANGE	2				



2UP1460-P300

FIG. 30 STAND & FOOTREST

REF. NO.	PART NO.	DESCRIPTION	2UP1				REMARKS
1	45P-F7451-00	FOOTREST	1				
2	2UP-F7452-00	BRACKET, FOOTREST 1	1				
3	90508-183B9	SPRING, TORSION	1				
4	90240-08145	PIN, CLEVIS	1				
5	91401-25015	PIN, COTTER	1				
6	45P-F7413-00	COVER, FOOTREST	1				
7	98507-05014	SCREW, PAN HEAD	2				
8	90109-08202	BOLT	1				
9	45P-F7261-00	SHAFT	1				
10	90201-10021	WASHER, PLATE	1				
11	2UP-F7414-00	DAMPER, FOOTREST	1				
12	95812-08025	BOLT, FLANGE	2				
13	45P-F7461-00	FOOTREST	1				
14	2UP-F7462-00	BRACKET, FOOTREST 2	1				
15	5BP-27426-00	SPRING, RETURN	1				
16	90240-08145	PIN, CLEVIS	1				
17	91401-25015	PIN, COTTER	1				
18	45P-F7413-00	COVER, FOOTREST	1				
19	98507-05014	SCREW, PAN HEAD	2				
20	90109-08202	BOLT	1				
21	2UP-F144G-00	STAY, STOP SWITCH	1				
22	95802-06010	BOLT, FLANGE	1				
23	45P-F7211-00	PEDAL, BRAKE	1				
24	90506-26807	SPRING, TENSION	1				
25	45P-F7261-00	SHAFT	1				
26	90201-10021	WASHER, PLATE	1				
27	2UP-F7424-00	DAMPER, FOOTREST 2	1				



2UP1460-P300

FIG. 30 STAND & FOOTREST

REF. NO.	PART NO.	DESCRIPTION	ZUP1				REMARKS
28	45P-F721A-00	GUIDE, PLATE	1				
29	95812-06014	BOLT, FLANGE	1				
30	95812-08025	BOLT, FLANGE	2				

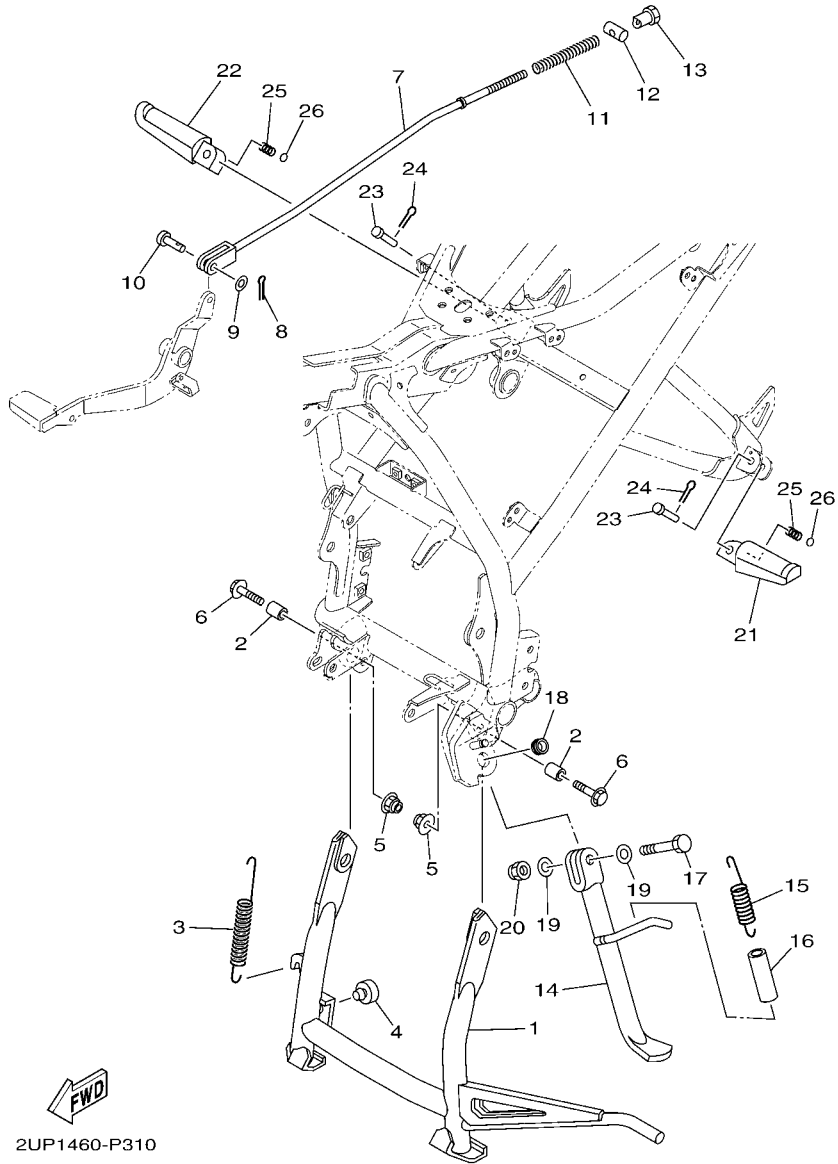
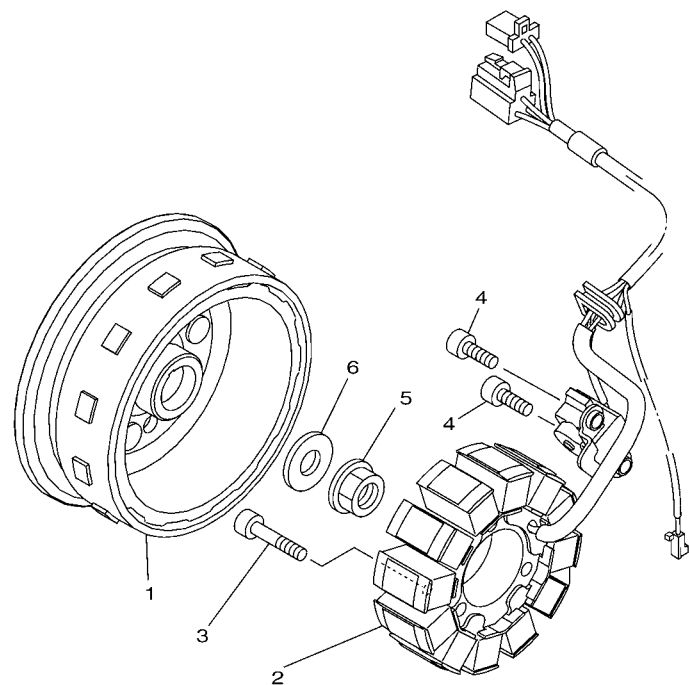


FIG. 31 STAND & FOOTREST 2

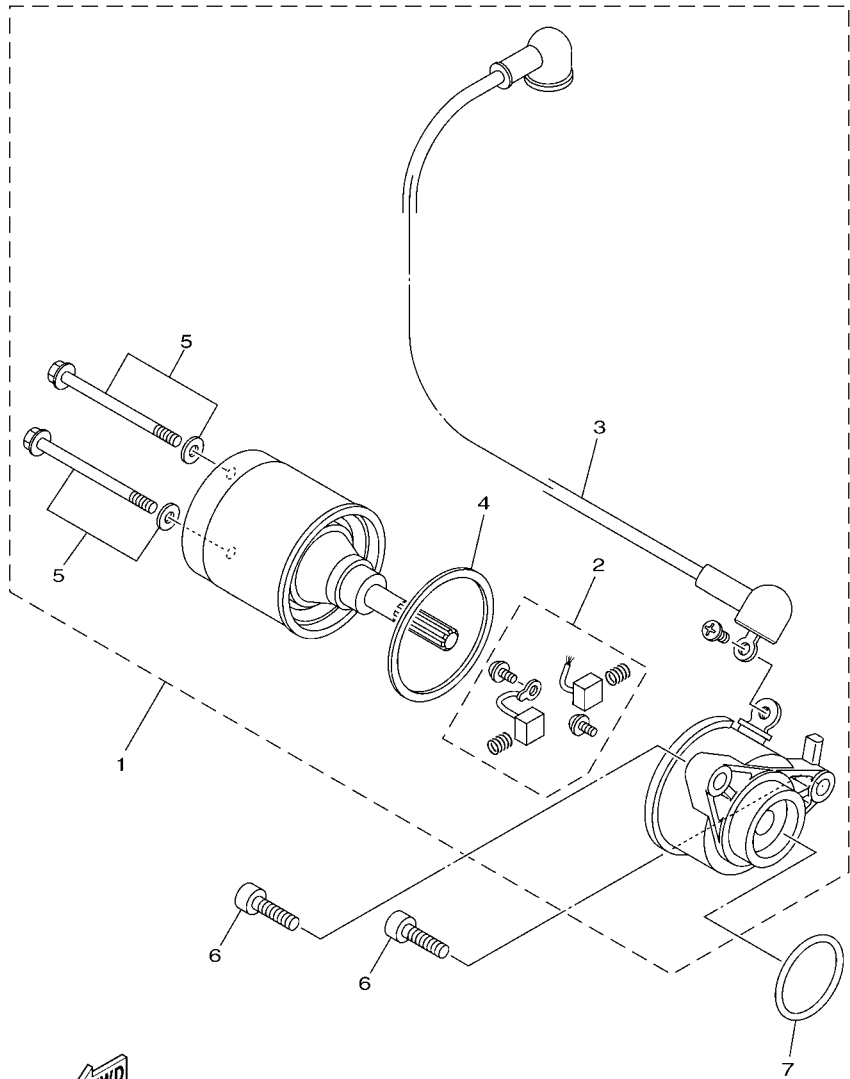
REF. NO.	PART NO.	DESCRIPTION	ZUP1				REMARKS
1	45P-F7111-00	STAND, MAIN	1				
2	90387-10821	COLLAR	2				
3	90506-35816	SPRING, TENSION	1				
4	4YY-F7114-00	STOPPER, MAIN STAND	1				
5	95602-10200	NUT, U FLANGE	2				
6	95027-10035	BOLT, FLANGE	2				
7	2UP-F7231-00	ROD, BRAKE	1				
8	91401-20012	PIN, COTTER	1				
9	92907-06200	WASHER	1				
10	90240-06804	PIN, CLEVIS	1				
11	90501-10245	SPRING, COMPRESSION	1				
12	90249-12008	PIN	1				
13	90179-06411	NUT	1				
14	45P-F7311-00	STAND, SIDE	1				
15	90506-23807	SPRING, TENSION	1				
16	90445-13804	HOSE	1				
17	90101-10006	BOLT	1				
18	90387-10003	COLLAR	1				
19	90201-10829	WASHER, PLATE	2				
20	90185-10811	NUT, SELF-LOCKING	1				
21	45P-F7431-00	FOOTREST, REAR 1	1				
22	45P-F7441-00	FOOTREST, REAR 2	1				
23	90240-08144	PIN, CLEVIS	2				
24	91401-25015	PIN, COTTER	2				
25	90501-12743	SPRING, COMPRESSION	2				
26	93501-04830	BALL	2				

FIG. 32 GENERATOR



REF. NO.	PART NO.	DESCRIPTION	ZUP1				REMARKS
1	2GS-H1450-00	ROTOR ASSY	1				
2	2GS-H1410-00	STATOR ASSY	1				
3	91312-06030	BOLT	3				
4	91312-06016	BOLT	2				
5	95707-12500	NUT, FLANGE	1				
6	90201-12019	WASHER, PLATE	1				

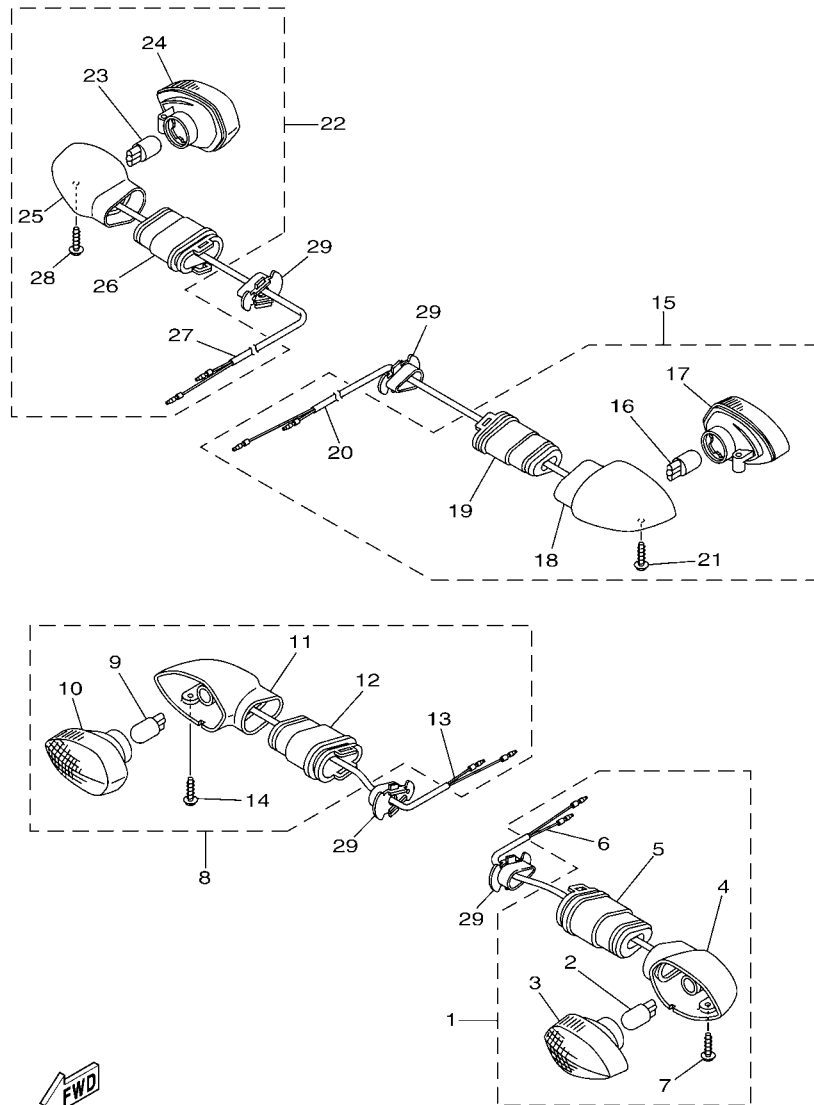
 2GS1470-P310



FWD
45P2460-L340

FIG. 33 STARTING MOTOR

REF. NO.	PART NO.	DESCRIPTION	ZUP1				REMARKS
1	2UP-H1800-00	STARTING MOTOR ASSY	1				
2	5TP-H1801-00	.BRUSH SET	1				
3	2UP-H183G-00	.CORD COMP.	1				
4	5D9-H1861-00	.GASKET	1				
5	5D9-H1828-00	.SCREW 2	2				
6	91312-06020	BOLT	2				
7	93210-29803	O-RING	1				



2UP1460-P340

FIG. 34 FLASHER LIGHT

REF. NO.	PART NO.	DESCRIPTION	ZUP1				REMARKS
1	2UP-H3310-10	FRONT FLASHER LIGHT ASSY 1	1				
2	5HV-H3311-00	.BULB (12V-10W) AMBER	1				
3	3C1-H333A-10	.LENS COMP 1	1				
4	3C1-H332M-00	.BODY 2	1				
5	3C1-H3328-00	.STAY, FLASHER 2	1				
6	2UP-H331E-00	.CORD ASSY	1				
7	97707-40012	.SCREW, TAPPING	1				
8	2UP-H3320-10	FRONT FLASHER LIGHT ASSY 2	1				
9	5HV-H3311-00	.BULB (12V-10W) AMBER	1				
10	3C1-H334A-10	.LENS COMP 2	1				
11	3C1-H3323-00	.BODY	1				
12	3C1-H3328-00	.STAY, FLASHER 2	1				
13	2UP-H332E-00	.CORD ASSY	1				
14	97707-40012	.SCREW, TAPPING	1				
15	2UP-H3330-00	REAR FLASHER LIGHT ASSY 1	1				
16	5HV-H3311-00	.BULB (12V-10W) AMBER	1				
17	3C1-H334A-10	.LENS COMP 2	1				
18	3C1-H332M-00	.BODY 2	1				
19	3C1-H3328-00	.STAY, FLASHER 2	1				
20	45P-H333E-00	.CORD ASSY	1				
21	97707-40012	.SCREW, TAPPING	1				
22	2UP-H3340-00	REAR FLASHER LIGHT ASSY 2	1				
23	5HV-H3311-00	.BULB (12V-10W) AMBER	1				
24	3C1-H333A-10	.LENS COMP 1	1				
25	3C1-H3323-00	.BODY	1				
26	3C1-H3328-00	.STAY, FLASHER 2	1				
27	45P-H334E-00	.CORD ASSY	1				

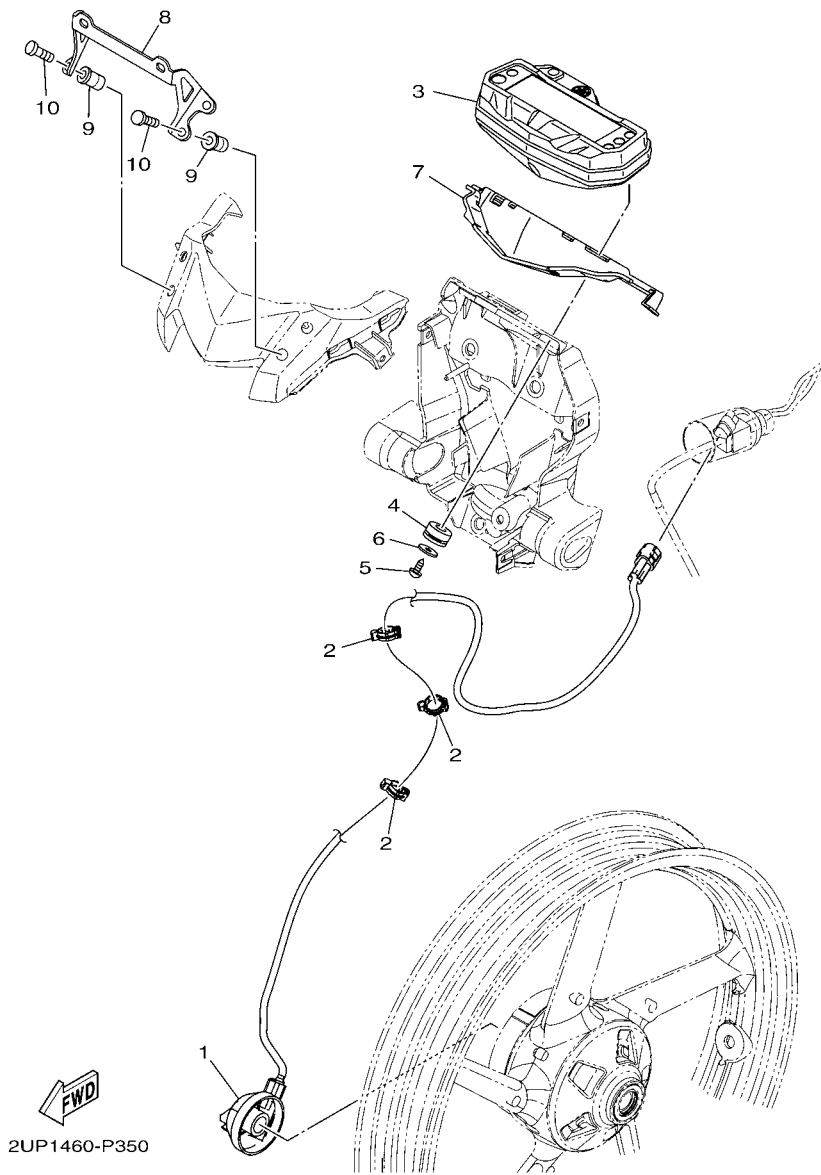
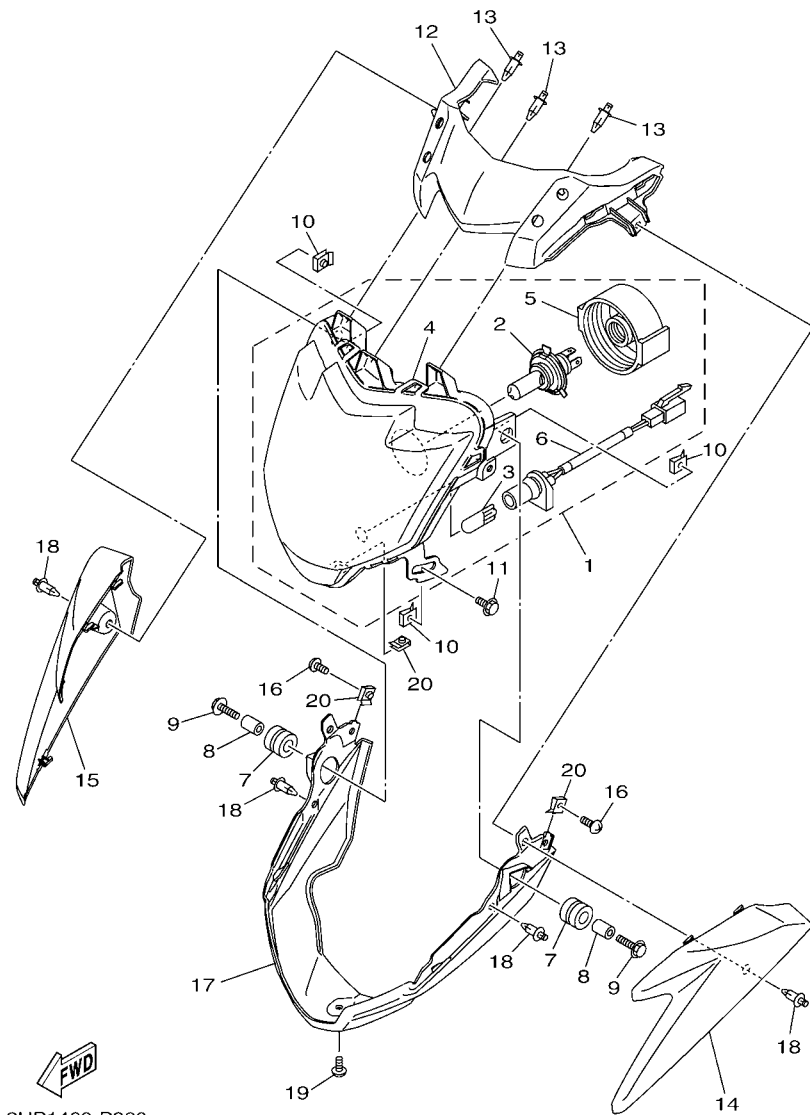


FIG. 35 METER

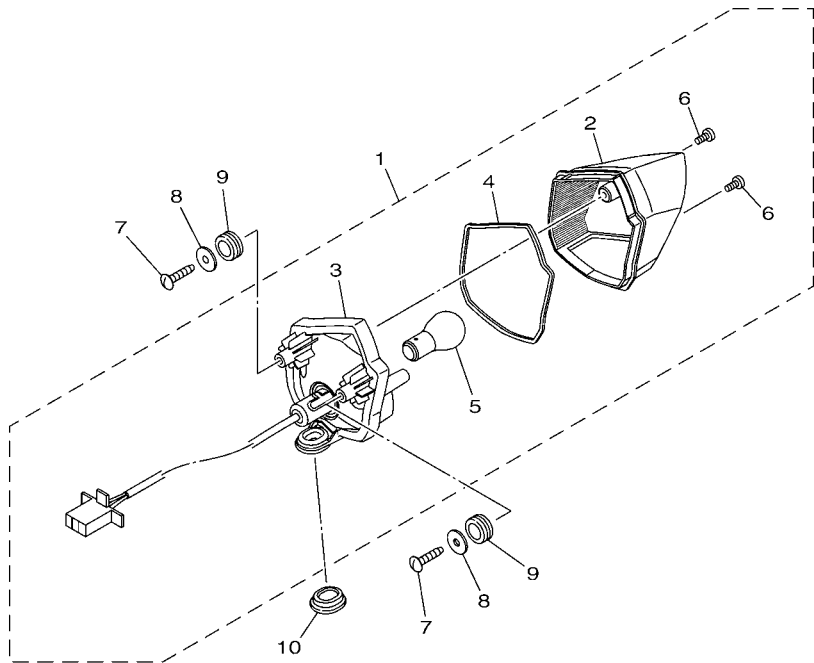
REF. NO.	PART NO.	DESCRIPTION	2UP1				REMARKS
1	45P-H3756-00	SENSOR, UNIT	1				
2	90464-14803	CLAMP	3				
3	2UP-H3500-00	METER ASSY	1				
4	90480-14818	GROMMET	3				
5	97702-50014	SCREW, TAPPING	3				
6	90201-05036	WASHER, PLATE	3				
7	2UP-H3615-00	BLIND, METER	1				
8	2UP-F3487-00	STAY, PLATE	1				
9	90179-05849	NUT	4				
10	98902-05016	SCREW, BIND	4				



2UP1460-P360

FIG. 36 HEADLIGHT

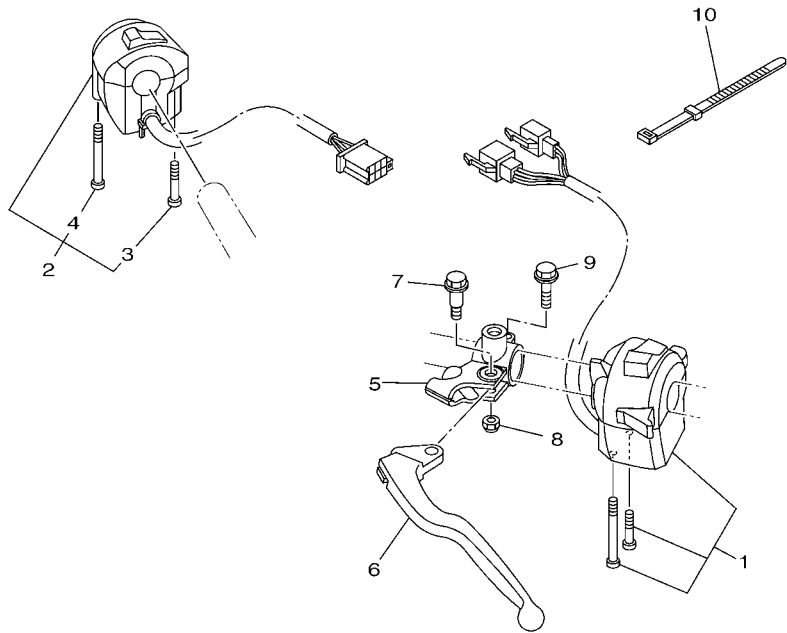
REF. NO.	PART NO.	DESCRIPTION	ZUP1				REMARKS
1	2UP-H4300-00	HEADLIGHT ASSY	1				
2	1PA-H4314-00	.BULB, HEADLIGHT (12V-35/35W)	1				
3	3C1-H4347-00	.BULB (12V-5W)	1				
4	2UP-H430A-00	.HEADLIGHT UNIT ASSY	1				
5	15C-H4397-00	.COVER, SOCKET	1				
6	45P-H4312-00	.CORD ASSY	1				
7	90480-14101	GROMMET	2				
8	90387-068D4	COLLAR	2				
9	95807-06025	BOLT, FLANGE	2				
10	90183-06821	NUT, SPRING	3				
11	95802-06012	BOLT, FLANGE	1				
12	2UP-F3121-00	COVER, UPPER 1	1				
13	90269-06816	RIVET	3				
14	2UP-F3122-00-P0	COVER, OUTER 1	1				UR FOR DBNM8
	2UP-F3122-00-P1	COVER, OUTER 1	1				UR FOR VYRM3
	2UP-F3122-00-P3	COVER, OUTER 1	1				UR FOR DBNM9
15	2UP-F3132-00-P0	COVER, OUTER 2	1				UR FOR DBNM8
	2UP-F3132-00-P1	COVER, OUTER 2	1				UR FOR VYRM3
	2UP-F3132-00-P3	COVER, OUTER 2	1				UR FOR DBNM9
16	90160-05812	SCREW, ROUND TAPPING	2				
17	2UP-F3123-00-P0	COVER, UNDER 1	1				MBL2
18	90269-06816	RIVET	4				
19	97702-50012	SCREW, TAPPING	1				
20	90183-05807	NUT, SPRING	3				



2GS1470-P360

FIG. 37 TAILLIGHT

REF. NO.	PART NO.	DESCRIPTION	ZUP1			REMARKS
1	2GS-H4710-10	TAILLIGHT UNIT ASSY	1			
2	2GS-H4721-00	.LENS, TAILLIGHT	1			
3	2GS-H4723-00	.GASKET, TAIL LENS	1			
4	1GC-H4714-00	.BULB (12V-21/5W)	1			
5	97702-40512	.SCREW, TAPPING	2			
6	97702-50025	SCREW, TAPPING	2			
7	90201-05036	WASHER, PLATE	2			
8	90480-14819	GROMMET	2			
9	90480-01558	GROMMET	1			



2UP1460-P380

FIG. 38 HANDLE SWITCH & LEVER

REF. NO.	PART NO.	DESCRIPTION	2UP1				REMARKS
1	2UP-H3972-00	SWITCH, HANDLE 4	1				
2	2UP-H3975-00	SWITCH, HANDLE 2	1				
3	45P-H2133-00	.SCREW, FITTING	1				
4	45P-H395W-00	.SCREW, SWITCH FITTING	1				
5	45P-H2911-00	HOLDER, LEVER 1	1				
6	45P-H3912-00	LEVER 1	1				
7	90109-06827	BOLT	1				
8	95602-06100	NUT, U	1				
9	95027-06025	BOLT, FLANGE	1				
10	3RS-H3936-00	BAND, SWITCH CORD	2				

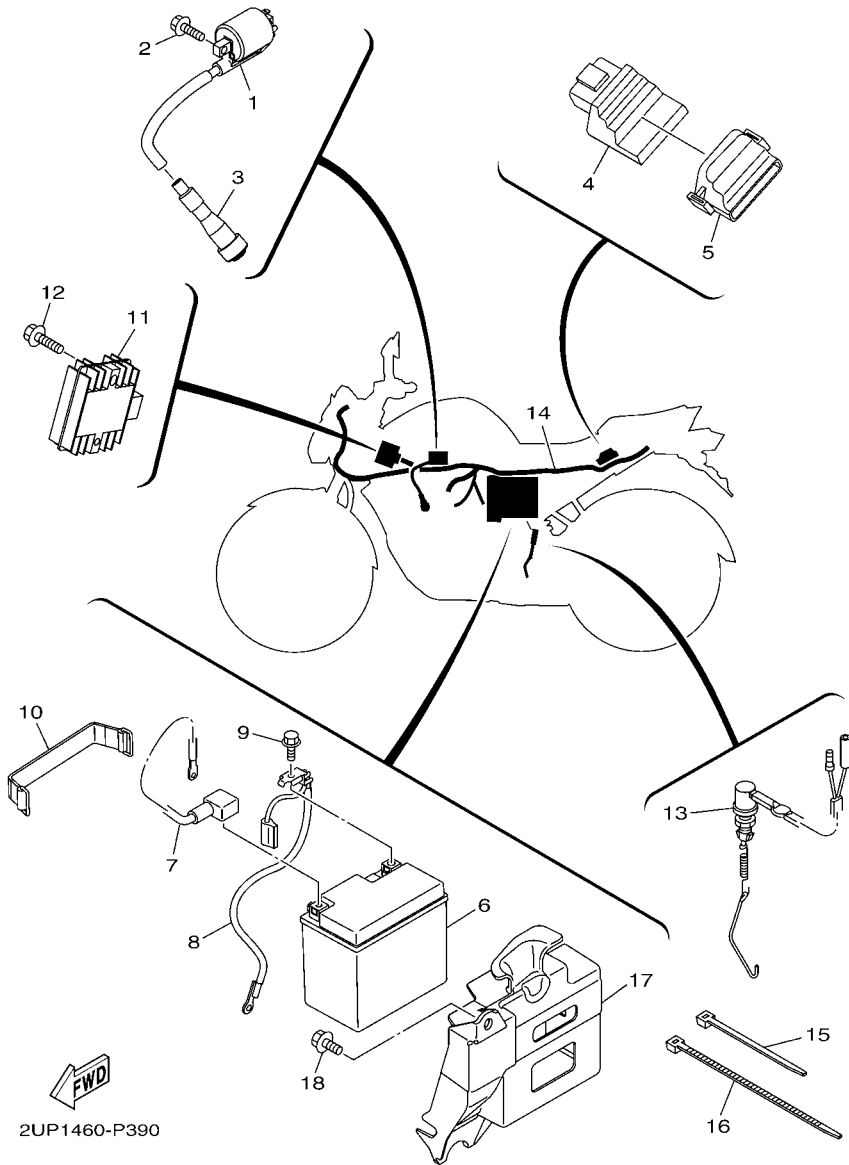


FIG. 39 ELECTRICAL 1

REF. NO.	PART NO.	DESCRIPTION	ZUP1				REMARKS
1	2UP-H2310-00	IGNITION COIL ASSY	1				
2	97507-05520	BOLT, WITH WASHER	2				
3	1S7-H2370-00	PLUG CAP ASSY	1				
4	2UP-H591A-00	ENGINE CONTROL UNIT ASSY	1				
5	2UP-H5546-00	BAND	1				
6	14D-H2100-00	BATTERY ASSY (YUASA YTZ4V)	1				UR
	14D-H2100-10	BATTERY ASSY (GS GZ4V)	1				UR
7	2UP-H2115-00	WIRE, PLUS LEAD	1				
8	2UP-H2116-00	WIRE, MINUS LEAD	1				
9	95807-06010	BOLT, FLANGE	1				
10	5MX-H2131-00	BAND, BATTERY	1				
11	2BL-H1960-00	RECTIFIER & REGULATOR ASSY	1				
12	95802-06020	BOLT, FLANGE	2				
13	45P-H2530-10	STOP SWITCH ASSY	1				
14	2UP-H2590-00	WIRE HARNESS ASSY	1				
15	90464-36800	CLAMP	4				
16	90464-70800	CLAMP	1				
17	2UP-F177G-00	BOX, BATTERY	1				
18	90119-06137	BOLT, WITH WASHER	2				

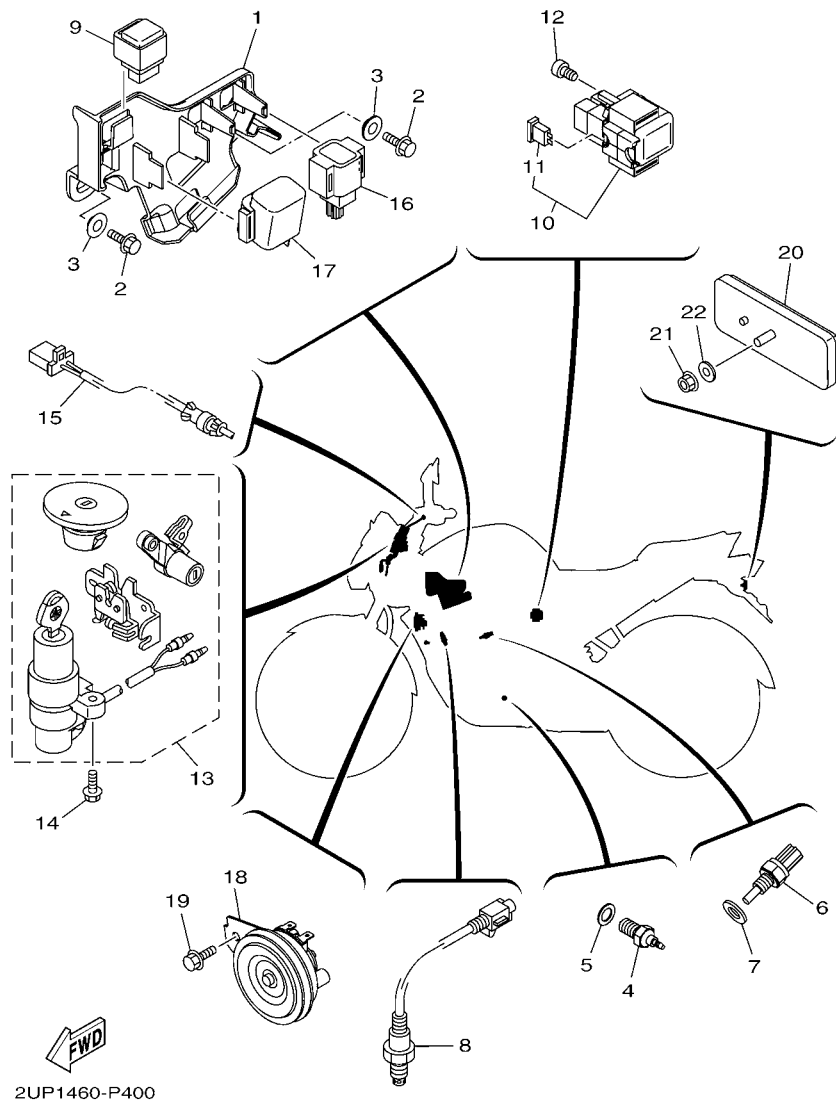


FIG. 40 ELECTRICAL 2

REF. NO.	PART NO.	DESCRIPTION	ZUP1				REMARKS
1	2UP-F418E-00	BOX 1	1				
2	95807-06014	BOLT, FLANGE	2				
3	90387-068S1	COLLAR	2				
4	54P-H3591-00	THERMO UNIT	1				
5	90430-10804	GASKET	1				
6	2DP-H592A-00	SENSOR, OXYGEN	1				
7	3C1-H2540-00	NEUTRAL SWITCH ASSY	1				
8	90430-10148	GASKET	1				
9	3C1-H1950-00	RELAY ASSY	1				
10	2UP-H1940-00	STARTER RELAY ASSY	1				
11	2UP-H2151-00	.FUSE (15A-BL)	1				
12	91312-05008	BOLT	2				
13	45P-XH250-10	MAIN SW. STRG. LOCK SUB ASSY	1				
14	95817-06016	BOLT, FLANGE	2				
15	45P-H2917-01	SWITCH	1				
16	1PA-H2576-00	SENSOR, LEAN ANGLE	1				
17	1PA-H3350-00	FLASHER RELAY ASSY	1				
18	2CB-H3371-00	HORN	1				
19	95827-06012	BOLT, FLANGE	1				
20	3C1-H5130-00	REAR REFLECTOR ASSY	1				
21	95602-05100	NUT, U	1				
22	90201-05725	WASHER, PLATE	1				

NUMERICAL INDEX

PART NO.	REF. NO.	PART NO.	REF. NO.	PART NO.	REF. NO.	PART NO.	REF. NO.	PART NO.	REF. NO.	PART NO.	REF. NO.
2GS-12159-00	3 - 10	45P-E2435-10	1 - 12	45P-E5441-00	9 - 1	1S7-E7456-00	13 - 27	2UP-F171E-00-P1	18 - 15	2UP-F3122-00-P1	36 - 14
5VC-23462-00	21 - 37	45P-E2437-00	4 - 18	45P-E5451-10	9 - 4	45P-E7471-00	13 - 10	2UP-F171E-00-P3	18 - 15	2UP-F3122-00-P3	36 - 14
36Y-2589H-00	29 - 11	21C-E2661-10	1 - 22	45P-E5461-10	9 - 18	21C-E8101-01	15 - 4	2UP-F171L-00	18 - 22	2UP-F3123-00-P0	36 - 17
5BP-27426-00	30 - 15	54B-E3300-00	5 - 1	2UP-E5514-00	10 - 1	45P-E8110-00	15 - 7	2UP-F171M-00	18 - 23	45P-F3125-00	21 - 6
2UP-E1102-00	1 - 1	45P-E3411-00	5 - 5	2UP-E5521-00	10 - 2	45P-E8112-00	15 - 8	2UP-F1721-00	18 - 5	2UP-F1721-00	21 - 23
2GS-E111F-00	4 - 6	21C-E3440-00	5 - 6	2UP-E5524-00	10 - 5	1EG-E8113-01	15 - 9	2UP-F172A-00-98	18 - 2	45P-F3126-00	21 - 3
45P-E1161-20	1 - 25	45P-E3447-00	5 - 7	1ST-E5580-00	10 - 8	45P-E8115-00	15 - 10	2UP-F172A-00-P0	18 - 2	2UP-F3132-00-P0	36 - 15
2UP-E1165-00	1 - 6	45P-E3449-00	5 - 10	4LS-E5598-00	4 - 13	21C-E8140-00	15 - 1	2UP-F172F-00-98	18 - 6	2UP-F3132-00-P1	36 - 15
2UP-E1166-00	6 - 33	54P-E3474-00	6 - 15	2UP-E5620-00	11 - 17	45P-E8337-00	15 - 3	2UP-F172F-00-P0	18 - 6	2UP-F3132-00-P3	36 - 15
45P-E1169-10	1 - 7	1PA-E3556-00	6 - 11	45P-E5641-00	11 - 2	45P-E8511-00	14 - 2	2UP-F1731-00-P0	18 - 10	45P-F3136-00	21 - 20
2UP-E1181-00	1 - 17	1LB-E3557-00	6 - 12	2UP-E5651-10	11 - 14	45P-E8512-00	14 - 3	2UP-F1731-00-P1	18 - 10	45P-F3141-00	21 - 14
2UP-E1186-00	1 - 11	2UP-E3585-00	6 - 2	2UP-E5661-00	11 - 1	45P-E8513-00	14 - 4	2UP-F1731-00-P2	18 - 10	2UP-F1731-00-P2	21 - 31
2UP-E1190-00	1 - 5	45P-E3595-00	6 - 1	2UP-E5664-00	11 - 9	21C-E8531-00	14 - 5	2UP-F1732-00	18 - 25	45P-F3144-00	21 - 10
2GS-E1193-00	1 - 9	2UP-E3635-00	6 - 14	2UP-E5665-00	11 - 10	21C-E8535-00	14 - 6	2UP-F1735-00	18 - 26	2UP-F1735-00	21 - 27
2UP-E1310-00	1 - 20	2UP-E3750-00	6 - 17	45P-E5671-00	11 - 5	2UP-E8540-00	14 - 1	2UP-F173E-00	18 - 27	45P-F3145-00	21 - 8
45P-E1351-00	1 - 21	2GS-E3761-00	6 - 6	45P-E5674-00	11 - 12	2UP-F1110-00	16 - 1	2UP-F173E-10	18 - 27	2UP-F173E-10	21 - 25
2GS-E1361-00	1 - 15	2GS-E3770-00	6 - 5	45P-E5767-00	11 - 6	2UP-F117K-00	24 - 11	2UP-F173E-20	18 - 27	45P-F3146-00	21 - 7
2UP-E1422-00	2 - 5	2UP-E3907-00	22 - 24	45P-E6111-01	12 - 1	2UP-F1279-00	16 - 14	2UP-F173F-00	18 - 28	2UP-F173F-00	21 - 24
2UP-E1454-00	2 - 13	54P-E3915-00	22 - 25	45P-E6135-00	12 - 18	2UP-F1316-00	16 - 2	2UP-F173F-10	18 - 28	45P-F3149-00	21 - 15
45P-E1496-00	2 - 15	54P-E3938-00	6 - 9	3C1-E6144-00	12 - 16	2UP-F1317-00	16 - 5	2UP-F173F-20	18 - 28	2UP-F173F-20	21 - 32
3C1-E1531-10	2 - 14	2UP-E3971-00	22 - 21	2UP-E6150-00	12 - 5	2UP-F137N-00	23 - 26	2UP-F1741-00-P0	18 - 11	45P-F3156-00	21 - 9
45P-E1536-10	2 - 12	54P-E4137-00	6 - 10	2ND-E6154-00	12 - 6	2UP-F137N-10	23 - 26	2UP-F1741-00-P1	18 - 11	2UP-F1741-00-P1	21 - 26
1ST-E1603-00	2 - 11	54P-E4147-00	6 - 7	2UP-E6321-00	12 - 8	2UP-F137N-20	23 - 26	2UP-F1741-00-P2	18 - 11	2BU-F3158-00	21 - 12
1ST-E1605-00	2 - 11	5CA-E4147-00	6 - 8	45P-E6324-00	12 - 10	2UP-F137U-00-P0	23 - 15	2UP-F174G-00	18 - 29	2UP-F174G-00	21 - 29
1ST-E1607-00	2 - 11	2UP-E4411-00	6 - 18	45P-E6331-00	12 - 9	2UP-F137U-00-P1	23 - 15	2UP-F174G-10	18 - 29	45P-F3170-00	21 - 5
2UP-E1631-00	2 - 8	2UP-E4412-00	6 - 19	45P-E6333-00	12 - 12	2UP-F137U-00-P2	23 - 15	2UP-F174G-20	18 - 29	2UP-F174G-20	21 - 22
45P-E1633-10	2 - 9	2UP-E4419-00	6 - 29	45P-E6337-00	12 - 13	2UP-F137V-00-P0	23 - 16	2UP-F174H-00	18 - 30	1WD-F3173-00	21 - 11
2UP-E1636-09	2 - 8	2UP-E4437-00	6 - 28	3C1-E6344-00	12 - 17	2UP-F137V-00-P1	23 - 16	2UP-F174H-10	18 - 30	2UP-F174H-10	21 - 28
2UP-E1638-09	2 - 8	20P-E443E-00	6 - 25	2UP-E6345-00	12 - 22	2UP-F137V-00-P2	23 - 16	2UP-F174H-20	18 - 30	2UP-F174H-20	20 - 16
1ST-E1651-00	2 - 4	2UP-E4450-00	6 - 20	45P-E6351-00	12 - 11	2UP-F144G-00	30 - 21	2UP-F177G-00	39 - 17	2UP-F317F-00	20 - 17
45P-E1681-00	2 - 2	2UP-E4452-00	6 - 22	45P-E6356-00	12 - 15	45P-F1511-00-4Y	17 - 1	2UP-F2110-00	19 - 1	45P-F317J-00	20 - 18
2UP-E2111-00	3 - 1	2UP-E4453-00	6 - 21	45P-E6357-00	12 - 23	45P-F1511-00-5Y	17 - 1	5BP-F2129-01	19 - 4	31B-F3181-00	21 - 13
2GS-E2113-00	3 - 5	1WD-E4613-00	7 - 11	2ND-E6358-00	12 - 14	45P-F1511-00-8X	17 - 1	2UP-F2141-00	19 - 3	2UP-F2141-00	21 - 30
2UP-E2117-00	3 - 7	2UP-E4703-00	7 - 1	45P-E6371-00	12 - 7	2UP-F1611-00	17 - 6	2UP-F2151-00	19 - 8	45P-F3188-00	21 - 18
3S0-E2118-00	3 - 6	2UP-E4718-00	7 - 2	21C-E6380-02	12 - 21	2UP-F1613-00	17 - 12	45P-F2174-00	27 - 39	2UP-F2174-00	21 - 35
1PA-E2119-00	3 - 3	5TP-E4747-00	7 - 10	45P-E7121-00	13 - 7	2UP-F1614-00	17 - 13	2UP-F2210-00	19 - 16	2UP-F2210-00	29 - 3
2UP-E2121-00	3 - 2		16 - 11	2UP-E7131-00	13 - 5	45P-F1638-00	16 - 13	2UP-F3100-00	21 - 1	2UP-F3100-00	21 - 36
2MS-E2126-00	3 - 4	2UP-E4757-00	7 - 8	1ST-E7141-00	13 - 2	2UP-F163A-00	17 - 15	2UP-F3102-00	21 - 2	45P-F3346-00	21 - 39
1ST-E2151-00	3 - 9	45P-E4775-00	7 - 9	2UP-E7151-00	13 - 6	45P-F1650-00	19 - 12	2UP-F3103-00	21 - 19	4FP-F3411-10	21 - 38
45P-E2156-00	3 - 12	2UP-E4799-00	7 - 3	45P-E7211-00	13 - 22	2UP-F1651-00	17 - 14	5TL-F3108-00	18 - 20	4RT-F3411-10	20 - 2
52S-E2169-10	3 - 8	2UP-E4877-00	6 - 23	45P-E7221-00	13 - 13	1WD-F1668-00	19 - 15	2UP-F3110-00	21 - 4	1KL-F3412-10	20 - 1
2UP-E2170-00	4 - 1	2UP-E5150-00	8 - 1	45P-E7231-00	13 - 17	2UP-F1711-00	18 - 1		21 - 21	4RT-F3412-10	20 - 3
45P-E2210-01	4 - 15	45P-E5155-00	8 - 2	2UP-E7241-00	13 - 19	45P-F1717-00	16 - 16	2UP-F3111-00	21 - 17	5TL-F3416-00	20 - 6
5MX-E2213-01	4 - 16	45P-E5353-10	9 - 5	2UP-E7251-00	13 - 16		18 - 9		21 - 34	5BP-F3418-00	20 - 8
45P-E2231-00	4 - 11	45P-E5362-00	9 - 21	45P-E7258-00	13 - 21	2UP-F171A-00-98	22 - 15	1WD-F3118-00	21 - 16	1P6-F341E-10	20 - 5
2GS-E2241-00	4 - 12	2UP-E5411-00	9 - 3	45P-E7402-00	13 - 12	2UP-F171A-00-P0	22 - 15		21 - 33	5VL-F341E-10	20 - 4
2GS-E2280-00	4 - 7	2UP-E5418-00	9 - 13	2UP-E7411-00	13 - 1	2UP-F171A-00-P1	22 - 15	2UP-F3121-00	36 - 12	45P-F3435-10	20 - 10
2UP-E2288-00	4 - 8	45P-E5421-00	9 - 17	45P-E7411-00	13 - 1	2UP-F171E-00-P0	18 - 15	2UP-F3122-00-P0	36 - 14	2UP-F3438-00	20 - 13

NUMERICAL INDEX

PART NO.	REF. NO.	PART NO.	REF. NO.	PART NO.	REF. NO.	PART NO.	REF. NO.	PART NO.	REF. NO.	PART NO.	REF. NO.
45P-F3441-10	20 - 14	2UP-F478E-00	24 - 10	2UP-F6243-00	28 - 11	1S7-H2370-00	39 - 3	1PA-H4314-00	36 - 2	90160-05812	23 - 5
2UP-F3487-00	35 - 8	21C-F510C-10	25 - 2	45P-F6246-00	28 - 16	45P-H2530-10	39 - 13	3C1-H4347-00	36 - 3		36 - 16
2UP-F4110-00	22 - 1	45P-F5168-00-33	25 - 1	45P-F6280-00	28 - 17	3C1-H2540-00	40 - 7	15C-H4397-00	36 - 5	90170-05302	3 - 11
2UP-F411G-00	23 - 8	45P-F5168-10-33	25 - 1	45P-F6290-00	28 - 18	1PA-H2576-00	40 - 16	2GS-H4710-10	37 - 1	90170-10012	2 - 25
2UP-F411H-00	23 - 9	45P-F5181-00	25 - 8	2UP-F6311-00	28 - 2	2UP-H2590-00	39 - 14	1GC-H4714-00	37 - 4	90179-05849	22 - 20
2UP-F4124-00	23 - 12	21C-F5183-01	25 - 7	2UP-F6312-00	28 - 3	45P-H2911-00	38 - 5	2GS-H4721-00	37 - 2		35 - 9
2UP-F4129-00-P0	23 - 1	1S7-F530K-00	27 - 7	45P-F6335-00	28 - 5	45P-H2917-01	40 - 15	2GS-H4723-00	37 - 3	90179-06411	31 - 13
2UP-F4129-00-P1	23 - 1	21C-F530S-10	27 - 2	45P-F6372-00	28 - 6	2UP-H3310-10	34 - 1	3C1-H5130-00	40 - 20	90179-08148	28 - 8
2UP-F4139-00-P0	23 - 2	5BP-F5321-01-33	27 - 6	45P-F7111-00	31 - 1	5HV-H3311-00	34 - 2	2UP-H5546-00	39 - 5	90179-08818	16 - 8
2UP-F4139-00-P1	23 - 2	45P-F5338-00-33	27 - 1	4YY-F7114-00	31 - 4		34 - 9	2UP-H5752-00	22 - 26	90179-10811	16 - 4
40D-F413B-00	23 - 23	45P-F5338-10-33	27 - 1	45P-F7211-00	30 - 23		34 - 16	2UP-H591A-00	39 - 4	90179-12659	11 - 18
2UP-F414A-00	22 - 16	4ST-F533A-00	27 - 14	45P-F721A-00	30 - 28		34 - 23	2DP-H592A-00	40 - 6	90179-12802	12 - 4
5D9-F414G-00	16 - 17	5BP-F5351-00	27 - 10	2UP-F7231-00	31 - 7	3C1-H3318-00	34 - 29	5P0-W0041-00	29 - 8	90179-14001	12 - 19
54P-F414G-10	22 - 28	45P-F5355-00	27 - 11	45P-F7261-00	30 - 9	2UP-H331E-00	34 - 6	4C9-W0048-00	26 - 6	90179-22025	20 - 12
45P-F4181-00	22 - 2	45P-F5364-00	27 - 5		30 - 25	2UP-H3320-10	34 - 8	2UP-WE140-00	2 - 1	90179-25615	20 - 7
45P-F4183-00	22 - 4	3C1-F5366-00-33	27 - 15	45P-F7311-00	31 - 14	3C1-H3323-00	34 - 11	45P-XH250-10	40 - 13	90183-05067	18 - 24
45P-F4188-00	22 - 14	45P-F5371-00	27 - 24	45P-F7413-00	30 - 6		34 - 25	90101-06278	27 - 12		23 - 21
2UP-F418E-00	40 - 1	20P-F5377-00	27 - 17		30 - 18	3C1-H3328-00	34 - 5	90101-10006	31 - 17	90183-05807	18 - 3
2UP-F4191-00	22 - 8	45P-F5381-00	27 - 32	2UP-F7414-00	30 - 11		34 - 12	90105-06169	22 - 12		18 - 7
2UP-F4244-00	23 - 27	21C-F5383-10	27 - 34	2UP-F7424-00	30 - 27		34 - 19	90105-08002	16 - 6		18 - 12
2UP-F4244-10	23 - 27	45P-F5386-00	27 - 33	45P-F7431-00	31 - 21		34 - 26	90105-08196	4 - 9		23 - 7
2UP-F4244-20	23 - 27	45P-F5388-00	27 - 38	45P-F7441-00	31 - 22	2UP-H332E-00	34 - 13	90105-10079	16 - 10		23 - 18
2UP-F4245-00	23 - 28	3C1-F5442-00	27 - 19	45P-F7451-00	30 - 1	3C1-H332M-00	34 - 4	90105-12660	19 - 18		36 - 20
2UP-F4245-10	23 - 28	3C1-F5802-00	26 - 4	2UP-F7452-00	30 - 2		34 - 18	90105-12804	19 - 19	90183-06821	17 - 17
2UP-F4245-20	23 - 28	3C1-F5803-50	26 - 5	45P-F7461-00	30 - 13	2UP-H3330-00	34 - 15	90109-06279	15 - 2		36 - 10
2UP-F4246-00	23 - 24	3C1-F5805-10	26 - 13	2UP-F7462-00	30 - 14	3C1-H333A-10	34 - 3	90109-06577	29 - 15	90185-10811	31 - 20
2UP-F4246-10	23 - 24	3C1-F580U-11	26 - 3	45P-F8100-00	16 - 18		34 - 24	90109-06827	38 - 7	90201-05036	35 - 6
2UP-F4246-20	23 - 24	45P-F582U-00	26 - 1	2UP-F837N-00	23 - 19	45P-H333E-00	34 - 20	90109-08063	27 - 25		37 - 7
2UP-F4254-00	22 - 30	45P-F583T-01	29 - 7	2UP-F837R-00	23 - 20	2UP-H3340-00	34 - 22	90109-08202	30 - 8	90201-05725	40 - 22
2UP-F4254-10	22 - 30	3C1-F5852-00	29 - 10	2GS-H1410-00	32 - 2	3C1-H334A-10	34 - 10		30 - 20	90201-05820	1 - 23
2UP-F4254-20	22 - 30	3RW-F5854-00	29 - 9	2GS-H1450-00	32 - 1		34 - 17	90109-08825	27 - 29	90201-06055	18 - 19
2UP-F4256-00	23 - 25	3C1-F5855-00	29 - 13	2UP-H1800-00	33 - 1	45P-H334E-00	34 - 27	90110-06256	1 - 24	90201-060A3	19 - 10
2UP-F4256-10	23 - 25	3RW-F5867-00	29 - 12	5TP-H1801-00	33 - 2	1PA-H3350-00	40 - 17	90110-06304	1 - 19		22 - 9
2UP-F4256-20	23 - 25	45P-F5872-00	29 - 4	5D9-H1828-00	33 - 5	2CB-H3371-00	40 - 18	90110-06393	4 - 17	90201-06380	22 - 10
2UP-F4364-00	22 - 22	45P-F5875-00	29 - 1	2UP-H183G-00	33 - 3	2UP-H3500-00	35 - 3	90111-05808	5 - 2	90201-06871	15 - 13
2UP-F4491-00	22 - 27	45P-F5876-00	29 - 2	5D9-H1861-00	33 - 4	54P-H3591-00	40 - 4	90111-06117	17 - 5	90201-08326	27 - 27
45P-F4614-00-P0	22 - 18	5YP-F5917-00	26 - 8	2UP-H1940-00	40 - 10	2UP-H3615-00	35 - 7	90111-06807	7 - 7	90201-08612	7 - 13
2UP-F4710-00	24 - 1	5P0-F5919-00	26 - 10	3C1-H1950-00	40 - 9	45P-H3756-00	35 - 1	90111-06826	7 - 6	90201-087F0	7 - 17
1DY-F4741-00	24 - 7	3C1-F5921-01	26 - 12	2BL-H1960-00	39 - 11	45P-H3912-00	38 - 6	90111-08815	26 - 2	90201-10021	30 - 10
3C1-F4741-00	16 - 15	5YP-F5924-00	26 - 11	14D-H2100-00	39 - 6	38B-H3922-00	29 - 14	90116-08812	27 - 20		30 - 26
	24 - 2	5YP-F5925-01	26 - 9	14D-H2100-10	39 - 6	3RS-H3936-00	38 - 10	90119-06137	18 - 17	90201-10118	29 - 6
	24 - 6	5YP-F5937-00	26 - 7	2UP-H2115-00	39 - 7	45P-H395W-00	38 - 4		39 - 18	90201-105E8	10 - 3
2UP-F474A-00	24 - 13	5YP-F5939-00	26 - 14	2UP-H2116-00	39 - 8	2UP-H3972-00	38 - 1	90123-08046	28 - 7	90201-10829	31 - 19
2UP-F474W-00	24 - 14	2UP-F6111-00	28 - 1	4ST-H2131-00	17 - 11	2UP-H3975-00	38 - 2	90149-06829	4 - 14	90201-12019	12 - 3
2UP-F4750-00	24 - 4	45P-F620B-00	28 - 13	5MX-H2131-00	39 - 10	45P-H3980-00	29 - 17		17 - 16		32 - 6
2UP-F4750-10	24 - 4	2UP-F6240-00	28 - 10	45P-H2133-00	38 - 3	2UP-H4300-00	36 - 1	90149-10801	26 - 15	90201-12028	19 - 7
2UP-F4751-00	24 - 5	45P-F6241-00	28 - 9	2UP-H2151-00	40 - 11	2UP-H430A-00	36 - 4	90159-05065	22 - 19	90201-122H1	19 - 21
1DY-F4780-00	24 - 8	45P-F6242-00	28 - 12	2UP-H2310-00	39 - 1	45P-H4312-00	36 - 6	90159-06054	24 - 12	90201-15026	27 - 36

NUMERICAL INDEX

PART NO.	REF. NO.	PART NO.	REF. NO.	PART NO.	REF. NO.	PART NO.	REF. NO.	PART NO.	REF. NO.	PART NO.	REF. NO.
90201-15821	2 - 16	90387-10821	31 - 2	91312-06020	33 - 6	93306-906Y4	4 - 2	95602-08200	27 - 21	97702-50012	18 - 8
90201-162H4	11 - 11	90387-12845	19 - 17	91312-06025	6 - 3	93310-325X3	10 - 6	95602-10200	31 - 5		18 - 13
90201-167P7	11 - 7	90387-12863	19 - 2	91312-06030	32 - 3	93310-628X0	2 - 3	95602-14200	25 - 9		22 - 23
90201-177G4	11 - 15	90387-155J0	2 - 20	91317-05010	1 - 8	93315-112Y9	12 - 25		27 - 35		23 - 17
	13 - 20	90401-10812	29 - 5	91317-06014	9 - 2	93317-218Y1	19 - 5	95607-12200	19 - 6		23 - 22
90201-20685	11 - 3	90430-06014	1 - 3	91317-06016	11 - 13	93410-20038	11 - 4	95612-08635	1 - 4		36 - 19
90201-22793	13 - 14		1 - 14	91317-06020	10 - 9		13 - 4	95612-12100	19 - 20	97702-50014	35 - 5
90201-25290	10 - 7	90430-10148	40 - 8	91317-06035	28 - 14	93410-22039	13 - 15	95702-08500	7 - 12	97702-50025	37 - 6
90202-05180	23 - 6	90430-10804	40 - 5	91401-20012	15 - 11	93450-16068	2 - 10	95707-06500	28 - 15	97707-40012	34 - 7
90202-26142	20 - 9	90430-12227	5 - 4		27 - 28	93501-04830	31 - 26	95707-12500	32 - 5		34 - 14
90208-20003	12 - 20	90445-13804	31 - 16		31 - 8	93505-16844	12 - 24	95802-06010	30 - 22		34 - 21
90209-17285	13 - 3	90445-14808	22 - 17	91401-25015	30 - 5	93604-08800	2 - 19	95802-06012	23 - 11		34 - 28
90209-18208	13 - 18	90450-48803	6 - 16		30 - 17	93605-06800	4 - 4		36 - 11	98502-06014	18 - 18
90214-10800	2 - 17	90464-14803	35 - 2		31 - 24	93608-43238	15 - 5	95802-06020	17 - 4	98507-05012	28 - 4
90215-10284	2 - 24	90464-36800	39 - 15	91810-14809	1 - 18	93822-14800	13 - 26		39 - 12	98507-05014	30 - 7
90240-06804	31 - 10	90464-70800	22 - 5		8 - 3	93900-00828	25 - 6	95807-06010	39 - 9		30 - 19
90240-08144	31 - 23		39 - 16		9 - 6		27 - 23	95807-06014	40 - 2	98517-06012	13 - 11
90240-08145	30 - 4	90467-12800	6 - 26		9 - 19	94110-17823	25 - 5	95807-06020	9 - 14	98902-05016	35 - 10
	30 - 16	90467-13808	6 - 35	92902-08200	24 - 16	94113-17810	27 - 22	95807-06025	36 - 9	99009-10400	10 - 4
90249-12008	31 - 12	90467-15802	6 - 34	92907-06200	15 - 12	94568-B5130	27 - 37	95807-08025	7 - 14	99009-16400	11 - 8
90269-06816	18 - 14	90467-20050	6 - 24		31 - 9	94568-G7096	4 - 10	95807-08035	7 - 15	99009-17400	11 - 16
	18 - 16	90480-01558	18 - 21	92907-08200	27 - 31	94700-00867	1 - 16	95812-06014	30 - 29	99009-20500	12 - 27
	36 - 13		37 - 9	92907-08600	27 - 40	95022-06010	24 - 9	95812-06030	6 - 13		
	36 - 18	90480-01559	23 - 4	93101-10843	9 - 23	95022-06012	1 - 2	95812-08016	16 - 7		
90280-03017	2 - 7	90480-12812	7 - 4	93101-12804	15 - 6	95022-06025	1 - 10	95812-08025	24 - 15		
90282-05031	2 - 23		9 - 16	93102-12862	12 - 26		1 - 13		30 - 12		
90282-05077	12 - 2	90480-12815	17 - 3	93102-22827	13 - 25	95022-08012	24 - 3		30 - 30		
90340-12097	5 - 3	90480-13398	23 - 3	93104-22837	25 - 3	95022-08035	20 - 15	95812-08040	7 - 16		
90340-14826	9 - 9	90480-14101	36 - 7		27 - 4	95022-08040	20 - 11	95817-06016	40 - 14		
90340-32827	9 - 11	90480-14818	35 - 4	93106-26815	27 - 18	95027-06010	13 - 28	95817-10080	16 - 3		
90387-06023	7 - 5	90480-14819	37 - 8	93109-20800	11 - 19	95027-06020	5 - 8	95817-10130	16 - 9		
90387-06048	17 - 8	90480-14828	23 - 10	93210-12801	4 - 3	95027-06025	29 - 18	95822-06012	20 - 21		
	17 - 19	90480-15363	22 - 3	93210-14899	9 - 10		38 - 9	95822-06016	17 - 9		
	23 - 13	90501-06800	14 - 7	93210-19809	9 - 22	95027-06040	9 - 7		20 - 19		
90387-066J9	19 - 9	90501-10245	31 - 11	93210-29803	33 - 7		9 - 20	95822-06030	22 - 13		
90387-06737	6 - 30	90501-12743	31 - 25	93210-30611	6 - 4	95027-06045	8 - 5	95827-06012	23 - 14		
90387-068B2	22 - 6	90501-16800	2 - 18	93210-328A4	9 - 12	95027-06050	9 - 8		40 - 19		
90387-068C5	17 - 2	90506-12001	27 - 8	93306-002YW	4 - 5	95027-06055	8 - 4	95827-06014	19 - 14		
90387-068C9	9 - 15	90506-15001	27 - 9	93306-004XV	27 - 16	95027-06065	5 - 9	95827-06016	6 - 32		
90387-068D4	36 - 8	90506-23807	31 - 15	93306-054YG	13 - 8	95027-06070	8 - 6	97012-06020	15 - 14		
90387-068S1	19 - 13	90506-26807	30 - 24	93306-201YF	13 - 9	95027-10035	31 - 6	97017-06014	17 - 7		
	40 - 3	90506-35816	31 - 3	93306-252X7	25 - 4	95307-06600	27 - 13		17 - 18		
90387-07819	20 - 20	90508-183B9	30 - 3		27 - 3	95307-08600	27 - 30	97027-06014	22 - 11		
90387-08079	17 - 10	91312-05008	40 - 12	93306-252XP	2 - 21		27 - 41	97027-06025	19 - 11		
90387-08813	16 - 12	91312-05010	22 - 29	93306-253X1	2 - 22	95307-08700	27 - 26	97507-05520	39 - 2		
90387-09806	6 - 31	91312-05016	3 - 13	93306-253X2	13 - 23	95602-05100	40 - 21	97602-05320	6 - 27		
90387-10003	31 - 18	91312-06016	4 - 19	93306-272X1	13 - 24	95602-06100	29 - 16	97702-40512	37 - 5		
90387-107H6	22 - 7		32 - 4	93306-305XB	2 - 6		38 - 8	97702-50012	18 - 4		