

F-TYPE

QUICK START GUIDE

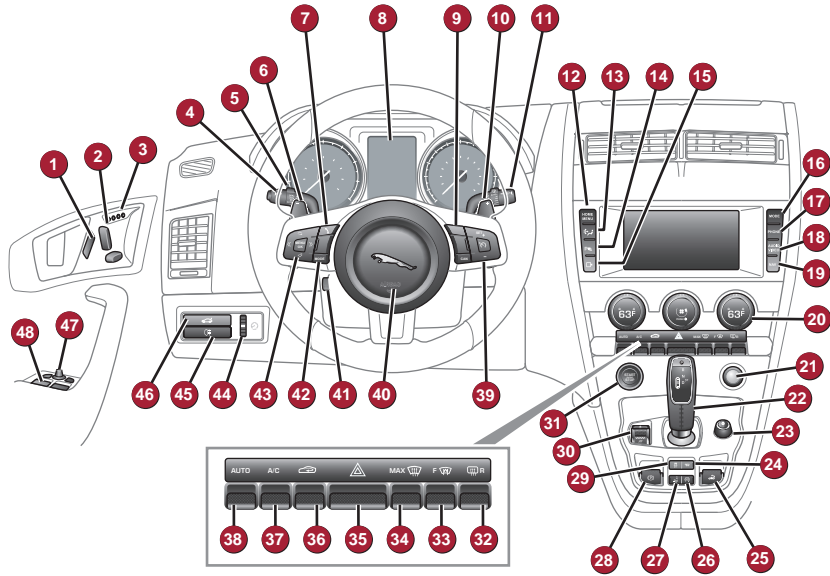
CONTENTS

Driver controls	2
Vehicle access	3
Comfort adjustments	4
Starting and driving	5
Driving aids	8
Heating and ventilation	10
Audio and touch screen	11
Navigation	14
Telephone	15
Gas station information	16





JAGUAR

Some features may not apply to your vehicle.
Refer to the Owner's Handbook for full operating instructions.



- | | |
|---|---|
| 1. Central locking/unlocking | 27. Deployable spoiler switch |
| 2. Seat adjustment | 28. Electric parking brake |
| 3. Driving position memory | 29. Stability control (DSC) |
| 4. Trip computer button | 30. Driving mode |
| 5. Turn signals and headlamp control | 31. Engine STOP/START |
| 6. Gearshift down | 32. Heated rear screen |
| 7. Phone | 33. Heated windshield |
| 8. Instrument panel, message center and warning lamps | 34. Windshield maximum defrost |
| 9. Heated steering wheel | 35. Hazard warning lamps on/off |
| 10. Gearshift up | 36. Climate control recirculation |
| 11. Wiper/washers | 37. Climate control on/off |
| 12. Home menu | 38. Climate control AUTO mode |
| 13. Climate menu | 39. Cruise control or Automatic speed limiter (ASL) |
| 14. Touch screen Setup or Parking aid | 40. Horn |
| 15. Touch screen on/off or Rear camera | 41. Steering column adjuster |
| 16. Audio/video mode selection | 42. Audio/video mode selection |
| 17. Phone menu | 43. Audio/video and phone controls |
| 18. Audio/video menu | 44. Instrument illumination |
| 19. Navigation menu | 45. Fog lamps on/off |
| 20. Climate control | 46. Luggage compartment release |
| 21. Power socket | 47. Exterior mirror controls |
| 22. Gear selector | 48. Window controls |
| 23. Audio/video system on/off | |
| 24. Active exhaust | |
| 25. Roof up/down | |
| 26. Intelligent stop/start | |




Smart key

-  Press once to lock the vehicle and arm the exterior alarm. To also close any open windows, press and hold for 3 seconds (Global closing).
-  Multi-point entry - press once to disarm the alarm, unlock all doors and the luggage compartment.

Single-point entry - press once to disarm the alarm and unlock the driver's door. A second press unlocks the passenger door and the luggage area.

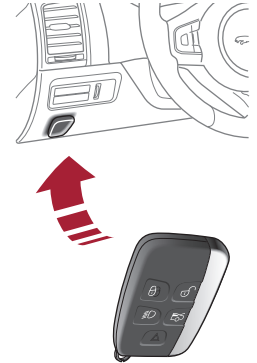
Press and hold to also open the windows (Global opening).

With either method the door handles will be presented for opening.

-  Press once to switch the headlamps on for up to 120 seconds. Press again to switch off.
-  Press to open only the luggage compartment. The rest of the security system remains active.
-  Press and hold for 3 seconds to activate/cancel the panic alarm.

Smart key not found

If the Smart key is not detected and the message **Smart Key Not Found** is displayed, hold it in the indicated position. Start the engine as normal. The Smart key can now be removed.



Unlocking mode alternatives

To change between entry modes, with the vehicle unlocked, press the lock and unlock buttons simultaneously for 3 seconds. The hazard warning lamps will flash twice to confirm the change.

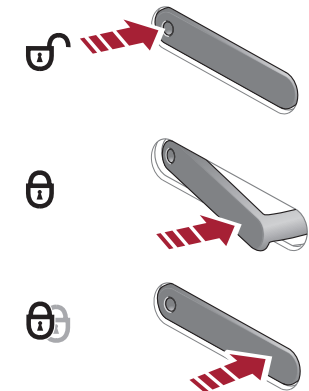
Keyless entry and exit

While the Smart key is within 3 ft (1m) of the vehicle, simply press a door handle button to unlock the vehicle and disarm the alarm. Pressing the luggage compartment release button allows access to the luggage compartment but the vehicle doors remain locked.

To lock the vehicle and arm the alarm, first make sure the Smart key is outside the vehicle but within 3 ft (1m).

Single-locking - press the door handle gently, the door handle will retract. The doors and luggage compartment will lock and the exterior alarm will be activated. Doors can still be unlocked from inside the vehicle.

When locking it is advisable to have the hood up.



Smart key detection

The Smart key may not be detected if it is placed within a metal container or if it is shielded by a device with a back lit LCD screen, (e.g. laptop, smartphone etc.)

Loose coins in the same pocket as the Smart key can also act as a shield. Keep the Smart key clear of possible shielding when attempting Keyless entry or Keyless starting.

Smart key detection

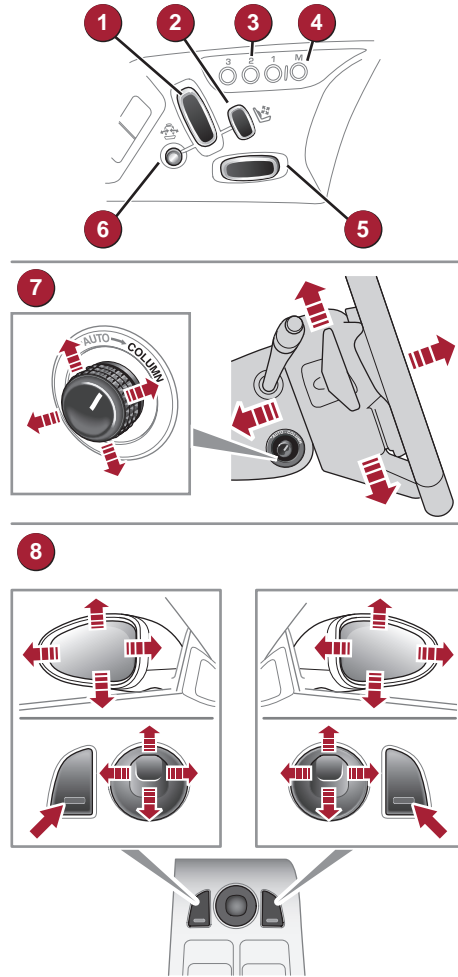
Do not leave your Smart key within the luggage compartment, the vehicle WILL NOT automatically unlock (should it become shielded).

Setting the driving position

See page 2, items 2, 41 and 48

Set the seat position using the following controls.

1. Seat back angle.
2. Lumbar support.
3. Memory preset buttons 1, 2 and 3.
4. Memory set button.
5. Seat forwards and back, cushion height and cushion angle.
6. Side bolsters inflate and deflate.
7. With the vehicle stationary, adjust tilt and reach of the steering column to your ideal driving position.
8. Press the left or right mirror selector. Use the mirror adjuster to set mirror positions.



Storing the driving position to memory

When you have adjusted the driver's seat, steering column and door mirrors to your ideal driving position, the settings can be stored.

Press the memory set button to activate the memory store function. The button will illuminate to indicate the memory store function is active.

Within 5 seconds, press button 1, 2 or 3 to store the current driving position.

A stored memory position can now be recalled with a press of the appropriate button. The seat, steering wheel and mirrors will move to their preset positions.

Time limit

Memory buttons must be pressed within 5 seconds after pressing the memory set button, otherwise the memory store function will cancel.

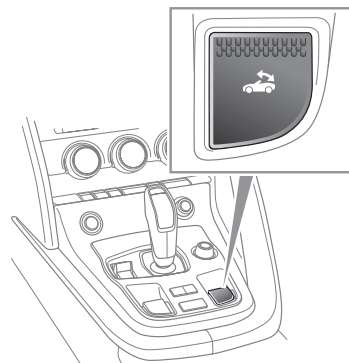
Convertible roof

See page 2, item 25

To operate the convertible roof, the ignition must be on and road speed below 30 mph (50 km/h).

1. To open the roof, push down and hold the front of the switch.
2. A warning will sound and the side windows will drop slightly. The warning will sound again when the roof is fully open.
3. Release the switch when the roof is fully open.

Closing is a reverse of this procedure. Lift the front of the switch up until the roof is fully closed and latched.



Engine start/stop

See page 2, item 31

Ignition on:

- With the Smart key inside the vehicle, press the **START/STOP** button to switch on ignition.
- A second press will switch off the ignition.

Engine start

- The transmission must be in **Park** or **Neutral** position.
- With the foot brake depressed, press and release the **START/STOP** button.
- Press again to stop the engine and switch off the ignition.

Smart key use

The engine will continue to run even if the Smart key is removed from the vehicle. However, if the engine is stopped, it cannot be restarted until the Smart key is returned to the vehicle.

Rolling start

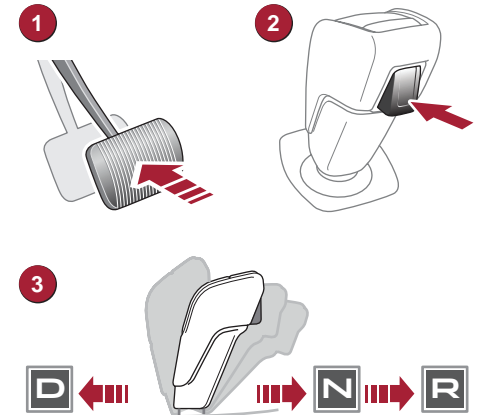
If the engine is switched off while the vehicle is moving, it can be restarted after 2 seconds have elapsed by selecting transmission **N** position then pressing the **START/STOP** button.

Transmission

See page 2, item 22

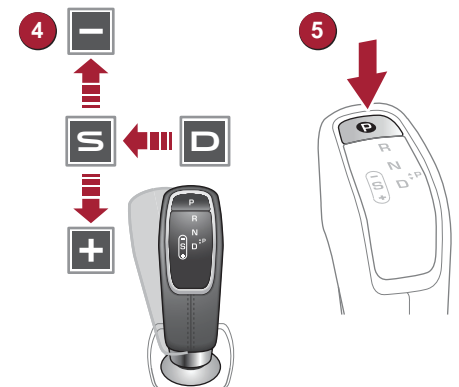
1. The brake pedal must be depressed before and while the selector is moved from **P**.
2. The selector release button must be pressed when moving from **P** or **N**.
3. Move the selector backward to **D** or forward to **N** or forward again to **R**. An LED on top of the selector will illuminate to indicate current gear selection.
4. To select Sport (**S**) mode when in **D**, move the selector to the left. The selector can now be moved forward to move up a gear and back to move down a gear. To return to fully automatic mode, move the selector back to **D**.
5. To select Park, simply press the **P** switch on top of the selector. This can be done while in any gear selection. The vehicle must be stationary when **P** is selected.

If the engine is switched off with any other gear still selected, the transmission will automatically return to **P**.



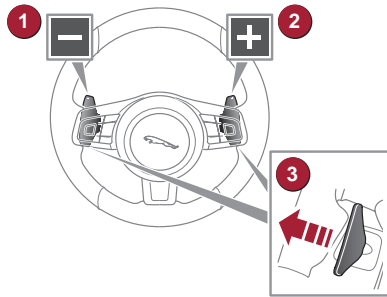
Towing the vehicle

If the engine is switched off with **N** selected, automatic selection of **P** is delayed for 10 minutes. This allows enough time for the vehicle to be conveyed through an automatic car wash. **DO NOT** use this feature to enable towing of the vehicle. Refer to **Vehicle recovery** in the Owner's Handbook.



Gear shift paddles

See page 2, items 6 and 10



1. To shift down a gear, briefly pull the left paddle.
2. To shift up a gear, briefly pull the right paddle.
3. To exit manual gear shift mode, pull and hold the right paddle for one second. This will return the transmission to automatic operation in **D**.

If shift paddles are used with **D** selected, the transmission will revert to automatic mode if use of the paddles is not maintained. With **S** selected, manual operation is maintained until **D** is selected again.

Electric parking brake

See page 2, item 28

Applying

- With the vehicle stationary, lift up the parking brake switch and then release it. The red warning lamp in the instrument panel will illuminate.

Releasing

- With the ignition on, apply the foot brake and press down on the parking brake switch.
- If the vehicle is stationary with the parking brake applied and either **D** or **R** selected, pressing the accelerator will automatically release the parking brake.

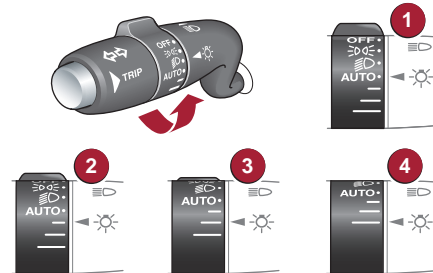
Auto headlamps and High beam assist

See page 2, item 5

1. When **AUTO** is selected with the rotary control, side lamps and headlamps will turn on automatically as ambient light fades. With the control in the low beam position, High beam assist will activate automatically when ambient light falls below a pre set level. Vehicle speed must be above 25 mph (40 km/h). To override High beam assist and select low beam, pull the lighting control backwards to the flash position and release. To reinstate High beam assist, push the lighting control forward to the high beam position, then back to low beam position.

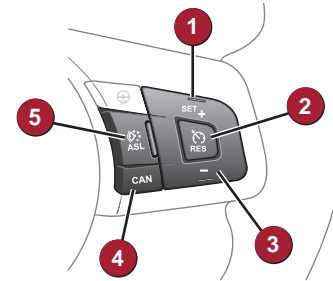
Courtesy delay

- 2, 3, 4. The headlamps can be set to temporarily light the way ahead when exiting the vehicle at night. Rotate the control for exit delay periods of 30 seconds, 60 seconds or 120 seconds.



Cruise control and ASL See page 2, item 39

Setting cruise control speed



1. Accelerate to the desired speed then press to set and maintain the cruise speed. This can also be used to increase speed while cruise control is operating.
2. Resumes the set speed after cruise control has been suspended.
3. Press to decrease the set speed.
4. Suspends cruise control but retains current set speed in memory.
5. ASL on/off. The Automatic speed limiter button switches between cruise control and ASL.

Setting an ASL speed limit

With ASL selected, a maximum speed can be set. The engine will respond normally up to that speed but further accelerator pressure will not allow the set speed to be exceeded. Kickdown use will over-ride the ASL setting allowing a higher speed to be reached. When kickdown is used, ASL is cancelled.

1. Press to set a maximum speed. A higher maximum speed can be set at any time.
2. Resumes ASL assistance after a suspension.
3. Press to decrease the speed limit.
4. Suspends ASL assistance
5. ASL on/off. The Automatic speed limiter button switches between cruise control and ASL.

Note: The set speed will be displayed in the Message center.

Cruise control override

Cruise control disengages when brakes are applied or when speed is below 18 mph (30 km/h). Cruise control will cancel if the accelerator is used for more than 5 minutes.

Intelligent stop/start

See page 2, item 26

Intelligent stop/start is automatically activated when the ignition is turned on. If the vehicle is stopped and the brake is applied, the engine will turn off (unless it is required to support other vehicle systems). When the brake is released and a drive gear is selected the engine will restart.



A warning lamp on the instrument panel will illuminate while the engine is switched off by Intelligent stop/start.

Press the Intelligent stop/start switch to turn off or on. **Note:** The engine will restart automatically if the switch is pressed while an automatic engine stop is in progress. When the ignition is turned off and on again, Intelligent stop/start will be reinstated.

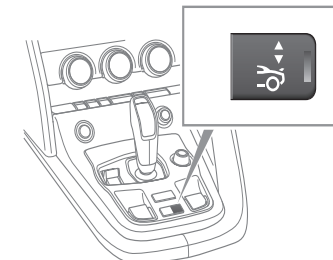
Deployable rear spoiler

See page 2, item 27

The spoiler will raise automatically when speed reaches 60 mph (96 km/h) and close when speed drops below 40 mph (64 km/h). Press and release the button to raise the spoiler manually at speeds below 60 mph (96 km/h).

Press and hold the button to lower the spoiler.

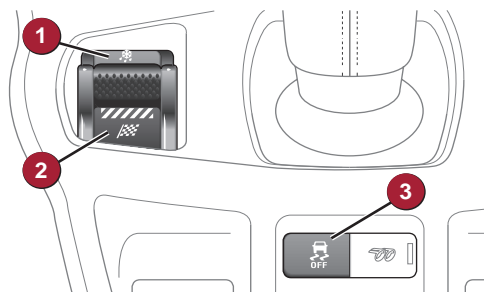
Note: If the spoiler is left partially lowered, press and release the button to fully raise the spoiler before lowering.



JaguarDrive control and Dynamic Stability Control

See page 2, items 29 and 30

Winter mode, Dynamic mode and Dynamic Stability Control (DSC) allow the driver to more finely tune the



vehicle driving characteristics to suit prevailing conditions.

1. **Rain/ice/snow mode.** Use in slippery road conditions.
2. **Dynamic mode.** Co-ordinates vehicle systems to deliver a high performance driving experience.
3. **DSC.** The default condition at engine start is DSC on and is designed to control vehicle stability.

Door mirrors and blind spot monitoring

See page 2, item 47

Passenger side mirror dip when reversing

This feature can be used to improve the passenger side lower view while reversing. Mirror dip can be selected or deselected from the instrument panel menu. Select **Features** from the **Vehicle Settings** menu, then select the desired option from the list.

To set a dip position:

- With the Electric parking brake on, select reverse gear.
- Adjust the mirror position to view the passenger side lower rear kerb and vehicle.

Subsequently, each time reverse gear is selected, the set dip position will be automatically selected. The mirrors will return to their normal position when another gear is selected.

Powerfold mirrors

Press both buttons simultaneously to fold the mirrors inward. Press again to unfold.

DSC can be switched off if required. Press and hold the switch for more than 3 seconds.

The DSC warning lamp will illuminate and the Message center will display **DSC Off** until DSC is reinstated.

Turn DSC on again with a short press and release the switch.

TracDSC is an alternative setting that optimises the DSC settings for maximum traction. TracDSC enables a more involving and focused driving experience on dry tarmac.

Note: Normal stability control may be impaired.

To select TracDSC, press and hold the DSC switch for less than 3 seconds.

When TracDSC is selected, the DSC warning lamp will illuminate and the Message center will briefly display **TracDSC**.

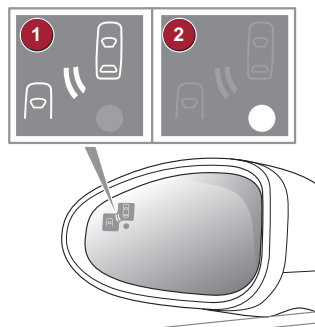
Turn DSC on again with a short press and release the switch.

Note: Cruise control can only be used when DSC is on.

Blind spot monitor

Each mirror displays amber icons 1 to warn of overtaking vehicles in adjacent lanes. The monitored area extends approximately 20 ft (6m) behind the rear wheels and 8.2 ft (2.5m) to the sides.

It switches on automatically at speeds above 6 mph (10 km/h) while in a forward gear. The amber dot 2 is illuminated while speed is below the threshold.

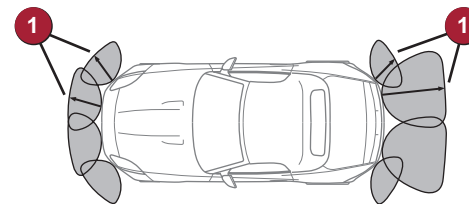


Parking aids

See page 2, item 14

When reverse gear is selected, Parking aids at the rear and front will activate.

1. The touch screen will display a vehicle graphic and indicate the approximate distance to any object detected.



Note: Sensors may activate when water, snow or ice are detected on their surfaces. Make sure the sensors are cleaned regularly.

An audible alert will increase in frequency as the object is approached.

When moving forward into a space, you must manually activate the front sensors by pressing the Parking aid switch in the fascia panel.

The front sensors are deactivated when the vehicle speed exceeds 10 mph (16 km/h).

Audible alert volume can be adjusted via the touch screen. From the Home screen, select **Setup**, then **System**, then **Volume presets**. Use the + or - soft keys alongside **Parking aid** to adjust volume.

Alternative screen

Touch the screen to return to the previous view.

Rear camera

Activates when reverse gear is selected. The touch screen will display guidance lines to aid reversing.



Valet mode

The glove box, luggage compartment and touch screen can be security locked to deny access to a parking attendant. Before handing over your Smart key, remove the emergency key blade and keep it in a safe place.

To set a Personal Identification Number (PIN) :

- On the touch screen select **Home** menu.
- Now select **Valet**.
- Enter a 4 digit PIN (personally chosen) and touch **OK**. **Valet on** is displayed as a confirmation.

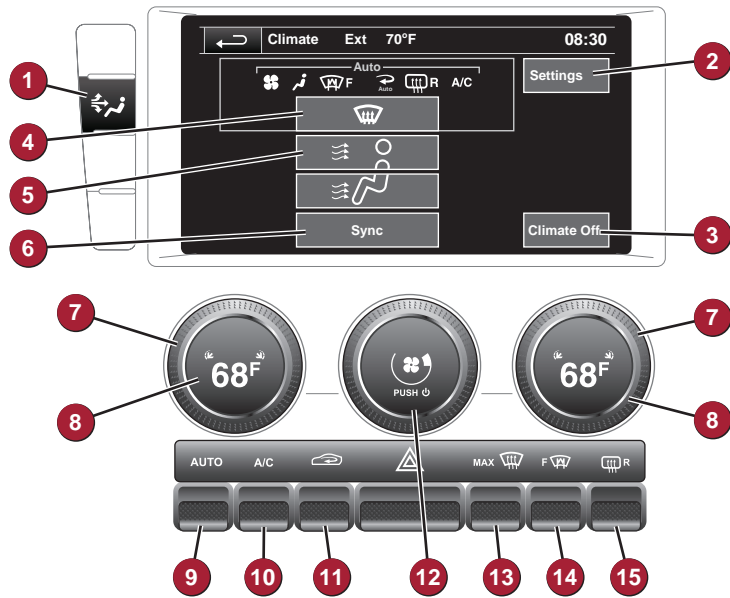
To deselect Valet mode

Access the **Valet** screen and enter your PIN. Now press **OK**. **Valet off** is displayed and the glove box and luggage compartment are now accessible.

Insert the emergency key blade back into the Smart key.

Heating and ventilation

See page 2, items 13, 20 and 32 to 38



1. Press to access climate menu.
2. Settings menu.
3. Climate control off.
4. Air to windshield.
5. Air distribution. More than one setting can be selected at the same time. Depending on the setting, the deployable center vents may open or close.
Note: The center vents may close automatically when the climate control or ignition is switched off.
6. Synchronizes left and right settings.
7. Temperature controls.
8. Temperature display. Press to turn seat heating on/off. Rotate to adjust temperature.
9. **AUTO**. Automatic mode. The climate control will adjust air conditioning, blower speed, air intake and airflow distribution to maintain the selected temperature(s). The deployable center vents will open and close as required. Fogging will be reduced.
10. Air conditioning on/off.
11. Timed/latched recirculation. Helps prevent fumes from entering. Prolonged use may cause the windows to fog.
12. Blower speed. Press to switch off climate control.
13. **MAX**. Fastest method to remove frost or heavy fogging from the windshield.
14. Heated windshield.
15. Heated rear screen.

Recommended setting

AUTO is the recommended operating mode. This will help prevent fogging and reduce odours.

Seat heating

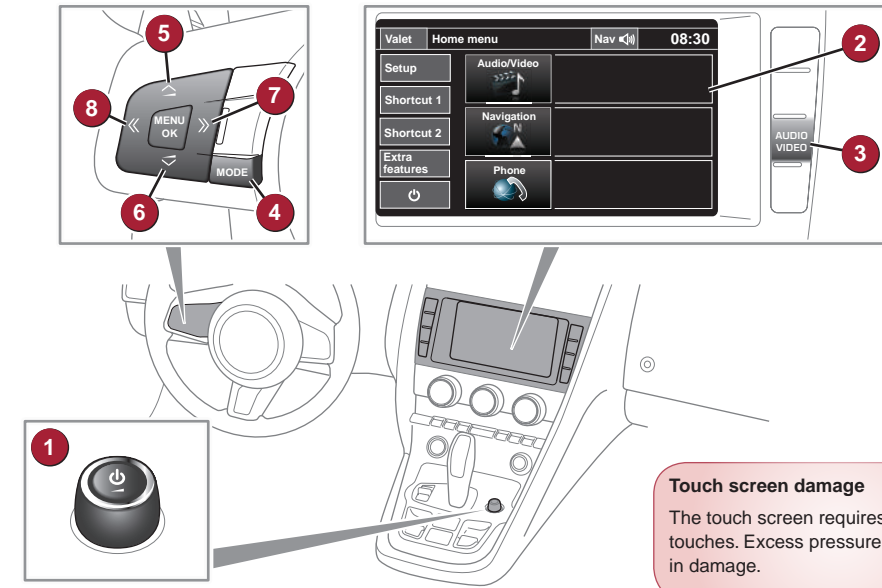
Seat heating will operate only while the engine is running. This is to prevent the battery becoming discharged.

External water deposits

The air conditioning system removes moisture from the air and deposits the excess water beneath the vehicle. Puddles may form but this is normal and is no cause for concern.

Audio controls

See page 2, items 18, 23 and 42



Touch screen damage

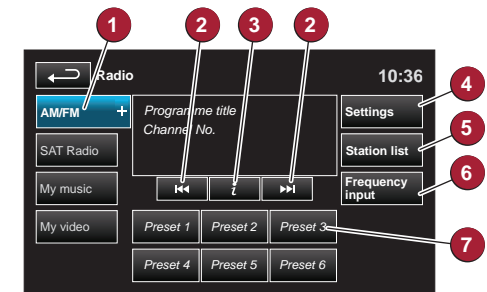
The touch screen requires only light touches. Excess pressure could result in damage.

1. On/off and volume control.
2. Touch screen.
3. Press for the Audio/Video menu.
4. **MODE**. Short press to scroll through audio/video sources. While a source is displayed, long press to scroll through sub selections.
5. Press to increase volume.
6. Press to decrease volume.
7. Seek up. Short press to select the next preset or track. Long press to select next radio station or TV channel.
8. Seek down. Short press to select the previous preset or track. Long press to select previous radio station or TV channel.

Radio

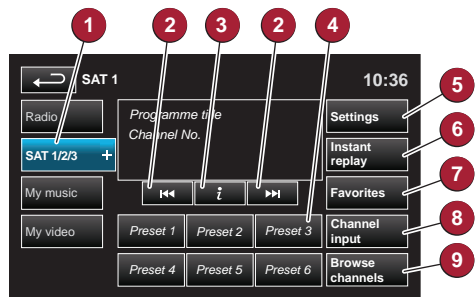
On the touch screen **Home Menu**, touch the **Audio/Video** soft key. The last used audio source controls will be displayed. Select **Radio**.

1. Touch to view and select wavebands.
2. Move up or down to the next or previous station.
3. View information broadcast by the radio station.
4. **Settings** menu, select from **RDS**, **Traffic**, **News**, **AF** and **REG**.
5. **Station list** (FM only). Select to view a list of available stations on the waveband. The list can be sorted by **Frequency**, **Name** or **Category** (pop, news, sport), by selecting the appropriate soft key. Touch to select the chosen station.
6. **Frequency input**. Enter a station frequency. When the final digit is entered the station will be tuned.
7. **Preset soft keys**. Can store 6 stations for each waveband. Touch and hold a soft key to store the current radio station.



Satellite radio subscription service

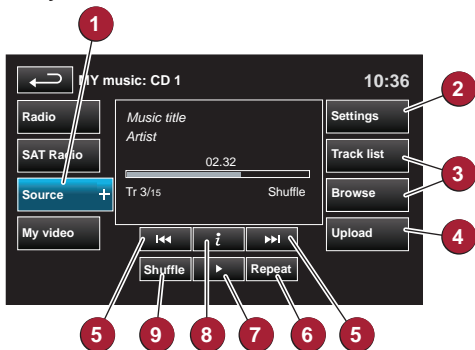
Use channel 184 to preview satellite radio. When the preview time expires you will need to subscribe to SIRIUS to enable further satellite reception.



1. Touch to select the satellite bands. Touch the + icon to move through **SAT 1, 2** and **3**.
2. Use the seek arrows to move up or down to the next or previous channel.
3. Channel information. Select if there is more information than can fit in the display area.
4. Channel presets. Each **SAT** band has 6 preset soft keys. Touch and hold a soft key to store the current channel. A brief touch will access the stored channel.
5. Select to make personal settings in **Options**, **Channel skip** and **Parental lock** areas.
6. View a list of available categories.

Portable media

From the **Audio/Video** menu, select **My music** to display the **My music** menu.



1. Touch the **Source** icon to display all portable media options. Select an option.
2. **Settings** menu, select to switch traffic and news announcements on or off.

7. Select to access the touch pad. Enter any 3 digit channel number then select **OK**.
8. Touch to view a list of channel categories. Select one to display full details of that channel and the current track.
9. Store the currently playing track to the song memory. If the audio system subsequently finds a stored track playing on a subscribed channel, notification will be given.

Note: Use the seek buttons on the steering wheel to find preset channels.

Activating satellite radio

1. Call SIRIUS on the displayed telephone number.
2. Provide them with the ID number, also displayed on screen.

You will also need your credit card. Make sure you are parked with a clear view of the sky while activation takes place. Activation can take up to 15 minutes.

3. Depending on the selected mode, this soft key will be either **Track list** or **Browse**. In Stored CD mode, both soft keys will be displayed. Select **Track list** to view current CD or Stored CD track list. Select a track to start playback. Select **Browse** to view the contents of selected device (iPod, USB and Stored CD modes only).

4. **Upload** is applicable to **Stored CD** menu only. To store a CD select **Upload** alongside an empty slot. There are 10 slots available.

5. Touch and release to skip up or down to the next or previous track. Touch and hold to scan forwards or back through the current track.

6. **Repeat**, touch and release to repeat the current track continuously.

Touch and release again to repeat the current stored CD, current MP3 folder or current USB folder.

Touch and release a third time to cancel Repeat mode.

7. **Pause/Play**. Select to pause playback, select again to resume playback.
8. View **information** about the current track.

Portable media

9. **Shuffle**, touch and release once to play random tracks from the current CD, MP3 folder, USB folder or iPod playlist.

Touch and release again to play random tracks from CD, MP3 disc, USB folders or tracks on the media device or tracks loaded onto the stored CD store.

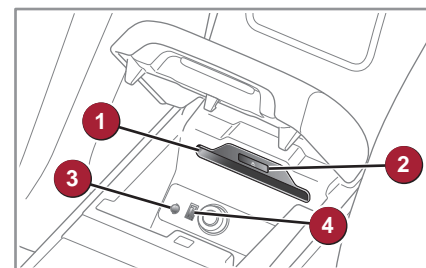
Touch and release a third time to cancel Shuffle mode.

Note: When connecting a **Bluetooth** wireless technology device, use the touch screen to operate and search the device. Many of the controls are similar to CD operation.

Note: Repeat and shuffle modes are not available for **Bluetooth** wireless technology devices.

CD player and portable media

The CD/DVD loading slot, connecting ports for auxiliary devices, iPod and USB storage devices are located inside the center console cubby box.



1. CD/DVD loading slot.
2. CD/DVD eject button.
3. 3.5 mm AUX socket.
4. USB socket.

The CD/DVD player will accommodate one CD or DVD disc at a time but with Stored CD, up to 10 CD's can be loaded onto the virtual CD store. Use **My music/Upload** to load discs.

The 3.5mm AUX socket allows extra equipment (e.g. personal stereos MP3 player, hand-held navigation unit, etc.) to be connected to the audio system. Devices connected to the AUX socket are controlled only from the device itself.

When connecting to the USB socket, use the cable supplied with your media device. iPod and USB devices can be operated from the touch screen.

The system will play MP3, WMA, WAV and AAC files from a memory stick or a USB controlled MP3 player or cell phone.

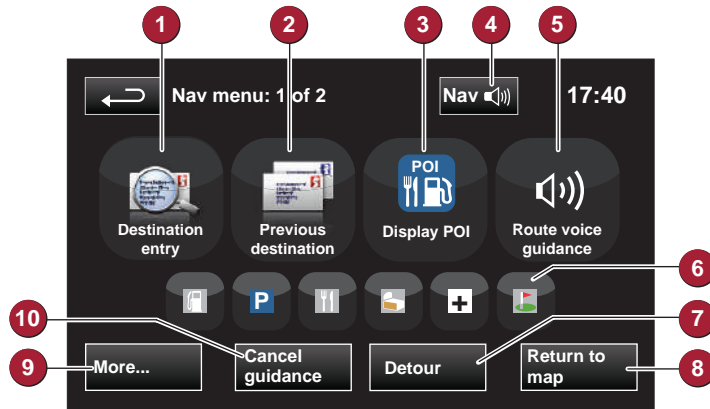
Some MP3 players use proprietary file systems that are not supported by the vehicle system. MP3 players must be set to Removable Device or Mass Storage Device mode (see the manufacturer's information). Only music files added to the device while in this mode can be played via the vehicle system.

The vehicle system will support USB devices with a storage capacity up to 256GB.

Touch screen navigation

On initial activation, make sure that both the correct country and search area have been selected.

For more information refer to the Navigation section of the Owner's Handbook.



NOTE: To access navigation press either the NAV hard key or touch the Nav icon on the Home menu.

- Use to enter a new destination. Provides a choice of options when entering a destination.
 - Displays previous destinations entered. Previous destinations can be selected as a new destination.
 - Turns the POI (Point Of Interest) icons on the map on/off.
 - When a destination is set, the Jaguar logo in this position is replaced by a soft key which enables the last voice instruction to be repeated.
 - Soft key is highlighted while voice guidance is enabled. Touch to turn voice guidance off.
 - POI shortcuts: Touch icon to list available POIs that are close to the vehicle position.
 - Calculates a detour from the current route.
 - Advances to the main map screen.
 - There are 2 navigation menu screens. Use the **More...** soft key to toggle between them. The second map screen features the following soft keys.
- Stored locations.** Used to manage the stored data. **TMC** (Traffic Message Channel). Provides data about road conditions and any events that may affect the current route.
- Route options.** Allows selection of various options for the route.
- Nav set-up.** For setting personal preferences within the navigation system.
- Cancel current route guidance.

Selecting navigation

When navigation is selected after the ignition is turned on, a caution screen is displayed. Touch **Agree**.

Note: At the first time of accessing the caution screen, set the required language.

Setting a destination

Select **Destination entry**.

Select **Address** and enter address details using the keyboard. As each part of the address is refined, touch **OK** or **List** to display all the streets and towns that are available for selection. If the house number is not known, press **OK**, the mid-point of the road is then used as the destination.

When the address entry fields are complete, press **OK** to move to the map screen.

Start guidance

The map screen will display the selected destination. Touch **GO** to start route calculation. Touch **Review route** if you want to take an alternative route.

Touch **Go** to start guidance.

Review route

There will be a choice of **3 routes** or **Change route**. **3 routes** will display 3 different route options on the map. Select **Route 1, 2 or 3** by touching the respective box displayed on the right side of the map and then select **GO**.

Bluetooth® wireless technology devices

See page 2, items 7 and 43

Bluetooth Connectivity

Compatible **Bluetooth** wireless technology devices can communicate with the vehicle's in-built telephone system. For the latest compatibility information, refer to the **Owners Section** at www.jaguarusa.com.

Connection must be made with ignition on or engine running.

Use the following procedure in conjunction with your phone manufacturer's instructions.

Pairing and connecting using your phone

NOTE: The process of pairing and connecting a phone to the vehicle will vary depending on the type of phone used.

- Switch the ignition on and make sure the touch screen is active.
 - From the **Home menu**, select **Phone**.
 - If no phone is connected, select **Search new**, otherwise select **Change phone** and then select **Search new**.
 - Select **Device to vehicle** option.
- NOTE:** The vehicle's **Bluetooth** wireless technology system is discoverable for only 3 minutes.
- Using your phone, search for **Bluetooth** wireless technology devices. On some phones, this is referred to as new paired device. See your phone's operating instructions for further information.
 - When the vehicle's system is discovered, begin the pairing process and follow the on-screen instructions.
 - When requested, enter a PIN of your choice into your phone and the vehicle system. Select **OK**.
 - When your phone is paired and connected, a confirmation message will be displayed.

NOTE: Some phones require the pairing to be set as 'authorised' or 'trusted' in order to automatically connect. Please refer to your phone's operating instructions for further information.

Downloading phonebook entries

When a phone with phonebook download capability is paired and docked, its phonebook directory can be automatically downloaded to the vehicle system.

See **PHONEBOOK** in the Owner's Handbook for more information.

Calls via the touch screen

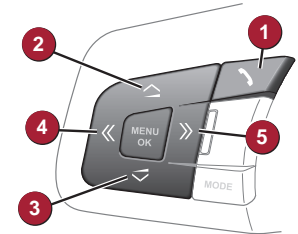
With a phone paired and active, press the **PHONE** button below the touch screen.



- Select **Digit dialing**, **Phonebook** or **Last 10**. With **Digit dialing** selected, use the keypad to enter the number. With **Phonebook** selected, choose a number from the downloaded phonebook. **Last 10** displays the previous 10 calls. Choose one to dial.
- To make the call touch the connect icon . The icon will change to a connected call icon.
- To end a call touch .

Calls via the steering wheel controls

- Press to answer an incoming call. Press and release to make a call. Press and hold to display Phonebook.
- Press to move up a displayed list. While in a call, press to increase volume.
- Press to move down a displayed list. While in a call, press to decrease volume.
- Press to go to **Last 10** list of dialled, received and missed calls.
- Press to move through the **Last 10** list. After the last item the list will exit.



Operating notes

- Phone reception is dependent on the phone and network signal. Performance may be improved by changing your phone's settings (e.g. turning off 3G).
- If echo is experienced when using the phone, reduce the audio system volume during the call.

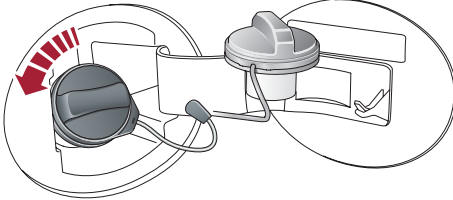
GAS STATION INFORMATION

Fuel filler flap opening

The vehicle must be in an unlocked condition before the fuel filler flap can be opened. Press the fuel filler flap firmly approximately 1.4 in (35mm) from the rear edge and release. The correct fuel specification is shown on the inside of the fuel filler flap.

Filler cap

Twist the cap counter-clockwise to release.



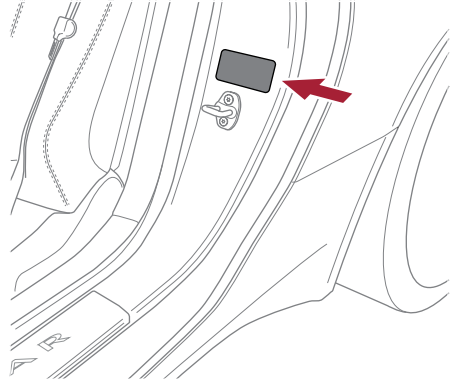
A hook is provided on the flap hinge to hold the cap while refuelling. Replace the cap and turn it clockwise until it clicks 3 times.

Hood release

The hood release is located in the left side footwell.

Tire pressure label location

Tire pressures are shown on a label located in the driver's door opening.



Note: Tire pressures must be checked and adjusted while the tires are cold.

Incorrect fuelling

Do not use E85 fuels (85% Ethanol content). Equipment necessary for the use of fuels containing more than 15% Ethanol is not fitted to this vehicle. If E85 fuels are used serious engine and fuel system damage will occur.

Avoid using fuel containing Methanol. If it is unavoidable, do not use a fuel with more than 10% Methanol content. The fuel must contain co-solvents and corrosion inhibitors. Fuel system damage and engine performance problems can occur when Methanol is used.

Fuels containing up to 15% MTBE can be used.

No responsibility is accepted for damage caused by using incorrect fuels.

If the vehicle is filled with the wrong type of fuel:

- **DO NOT start the engine!**
- **Call for qualified assistance!**

